

Express Quick Start Guide

The following sections provide instructions for installing and using the Express software.

TABLE OF CONTENTS

System Requirements

Install Requirements

Install the Express software

Post Install Considerations

Start the CommCell Console

Configure a Backup Target using the EZ Operations Wizard

Check Device Status using the EZ Operations Wizard

Create a Deduplication-Enabled Disk Library using the EZ Operations Wizard

Run a Backup using the EZ Operations Wizard

View Backup History using the CommCell Console

Browse and Restore Data using the EZ Operations Wizard

Install Software using the EZ Operations Wizard

Display the EZ Operations Wizard

Where To Go From Here


Express Software Version Support

Uninstall the Express Software

SYSTEM REQUIREMENTS

The following are the minimum requirements for using this version of the Express software:

| ITEM | DESCRIPTION |
|---------------------------|---|
| COMPUTER/PROCESSOR | Intel Pentium or compatible 650 MHz processor minimum recommended. |
| MEMORY | 512 MB RAM minimum required Virtual memory should be set to twice the amount of available physical memory. |
| HARD DISK | 2.5 GB of log disk space for installing the software and future data growth. |
| OPERATING SYSTEM | <p>WINDOWS 7 Microsoft Windows 7 x64 Editions</p> <p>WINDOWS VISTA Microsoft Windows Vista x64 Editions</p> <p>WINDOWS XP Microsoft Windows XP Editions</p> <p>WINDOWS SERVER 2003 Microsoft Windows Server 2003 x64 Editions with a minimum of Service pack 1</p> <p>WINDOWS SERVER 2008 Microsoft Windows Server 2008 x64 Editions* * Core Editions not supported. * Contact your software provider prior to installing the software on Windows 2008 Web Server.</p> |
| PERIPHERALS | DVD-ROM drive Network Interface Card (with TCP/IP Services Configured) |
| DISPLAY | Any mode other than VGA |
| MISCELLANEOUS | <p>Microsoft® SQL Server 2008 Express Edition Service Pack 1.</p> <ul style="list-style-type: none"> SQL Server 2008 database instance with the appropriate service pack will be automatically installed during the installation. <p>Microsoft Internet Explorer (IE) versions 5.01, 6.0, 7.0, 8.0</p> |

| | |
|---|---|
| | <ul style="list-style-type: none"> For all Microsoft Windows 2003 platforms, Microsoft Internet Explorer (IE) is automatically installed with the operating system. |
|  | <p>The software can function with JRE version 1.6.x or higher.</p> <p>If a JRE version 1.6.0_06 or higher is available, the software will use the existing JRE software.</p> <p>If JRE version 1.6.0_05 or lower is available, or no JRE version is available at all, you will be prompted to install JRE version 1.6.0_16</p> <p>You can run CommCell Console as a Remote Web-Based Application without installing the software provided IIS is installed and running on the CommServe computer (or CommCell Console and IIS are running on an alternate computer). However, you must manually install JRE in this case. When running the applet Java™ Runtime Environment (JRE) SE v1.6.0_06 is recommended - can be installed from the software installation disc.</p> |
| NOTES ON COMMSERVE INSTALLATION | <p>The software should not be installed on a compressed drive.</p> <p>The computer must have a static IP address. This version of the software does not support Dynamic Host Configuration Protocol (DHCP).</p> |

INSTALL REQUIREMENTS

- Log on to the computer as a local **Administrator** or as a member of the **Administrators** group on that computer.
- Close all applications and disable any programs that run automatically, including anti-virus, screen savers and operating system utilities. Some of the programs, including many anti-virus programs, may be running as a service. Stop and disable such services before you begin. You can re-enable them after the installation.
- This procedure describes the steps involved in performing a **Standard Install**, which includes installation of the CommServe, CommCell Console, and File System /DataAgent. If you choose to perform a **Custom Install**, which provides the opportunity to install additional components, the steps involved in the installation process may vary.

INSTALL THE EXPRESS SOFTWARE

Insert CD labeled **#1** into the CD-ROM or DVD-ROM drive.

If the installation program does not launch automatically:

- Click the **Start** button on the Windows task bar, and then click **Run**.
- Browse to the CD-ROM or DVD-ROM drive, select **Setup.exe**, click **Open**, then click **OK**.

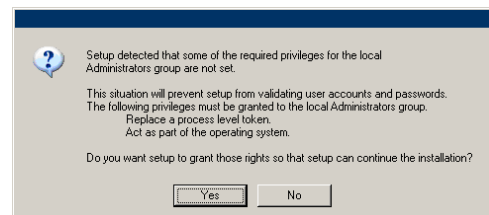
- Choose the language you want to use during installation. Click the down arrow and select the desired language from the drop-down list, and click **Next** to continue.
- Select the option to create a new CommCell.
- Read the Welcome screen.
Click **Next** to continue, if no other applications are running.
- Read the virus scanning software warning.
Click **OK** to continue, if virus scanning software is disabled.
- Read the license agreement, then select **I accept the terms in the license agreement**.
Click **Next** to continue.
- Click **Yes** to set up the required privileges for the local administrators group.

NOTES

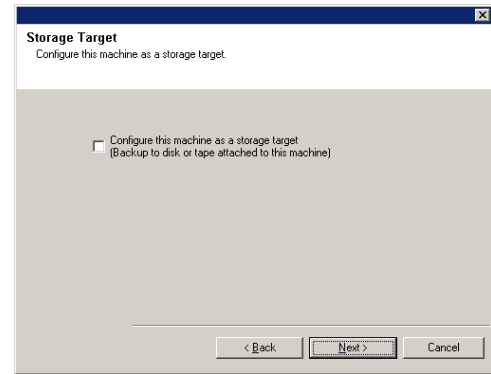
- This option will only appear if the Windows user account used to install the software does not have the required administrator rights (e.g., if the operating system was newly installed).
 - If you choose to click **Yes**, the install program will automatically assign the required rights to your account. You may be prompted to log off and log back on to continue the installation.
 - If you choose to click **No**, the installation will be aborted.
 - You will be prompted at the end of the installation to decide if you want these privileges to be revoked.
- Click **Next** to continue.

NOTES

- To install MediaAgent and configure this computer as a storage target, select **Configure this machine as a storage target** and click **Next** to continue.



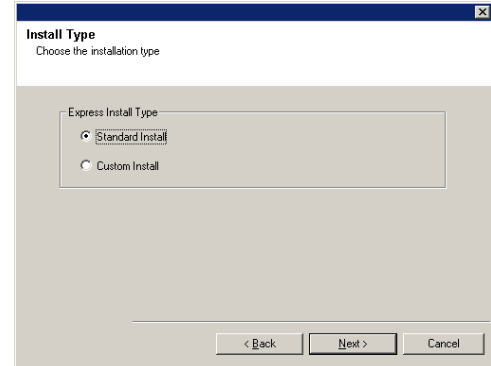
8. Select either **Standard Install** or **Custom Install** as appropriate for your installation, then click **Next** to continue.



9. If applicable, select the components that you wish to install, then click **Next** to continue.

NOTES

- Your screen may look different from the sample shown.
- If you choose to install additional components, you will be prompted to perform additional steps in configuring the components you choose.
- If you wish to install the agent software for restore only, select **Install Agents for Restore Only** checkbox. See Installing Restore Only Agents for more information.



10. Click **OK** to install Microsoft .NET Framework.

NOTES

- This option will only appear if Microsoft .NET Framework has not been installed on this computer.

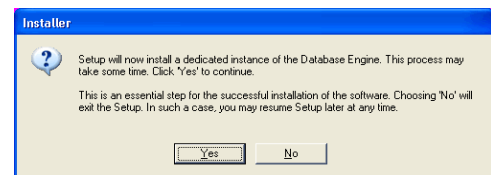
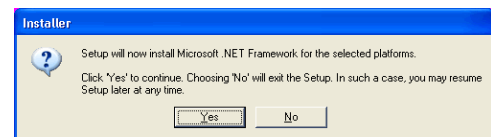
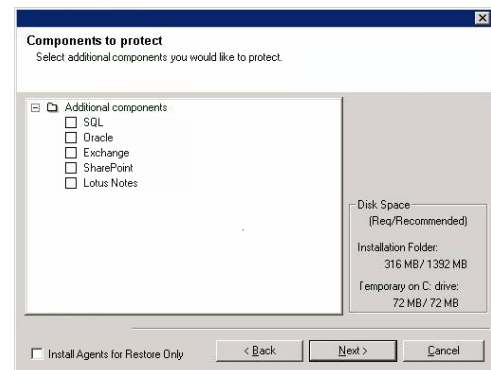
11. Click **Yes** to set up a dedicated instance of Microsoft SQL Server for the CommServe Server.

NOTES

- This prompt will only be displayed if SQL Server database instance is not installed on this computer.
- Clicking **No** will exit the install program.

12. The System Reboot message may be displayed. If so, select one of the following:

- **Reboot Now**
If this option is displayed, the install program has found files required by the software that are in use and need to be replaced. Reboot the computer at this point. The install program will automatically continue after the reboot.
- **Exit Setup**
If you want to exit the install program, click **Exit Setup**.



13. Click **Next** to install the Database Engine to the default location shown on the installer shown on the installer dialog box.

NOTES

- The Microsoft SQL Server System databases will be installed to this default location. However, if you want to install Microsoft SQL server System Database to a different location, then use the following steps to perform the installation:
 - Pre-install SQL Database at the desired location. For more information, see Pre-Installing SQL Database for CommServe.
 - Perform silent installation. For more information, see Silent Install - CommServe
- If you plan to perform VSS enabled backups on the CommServe computer, it is recommended that the CommServe database is not installed on the system drive. VSS restores could cause system state restore issues.

Click **Browse** to change directories.

Click **Next** to continue.

The install program installs the database instance.

14. If necessary, select this option for automatic FTP downloading and installation of software updates.

NOTES

- If you do not select this option, you can schedule these updates later from the CommCell Console.

Click **Next** to continue.

15. Select **Add programs to the Windows Firewall Exclusion List**, if you wish to add CommCell programs and services to the Windows Firewall Exclusion List.

NOTES:

- If Windows Firewall is enabled on the computer, this option is selected by default and must be enabled to proceed with the installation.
- If Windows Firewall is disabled on the computer, you can select this option to add the programs and services to enabled CommCell operations across the firewall, if the firewall is enabled at a later time.

You can either select this option during install or add the programs and services after installation. For adding the programs and services after installation, see Configure Windows Firewall to Allow CommCell Communication.

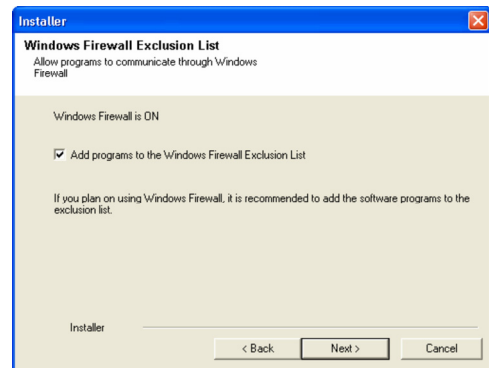
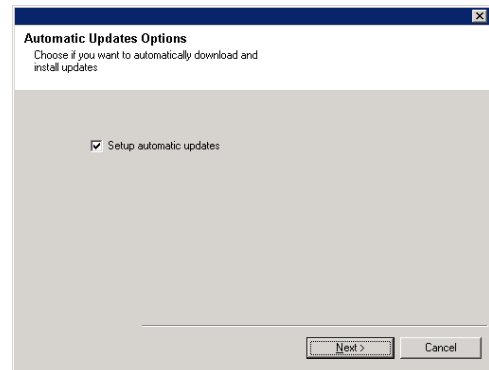
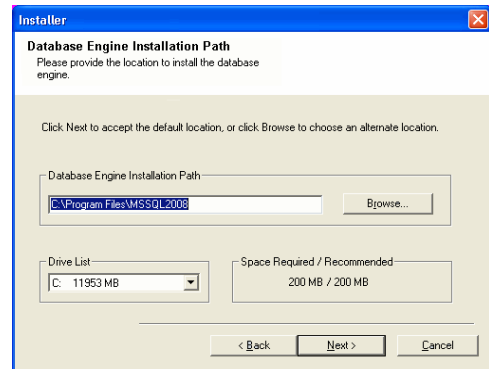
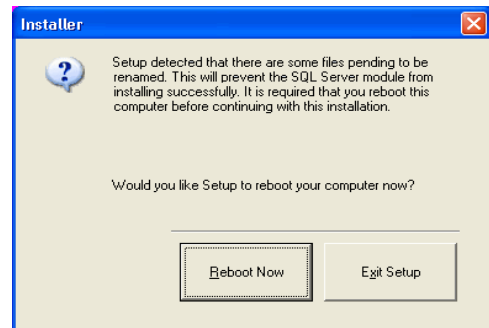
Click **Next** to continue.

16. Specify the location where you want to install the software.

NOTES

- Do not install the software to a mapped network drive.
- Do not use the following characters when specifying the destination path:
/ : * ? " < > | ! ; @ ^]
It is recommended that you use alphanumeric characters only.

Click **Browse** to change directories.



Click **Next** to continue.

17. Click **Enable password check for CommCell** to enable a password and then click **Next** to continue. If you do not want a password to open the CommCell Console click **Next** to continue.

NOTES

- This user name and password is used to log on to the CommCell Console - the Graphical User Interface (GUI) which is used to initiate backups, restores and other related functions on the computer.
- If you enter the password, note down this login and password. You will find it useful later when you open the CommCell Console.

18. Select **Setup Software Cache** option to download the software updates automatically.

Select **Schedule FTP Download of Automatic Updates** option to schedule automatic FTP downloading of software updates.

Click **Next** to continue.

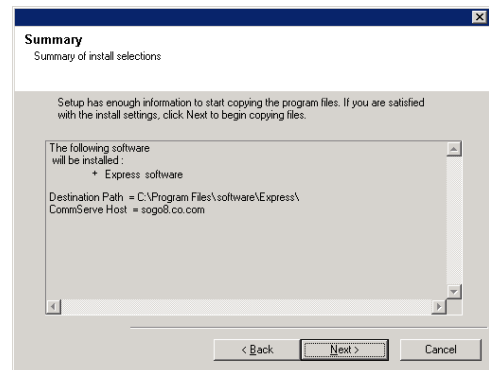
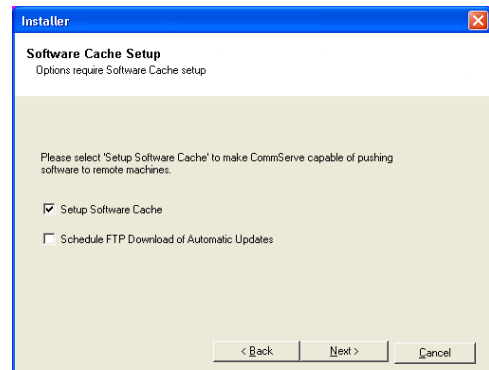
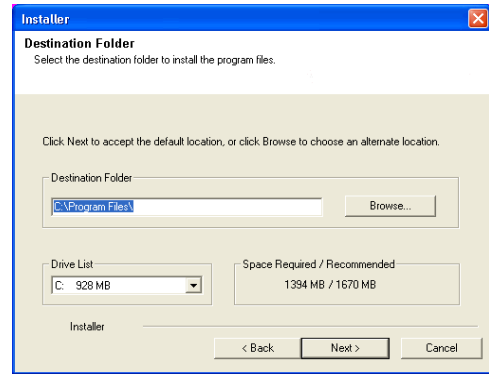
19. Verify the summary of selected options.

NOTES

- The **Summary** on your screen will look different from the example shown.
- Click **Next** to continue or **Back** to change any of the options.

The install program now starts copying the software to the computer. This step may take several minutes to complete.

20. Click the link to register the software and activate the license.
Click **Next** to continue.



21. Click **Finish** to exit the install program and launch the CommCell Console.

NOTES

- If you do not want to launch the CommCell Console or the Quick Start Guide, clear the appropriate options and then click **Finish**.

22. Enter the **User Name** and **Password** to connect to the CommCell Console, then click **OK** to continue.

23. If you have not activated the license yet, you will receive this reminder prompt. Click **OK** to continue.

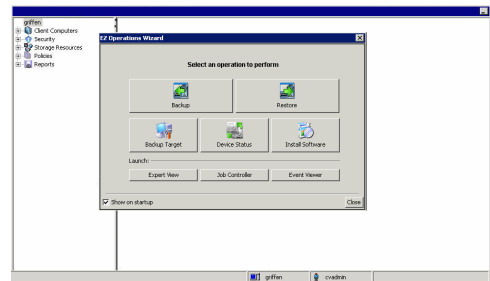
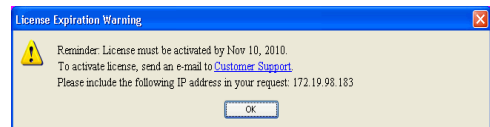
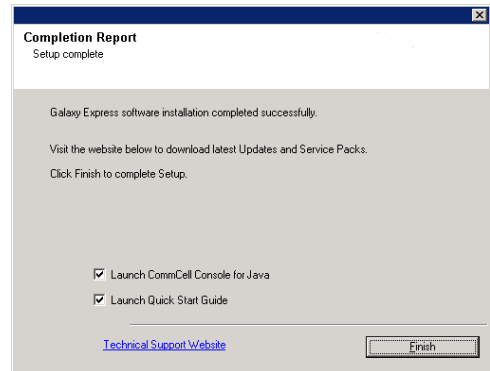
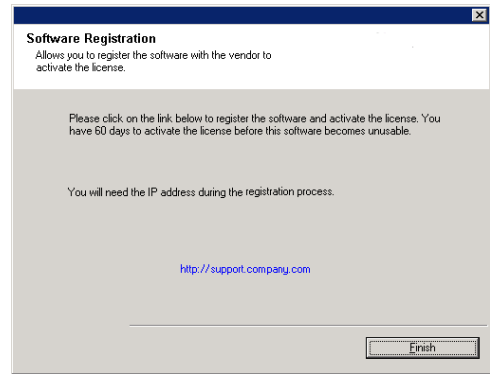
NOTES

- Your screen may look different from the sample shown.

24. The CommCell Console will display.

NOTES

- Your screen may look different from the sample shown.



POST INSTALL CONSIDERATIONS

- The database instance used by the software requires specific SQL server settings. Verify the following settings by viewing the SQL properties using the SQL Management Studio and by running the SQL Server system stored procedure, which is `sp_helpsort`.
- Install post-release updates or Service Packs that may have been released after the release of the software. Alternatively, you can enable **Automatic Updates** for quick and easy installation of updates in the CommCell. See *Books Online* for more information.
- Once you have installed the software, you can use the EZ Operations Wizard together with the CommCell Console to configure backup targets and tape

rotation, run your first backup job(s), and more using the steps outlined in the following sections.

START THE COMMCELL CONSOLE

The CommCell Console is the graphical user interface that helps you to run backups and restores. In addition the CommCell Console also provides a number of other features to help you control and manage the backup data. The following section describes how to open the CommCell Console.

1. Launch the CommCell Console from the **Start | Programs** menu, or by clicking the CommCell Console icon on your desktop.
2. Enter the **User Name**, **Password**, and name of the CommCell you wish to connect to.
Click **OK** to continue.

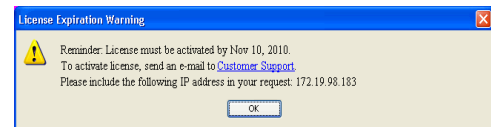


3. If you have not activated the license yet, you will receive a reminder prompt. Click **OK** to continue.

NOTES

- Your screen may look different from the sample shown.

4. The CommCell Console is displayed with the **EZ Operations Wizard**.
You can use the **EZ Operations Wizard** to:
 - configure libraries (backup targets) and tape rotation
 - backup or restore your data
 - select the Expert View, Event Viewer, or Job Controller in the CommCell Console
 - install software from CommCell Console
 - view device status



CONFIGURE A BACKUP TARGET USING THE EZ OPERATIONS WIZARD

The following section describes how to configure a backup target using the EZ Operations Wizard.

1. From the **EZ Operations Wizard**, click the **Backup Target** button.
2. The **EZ Operations Wizard** guides you through the process of configuring libraries and tape/optical devices.
3. After entering the appropriate information, review your selections on the **Summary** dialog, then either click **Finish** to save the changes or **Back** to return to the previous dialog to change any of the selections.

CHECK DEVICE STATUS USING THE EZ OPERATIONS WIZARD

The following section describes how to check the status of a device using the EZ Operations Wizard.

1. From the **EZ Operations Wizard**, click the **Device Status** button.
2. From the **Select a Library** dialog box, choose a library (Tape or Disk) to view its details.
3. After the selection, the status of the selected library is displayed in the **Status** field.

You can view and delete the contents of the tape, as well as select to overwrite the media on the next backup, if desired.

4. Click **OK**.

NOTES

- Checking the Device Status using the EZ Operations Wizard can only be performed for stand-alone drives. If you wish to check the device status for any other library, you can do so using the Data Aging options from the storage policy copy. For more information on Data Aging, refer to *Books Online*.

CREATE A DEDUPLICATION-ENABLED DISK LIBRARY USING THE EZ OPERATIONS WIZARD

The following section describes how to create a disk library with deduplication enabled storage targets using the EZ Operations Wizard.

1. From the **EZ Operations Wizard**, click the **Backup Target** button.
2. Select **Disk Library** as your device configuration type.

3. In the **Disk Library Configuration** step, choose the disk library you would like to use and specify the backup destination folder. If the backup destination folder is on a network share, click **Edit** and enter the user account details.
4. In the **Deduplication Policy Creation** step, click **Enable Deduplication** to provide the following details:
 - o A MediaAgent to access the deduplication store
 - o Location of the deduplication store
5. In **Enter Retention Parameters** step, set the disk space capacity to retain backups and the retention period.
6. In the **Summary** screen, review the options you have selected, then either click **Finish** to create the deduplication-enabled disk library or **Back** to return to the previous step to change any of the selections.

RUN AN EZ BACKUP USING THE EZ OPERATIONS WIZARD

The following section describes how to run an EZ Backup using the EZ Operations Wizard.

1. From the **EZ Operations Wizard**, click the **Backup** button.
2. The **EZ Operations Wizard** guides you through the process of configuring schedules, backup options, and alerts.
3. After entering the appropriate information, review your selections on the **Summary** dialog, then either click **Finish** to save the changes or **Back** to return to the previous dialog to change any of the selections.
4. When the backup begins, you can track the progress of the job in the Job Controller.
5. When the status for the job in the Job Controller changes to Completed, the backup has finished.

VIEW BACKUP HISTORY USING THE COMMCELL CONSOLE

After running a backup you may want to verify the backup data. You can do this by viewing the Backup History. The following section describes how to view the Backup History.

1. From the CommCell[®] Browser, right-click the **default** subclient and then click **Backup History**. The **Backup History Filter** dialog box will be displayed.
2. Click **OK**.
The **Backup Job History** window displays the backup job that was just executed. (Once you start performing regular backups, a list of all the backup jobs for the subclient will be displayed.)
By right-clicking a row in the **Backup Job History** window, you can view the following information:
 - o the files, if any, that failed to be backed
 - o details of the backup job
 - o media for the backup job
 - o events for the backup job
 - o the list of files that were backed up
 - o log files

BROWSE AND RESTORE DATA USING THE EZ OPERATIONS WIZARD

The following section describes how to run an EZ Restore using the EZ Operations Wizard.

1. From the **EZ Operations Wizard**, click the **Restore** button.
2. The **EZ Operations Wizard** guides you through the process of choosing browse options, file overwrite options, and restore destinations.
3. After entering the appropriate information, review your selections on the **Summary** dialog, then either click **Finish** to save the changes or **Back** to return to the previous dialog to change any of the selections.

INSTALL SOFTWARE USING THE EZ OPERATIONS WIZARD

The following procedure describes how to install software on computers using the EZ Operations Wizard.

1. From the **EZ Operations Wizard**, click the **Install Software** button.
2. The **Install Wizard** guides you to the steps required to install software on client computers.
3. After entering the required information, review your selections on the **Summary** dialog, the either click **Finish** to save the changes or **Back** to return to the previous dialog to change any of the selections.

DISPLAY THE EZ OPERATIONS WIZARD

You can access the **EZ Operations Wizard** in the following ways:

- From the CommCell Console, click the **EZ Operations Wizard** button  located on the Toolbar.
OR

- From the CommCell Console, click **Tools**, click **Control Panel**, then double-click **EZ Operation Window**.

The **EZ Operations Wizard** is displayed.

WHERE TO GO FROM HERE

You have now installed the CommServe, MediaAgent, and File System iDataAgent. You have also installed the CommCell Console, which is the graphical user interface for the software. You can also install one or more Agents on your individual client computers to perform data protection and recovery operations for specific operating systems or applications. Multiple Agents may be used to protect all types of data residing on a computer. See Express Software Version Support below for information on the Agents supported with the Express version of the software.

The CommCell Console also provides a number of features to assist in protecting and recovering data, including:

- Schedule Backups; refer to *Scheduling* in *Books Online*.
- Configure Alerts; refer to *Alerts and Monitoring* in *Books Online*.
- Configure Libraries; refer to *Library and Drive Configuration* in *Books Online*.
- Plan for Disaster Recovery; refer to *Planning for Disaster Recovery of the CommServe for Small Business or a Single Site* in *Books Online*
- And much more...

For a comprehensive overview of a CommCell, including instructions on installing the software on multiple computers, see the *Getting Started* in *Books Online*.

EXPRESS SOFTWARE VERSION SUPPORT

Each Express software license allows you to set up and configure the following components in a CommCell:

- 25 Clients*
- 25 MediaAgents

* Maximum number of Client count is inclusive of MediaAgents.

UNINSTALL THE EXPRESS SOFTWARE

The following section describes how to uninstall the Express software from the computer.

1. Click **Start**, click **Control Panel**, and then click **Add or Remove Programs**.
2. From the **Add or Remove Programs** dialog, remove the following components in the order shown below by first selecting the component and then clicking **Remove**:
 - File System iDataAgent (Instance001)
 - MediaAgent (Instance001)
 - CommCell Console for Java (Instance001)
 - CommServe (Instance001)
3. The uninstall is now complete.

Back to Top