

Quick Start - Solaris File System *iDataAgent*

TABLE OF CONTENTS

OVERVIEW

Introduction

Key Features

Add-On Components

Terminology

SYSTEM REQUIREMENTS

GETTING STARTED - DEPLOYING IN A GLOBAL ZONE OR SOLARIS SERVER

Where to Install

Method 1: Interactive Install

Method 2: Install Software from CommCell Console

GETTING STARTED - DEPLOYING IN A NON-GLOBAL ZONE

Where to Install

Method 1: Interactive Install

Method 2: Install Software from CommCell Console

GETTING STARTED - DEPLOYMENT ON A CLUSTER

Where to Install

Installing the Solaris File System *iDataAgent* - Clustered Environment

GETTING STARTED - DEPLOYMENT ON A VERITAS CLUSTER

Where to Install

Installing the Solaris File System *iDataAgent* - Veritas Clustered Environment

GETTING STARTED - SOLARIS FILE SYSTEM CONFIGURATION

GETTING STARTED - SOLARIS FILE SYSTEM BACKUP

Perform a Backup

GETTING STARTED - SOLARIS FILE SYSTEM RESTORE

Perform a Restore

Overview - Unix/Linux File System iDataAgents

TABLE OF CONTENTS

Introduction

Key Features

- Simplified Data Management
- Point-In-Time Recovery
- SnapProtect Backup
- Backup and Recovery Failovers
- Efficient Job Management and Reporting
- Block Level Deduplication

Add-On Components

- SRM for Unix File System
- 1-Touch
- OnePass Agent
- Content Indexing and Search
- Desktop Browse

Terminology

INTRODUCTION

Calyпсо software provides a simplified end-to-end protection of file system data residing on all the Unix computers in your enterprise. In addition to complete protection of file system data for disaster recovery, it also provides a robust and comprehensive backup and recovery solution with significant speed performance and efficient use of disk and tape drives. It also assists you in full system rebuilds and eliminates recovery failures.

KEY FEATURES

The Unix File System iDataAgents offers the following key features:

SIMPLIFIED DATA MANAGEMENT

The Unix File System iDataAgents enables easy management of all the UNIX systems in your environment, by providing a singular approach to manage the data using the same unified console and infrastructure.

POINT-IN-TIME RECOVERY

In the event of a serious system failure, such as the breakdown of hardware, software, or operating systems, the Unix File System iDataAgent provides point-in-time recovery of files at any given time.

SNAPPROTECT BACKUP

SnapProtect backup enables you to create a point-in-time snapshot by temporarily quiescing the data, taking a snapshot, and then resuming live operations. SnapProtect backup works in conjunction with hardware snapshot engines.

BACKUP AND RECOVERY FAILOVERS

In the event that a MediaAgent used for the backup or recovery operation fails, it is automatically resumed on alternate MediaAgents.

In such cases, the backup or restore job will not restart from the beginning, but will resume from the point of failure. This is especially useful for backups and restores of large amount of file system data.

In the event, that a network goes down, the backup and recovery jobs are resumed on alternate data paths. Similarly, in the event of a device failure, the jobs are automatically switched to alternate disk and tape drives.

EFFICIENT JOB MANAGEMENT AND REPORTING

You can view and verify the status of backup and recovery operations from the Job Controller and Event Viewer windows within the CommCell Console. You can also track the status of the jobs using Reports, which can be saved and easily distributed. Reports can be generated for different aspects of data management.

WHERE TO GO NEXT

Linux

Walks you through the process of installing and configuring the File System iDataAgent for Linux.

AIX

Walks you through the process of installing and configuring the File System iDataAgent for AIX

FreeBSD

Walks you through the process of installing and configuring the File System iDataAgent for FreeBSD.

HP-UX

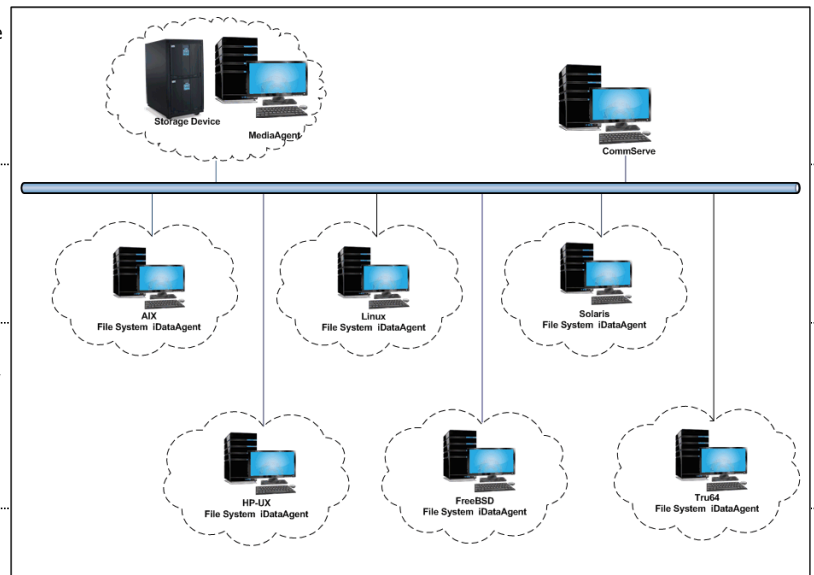
Walks you through the process of installing and configuring the File System iDataAgent for HP-UX.

Solaris

Walks you through the process of installing and configuring the File System iDataAgent for Solaris.

Tru64

Walks you through the process of installing and configuring the File System iDataAgent for Tru64.



You also have the flexibility to customize the reports to display only the required data and save them to any specified location in different formats. For example, you can create a backup job summary report to view at-a-glance the completed backup jobs.

In addition, you can also schedule these reports to be generated and send them on email without user intervention.

BLOCK LEVEL DEDUPLICATION

Deduplication provides a smarter way of storing data by identifying and eliminating the duplicate items in a data protection operation.

Deduplication at the data block level compares blocks of data against each other. If an object (file, database, etc.) contains blocks of data that are identical to each other, then block level deduplication eliminates storing the redundant data and reduces the size of the object in storage. This way dramatically reduces the backup data copies on both the disk and tapes.

ADD-ON COMPONENTS

SRM FOR UNIX FILE SYSTEM

SRM is integrated with UNIX File System iDataAgent to provide several advanced reporting capabilities for your backups. When enabled, backup jobs collect details on the file systems currently being used or not used, the memory and hardware resources consumed, storage usage, and granular file-level analytics.

SRM reports include detailed information on the state of your file system data, including free space, used space, file count, file sizes, directory structure, and many other useful statistics.

In addition, **SRM summaries** provide a graphical, real-time representation of usage information such as memory and CPU utilization. Optional file-level analytics provides even more granular details at the file-level for optimizing your storage resources.

SRM integration with UNIX File System iDataAgent can be easily enabled with your backups to take advantage of these features.

1-TOUCH

1-Touch recovery helps to recover a crashed system in the least amount of time. By automatically rebuilding the operating system, you can recover systems with defective components such as inaccessible volumes or crashed disks. You don't need to reinstall the individual software packages or operating systems manually.

ONEPASS AGENT

The OnePass Agent is an integrated File System agent which backs up and archives the qualified data. It reclaims backup storage space when files and stubs are deleted on the primary storage.

CONTENT INDEXING AND SEARCH

Content Indexing and Search enables users to content index their data and later search the data from a user-friendly web interface. The users can also perform restore operations or other advanced actions on the searched data.

DESKTOP BROWSE

Desktop Browse enables users to browse and restore data from a Web Browser, which provides the facility to access and restore data from anywhere.

TERMINOLOGY

The Unix File System documentation uses the following terminology:

CLIENT	The computer in which the iDataAgent is installed and contains the data to be secured.
BACKUP SET	A group of subclients which includes all of the data backed up by the iDataAgent.
SUBCLIENT	The Unix file system data to be backed up.

[Back to Top](#)

System Requirements - Solaris File System iDataAgent

AIX	HP-UX	FreeBSD	Linux	Solaris	Tru64	Supported Features
-----	-------	---------	-------	---------	-------	--------------------

The following are the requirements for Solaris File System iDataAgent:

OPERATING SYSTEM		PROCESSOR
SOLARIS	Solaris 9	Sparc5 or higher recommended
	Solaris 11.x	Sparc5 or higher recommended
	Solaris 11.x	x64
	Solaris 10.x with a minimum of SunOS (Sparc) Patch 119963-14	Sparc5 or higher recommended
	Solaris 10.x (OpenSolaris supported)	x64
	Solaris 10.x (Flying Zones supported)	Sparc5 or higher recommended

CLUSTER - SUPPORT

The software can be installed on a Cluster if clustering is supported by the above-mentioned operating systems.

For information on supported cluster types, see Clustering - Support.

HARD DRIVE

750 MB minimum of hard disk space for software

100 MB of additional hard disk space for log file growth

500 MB of reserved hard disk space for the Job Results directory

1 GB of temp space required for install or upgrade (where the temp folder resides)

For information on space requirements to install/upgrade the File System and service pack, see Service Pack - System Requirements.

MEMORY

16 MB RAM minimum required beyond the requirements of the operating system and running applications

Swap space = 2*RAM size

SOLARIS ZONES/CONTAINERS SUPPORT

Data Protection of data residing on global and non-global zones is supported.

For a comprehensive list of supported components, see Unix Virtualization.

PERIPHERALS

DVD-ROM drive

Network Interface Card

MISCELLANEOUS

NETWORK

TCP/IP Services configured on the computer.

SUPPORTED FILE SYSTEMS

Unix File System (UFS)

VERITAS File System (VxFS)

VERITAS Cluster File System (VxCFS)

Zettabyte File System (ZFS)

VOLUME MANAGERS

Veritas Volume Manager (VxVM) 5.0 or higher

Solaris Volume Manager (SVM)

DISCLAIMER

Minor revisions and/or service packs that are released by application and operating system vendors are supported by our software but may not be individually listed in our System Requirements. We will provide information on any known caveat for the revisions and/or service packs. In some cases, these revisions and/or service packs affect the working of our software. Changes to the behavior of our software resulting from an application or operating system revision/service pack may be beyond our control. The older releases of our software may not support the platforms supported in the current release. However, we will make every effort to correct the behavior in the current or future releases when necessary. Please contact your Software Provider for any problem with a specific application or operating system.

Additional considerations regarding minimum requirements and End of Life policies from application and operating system vendors are also applicable

Getting Started - Solaris File System - Deploying in a Global Zone or Solaris Server



Use the following steps to install the File System iDataAgent on a Global Zone or a Solaris Server.

WHERE TO INSTALL

Install the software directly on the computer that you wish to protect. This can be one of the following:

- Solaris Servers
- Computer hosting the global zone

It is recommended to install the software on the global zone to protect non-changing or static data on non-global zones. If the data is dynamic or contains application data, install the software on the non-global zone.

Make sure the computer satisfies the minimum requirements specified in the System Requirements.

INSTALLATION

The software can be installed using one of the following methods:

METHOD 1: INTERACTIVE INSTALL

Use this procedure to directly install the software from the installation package or a network drive.

METHOD 2: INSTALL SOFTWARE FROM COMMCCELL CONSOLE

Use this procedure to remotely install the software on a client computer.

METHOD 1: INTERACTIVE INSTALL

1. Logon to the client computer as **root** or as a sudo user.
If you are installing the software using a sudo user account, make sure that sudo user account is configured on this computer. For more information, see FAQ - Install.
2. If you are installing the software from CD, run the following command to mount the CD:

```
mount -r -F hsfs /dev/sr0 /cdrom
```


Run the following command from the Software Installation Package or mount point:

```
./cwpkgadd
```
3. The product banner and other information is displayed.
Press **Enter**.
4. Read the license agreement. Type **y** and press **Enter**.
5. Press **Enter**.
6. If your computer is 32-bit, press **Enter**.
If your computer is 64-bit, see Install Unix Agents on 64-bit Platform for step-by-step procedure.
7. Press **Enter**.

BEFORE YOU BEGIN

Download Software Packages

Download the latest software package to perform the install.

System Requirements

Verify that the computer in which you wish to install the software satisfies the System Requirements.

Please select a setup task you want to perform from the list below:

Advance options provide extra setup features such as creating custom package, recording/replaying user selections and installing External Data Connector software.

1) Install data protection agents on this computer

2) Advance options

3) Exit this menu

Your choice: [1]

32 or 64?

This machine supports both 32 bit and 64 bit binaries. By default, we will install 32 bit binary set that has full support for all the modules included in this package. Please note that 64 bit binary set currently only support limited modules.

1) 32 bit

2) 64 bit

Your choice: [1]

Certain Calypso packages can be associated with a virtual

8. If you have only one network interface, press **Enter** to accept the default network interface name and continue.
If you have multiple network interfaces, enter the interface name that you wish to use as default, and then press **Enter**.

The interface names and IP addresses depend on the computer in which the software is installed and may be different from the example shown.

9. Press **Enter**.

10. Type the number associated with the **Unix File System iDataAgent** and press **Enter**.

11. A confirmation screen will mark your choice with an "X".
Type **d** for **Done**, and press **Enter**.

12. Press **Enter**.

13. Type the appropriate number to install the latest software scripts and press **Enter**.

- Select **Download from the software provider website** to download the latest software scripts. Make sure you have internet access.
- Select **Use the one in the installation media** to install the software scripts from the package or share from which the installation is currently being performed.
- Select **Use the copy I already have by entering its unix path**, to specify the path if you have the software script in an alternate location.

14. Press **Enter**.

It is recommended to download the latest Service pack(s). Type **Yes** and press **Enter** to automatically install the available updates during installation.

IP, or in other words, installed on a "virtual machine" belonging to some cluster. At any given time the virtual machine's services and IP address are active on only one of the cluster's servers. The virtual machine can "fail-over" from one server to another, which includes stopping services and deactivating IP address on the first server and activating the IP address/services on the other server.

You now have a choice of performing a regular Calypso install on the physical host or installing Calypso on a virtual machine for operation within a cluster.

Most users should select "Install on a physical machine" here.

- 1) Install on a physical machine
- 2) Install on a virtual machine
- 3) Exit

Your choice: [1]

We found one network interface available on your machine. We will associate it with the physical machine being installed, and it will also be used by the CommServe to connect to the physical machine. Note that you will be able to additionally customize Datapipe Interface Pairs used for the backup data traffic later in the Calypso Java GUI.

Please check the interface name below, and make connections if necessary:

Physical Machine Host Name: [angel.company.com]

Please specify the client name for this machine.

It does not have to be the network host name: you can enter any word here without spaces. The only requirement is that it must be unique on the CommServe.

Physical Machine Client name: [angel]

Install Calypso on physical machine angel

Please select the Calypso module(s) that you would like to install.

[] 1) MediaAgent [1301] [CVGxMA]

[] 2) UNIX File System iDataAgent [1101] [CVGxIDA]

[a=all n=none r=reverse q=quit d=done >=next <=previous ? =help]

Enter number(s)/one of "a,n,r,q,d,>,<," here:2

Install Calypso on physical machine angel

Please select the Calypso module(s) that you would like to install.

[] 1) MediaAgent [1301] [CVGxMA]

[X] 2) UNIX File System iDataAgent [1101] [CVGxIDA]

[a=all n=none r=reverse q=quit d=done >=next <=previous ? =help]

Enter number(s)/one of "a,n,r,q,d,>,<," here:d

Do you want to use the agents for restore only without consuming licenses? [no]

Installation Scripts Pack provides extra functions and latest support and fix performed during setup time. Please specify how you want to get this pack.

If you choose to download it from the website now, please make sure you have internet connectivity at this time. This process may take some time depending on the internet connectivity.

1) Download from the software provider website.

2) Use the one in the installation media

3) Use the copy I already have by entering its unix path

Your choice: [1] 2

Keep Your Install Up to Date - Latest Service Pack

Latest Service Pack provides extra functions and latest support and fix for the packages you are going to install. You can download the latest service pack from software provider website.

If you decide to download it from the website now, please make sure you have internet connectivity at this time. This process may take some time depending on the internet connectivity.

15. Press **Enter** to accept the default path.
- If you want to specify a different path, type the path and then press **Enter**.
 - If you want to install the software binaries to an NFS shared drive, specify the directory on which you have mounted the NFS file system and then press **Enter**.
- In order to make sure that the client computer has `read/write` access to NFS shared drive, review the steps described in *Installing Software Binaries to an NFS Shared Drive*.

Do not use the following characters when specifying the path:

!@#%&*():?\
 \

16. Press **Enter** to accept the default location.
- Enter a path to modify the default location and press **Enter**.
 - All the modules installed on the computer will store the log files in this directory.
17. Press **Enter**.

18. Type the **Group name** and press **Enter**.
 Press **Enter** again.

19. Press **Enter** to accept the default value for **Number of Streams**.
- You can type the **Number of Streams** that you plan to run at the same time and then press **Enter**.

20. Press **Enter** if you do not want to apply the changes now.
- If you want to apply the changes now, type **Yes** and then press **Enter**.
 - You will come across this prompt when you install the software on the earlier versions of Solaris.

21. Press **Enter**.
- You will see this prompt if you have accepted the default **no** and pressed **Enter** in the above step.

Do you want to download the latest service pack now? [no]

Please specify where you want us to install Calypso binaries.

It must be a local directory and there should be at least 176MB of free space available. All files will be installed in a "calypso" subdirectory, so if you enter "/opt", the files will actually be placed into "/opt/calypso".

Installation Directory: [/opt]

Please specify where you want to keep Calypso log files.

It must be a local directory and there should be at least 100MB of free space available. All log files will be created in a "calypso/Log_Files" subdirectory, so if you enter "/var/log", the logs will actually be placed into "/var/log/calypso/Log_Files".

Log Directory: [/var/log]

Most of Software processes run with root privileges, but some are launched by databases and inherit database access rights. To make sure that registry and log files can be written to by both kinds of processes we can either make such files world-writeable or we can grant write access only to processes belonging to a particular group, e.g. a "calypso" or a "dba" group.

We highly recommend now that you create a new user group and enter its name in the next setup screen. If you choose not to assign a dedicated group to Software processes, you will need to specify the access permissions later.

If you're planning to backup Oracle DB you should use "dba" group.

Would you like to assign a specific group to Software? [yes]

Please enter the name of the group which will be assigned to all Software files and on behalf of which all Software processes will run.

In most of the cases it's a good idea to create a dedicated "calypso" group. However, if you're planning to use Oracle iDataAgent or SAP Agent, you should enter Oracle's "dba" group here.

Group name: skyl

REMINDER

If you are planning to install Calypso Informix, DB2, PostgreSQL, Sybase or Lotus Notes iDataAgent, please make sure to include Informix, DB2, etc. users into group "skyl".

Press <ENTER> to continue ...

Number of Streams

IMPORTANT : Please read install document "Configure Kernel Parameters - Unix/Macintosh" from "Books Online" before you start configuring kernel parameters. Please enter the total number of streams that you plan to run at the same time. We need to make sure that you have enough semaphores and shared memory segments configured in /etc/system.

Number of streams [10]

We now need to modify the /etc/system configuration file on this computer. It is done to make sure that there will be enough shared memory and semaphores available for Calypso programs. Please review the changes below and answer "yes" if you want us to apply them to the /etc/system file. Otherwise, the installation will proceed, the changes will be saved to some other file, and you will have to apply them manually.

```
set shmsys:shminfo_shmmni=8570 (was 7930)
set shmsys:shminfo_shmsegs=8420 (was 7780)
set semsys:seminfo_semmns=10320 (was 9680)
set semsys:seminfo_semni=8570 (was 7930)
set semsys:seminfo_semmns=8570 (was 7930)
```

Do you want us to apply these changes now? [no]

Changes saved into /etc/system.gal.1744

Press <ENTER> to continue.

22. Press Enter.

You will see this message if you have accepted the default answer and pressed **Enter** in step 20.

Although a 'no' answer can be selected to this question during install, the user should make sure the min requirements (below) for shared memory are met, otherwise the backups may fail (the message in logs is 'could not start the pipeline').

```
set shmsys:shminfo_shmmax=4199304
set shmsys:shminfo_shmmin=1
set semsys:shminfo_shmmni=640
set semsys:shminfo_shmseg=640
set semsys:seminfo_semmns=640
set semsys:seminfo_semmni=640
set semsys:seminfo_semmsl=640
set maxusers=256
```

Press <ENTER> to continue.

23. Type a network TCP port number for the Communications Service (CVD) and press Enter.

Type a network TCP port number for the Client Event Manager Service (EvMgrC) and press **Enter**.

Every instance of Calypso should use a unique set of network ports to avoid interfering with other instances running on the same machine.

The port numbers selected must be from the reserved port number range and have not been registered by another application on this machine.

Please enter the port numbers.

Port Number for CVD : [8400]

Port Number for EvMgrC: [8402]

24. If you do not wish to configure the firewall services, press Enter.

If this computer is separated from the CommServe by firewall(s), type **Yes** and then press **Enter**.

For firewall options and configuration instructions, see Firewall Configuration and continue with the installation.

Is there a firewall between this client and the CommServe?
[no]

25. Type the fully qualified CommServe host name and press Enter.

Ensure that the CommServe is accessible before typing the name; otherwise the installation will fail.

Please specify hostname of the CommServe below. Make sure the hostname is fully qualified, resolvable by the name services configured on this machine.

CommServe Host Name: mycommserve.company.com

26. Press Enter.

Commcell Level Global Filters are set through Calypso GUI's Control Panel in order to filter out certain directories or files from backup Commcell-widely. If you turn on the Global filters, they will be effective to the default subclient. There are three options you can choose to set the filters.

1) Use Cell level policy

2) Always use Global filters

3) Do not use Global filters

Please select how to set the Global Filters for the default subclient? [1]

27. Enter the number associated with the storage policy you want use and press Enter.

If you have not created a storage policy, this message will be displayed.

You may not be prompted for user input.

You can create the Storage Policy later in step 29.

Please select one storage policy for this IDA from the list below:

1) SP_StandAloneLibrary2_2

2) SP_Library3_3

3) SP_MagLibrary4_4

Storage Policy: [1]

There seem to be no Storage Policies configured on the CommServe. Before you can run any backups of this IDA, you will need to install a MediaAgent, create a Storage Policy and assign it to all subclients..

Adjusting modes and permissions of files

Successfully installed Calypso

28. Type 3 and press Enter.

Certain Calypso packages can be associated with a virtual IP, or in other words, installed on a "virtual machine" belonging to some cluster. At any given time the virtual machine's services and IP address are active on only one of the cluster's servers. The virtual machine can "fail-over" from one server to another, which includes stopping services and deactivating IP address on the first server and activating the IP address/services on the other server.

Currently you have Calypso installed on physical node angel.company.com.

Now you have a choice of either adding another package to the existing installation or configure Calypso on a virtual machine for use in a cluster.

1) Add another package to angel.company.com

2) Install Calypso on a virtual machine



If you already selected a storage policy in step 27, proceed to the Configuration section.

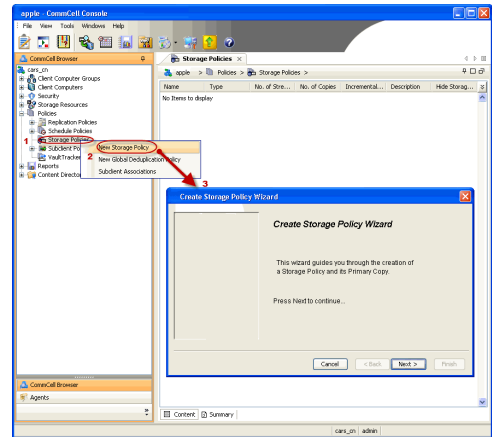
If you do not have Storage Policy created, follow the procedure given below.

29.

1. From the CommCell Browser, navigate to **Policies**.
2. Right-click the **Storage Policies** and then click **New Storage Policy**.
3. Follow the prompts displayed in the Storage Policy Wizard. The required options are mentioned below:
 - o Select the Storage Policy type as **Data Protection and Archiving** and click **Next**.
 - o Enter the name in the **Storage Policy Name** box and click **Next**.
 - o From the **Library** list, click the name of a disk library to which the primary copy should be associated and then click **Next**.
Ensure that you select a library attached to a MediaAgent operating in the current release.
 - o From the **MediaAgent** list, click the name of a MediaAgent that will be used to create the primary copy and then click **Next**.
 - o For the device streams and the retention criteria information, click **Next** to accept default values.
 - o Select **Yes** to enable deduplication for the primary copy.
 - o From the **MediaAgent** list, click the name of the MediaAgent that will be used to store the Deduplication store.
Type the name of the folder in which the deduplication database must be located in the Deduplication Store Location or click the Browse button to select the folder and then click **Next**.
 - o Review the details and click **Finish** to create the Storage Policy.

3) Exit

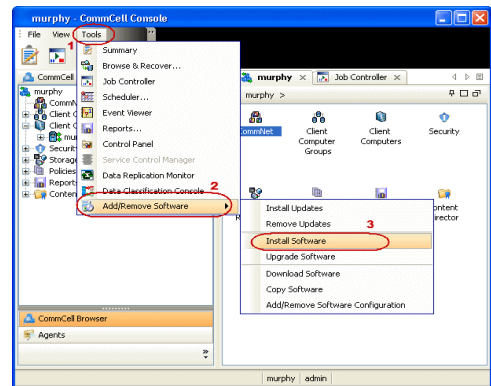
Your choice: [3]



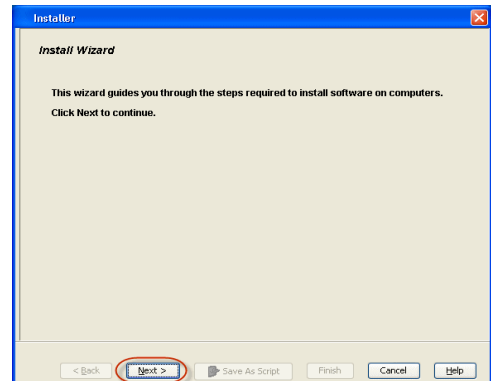
METHOD 2: INSTALL SOFTWARE FROM COMMCELL CONSOLE

For sudo users, Service Pack 4B (or higher) must be available in the CommServe cache before performing the install. See Configure Download Software for step-by-step instruction on downloading the latest software or updates.

1. From the CommCell Browser, select **Tools** menu, point to **Add/Remove Software**, and then click **Install Software**.



2. Click **Next**.



3. Select **Unix and Linux**, and then click **Next**.

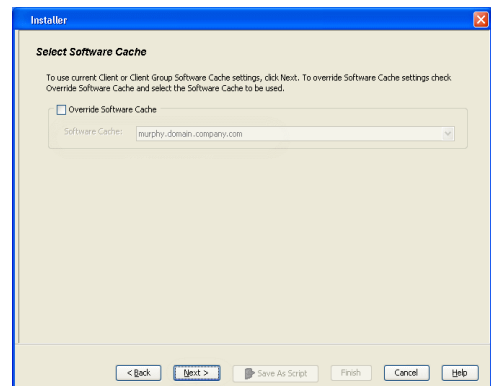
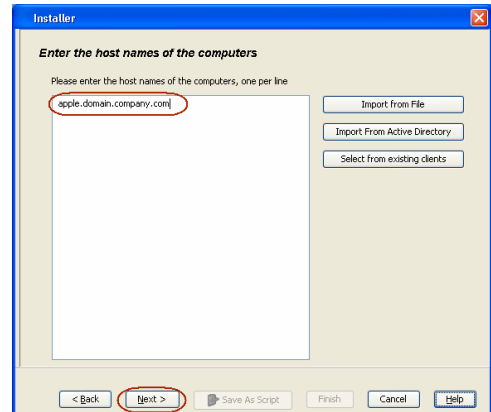
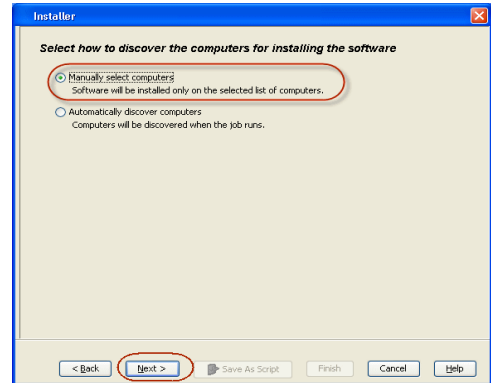
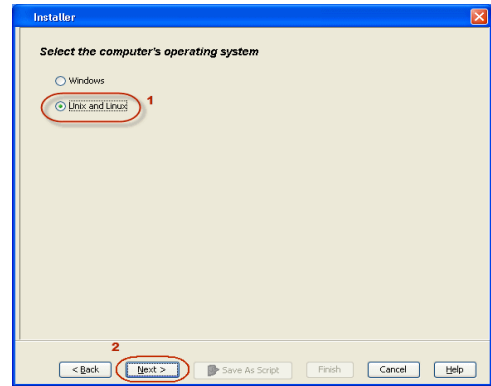
4. Select **Manually Select Computers** ,and then click **Next**.

5. Enter the fully qualified domain name of the computer in which you wish to install.
For example: `apple.domain.company.com`
The **Unix File System iDataAgent** will be installed on this client computer.
Click **Next**.

6. Click **Next**.

7. Type the **User Name** and **Password** of client computer who has administrator or sudo privileges.
Click **Next**.

- If a SUDO user has been created for root access then use **visudo** to change `/etc/sudoers`, so that this user can SUDO into ssh without



being prompted for the password. Change the `/etc/sudoers` by commenting the following lines.

- For Sudo users with restricted privileges, in order to gain privilege to install the software remotely, you need to have `/bin/sh` added to the permission section in the sudoers file.

On SuSE Linux:

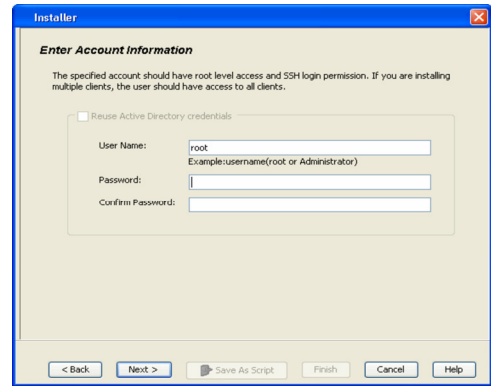
- Defaults targetpw # ask for the password of the target user i.e. root
- ALL ALL=(ALL) ALL # WARNING! Only use this together with 'Defaults targetpw'!

On Red Hat Enterprise Linux/CentOS:

- Defaults requiretty

8. Select **Unix File System iDataAgent**.

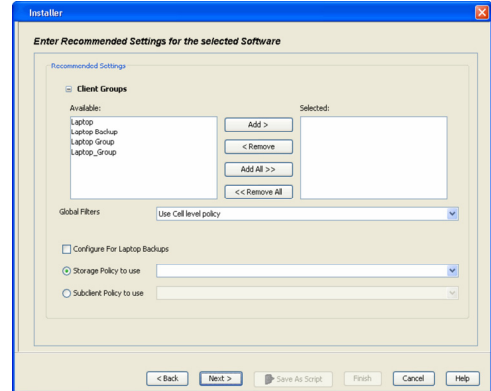
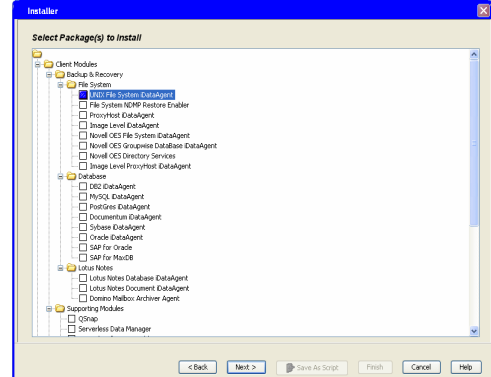
Click **Next**.



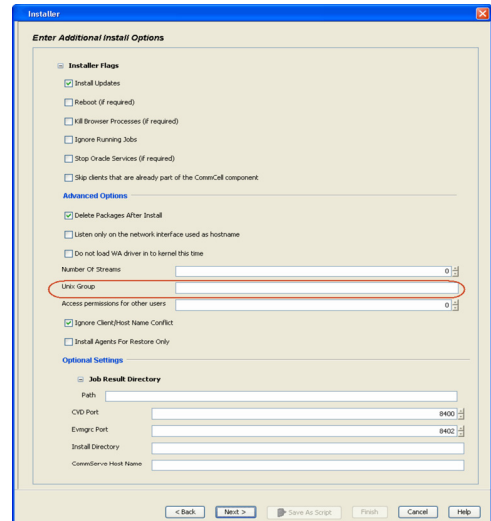
9.

- Select **Client Group** from **Available** and click **Add**.
Do not add more than one Client Group.
- Select a **Storage Policy** from the drop-down list. Click **Next**.

Select the **Configure for Laptop or Desktop Backup** option to install **Backup Monitor** utility. This utility allows you to view the backup job summary from the client computer without opening the CommCell Console. See Monitor - Laptop User for more information.



10. Click **Next**.

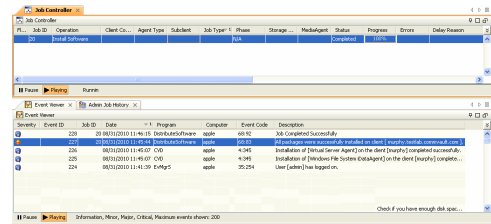
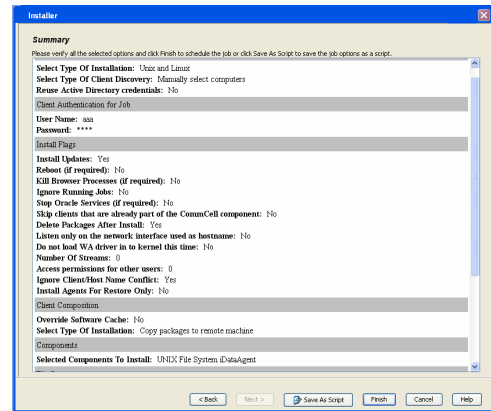
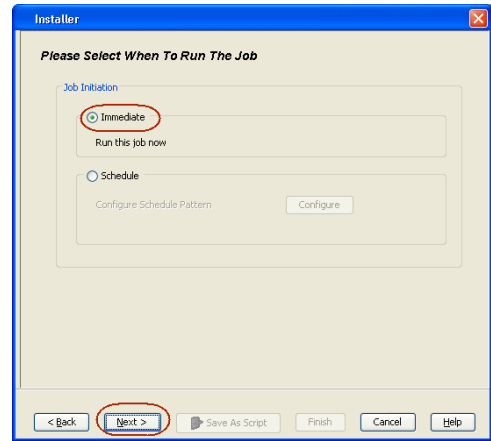


11. Select **Immediate**.

Click **Next**.

12. Click **Finish**.

13. You can track the progress of the job from the **Job Controller** or **Event Viewer** window.



Getting Started - Solaris File System - Deploying in a Non-Global Zone

◀ Previous Next ▶

SKIP THIS PAGE IF YOU ARE NOT INSTALLING THIS AGENT ON A NON-GLOBAL ZONE.

Click **Next** ▶ to continue with the deployment.

Use the following steps to install the File System iDataAgent on a Non Global Zone.

WHERE TO INSTALL

Install the software directly on the computer that you wish to protect on a Non-Global Zone.

It is recommended to install the software on the global zone to protect non-changing or static data on non-global zones. If the data is dynamic or contains application data, install the software on the non-global zone.

Make sure the computer satisfies the minimum requirements specified in the System Requirements.

INSTALLATION

The software can be installed using one of the following methods:

METHOD 1: INTERACTIVE INSTALL

Use this procedure to directly install the software from the installation package or a network drive.

METHOD 2: INSTALL SOFTWARE FROM COMMCCELL CONSOLE

Use this procedure to remotely install the software on a client computer.

RELATED TOPICS

Download Software Packages

Download the latest software package to perform the install.

System Requirements

Verify that the computer in which you wish to install the software satisfies the System Requirements.

Firewall

Provides comprehensive information on firewall.

METHOD 1: INTERACTIVE INSTALL

1. Logon to the client computer as **root** or as a sudo user.

If you are installing the software using a sudo user account, make sure that sudo user account is configured on this computer. For more information, see FAQ - Install.

2. Mount the installation package on the non-global zone.

```
mkdir <Non-Global Zone root location>/<Non-Global Zone local directory>
mount -F lofs <Global zone software Install package mount point> <Non-Global Zone root location>/<Non-Global Zone local directory>
```

Connect to Non-Global Zone terminal

Run the following command from the Software Installation Package or mount point:

```
./cvpkgadd
```

3. The product banner and other information is displayed.

Press **Enter**.

4. Read the license agreement. Type **y** and press **Enter**.

5. Press **Enter**.

6. If your computer is 32-bit, press **Enter**.

If your computer is 64-bit, see Install Unix Agents on 64-bit Platform for step-by-step procedure.

```
Please select a setup task you want to perform from the list below:
```

```
Advance options provide extra setup features such as creating custom package, recording/replaying user selections and installing External Data Connector software.
```

```
1) Install data protection agents on this computer
```

```
2) Advance options
```

```
3) Exit this menu
```

```
Your choice: [1]
```

```
32 or 64?
```

```
This machine supports both 32 bit and 64 bit binaries. By default, we will install 32 bit binary set that has full support for all the modules included in this package. Please note that 64 bit binary set currently only support limited modules.
```

```
1) 32 bit
```

7. Press **Enter**.

2) 64 bit

Your choice: [1]

Certain Calypso packages can be associated with a virtual IP, or in other words, installed on a "virtual machine" belonging to some cluster. At any given time the virtual machine's services and IP address are active on only one of the cluster's servers. The virtual machine can "fail-over" from one server to another, which includes stopping services and deactivating IP address on the first server and activating the IP address/services on the other server.

You now have a choice of performing a regular Calypso install on the physical host or installing Calypso on a virtual machine for operation within a cluster.

Most users should select "Install on a physical machine" here.

1) Install on a physical machine

2) Install on a virtual machine

3) Exit

Your choice: [1]

8. If you have only one network interface, press **Enter** to accept the default network interface name and continue.

If you have multiple network interfaces, enter the interface name that you wish to use as default, and then press **Enter**.

The interface names and IP addresses depend on the computer in which the software is installed and may be different from the example shown.

We found one network interface available on your machine. We will associate it with the physical machine being installed, and it will also be used by the CommServe to connect to the physical machine. Note that you will be able to additionally customize Datapipe Interface Pairs used for the backup data traffic later in the Calypso Java GUI.

Please check the interface name below, and make connections if necessary:

Physical Machine Host Name: [angel.company.com]

9. Press **Enter**.

Please specify the client name for this machine.

It does not have to be the network host name: you can enter any word here without spaces. The only requirement is that it must be unique on the CommServe.

Physical Machine Client name: [angel]

10. Type the number associated with the **Unix File System iDataAgent** and press **Enter**.

Install Calypso on physical machine angel

Please select the Calypso module(s) that you would like to install.

[] 1) MediaAgent [1301] [CVGxMA]

[] 2) UNIX File System iDataAgent [1101] [CVGxIDA]

[a=all n=none r=reverse q=quit d=done >=next <=previous ? =help]

Enter number(s)/one of "a,n,r,q,d,>,<," here:2

11. A confirmation screen will mark your choice with an "X".

Type **d** for **Done**, and press **Enter**.

Install Calypso on physical machine angel

Please select the Calypso module(s) that you would like to install.

[] 1) MediaAgent [1301] [CVGxMA]

[X] 2) UNIX File System iDataAgent [1101] [CVGxIDA]

[a=all n=none r=reverse q=quit d=done >=next <=previous ? =help]

Enter number(s)/one of "a,n,r,q,d,>,<," here:d

12. Press **Enter**.

Do you want to use the agents for restore only without consuming licenses? [no]

13. Type the appropriate number to install the latest software scripts and press **Enter**.

- Select **Download from the software provider website** to download the latest software scripts. Make sure you have internet access.
- Select **Use the one in the installation media** to install the software scripts from the package or share from which the installation is currently being performed.
- Select **Use the copy I already have by entering its unix path**, to specify the path if you have the software script in an alternate location.

Installation Scripts Pack provides extra functions and latest support and fix performed during setup time. Please specify how you want to get this pack.

If you choose to download it from the website now, please make sure you have internet connectivity at this time. This process may take some time depending on the internet connectivity.

1) Download from the software provider website.

2) Use the one in the installation media

3) Use the copy I already have by entering its unix path

Your choice: [1] 2

14. Press **Enter**.

Keep Your Install Up to Date - Latest Service Pack

It is recommended to download the latest Service pack(s). Type **Yes** and press **Enter** to automatically install the available updates during

Latest Service Pack provides extra functions and latest support and fix for the packages you are going to install. You can download the latest service pack from software

installation.

15. Press **Enter** to accept the default path.
- If you want to specify a different path, type the path and then press **Enter**.
 - If you want to install the software binaries to an NFS shared drive, specify the directory on which you have mounted the NFS file system and then press **Enter**.
- In order to make sure that the client computer has `read/write` access to NFS shared drive, review the steps described in *Installing Software Binaries to an NFS Shared Drive*.

Do not use the following characters when specifying the path:

!@#\$\$%^&*():/?\

16. Press **Enter** to accept the default location.
- Enter a path to modify the default location and press **Enter**.
 - All the modules installed on the computer will store the log files in this directory.
17. Type a network TCP port number for the Communications Service (CVD) and press **Enter**.
- Type a network TCP port number for the Client Event Manager Service (EvMgrC) and press **Enter**.

18. Type **Yes** and press **Enter**.

19. Type the **Group name** and press **Enter**.
Press **Enter** again.

20. Press **Enter** to accept the default value for **Number of Streams**.
- You can type the **Number of Streams** that you plan to run at the same time and then press **Enter**.

provider website.

If you decide to download it from the website now, please make sure you have internet connectivity at this time. This process may take some time depending on the internet connectivity.

Do you want to download the latest service pack now? [no]

Please specify where you want us to install Calypso binaries.

It must be a local directory and there should be at least 176MB of free space available. All files will be installed in a "calypso" subdirectory, so if you enter "/opt", the files will actually be placed into "/opt/calypso".

Installation Directory: [/opt]

Please specify where you want to keep Calypso log files.

It must be a local directory and there should be at least 100MB of free space available. All log files will be created in a "calypso/Log_Files" subdirectory, so if you enter "/var/log", the logs will actually be placed into "/var/log/calypso/Log_Files".

Log Directory: [/var/log]

Please enter the name of the group which will be assigned to all Software files and on behalf of which all Software processes will run.

In most of the cases it's a good idea to create a dedicated "calypso" group. However, if you're planning to use Oracle iDataAgent or SAP Agent, you should enter Oracle's "dba" group here.

Group name: skyl

REMINDER

If you are planning to install Calypso Informix, DB2, PostgreSQL, Sybase or Lotus Notes iDataAgent, please make sure to include Informix, DB2, etc. users into group "skyl".

Press <ENTER> to continue ...

Most of Software processes run with root privileges, but some are launched by databases and inherit database access rights. To make sure that registry and log files can be written to by both kinds of processes we can either make such files world-writeable or we can grant write access only to processes belonging to a particular group, e.g. a "calypso" or a "dba" group.

We highly recommend now that you create a new user group and enter its name in the next setup screen. If you choose not to assign a dedicated group to Software processes, you will need to specify the access permissions later.

If you're planning to backup Oracle DB you should use "dba" group.

Would you like to assign a specific group to Software? [yes]

Please enter the name of the group which will be assigned to all Software files and on behalf of which all Software processes will run.

In most of the cases it's a good idea to create a dedicated "calypso" group. However, if you're planning to use Oracle iDataAgent or SAP Agent, you should enter Oracle's "dba" group here.

Group name: skyl

REMINDER

If you are planning to install Calypso Informix, DB2, PostgreSQL, Sybase or Lotus Notes iDataAgent, please make sure to include Informix, DB2, etc. users into group "skyl".

Press <ENTER> to continue ...

Number of Streams

IMPORTANT : Please read install document "Configure Kernel Parameters - Unix/Macintosh" from "Books Online" before you start configuring kernel parameters. Please enter the total number of streams that you plan to run at the same time. We need to make sure that you have enough semaphores

21. Press **Enter** if you do not want to apply the changes now.
- If you want to apply the changes now, type **Yes** and then press **Enter**.
 - You will come across this prompt when you install the software on the earlier versions of Solaris.

and shared memory segments configured in /etc/system.
Number of streams [10]
We now need to modify the /etc/system configuration file on this computer. It is done to make sure that there will be enough shared memory and semaphores available for Calypso programs. Please review the changes below and answer "yes" if you want us to apply them to the /etc/system file. Otherwise, the installation will proceed, the changes will be saved to some other file, and you will have to apply them manually.

```
set shmsys:shminfo_shmmni=8570 (was 7930)
set shmsys:shminfo_shmseg=8420 (was 7780)
set semsys:seminfo_semmns=10320 (was 9680)
set semsys:seminfo_semmni=8570 (was 7930)
set semsys:seminfo_semmsl=8570(was 7930)
Do you want us to apply these changes now? [no]
```

22. Press **Enter**.
You will see this prompt if you have accepted the default **no** and pressed **Enter** in the above step.

Changes saved into /etc/system.gal.1744

Press <ENTER> to continue.

23. Press **Enter**.
You will see this message if you have accepted the default answer and pressed **Enter** in step 21.

Although a 'no' answer can be selected to this question during install, the user should make sure the min requirements (below) for shared memory are met, otherwise the backups may fail (the message in logs is 'could not start the pipeline').

```
set shmsys:shminfo_shmmax=4199304
set shmsys:shminfo_shmmni=1
set semsys:shminfo_shmmni=640
set semsys:shminfo_shmseg=640
set semsys:seminfo_semmns=640
set semsys:seminfo_semmni=640
set semsys:seminfo_semmsl=640
set maxusers=256
```

Press <ENTER> to continue.

24. Type a network TCP port number for the Communications Service (CVD) and press **Enter**.
Type a network TCP port number for the Client Event Manager Service (EvMgrC) and press **Enter**.

Every instance of Calypso should use a unique set of network ports to avoid interfering with other instances running on the same machine.

The port numbers selected must be from the reserved port number range and have not been registered by another application on this machine.

Please enter the port numbers.

Port Number for CVD : [8400]

Port Number for EvMgrC: [8402]

25. If you do not wish to configure the firewall services, press **Enter**.

Is there a firewall between this client and the CommServe?
[no]

If this computer is separated from the CommServe by firewall(s), type **Yes** and then press **Enter**.

For firewall options and configuration instructions, see Firewall Configuration and continue with the installation.

26. Type the fully qualified CommServe host name and press **Enter**.

Ensure that the CommServe is accessible before typing the name; otherwise the installation will fail.

Please specify hostname of the CommServe below. Make sure the hostname is fully qualified, resolvable by the name services configured on this machine.

CommServe Host Name: mycommserve.company.com

27. Press **Enter**.

Commcell Level Global Filters are set through Calypso GUI's Control Panel in order to filter out certain directories or files from backup Commcell-widely. If you turn on the Global filters, they will be effective to the default subclient. There are three options you can choose to set the filters.

1) Use Cell level policy

2) Always use Global filters

3) Do not use Global filters

Please select how to set the Global Filters for the default subclient? [1]

28. Enter the number associated with the storage policy you want use and press **Enter**.

Please select one storage policy for this IDA from the list below:

1) SP_StandAloneLibrary2_2

2) SP_Library3_3

3) SP_MagLibrary4_4

Storage Policy: [1]

If you do not have Storage Policy created, this message will be displayed.

There seem to be no Storage Policies configured on the CommServe. Before you can run any backups of this IDA, you

You may not be prompted for user input.

You can create the Storage Policy later in step 30.

29. Type **3** to the **Exit** option and press **Enter**.
The installation is now complete.

will need to install a MediaAgent, create a Storage Policy and assign it to all subclients..

Adjusting modes and permissions of files

Successfully installed Calypso

Certain Calypso packages can be associated with a virtual IP, or in other words, installed on a "virtual machine" belonging to some cluster. At any given time the virtual machine's services and IP address are active on only one of the cluster's servers. The virtual machine can "fail-over" from one server to another, which includes stopping services and deactivating IP address on the first server and activating the IP address/services on the other server.

Currently you have Calypso installed on physical node angel.company.com.

Now you have a choice of either adding another package to the existing installation or configure Calypso on a virtual machine for use in a cluster.

- 1) Add another package to angel.company.com
- 2) Install Calypso on a virtual machine
- 3) Exit

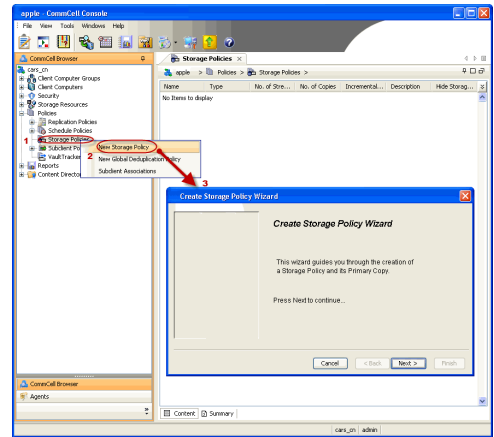
Your choice: [3]



If you already have a storage policy selected in step 28, proceed to the Configuration section.

If you do not have Storage Policy created, follow the procedure given below.

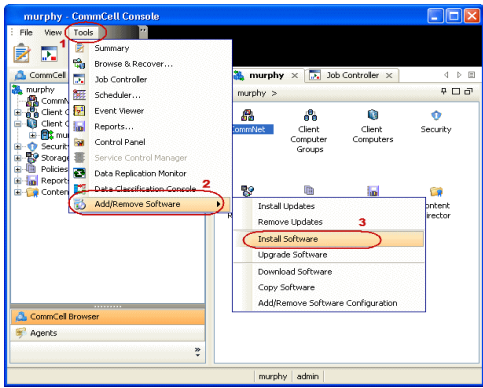
- 30.
1. From the CommCell Browser, navigate to **Policies**.
 2. Right-click the **Storage Policies** and then click **New Storage Policy**.
 3. Follow the prompts displayed in the Storage Policy Wizard. The required options are mentioned below:
 - Select the Storage Policy type as **Data Protection and Archiving** and click **Next**.
 - Enter the name in the **Storage Policy Name** box and click **Next**.
 - From the **Library** list, click the name of a disk library to which the primary copy should be associated and then click **Next**.
Ensure that you select a library attached to a MediaAgent operating in the current release.
 - From the **MediaAgent** list, click the name of a MediaAgent that will be used to create the primary copy and then click **Next**.
 - For the device streams and the retention criteria information, click **Next** to accept default values.
 - Select **Yes** to enable deduplication for the primary copy.
 - From the **MediaAgent** list, click the name of the MediaAgent that will be used to store the Deduplication store.
Type the name of the folder in which the deduplication database must be located in the Deduplication Store Location or click the Browse button to select the folder and then click **Next**.
 - Review the details and click **Finish** to create the Storage Policy.



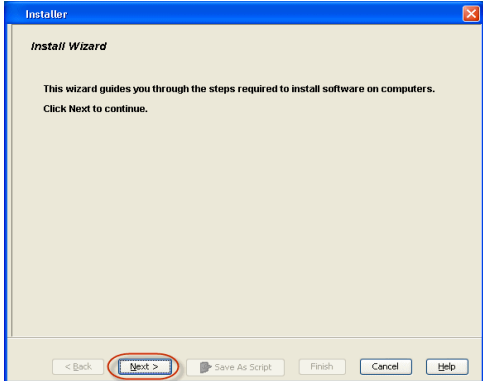
METHOD 2: INSTALL SOFTWARE FROM COMMCELL CONSOLE

For sudo users, Service Pack 4B (or higher) must be available in the CommServe cache before performing the install. See Configure Download Software for step-by-step instruction on downloading the latest software or updates.

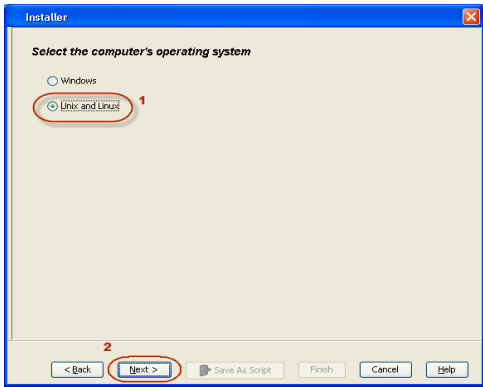
1. From the CommCell Browser, select **Tools** menu, point to **Add/Remove Software**, and then click **Install Software**.



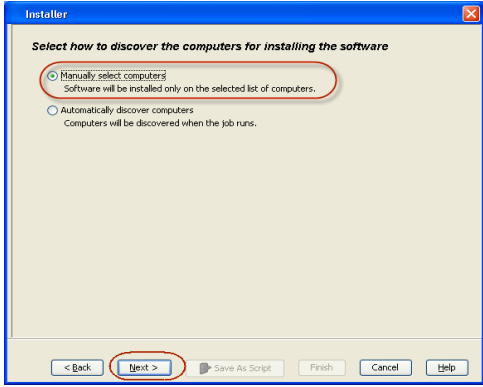
2. Click **Next**.



3. Select **Unix and Linux**, and then click **Next**.

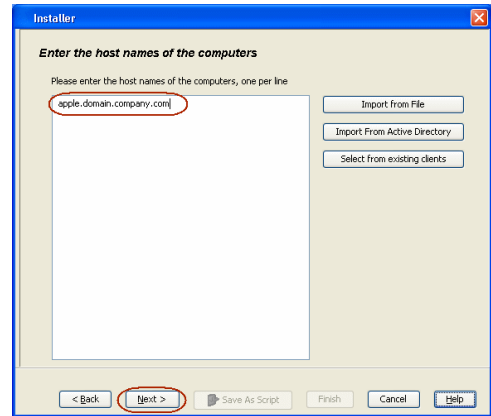


4. Select **Manually Select Computers**, and then click **Next**.



5. Enter the fully qualified domain name of the computer in which you wish to install.
For example: apple.domain.company.com
The **Unix File System iDataAgent** will be installed on this client computer.
Click **Next**.

6. Click **Next**.



7. Type the **User Name** and **Password** of client computer who has administrator or sudo privileges.
Click **Next**.

- If a SUDO user has been created for root access then use **visudo** to change **/etc/sudoers**, so that this user can SUDO into ssh without being prompted for the password. Change the **/etc/sudoers** by commenting the following lines.
- For Sudo users with restricted privileges, in order to gain privilege to install the software remotely, you need to have **/bin/sh** added to the permission section in the sudoers file.

On SuSE Linux:

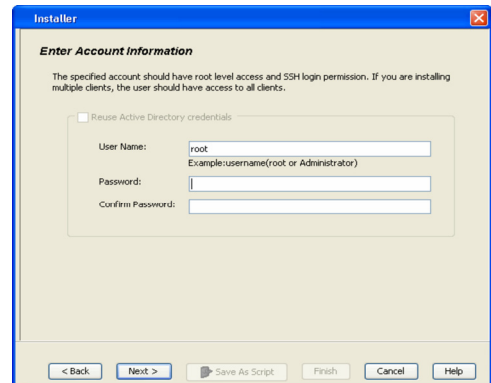
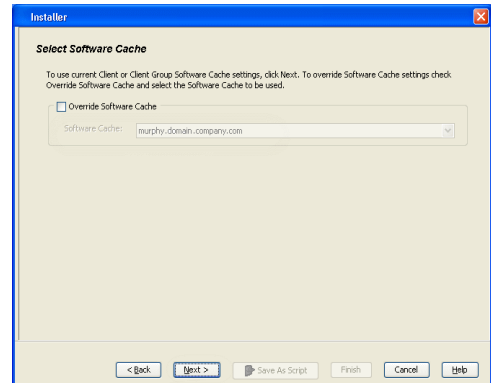
- Defaults targetpw # ask for the password of the target user i.e. root
- ALL ALL=(ALL) ALL # WARNING! Only use this together with 'Defaults targetpw'!

On Red Hat Enterprise Linux/CentOS:

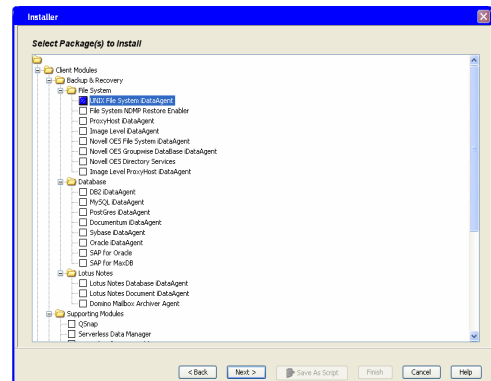
- Defaults requiretty

8. Select **Unix File System iDataAgent**.

Click **Next**.



9. • Select **Client Group** from **Available** and click **Add**.

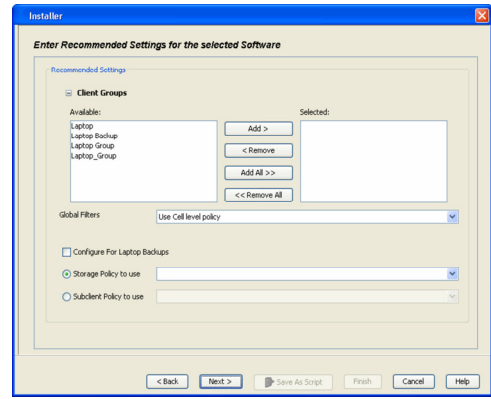


Do not add more than one Client Group.

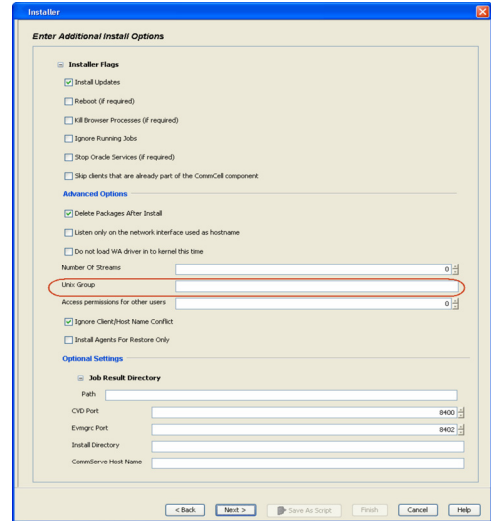
- Select a **Storage Policy** from the drop-down list. Click **Next**.

Select the **Configure for Laptop or Desktop Backup** option to install **Backup Monitor** utility. This utility allows you to view the backup job summary from the client computer without opening the CommCell Console. See Monitor - Laptop User for more information.

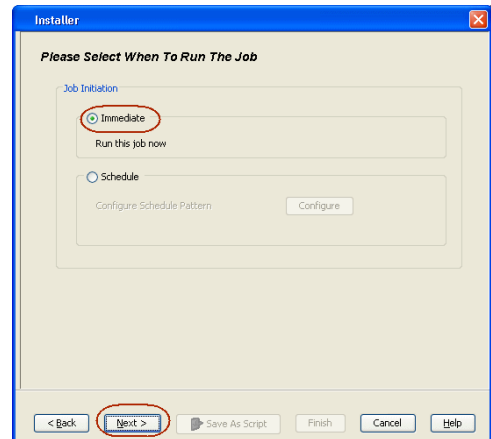
10. Click **Next**.



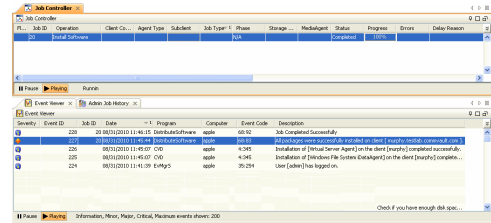
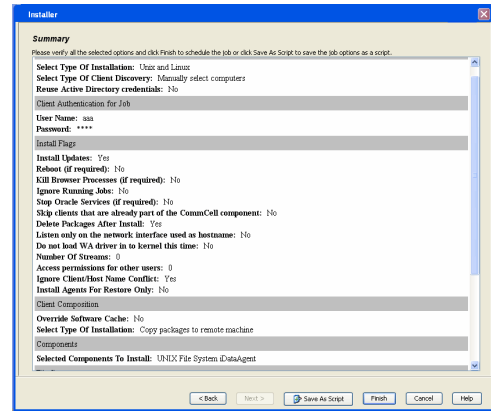
11. Select **Immediate**.
Click **Next**.



12. Click **Finish**.



13. You can track the progress of the job from the **Job Controller** or **Event Viewer** window.



Getting Started - Solaris File System - Deployment on a Cluster

◀ Previous Next ▶

SKIP THIS PAGE IF YOU ARE NOT INSTALLING THIS AGENT ON A CLUSTER.

Click **Next** ▶ to continue with the deployment.

WHERE TO INSTALL

Install the software from the active node in the cluster group. Make sure the cluster group satisfies the minimum requirements specified in the System Requirements.

Follow the steps given below to install the File System iDataAgent in a Clustered Environment.

1. Logon to the client computer as **root** or as a sudo user.
If you are installing the software using a sudo user account, make sure that sudo user account is configured on this computer. For more information, see FAQ - Install.
2. If you are installing the software from CD, run the following command to mount the CD:

```
mount -r -F hsfs /dev/sr0 /cdrom
```


Run the following command from the Software Installation Package or mount point:

```
./cvpkgadd
```
3. The product banner and other information is displayed.
Press **Enter**.
4. Read the license agreement. Type **y** and press **Enter**.
5. Press **Enter**.
6. If your computer is 32-bit, press **Enter**.
If your computer is 64-bit, see Install Unix Agents on 64-bit Platform for step-by-step procedure.
7. Press **Enter**.

BEFORE YOU BEGIN

Download Software Packages

Download the latest software package to perform the install.

System Requirements

Verify that the computer in which you wish to install the software satisfies the System Requirements.

Please select a setup task you want to perform from the list below:

Advance options provide extra setup features such as creating custom package, recording/replaying user selections and installing External Data Connector software.

- 1) Install data protection agents on this computer
- 2) Advance options
- 3) Exit this menu

Your choice: [1]

32 or 64?

This machine supports both 32 bit and 64 bit binaries. By default, we will install 32 bit binary set that has full support for all the modules included in this package. Please note that 64 bit binary set currently only support limited modules.

- 1) All platforms(32 bit)
- 2) FS and MS only(64 bit)

Your choice: [1]

Certain Calypso packages can be associated with a virtual IP, or in other words, installed on a "virtual machine" belonging to some cluster. At any given time the virtual machine's services and IP address are active on only one of the cluster's servers. The virtual machine can "fail-over" from one server to another, which includes stopping services and deactivating IP address on the first server and activating the IP address/services on the other server.

You now have a choice of performing a regular Calypso install on the physical host or installing Calypso on a virtual machine for operation within a cluster.

Most users should select "Install on a physical machine" here.

- 1) Install on a physical machine
- 2) Install on a virtual machine
- 3) Exit

8. If you have only one network interface, press **Enter** to accept the default network interface name and continue.
- If you have multiple network interfaces, enter the interface name that you wish to use as default, and then press **Enter**.

The interface names and IP addresses depend on the computer in which the software is installed and may be different from the example shown.

9. Press **Enter**.

10. Press **Enter**.

11. Type the number associated with the **Unix File System iDataAgent** and press **Enter**.

12. A confirmation screen will mark your choice with an "**X**".
Type **d** for **Done**, and press **Enter**.

13. Press **Enter**.

14. Type the appropriate number to install the latest software scripts and press **Enter**.

- Select **Download from the software provider website** to download the latest software scripts. Make sure you have internet access.
- Select **Use the one in the installation media** to install the software scripts from the package or share from which the installation is currently being performed.
- Select **Use the copy I already have by entering its unix path**, to specify the path if you have the software script in an alternate location.

15. Press **Enter**.

It is recommended to download the latest Service pack(s). Type **Yes** and press **Enter** to automatically install the available updates during installation.

16. Press **Enter** to accept the default path.

- If you want to specify a different path, type the path and then press **Enter**.

Your choice: [1]

Physical Machine Host Name

Network interfaces with the following IPs have been found available on your system. One of these interfaces should be associated with the physical machine being installed. It will also be used by the CommServe to initiate connections to the physical machine. Note that you will be able to additionally customize Datapipe Interface Pairs used for the backup data traffic later in the Simpna Java GUI.

Please select the correct network interface below.

- 1) angel.company.com
- 2) abc.company.com

Interface number: [1]

Physical Machine Host Name

Please verify the physical machine interface name below. Make it as complete (with fully qualified domain name) as possible. Physical Machine Host Name: [angel.company.com]

Please specify the client name for this machine.

It does not have to be the network host name: you can enter any word here without spaces. The only requirement is that it must be unique on the CommServe.

Physical Machine Client name: [angel]

Install Calypso on physical machine angel

Please select the Calypso module(s) that you would like to install.

[] 1) MediaAgent [1301] [CVGxMA]
[] 2) UNIX File System iDataAgent [1101] [CVGxIDA]
[a=all n=none r=reverse q=quit d=done >=next <=previous ? =help]

Enter number(s)/one of "a,n,r,q,d,>,<," here:2

Install Calypso on physical machine angel

Please select the Calypso module(s) that you would like to install.

[] 1) MediaAgent [1301] [CVGxMA]
[X] 2) UNIX File System iDataAgent [1101] [CVGxIDA]
[a=all n=none r=reverse q=quit d=done >=next <=previous ? =help]

Enter number(s)/one of "a,n,r,q,d,>,<," here:d

Do you want to use the agents for restore only without consuming licenses? [no]

Installation Scripts Pack provides extra functions and latest support and fix performed during setup time. Please specify how you want to get this pack.

If you choose to download it from the website now, please make sure you have internet connectivity at this time. This process may take some time depending on the internet connectivity.

- 1) Download from the software provider website.
- 2) Use the one in the installation media
- 3) Use the copy I already have by entering its unix path

Your choice: [1] 2

Keep Your Install Up to Date - Latest Service Pack

Latest Service Pack provides extra functions and latest support and fix for the packages you are going to install. You can download the latest service pack from software provider website.

If you decide to download it from the website now, please make sure you have internet connectivity at this time. This process may take some time depending on the internet connectivity.

Do you want to download the latest service pack now? [no]

Please specify where you want us to install Calypso binaries.

It must be a local directory and there should be at least 176MB of free space available. All files will be installed

- If you want to install the software binaries to an NFS shared drive, specify the directory on which you have mounted the NFS file system and then press **Enter**.

In order to make sure that the client computer has `read/write` access to NFS shared drive, review the steps described in *Installing Software Binaries to an NFS Shared Drive*.

Do not use the following characters when specifying the path:

!@#%\$%^&*():/?\

17. Press **Enter** to accept the default location.

- Enter a path to modify the default location and press **Enter**.
- All the modules installed on the computer will store the log files in this directory.

18. Type **Yes** and press **Enter**.

19. Type the **Group name** and press **Enter**.
Press **Enter** again.

20. Press **Enter** to accept the default value for **Number of Streams**.

You can type the **Number of Streams** that you plan to run at the same time and then press **Enter**.

21. Press **Enter** if you do not want to apply the changes now.

- If you want to apply the changes now, type **Yes** and then press **Enter**.
- You will come across this prompt when you install the software on the earlier versions of Solaris.

22. Press **Enter**.

You will see this prompt if you have accepted the default **no** and pressed **Enter** in the above step.

in a "calypso" subdirectory, so if you enter "/opt", the files will actually be placed into "/opt/calypso".

Installation Directory: [/opt]

Please specify where you want to keep Calypso log files.

It must be a local directory and there should be at least 100MB of free space available. All log files will be created in a "calypso/Log_Files" subdirectory, so if you enter "/var/log", the logs will actually be placed into "/var/log/calypso/Log_Files".

Log Directory: [/var/log]

Most of Software processes run with root privileges, but some are launched by databases and inherit database access rights. To make sure that registry and log files can be written to by both kinds of processes we can either make such files world-writeable or we can grant write access only to processes belonging to a particular group, e.g. a "calypso" or a "dba" group.

We highly recommend now that you create a new user group and enter its name in the next setup screen. If you choose not to assign a dedicated group to Software processes, you will need to specify the access permissions later.

If you're planning to backup Oracle DB you should use "dba" group.

Would you like to assign a specific group to Software?
[yes]

Please enter the name of the group which will be assigned to all Software files and on behalf of which all Software processes will run.

In most of the cases it's a good idea to create a dedicated "calypso" group. However, if you're planning to use Oracle iDataAgent or SAP Agent, you should enter Oracle's "dba" group here.

Group name: skyl

REMINDER

If you are planning to install Calypso Informix, DB2, PostgreSQL, Sybase or Lotus Notes iDataAgent, please make sure to include Informix, DB2, etc. users into group "skyl".

Press <ENTER> to continue ...

Number of Streams

IMPORTANT : Please read install document "Configure Kernel Parameters - Unix/Macintosh" from "Books Online" before you start configuring kernel parameters. Please enter the total number of streams that you plan to run at the same time. We need to make sure that you have enough semaphores and shared memory segments configured in /etc/system.

Number of streams [10]

We now need to modify the /etc/system configuration file on this computer. It is done to make sure that there will be enough shared memory and semaphores available for Calypso programs. Please review the changes below and answer "yes" if you want us to apply them to the /etc/system file. Otherwise, the installation will proceed, the changes will be saved to some other file, and you will have to apply them manually.

set shmsys:shminfo_shmmni=8570 (was 7930)

set shmsys:shminfo_shmseg=8420 (was 7780)

set semsys:seminfo_semmns=10320 (was 9680)

set semsys:seminfo_semmni=8570 (was 7930)

set semsys:seminfo_semmns1=8570 (was 7930)

Do you want us to apply these changes now? [no]

Changes saved into /etc/system.gal.1744

Press <ENTER> to continue.

23. Press Enter.

You will see this message if you have accepted the default answer and pressed **Enter** in step 21.

Although a 'no' answer can be selected to this question during install, the user should make sure the min requirements (below) for shared memory are met, otherwise the backups may fail (the message in logs is 'could not start the pipeline').

```
set shmsys:shminfo_shmmax=4199304
set shmsys:shminfo_shmmmin=1
set semsys:shminfo_shmmni=640
set semsys:shminfo_shmseg=640
set semsys:seminfo_semmns=640
set semsys:seminfo_semmni=640
set semsys:seminfo_semmsl=640
set maxusers=256
Press <ENTER> to continue.
```

24. Type a network TCP port number for the Communications Service (CVD) and press Enter.

Type a network TCP port number for the Client Event Manager Service (EvMgrC) and press **Enter**.

Every instance of Calypso should use a unique set of network ports to avoid interfering with other instances running on the same machine.

The port numbers selected must be from the reserved port number range and have not been registered by another application on this machine.

Please enter the port numbers.

Port Number for CVD : [8400]

Port Number for EvMgrC: [8402]

25. If you do not wish to configure the firewall services, press Enter.

If this computer is separated from the CommServe by firewall(s), type **Yes** and then press **Enter**.

For firewall options and configuration instructions, see Firewall Configuration and continue with the installation.

Is there a firewall between this client and the CommServe?
[no]

26. Type the fully qualified CommServe host name and press Enter.

Ensure that the CommServe is accessible before typing the name; otherwise the installation will fail.

Please specify hostname of the CommServe below. Make sure the hostname is fully qualified, resolvable by the name services configured on this machine.

CommServe Host Name: mycommserve.company.com

27. Press Enter.

Commcell Level Global Filters are set through Calypso GUI's Control Panel in order to filter out certain directories or files from backup Commcell-widely. If you turn on the Global filters, they will be effective to the default subclient. There are three options you can choose to set the filters.

1) Use Cell level policy

2) Always use Global filters

3) Do not use Global filters

Please select how to set the Global Filters for the default subclient? [1]

28. Type the appropriate number to select the Client Group and press Enter.

This screen will be displayed only if Client Groups are configured for the CommCell

Client Group(s) is currently configured on CommServe mycommserve.company.com. Please choose the group(s) that you want to add this client angel.company.com to. The selected group(s) will be marked (X) and can be deselected if you enter the same number again. After you are finished with the selection, select "Done with the Selection".

[] 1) Unix

[] 2) DR

[a=all n=none r=reverse q=quit d=done >=next <=previous ? =help]s

Enter number(s)/one of "a,n,r,q,d,>,<,>?" here: 2

Client Group(s) is currently configured on CommServe cs.company.com. Please choose the group(s) that you want to add this client client.company.com to. The selected group(s) will be marked (X) and can be deselected if you enter the same number again. After you are finished with the selection, select "Done with the Selection".

[] 1) Unix

[X] 2) DR

[a=all n=none r=reverse q=quit d=done >=next <=previous ? =help]s

Enter number(s)/one of "a,n,r,q,d,>,<,>?" here: d

29. A confirmation screen will mark your choice with an "X".

Type **d** for **Done**, and press **Enter**.

30. Enter the number associated with the storage policy you want use and press Enter.

Please select one storage policy for this IDA from the list below:

1) SP_StandAloneLibrary2_2

2) SP_Library3_3

If you do not have Storage Policy created, this message will be displayed. You may not be prompted for user input.

You can create the Storage Policy later in step 41.

31. Type **2** to install **Unix File System iDataAgent** on a Virtual machine , and press **Enter**.

32. If you have only one network interface, press **Enter** to accept the default network interface name and continue.
If you have multiple network interfaces, enter the interface name that you wish to use as default, and then press **Enter**.

The interface names and IP addresses depend on the computer in which the software is installed and may be different from the example shown.

33. Type the **Virtual Machine Client Name**, and press **Enter**.

34. Type the number associated with the **Unix File System iDataAgent** and press **Enter**.

35. A confirmation screen will mark your choice with an **"X"**.
Type **d** for **Done**, and press **Enter**.

```
3) SP_MagLibrary4_4
```

```
Storage Policy: [1]
```

```
There seem to be no Storage Policies configured on the
CommServe. Before you can run any backups of this IDA, you
will need to install a MediaAgent, create a Storage Policy
and assign it to all subclients..
```

```
Adjusting modes and permissions of files
```

```
Successfully installed Calypso
```

```
Cluster Support
```

```
Certain Calypso packages can be associated with a virtual
IP, or in other words, installed on a "virtual machine"
belonging to some cluster. At any given time the virtual
machine's services and IP address are active on only one
of the cluster's servers. The virtual machine can "fail-
over" from one server to another, which includes stopping
services and deactivating IP address on the first server
and activating the IP address/services on the other
server.
```

```
Currently you have Calypso installed on physical node
angel.company.com.
```

```
Now you have a choice of either adding another package to
the existing installation or configure Calypso on a
virtual machine for use in a cluster.
```

```
1) Add another package to angel.company.com
```

```
2) Install Calypso on a virtual machine
```

```
3) Exit
```

```
Your choice: [2]
```

```
Virtual Machine Host Name
```

```
Please enter the hostname or IP address of the virtual
machine being installed. It can be either short or long;
the only requirement is that it must be resolvable by the
name services configured on this machine
```

```
WARNING: You should follow this path ONLY if this host
participates in a cluster and you really want to install
Calypso on the virtual machine. This is
```

```
NOT how most people will use Calypso.
```

```
The name to be entered will be used by certain Calypso
CommServe to talk to this
```

```
virtual machine. Datapipe Interface Pairs used for the
backup data traffic can be customized later in the Calypso
Java GUI.
```

```
If you got into this screen by mistake, hit ^C and restart
cvpkgadd.
```

```
Virtual Machine Host Name: docm.company.com
```

```
Virtual Machine Client Name
```

```
Please specify the client name for this machine.
```

```
It does not have to be the network host name: you can
enter any word here without spaces. The only requirement
is that it must be unique on the CommServe.
```

```
Virtual Machine Client Name: [docm]
```

```
Install Calypso on virtual machine docm
```

```
Please select the Calypso module(s) that you would like to
install.
```

```
[ ] 1) MediaAgent [1301] [CVGxMA]
```

```
[ ] 2) UNIX File System iDataAgent [1101] [CVGxIDA]
```

```
>) >>>>>>>>>>>> NEXT PAGE >>>>>>>>>>>>>>>
```

```
[a=all n=none r=reverse q=quit d=done >=next <=previous ?
=help]
```

```
Enter number(s)/one of "a,n,r,q,d,>,<,>" here:2
```

```
Install Calypso on virtual machine docm
```

```
Please select the Calypso module(s) that you would like to
install.
```

```
[ ] 1) MediaAgent [1301] [CVGxMA]
```

```
[x ] 2) UNIX File System iDataAgent [1101] [CVGxIDA]
```

```
>) >>>>>>>>>>>> NEXT PAGE >>>>>>>>>>>>>>>
```

```
[a=all n=none r=reverse q=quit d=done >=next <=previous ?
=help]
```

```
Enter number(s)/one of "a,n,r,q,d,>,<,>" here:d
```

- 36. Press **Enter**.
- 37. Specify the path for the **Job Results directory**, and press **Enter**
 If Job Results directory does not exist, it prompts you to create it. Type **Yes** to create it.
- 38. Enter the number associated with the storage policy you want use and press **Enter**.

If you do not have Storage Policy created, this message will be displayed. You may not be prompted for user input.

You can create the Storage Policy as shown in step 41.

- 39. Type **4** to the **Exit** option and press **Enter**.
 The installation is now complete.

- 40. Type **3** to the **Exit** option, and press **Enter**.

```

Do you want to use the agents for restore only without
consuming licenses? [no]

Calypso Job Results Directory Please specify the name for
the JobResults directory.Since you are installing Calypso
on a virtual machine, the JobResults directory must reside
on a shared disk and should have at least 20MB of free
space available. The directory will be used to store
intermediate data that should be passed from one backup
phase to another.

JobResults Directory:

Please select one storage policy for this IDA from the
list below:

1) SP_StandAloneLibrary2_2
2) SP_Library3_3
3) SP_MagLibrary4_4

Storage Policy: [1]

There seem to be no Storage Policies configured on the
CommServe. Before you can run any backups of this IDA, you
will need to install a MediaAgent, create a Storage Policy
and assign it to all subclients..

Adjusting modes and permissions of files

Successfully installed Calypso

Calypso is currently configured on the following
virtual/physical machines.

Now you have an option of either installing certain
Calypso on another virtual machine

or adding a new package to the existing installations.1)
Add a new package to PM angle(angel.mycompany.com)
2) Add a new package to VM docm (docm.mycompany.com)
3) Install Calypso packages on a new virtual machine
4) Exit this menu

Your choice: [1] 4

Install a new Instance?

Calypso now supports the concept of instances, each of
which can be installed to a separate CommServe and be
totally independent of others. Instances are not the same
as the virtual machines on a cluster, in fact, you will be
given a choice to configure one or more virtual machines
later. Contrary to previous releases of Calypso (6.1 and
older), all virtual machines installed on the same host
now share the same set of binaries and the same set of
services.

Instances, on the other hand, have unique set of binaries
and services and one situation where it is useful is when
you want to back up the same host to several CommServes.

You already have one instance configured.

1) Add agents to existing Instance001 going to CS
mycommserve.company.com
2) Create a new instance of Calypso
3) Exit this menu

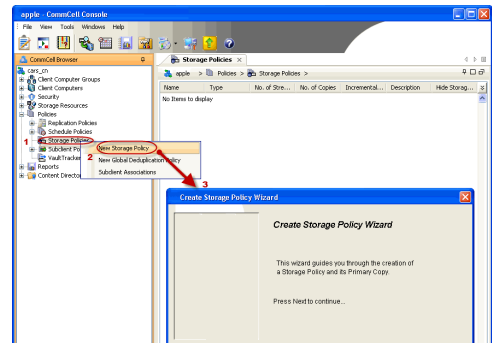
Your choice: 3
    
```



If you already selected a storage policy in step 30, proceed to the Configuration section.

If you do not have Storage Policy created, follow the procedure given below.

- 41.
 1. From the CommCell Browser, navigate to **Policies**.
 2. Right-click the **Storage Policies** and then click **New Storage Policy**.
 3. Follow the prompts displayed in the Storage Policy Wizard. The required options are mentioned below:
 - o Select the Storage Policy type as **Data Protection and Archiving** and click **Next**.
 - o Enter the name in the **Storage Policy Name** box and click **Next**.
 - o From the **Library** list, click the name of a disk library to which the primary copy should be associated and then click **Next**.
 Ensure that you select a library attached to a MediaAgent operating in the current release.



- From the **MediaAgent** list, click the name of a MediaAgent that will be used to create the primary copy and then click **Next**.
- For the device streams and the retention criteria information, click **Next** to accept default values.
- Select **Yes** to enable deduplication for the primary copy.
- From the **MediaAgent** list, click the name of the MediaAgent that will be used to store the Deduplication store.

Type the name of the folder in which the deduplication database must be located in the Deduplication Store Location or click the Browse button to select the folder and then click **Next**.

- Review the details and click **Finish** to create the Storage Policy.



Getting Started - Solaris File System - Deployment on a Veritas Cluster

◀ Previous Next ▶

SKIP THIS PAGE IF YOU ARE NOT INSTALLING THIS AGENT ON A VERITAS CLUSTER.

Click **Next** ▶ to begin Configuration

WHERE TO INSTALL

Install the software on the Solaris computer where you have application data and is part of Veritas Cluster.

Follow the steps given below to install the File System iDataAgent in a Veritas Clustered Environment.

RELATED TOPICS

Download Software Packages

Download the latest software package to perform the install.

System Requirements

Verify that the computer in which you wish to install the software satisfies the System Requirements.

Firewall

Provides comprehensive information on firewall.

INSTALLING THE SOLARIS FILE SYSTEM IDATAAGENT - VERITAS CLUSTERED ENVIRONMENT

1. Logon to the client computer as **root** or as a sudo user.
If you are installing the software using a sudo user account, make sure that sudo user account is configured on this computer. For more information, see FAQ - Install.
2. If you are installing the software from CD, run the following command to mount the CD:

```
mount -r -F hsfs /dev/sr0 /cdrom
```

Run the following command from the Software Installation Package or mount point:

```
./cvpkgadd
```
3. The product banner and other information is displayed.
Press **Enter**.
4. Read the license agreement. Type **y** and press **Enter**.
5. Type **2** and press **Enter**.
6. Type the number associated with the **Veritas Cluster Agents** and press **Enter**.
7. Enter the number corresponding to the binaries that you wish to install.
 - Select 32 bit when installing on a 32-bit computer.
 - When installing on a 64-bit computer, if this is the first package, determine whether you want to install 32-bit binaries or 64 bit

Please select a setup task you want to perform from the list below:

Advance options provide extra setup features such as creating custom package, recording/replaying user selections and installing External Data Connector software.

```
1) Install data protection agents on this computer
2) Advance options
3) Exit this menu
Your choice: [1]
```

Please select a setup task you want to perform from the list below:

```
[Record and Play]
1) Create a recording of user selections (Record Mode)
2) Play a recorded install on this computer
[Custom Package Creator]
3) Create a custom install package
[De-coupled Installer]
4) Pre-install software Components [De-couple Mode]
[Integrated File Archiver]
5) File System iDataAgent with Archiving Enabler
[Customized Cluster Agents]
6) Veritas Cluster Agents
[Third Party Connector]
7) Symantec NetBackup Agent
8) NetApp Snap Manager for Oracle
9) NetApp Snap Manager for SAP/Oracle
[Done]
10) Exit this menu
Your choice: [1] 6
```

This machine supports both 32 bit and 64 bit binaries. By default, we will install 32 bit binary set that has full support for all the modules included in this package. Please note that 64 bit binary set currently only support limited modules.

```
1) All platforms (32 bit)
```

binaries.

You can determine this by verifying whether all the components that you wish to install in this computer are supported in 64-bit in System Requirements.

Note that when the first component is installed using 64-bit binaries, you cannot subsequently install another component using 32-bit. (Or vice-versa.)

8. Type the number corresponding to the VCS service group and press **Enter**.
9. Type **2** and press **Enter**.
10. Type appropriate number to select client host name and press **Enter**.
11. Type the number associated with the **Unix File System iDataAgent** and press **Enter**.
12. A confirmation screen will mark your choice with an "**X**". Type **d** for **Done**, and press **Enter**.
13. Press **Enter**.
14. Type the appropriate number to install the latest software scripts and press **Enter**.
 - Select **Download from the software provider website** to download the latest software scripts. Make sure you have internet access.
 - Select **Use the one in the installation media** to install the software scripts from the package or share from which the installation is currently being performed.
 - Select **Use the copy I already have by entering its unix path**, to specify the path if you have the software script in an alternate location.
15. Press **Enter**.

It is recommended to download the latest Service pack(s). Type **Yes** and press **Enter** to automatically install the available updates during installation.

2) FS and MA only (64 bit)

Your choice: [1] >>> User answer was "1"

Please select one service group from the list below:

1) AIXVCS

2) ClusterService

Service Group: [1]

Please select physical or virtual machine to install:

1) Install Calypso on a physical machine ibmaix21

2) Install Calypso on a virtual machine AIXVCS

3) Exit this menu

Your choice: [1] >>> User answer was "2"

Please select the client hostname or IP address below.

1) aix61cluster.mydomain.mycompany.com

Interface number: [1] >>> User answer was "1".

Install Calypso on physical machine client.company.com

Select the Calypso module that you would like to install

```
[ ] 1) Media Agent          [1301] [CVGxMA]
[ ] 2) UNIX FileSystem iDataAgent [1101] [CVGxIDA]
> >>>> NEXT PAGE >>>>>
```

[a=all n=none r=reverse q=quit d=done >=next <=previous ?=help]

Enter number(s)/one of "a,n,r,q,d,>,<,<?" here: 2

Install Calypso on physical machine client.company.com

Select the Calypso module that you would like to install

```
[ ] 1) Media Agent          [1301] [CVGxMA]
[X] 2) UNIX FileSystem iDataAgent [1101] [CVGxIDA]
> >>>> NEXT PAGE >>>>>
```

[a=all n=none r=reverse q=quit d=done >=next <=previous ?=help]

Enter number(s)/one of "a,n,r,q,d,>,<,<?" here: d

Do you want to use the agents for restore only without consuming licenses? [no]

Installation Scripts Pack provides extra functions and latest support and fix performed during setup time. Please specify how you want to get this pack.

If you choose to download it from the website now, please make sure you have internet connectivity at this time. This process may take some time depending on the internet connectivity.

1) Download from the software provider website.

2) Use the one in the installation media

3) Use the copy I already have by entering its unix path

Your choice: [1] 2

Keep Your Install Up to Date - Latest Service Pack

Latest Service Pack provides extra functions and latest support and fix for the packages you are going to install. You can download the latest service pack from software provider website.

If you decide to download it from the website now, please make sure you have internet connectivity at this time. This process may take some time depending on the internet connectivity.

Do you want to download the latest service pack now? [no]

16. Press **Enter** to accept the default path.
- If you want to specify a different path, type the path and then press **Enter**.
 - If you want to install the software binaries to an NFS shared drive, specify the directory on which you have mounted the NFS file system and then press **Enter**.
- In order to make sure that the client computer has `read/write` access to NFS shared drive, review the steps described in *Installing Software Binaries to an NFS Shared Drive*.
- Do not use the following characters when specifying the path:
- ```
!@#$$%^&*():/?\
```
17. Press **Enter** to accept the default location.
- Enter a path to modify the default location and press **Enter**.
  - All the modules installed on the computer will store the log files in this directory.
18. Type **Yes** and press **Enter**.
19. Type the **Group name** and press **Enter**.  
Press **Enter** again.
20. Press **Enter** to accept the default value for **Number of Streams**.
- You can type the **Number of Streams** that you plan to run at the same time and then press **Enter**.
21. Press **Enter** if you do not want to apply the changes now.
- If you want to apply the changes now, type **Yes** and then press **Enter**.
  - You will come across this prompt when you install the software on the earlier versions of Solaris.
22. Press **Enter**.
- You will see this prompt if you have accepted the default **no** and pressed **Enter** in the above step.
23. Press **Enter**.

Please specify where you want us to install Calypso binaries.

It must be a local directory and there should be at least 176MB of free space available. All files will be installed in a "calypso" subdirectory, so if you enter "/opt", the files will actually be placed into "/opt/calypso".

Installation Directory: [/opt]

Please specify where you want to keep Calypso log files.

It must be a local directory and there should be at least 100MB of free space available. All log files will be created in a "calypso/Log\_Files" subdirectory, so if you enter "/var/log", the logs will actually be placed into "/var/log/calypso/Log\_Files".

Log Directory: [/var/log]

Most of Software processes run with root privileges, but some are launched by databases and inherit database access rights. To make sure that registry and log files can be written to by both kinds of processes we can either make such files world-writeable or we can grant write access only to processes belonging to a particular group, e.g. a "calypso" or a "dba" group.

We highly recommend now that you create a new user group and enter its name in the next setup screen. If you choose not to assign a dedicated group to Software processes, you will need to specify the access permissions later.

If you're planning to backup Oracle DB you should use "dba" group.

Would you like to assign a specific group to Software?  
[yes]

Please enter the name of the group which will be assigned to all Software files and on behalf of which all Software processes will run.

In most of the cases it's a good idea to create a dedicated "calypso" group. However, if you're planning to use Oracle iDataAgent or SAP Agent, you should enter Oracle's "dba" group here.

Group name: skyl

REMINDER

If you are planning to install Calypso Informix, DB2, PostgreSQL, Sybase or Lotus Notes iDataAgent, please make sure to include Informix, DB2, etc. users into group "skyl".

Press <ENTER> to continue ...

Number of Streams

IMPORTANT : Please read install document "Configure Kernel Parameters - Unix/Macintosh" from "Books Online" before you start configuring kernel parameters. Please enter the total number of streams that you plan to run at the same time. We need to make sure that you have enough semaphores and shared memory segments configured in /etc/system.

Number of streams [10]

We now need to modify the /etc/system configuration file on this computer. It is done to make sure that there will be enough shared memory and semaphores available for Calypso programs. Please review the changes below and answer "yes" if you want us to apply them to the /etc/system file. Otherwise, the installation will proceed, the changes will be saved to some other file, and you will have to apply them manually.

```
set shmsys:shminfo_shmmni=8570 (was 7930)
set shmsys:shminfo_shmseg=8420 (was 7780)
set semsys:seminfo_semms=10320 (was 9680)
set semsys:seminfo_semni=8570 (was 7930)
set semsys:seminfo_semmsl=8570(was 7930)
```

Do you want us to apply these changes now? [no]

Changes saved into /etc/system.gal.1744

Press <ENTER> to continue.

Although a 'no' answer can be selected to this question during install, the user should make sure the min



You will see this message if you have accepted the default **no** and pressed **Enter** in step 20.

24. Type a network TCP port number for the Communications Service (CVD) and press **Enter**.

Type a network TCP port number for the Client Event Manager Service (EvMgrC) and press **Enter**.

25. If you do not wish to configure the firewall services, press **Enter**.

If this computer is separated from the CommServe by firewall(s), type **Yes** and then press **Enter**.

For firewall options and configuration instructions, see Firewall Configuration and continue with the installation.

26. Type the fully qualified CommServe host name and press **Enter**.

Ensure that the CommServe is accessible before typing the name; otherwise the installation will fail.

27. Specify the path for the **Job Results directory**, and press **Enter**

If Job Results directory does not exist, it prompts you to create it. Type **Yes** to create it.

28. Type the appropriate number to select the **Client Group** and press **Enter**.

This screen will be displayed only if Client Groups are configured for the CommCell

29. A confirmation screen will mark your choice with an **"X"**.

Type **d** for **Done**, and press **Enter**.

This screen will be displayed only if Client Groups are configured for the CommCell.

30. Enter the number corresponding to the storage policy through which you want to back up the File System iDataAgent and then press **Enter**.

If you do not have Storage Policy created, this message will be displayed.

requirements (below) for shared memory are met, otherwise the backups may fail (the message in logs is 'could not start the pipeline').

```
set shmsys:shminfo_shmmax=4199304
set shmsys:shminfo_shmmin=1
set semsys:shminfo_shmmni=640
set semsys:shminfo_shmseg=640
set semsys:seminfo_semms=640
set semsys:seminfo_semni=640
set semsys:seminfo_semmsl=640
set maxusers=256
Press <ENTER> to continue.
```

Every instance of Calypso should use a unique set of network ports to avoid interfering with other instances running on the same machine.

The port numbers selected must be from the reserved port number range and have not been registered by another application on this machine.

Please enter the port numbers.

Port Number for CVD : [8400]

Port Number for EvMgrC: [8402]

Is there a firewall between this client and the CommServe? [no]

Please specify hostname of the CommServe below. Make sure the hostname is fully qualified, resolvable by the name services configured on this machine.

CommServe Host Name: mycommserve.company.com

Please specify the name for the JobResults directory.

Since you are installing Calypso on a virtual machine, the JobResults directory must reside on a shared disk and should have at least 20MB of free space available. The directory will be used to store intermediate data that should be passed from one backup phase to another.

JobResults Directory:

Commcell Level Global Filters are set through Calypso GUI's Control Panel in order to filter out certain directories or files from backup Commcell-widely. If you turn on the Global filters, they will be effective to the default subclient. There are three options you can choose to set the filters.

- 1) Use Cell level policy
- 2) Always use Global filters
- 3) Do not use Global filters

Please select how to set the Global Filters for the default subclient? [1]

Client Group(s) is currently configured on CommServe cs.company.com. Please choose the group(s) that you want to add this client client.company.com to. The selected group(s) will be marked (X) and can be deselected if you enter the same number again. After you are finished with the selection, select "Done with the Selection".

- [ ] 1) Unix
- [ ] 2) DR
- [ ] 3) DKS

[a=all n=none r=reverse q=quit d=done >=next <=previous ? =help]

Enter number(s)/one of "a,n,r,q,d,>,<," here: 2

Please select one storage policy for this IDA from the list below:

- 1) SP\_StandAloneLibrary2\_2
- 2) SP\_Library3\_3
- 3) SP\_MagLibrary4\_4
- 4) fornax\_fornax\_HWCmp
- 5) ranger\_ranger\_HWCmp
- 6) fornax\_fornax\_ClnCmp
- 7) fornax\_fornax\_MACmp
- 8) fornax\_fornax\_NoCmp

Storage Policy: [1]

There seem to be no Storage Policies configured on the

You may not be prompted for user input.

You can create the Storage Policy later in step 32.

31. Type **3** to the **Exit** option and press **Enter**.  
The installation is now complete.

CommServe. Before you can run any backups of this IDA, you will need to install a MediaAgent, create a Storage Policy and assign it to all subclients..

Adjusting modes and permissions of files

Successfully installed Calypso

Certain Calypso packages can be associated with a virtual IP, or in other words, installed on a "virtual machine" belonging to some cluster. At any given time the virtual machine's services and IP address are active on only one of the cluster's servers. The virtual machine can "fail-over" from one server to another, which includes stopping services and deactivating IP address on the first server and activating the IP address/services on the other server.

Currently you have Calypso installed on physical node client.company.com.

Now you have a choice of either adding another package to the existing installation or configure Calypso on a virtual machine for use in a cluster.

- 1) Add another package to client.company.com
- 2) Install Calypso on a virtual machine
- 3) Exit

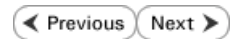
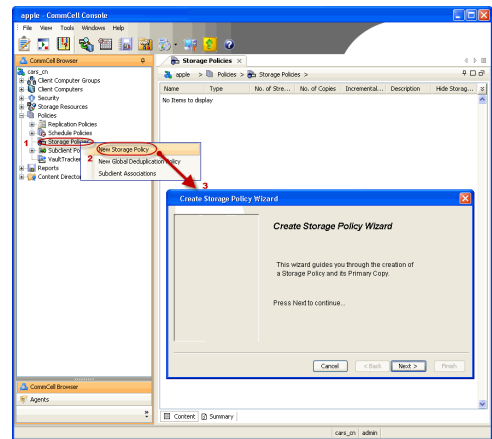
Your choice: [1]



If you already have a storage policy selected in step 30, you can proceed to the Configuration section.

If you do not have Storage Policy created, follow the procedure given below.

- 32.
1. From the CommCell Browser, navigate to **Policies**.
  2. Right-click the **Storage Policies** and then click **New Storage Policy**.
  3. Follow the prompts displayed in the Storage Policy Wizard. The required options are mentioned below:
    - Select the Storage Policy type as **Data Protection and Archiving** and click **Next**.
    - Enter the name in the **Storage Policy Name** box and click **Next**.
    - From the **Library** list, click the name of a disk library to which the primary copy should be associated and then click **Next**.  
Ensure that you select a library attached to a MediaAgent operating in the current release.
    - From the **MediaAgent** list, click the name of a MediaAgent that will be used to create the primary copy and then click **Next**.
    - For the device streams and the retention criteria information, click **Next** to accept default values.
    - Select **Yes** to enable deduplication for the primary copy.
    - From the **MediaAgent** list, click the name of the MediaAgent that will be used to store the Deduplication store.  
Type the name of the folder in which the deduplication database must be located in the Deduplication Store Location or click the Browse button to select the folder and then click **Next**.
    - Review the details and click **Finish** to create the Storage Policy.



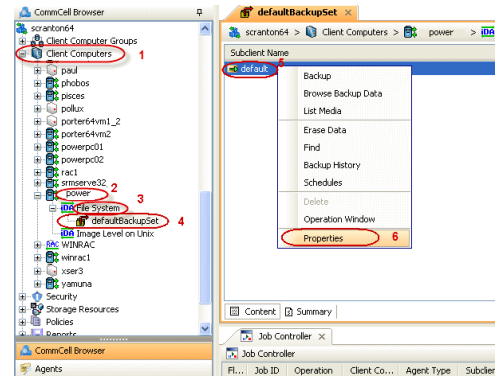
# Getting Started - Solaris File System Configuration

◀ Previous Next ▶

## CONFIGURATION

Once installed, follow the steps given below to assign a storage policy with the default subclient.

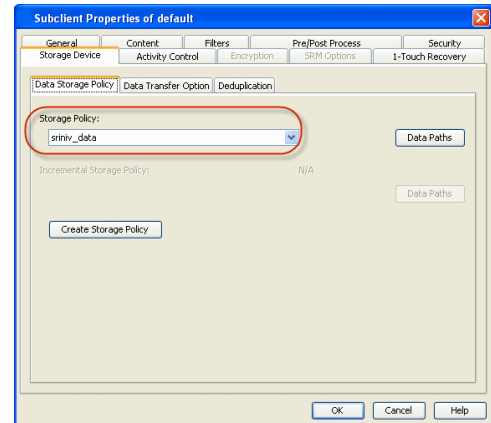
- From the CommCell Browser, navigate to **Client Computers** | **<Client>** | **File System** | **defaultBackupSet**.
  - Right-click the default subclient and then click **Properties**.



- Click the **Storage Device** tab.
  - In the **Storage Policy** box, select a Storage Policy name.
  - Click **OK**.

Click **Next** ▶ to continue.

If you do not have Storage Policy created, follow the step given below to create a storage policy.



- Click **Create Storage Policy**.
  - Follow the prompts displayed in the Storage Policy Wizard. The required options are mentioned below:

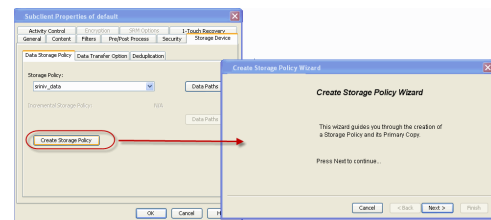
- Select the Storage Policy type as **Data Protection and Archiving** and click **Next**.
- Enter the name in the **Storage Policy Name** box and click **Next**.
- From the **Library** list, click the name of a disk library to which the primary copy should be associated and then click **Next**.

Ensure that you select a library attached to a MediaAgent operating in the current release.

- From the **MediaAgent** list, click the name of a MediaAgent that will be used to create the primary copy and then click **Next**.
- For the device streams and the retention criteria information, click **Next** to accept default values.
- Select **Yes** to enable deduplication for the primary copy.
- From the **MediaAgent** list, click the name of the MediaAgent that will be used to store the Deduplication store.

Type the name of the folder in which the deduplication database must be located in the Deduplication Store Location or click the Browse button to select the folder and then click **Next**.

- Review the details and click **Finish** to create the Storage Policy.



◀ Previous Next ▶

# Getting Started - Solaris File System Backup

◀ Previous    Next ▶

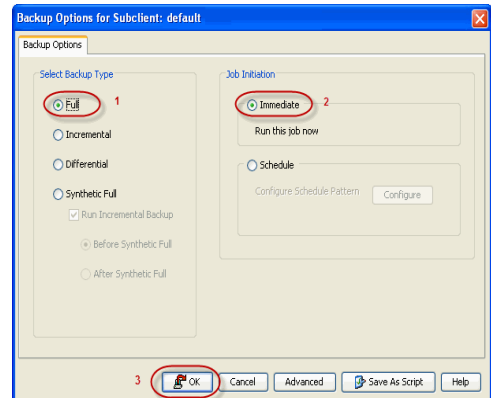
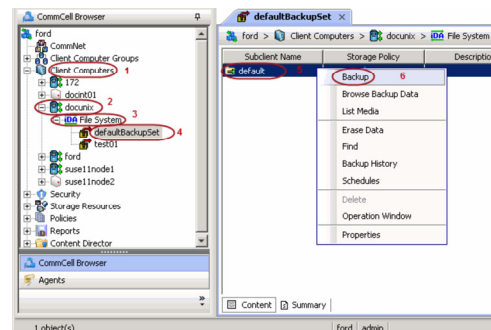
| WHAT GETS BACKED UP                                                                                                                                                                                                                                                                                                                                                                                                                                                                                                                                                                              | WHAT DOES NOT GET BACKED UP                                                                                                                                                                                                                                        |
|--------------------------------------------------------------------------------------------------------------------------------------------------------------------------------------------------------------------------------------------------------------------------------------------------------------------------------------------------------------------------------------------------------------------------------------------------------------------------------------------------------------------------------------------------------------------------------------------------|--------------------------------------------------------------------------------------------------------------------------------------------------------------------------------------------------------------------------------------------------------------------|
| <p><b>FILE SYSTEMS</b></p> <p>Unix File System (UFS)<br/>           VERITAS File System (VxFS)<br/>           VERITAS Cluster File System (VxCFS)<br/>           Zettabyte File System (ZFS)<br/>           Extended attributes in the VxFS, UFS, and ZFS file systems</p> <p>In a zone environment, Loopback File System (LOFS) is backed up by default. If you do not want to backup LOFS file system, you can exclude it by Configuring Filters For Backups.</p> <p><b>VOLUME MANAGERS</b></p> <p>Veritas Volume Manager (VxVM) 5.0 or higher<br/>           Solaris Volume Manager (SVM)</p> | <p>By default, the following file systems are automatically skipped during backups:</p> <ul style="list-style-type: none"> <li>• nfs</li> <li>• hsfs</li> <li>• autofs</li> <li>• mvfs</li> <li>• lofs</li> <li>• tmpfs</li> <li>• proc</li> <li>• cdfs</li> </ul> |
| <p><b>FILE SYSTEM ELEMENTS</b></p> <p>Files with holes<br/>           Files with Advisory Locks<br/>           Raw device files<br/>           Symbolic links that are browsed or manually added to the data contents<br/>           Files with names containing non-ASCII characters as long as the appropriate locales are set<br/>           Shares with Macintosh File System data</p>                                                                                                                                                                                                       | <p>Files with mandatory locks - these files are not backed up by default. See Configuring Backups For Locked Files to backup files with mandatory locks.</p> <p>Files for which the file path or file name contains more than 1024 characters</p>                  |

## PERFORM A BACKUP

Once the storage policy is configured, you are ready to perform your first backup.

The following section provides step-by-step instructions for performing your first backup:

1.
  - From the CommCell Browser, navigate to **Client Computers | <Client> | File System | defaultBackupSet**.
  - Right-click the default subclient and click **Backup**.
  
2.
  - Click **Full** as backup type and then click **Immediate**.
  - Click **OK**.



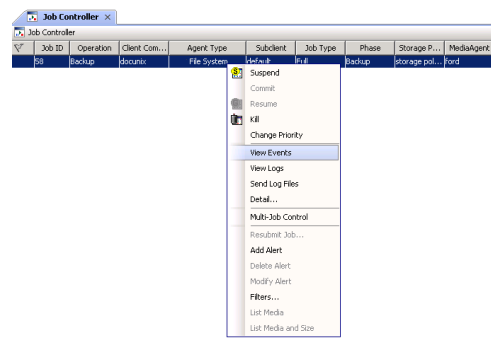
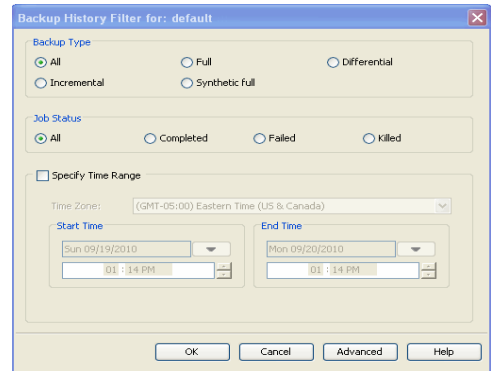
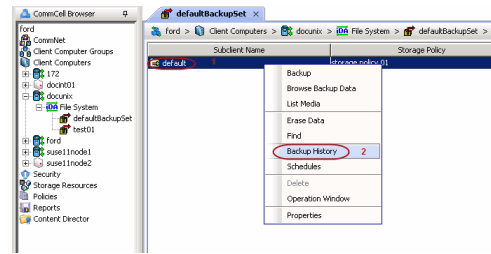
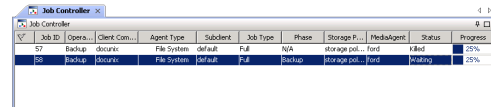
3. You can track the progress of the job from the **Job Controller** window of the CommCell console.

4. Once the job is complete, view the job details from the **Backup History**. Right-click the **Subclient** and select **Backup History**.

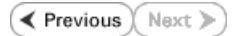
5. Click **OK**.

6. You can view the following details about the job by right-clicking the job:

- Items that failed during the job
- Items that succeeded during the job
- Details of the job
- Events of the job
- Log files of the job
- Media associated with the job



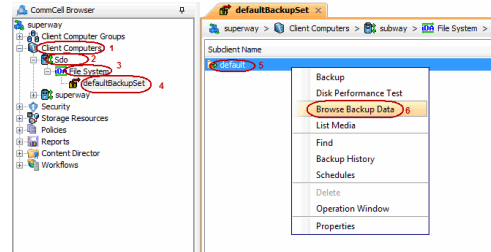
# Getting Started - Solaris File System Restore



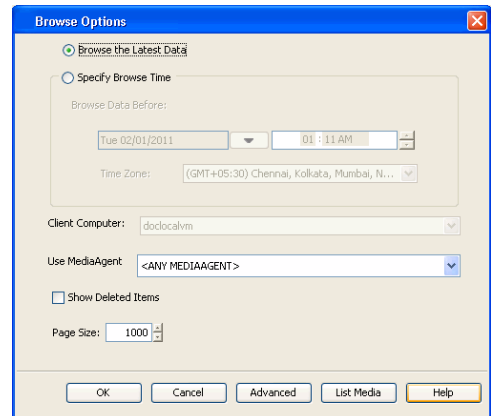
## PERFORM A RESTORE

It is recommended that you perform a restore operation immediately after your first full backup to understand the process. The following section explains how to restore the **etc** folder to a new location.

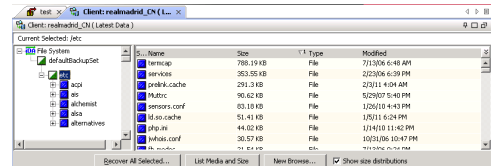
- From the CommCell Browser, navigate to **Client Computers** | **<Client>** | **File System** | **defaultBackupSet**
  - Right-click the default subclient and then click **Browse Backup Data**.



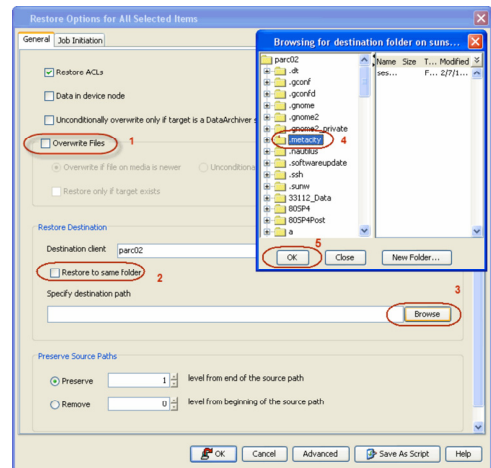
- Click **OK**.



- Expand the **defaultBackupSet** and navigate to **etc** folder.
  - Select the **etc** folder.
  - Click **Recover All Selected**.



- Clear the **Overwrite Files** and **Restore to same folder** options.
  - Specify the destination path by clicking **Browse** button. This will ensure that the existing files are not overwritten.
  - Click **OK**.



- Click the **Job Initiation** tab.
  - Select **Immediate** to run the job immediately.
  - Click **OK**.

6. You can monitor the progress of the restore job in the **Job Controller** window of the CommCell Console.

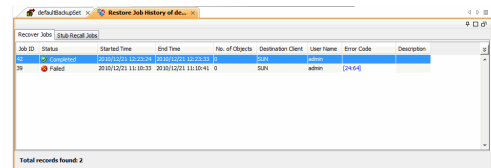
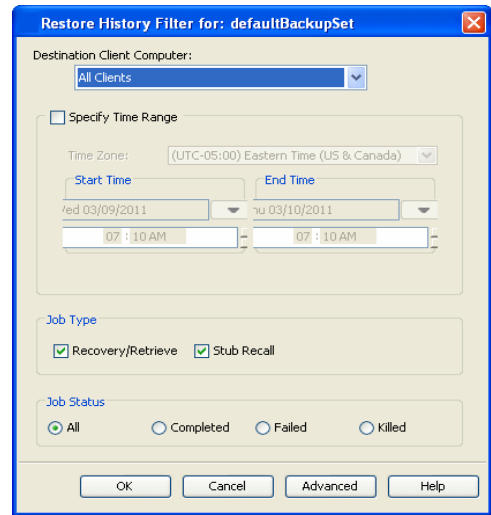
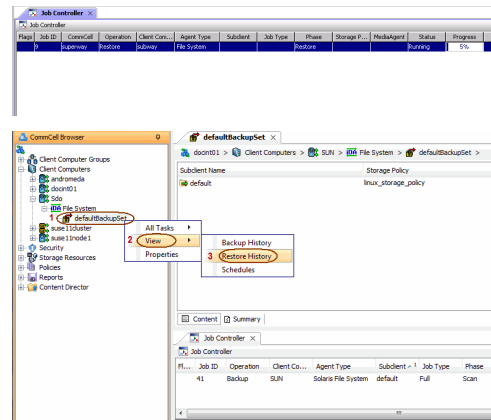
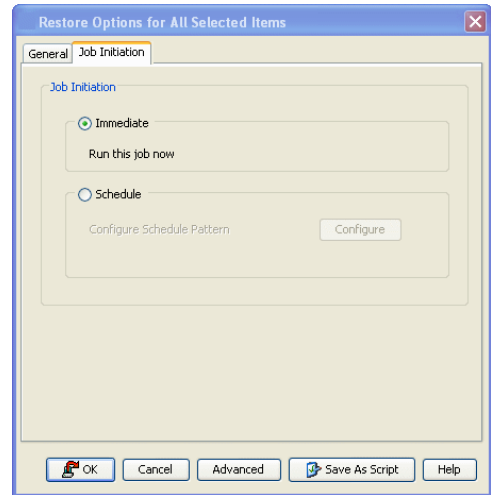
7. Once the restore job has completed, right-click the **defaultBackupSet**, point to **View** and then click **Restore History**.

8. Click **OK**.

9. You can view the following details about the job by right-clicking the job:

- View Restore Items  
You can view them as **Successful**, **Failed**, **Skipped** or **All**.
- View Job Details
- View Events of the restore job.
- View Log files of the restore job

10. Once the File System is restored, verify that the restored files/folders are available in the restore destination provided during step 4.



```
[parc02] # ls /.metacity
etc
```

**CONGRATULATIONS - YOU HAVE SUCCESSFULLY COMPLETED YOUR FIRST BACKUP AND RESTORE.**

If you want to further explore this Agent's features read the **Advanced** sections of this documentation.

