

Features - SRM NAS Agent

TABLE OF CONTENTS

OVERVIEW

SYSTEM REQUIREMENTS - SRM NAS AGENT

INSTALLATION

Install the SRM NAS Agent

CONFIGURATION

- SRM Data Collection

SRM NAS AGENT SUMMARIES

SRM NAS REPORTS

MANAGEMENT

- Admin Job History
 - Data Collection Job History
-

Overview - SRM NAS Agent

Topics | Related Topics

- Introduction
 - Supported Job Types for Data Collection
 - Discovery Job
 - Discovery and Analysis Job
 - Tree Level in SRM NAS Agent
 - Configuration Considerations
 - License Requirement
-

INTRODUCTION

The SRM NAS Agent gathers statistics on the network interfaces, system infrastructure, disk and file system assets (CIFS and NFS shares) of the NAS File Server (both NetApp and EMC Celerra are supported).

Data collected by the SRM NAS Agent is summarized by many types of reports that may be further customized with user-selected filters and charts in the Report Manager.

For the SRM NAS Agent, the agent software is installed in a proxy client. For more information on installing the proxy client, see [Deployment - SRM NAS Agent](#). Once the installation is complete, the agent and the NAS file server information must be configured from the client level in the CommCell Console. For step-by-step instructions see, [Add NAS Filer](#).

SUPPORTED JOB TYPES FOR DATA COLLECTION

This agent supports two **job types** for data collection:

- Discovery
- Discovery and Analysis

DISCOVERY JOB

This job collects basic information about network interfaces, system infrastructure, disks, file system and share details, CIFS and NFS performance statistics, quotas, NetApp qtrees and snapshots, EMC quota trees, quota configurations and checkpoints for the file server. Data collections using the Discovery level job require minimal processing on the proxy Agent computer and may be run throughout the day. If you select a Discovery level Data Collection Job, you will not receive meaningful data in certain of the more extensive reports.

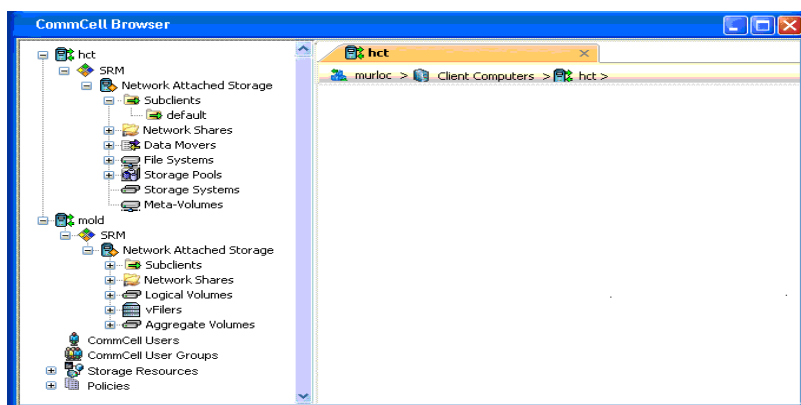
DISCOVERY AND ANALYSIS JOB

This job collects detailed file-level statistics including information about file sizes, types, owners, extensions and create access and modification times. Data collections using the Analysis level job should be run during off-peak hours because they require processing that is CPU- and disk-intensive on the proxy Agent computer.

See [Reports - SRM NAS Agent](#) for more information about which reports require Analysis level data collection.

TREE LEVEL IN SRM NAS AGENT

When the SRM NAS Agent is installed, the following levels are automatically created in the CommCell Browser.



hct: Client

NAS: Agent

default: Subclients

Network Shares: This level displays Network Shares information for the SRM NAS Agent's client computer. Logical Storage Volumes associated with the client computer are populated under this level after completion of the first Data Collection operation. For more information, see SRM NAS Agent Summaries.

Data Movers: This level displays Data Movers information for Celerra File Servers. Data Movers are populated under this level after completion of the first Data Collection operation. For more information, see SRM NAS Agent Summaries.

File Systems: This level displays File Systems information for Celerra File Servers. File Systems are populated under this level after completion of the first Data Collection operation. For more information, see SRM NAS Agent Summaries.

Storage Pools: This level displays Storage Pools information for Celerra File Servers. Storage Pools are populated under this level after completion of the first Data Collection operation. For more information, see SRM NAS Agent Summaries.

Storage Systems: This level displays Storage Systems information for Celerra File Servers. Storage Systems populated under this level after completion of the first Data Collection operation. For more information, see SRM NAS Agent Summaries.

Meta-Volumes: This level displays Meta-Volumes information for Celerra File Servers. Meta-Volumes are populated under this level after completion of the first Data Collection operation. For more information, see SRM NAS Agent Summaries.

Logical Volumes: This level displays Logical Volumes information for NetApp File Servers. Logical Volumes are populated under this level after completion of the first Data Collection operation. For more information, see SRM NAS Agent Summaries.

vFilers: This level displays vFilers information for NetApp File Server. vFilers are populated under this level after completion of the first Data Collection operation. For more information, see SRM NAS Agent Summaries.

Aggregate Volumes: This level displays Aggregate Volumes information for NetApp File Server. Aggregate Volumes are populated under this level after completion of the first Data Collection operation. For more information, see SRM NAS Agent Summaries.

CONFIGURATION CONSIDERATION

Consider the following configuration requirements prior to using the SRM NAS Agent:

- The SRM NAS Agent functions as a proxy Agent and must be installed on a separate computer running one of the proxy Agent operating systems listed in System Requirements - SRM NAS Agent.
- The SRM NAS Agent, a proxy agent, cannot communicate with the NAS File Server across a firewall, so the agent and the NAS device must be on the same side of the firewall.
- In order to successfully start a migration archiving job, the NAS Filer name used in the SRM NAS Agent and in the subclient content path in the File Archiver Agent should exactly be the same (case-insensitive) or resolve to the same IP address.
- Make sure that the subclient content path in the File Archiver Agent is not excluded from data collection.

LICENSE REQUIREMENT

To perform a data collection operation using this Agent, you need a SRM NAS Agent license, available in the SRM server. The license is consumed when this component is configured on the client computer. See License Administration for more details on license requirements.

[Back to Top](#)

System Requirements - SRM NAS Agent

[System Requirements](#) | [Supported Features](#)

The SRM NAS Agent software is installed on a computer (Proxy Agent) that can access the file server from which you wish to perform data collection. The following requirements are for the SRM NAS Agent for Network Attached Storage.

OPERATING SYSTEM

WINDOWS SERVER 2008

Microsoft Windows Server 2008 32-bit and x64 Editions*

*Core Editions not supported

WINDOWS SERVER 2003

Microsoft Windows Server 2003 32-bit and x64 Editions with a minimum of Service Pack 1

HARD DRIVE

1 GB of minimum disk space is required for installing the software.

256 MB of free disk space is required for job result directory.

256 MB of free disk space is required for log directory.

MEMORY

32 MB RAM minimum required beyond the requirements of the operating system and running applications

PROCESSOR

All Windows-compatible processors supported

FILE SERVER

Data can be collected from file servers with the following Operating Systems:

NetApp ONTAP versions 6.5.7 through 8.2

Celerra DART versions 5.5 through 7.0

PERIPHERALS

DVD-ROM drive

Network Interface Card

MISCELLANEOUS

NETWORK

TCP/IP Services configured on the computer.

Network connectivity between the proxy Agent and the NAS file servers that are configured as clients.

.NET FRAMEWORK

.NET Framework 2.0 is automatically installed. Note that .NET Framework 2.0 can co-exist with other versions of this software.

MICROSOFT VISUAL C++

Microsoft Visual C++ 2008 Redistributable Package is automatically installed. Note that Visual C++ 2008 Redistributable Package can co-exist with other versions of this software.

DISCLAIMER

Minor revisions and/or service packs that are released by application and operating system vendors are supported by our software but may not be individually listed in our System Requirements. We will provide information on any known caveat for the revisions and/or service packs. In some cases, these revisions and/or service packs affect the working of our software. Changes to the behavior of our software resulting from an application or operating system revision/service pack may be beyond our control. The older releases of our software may not support the platforms supported in the current release. However, we will make every effort to correct the behavior in the current or future releases when necessary. Please contact your Software Provider for any problem with a specific application or operating system.

Additional considerations regarding minimum requirements and End of Life policies from application and operating system vendors are also applicable

Install the SRM NAS Agent

TABLE OF CONTENTS

Install Requirements

Before You Begin

Install Procedure

- Getting Started
- Select Components for Installation
- Configuration of Other Installation Options
- Client Group Selection
- Schedule Automatic Update
- Verify Summary of Install Options
- Setup Complete

Post-Install Considerations

INSTALL REQUIREMENTS

The SRM NAS Agent is installed on the computer from which the Agent collects data for reporting purposes. (This computer is referred to as the *Client* computer in this install procedure.)

Verify that the computer in which you wish to install the software satisfies the minimum requirements specified in System Requirements - SRM NAS Agent.

The following procedure describes the steps involved in installing the SRM NAS Agent. If you choose to install additional components simultaneously, refer to the appropriate procedures for installation requirements and steps specific to the component. Note that when you install multiple components, the sequence of the install steps may vary.

Review the following Install Requirements before installing the software:

GENERAL

- Agents should be installed only after the CommServe and SRM Server has been installed in the CommCell. Also, keep in mind that the CommServe and SRM Server must be installed and running (on the same computer), before you can install the Agent.
- Close all applications and disable any programs that run automatically, including anti-virus, screen savers and operating system utilities. Some of the programs, including many anti-virus programs, may be running as a service. Stop and disable such services before you begin. You can re-enable them after the installation.
- Ensure there is an available license on the CommServe for the Agent.
- Verify that you have the software installation disc that is appropriate to the destination computer's operating system.

Make sure that you have the latest software installation disc before you start to install the software. If you are not sure, contact your software provider.

BEFORE YOU BEGIN

- Log on to the client as local Administrator or as a member of the Administrators group on that computer.

INSTALL PROCEDURE

GETTING STARTED

1. Place the Software Installation Disc for the Windows platform into the disc drive.

After a few seconds, the installation program is launched.

If the installation program does not launch automatically:

- Click the **Start** button on the Windows task bar, and then click **Run**.
- Browse to the installation disc drive, select **Setup.exe**, click **Open**, then click **OK**.

NOTES

- If you are installing on Windows Server Core editions, mount to Software Installation Disc through command line, go to the **AMD64** folder and run **Setup.exe**.
2. Choose the language you want to use during installation. Click the down arrow and select the desired language from the drop-down list, and click **Next** to continue.

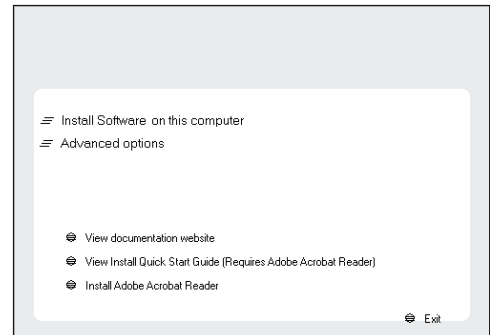
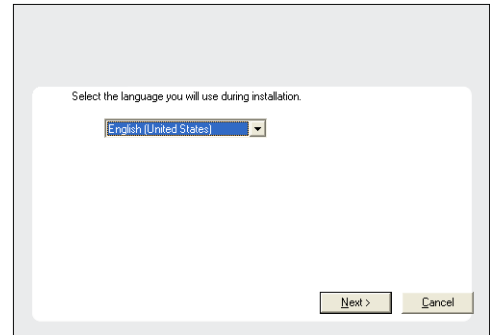
3. Select the option to install software on this computer.

NOTES

- The options that appear on this screen depend on the computer in which the software is being installed.

4. Read the license agreement, then select **I accept the terms in the license agreement**.

Click **Next** to continue.



SELECT COMPONENTS FOR INSTALLATION

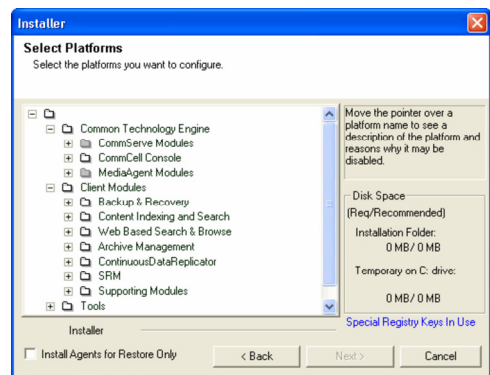
5. Select the component(s) to install.

NOTES

- Your screen may look different from the example shown.
- Components that either have already been installed, or which cannot be installed, will be dimmed. Hover over the component for additional details.
- If you wish to install the agent software for restore only, select **Install Agents for Restore Only** checkbox. See Installing Restore Only Agents for more information.
- The **Special Registry Keys In Use** field will be highlighted when `GalaxyInstallerFlags` registry key is enabled. Move the mouse pointer over this field to see a list of registry keys that have been created in this computer.

Click **Next** to continue.

To install the SRM NAS File System Agent, expand the `SRM` folder and then select `SRM NAS Agent`.



CONFIGURATION OF OTHER INSTALLATION OPTIONS

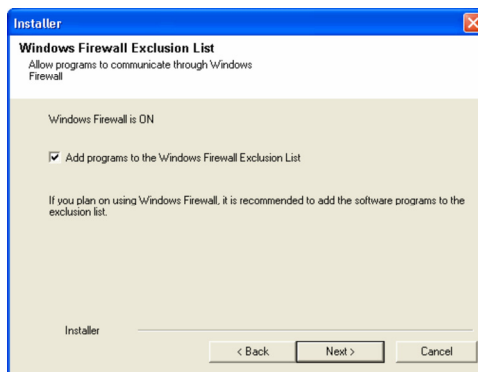
6. If this computer and the CommServe is separated by a firewall, select the **Configure firewall services** option and then click **Next** to continue.

For firewall options and configuration instructions, see Firewall Configuration and continue with the installation.

If firewall configuration is not required, click **Next** to continue.

You can either select this option during install or add the programs and services after installation. For adding the programs and services after installation, see Configure Windows Firewall to Allow CommCell Communication.

Click **Next** to continue.



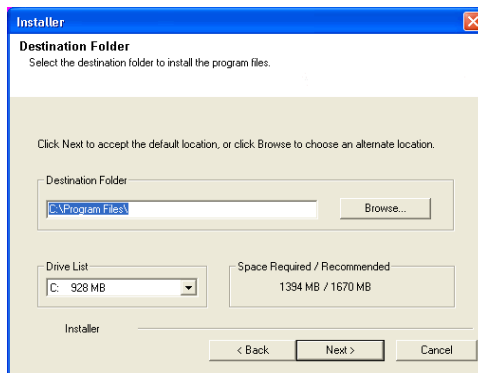
- Specify the location where you want to install the software.

NOTES

- Do not install the software to a mapped network drive.
- Do not use the following characters when specifying the destination path:
/ : * ? " < > | #
It is recommended that you use alphanumeric characters only.
- If you intend to install other components on this computer, the selected installation directory will be automatically used for that software as well.
- If a component is already installed in this computer, this screen may not be displayed. The software will be automatically installed in the same location that was previously specified.

Click **Browse** to change directories.

Click **Next** to continue.



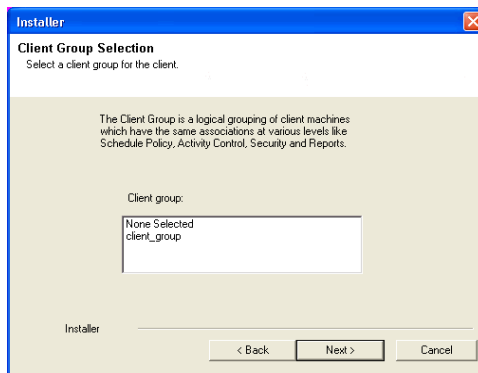
CLIENT GROUP SELECTION

- Select a Client Group from the list.

Click **Next** to continue.

NOTES

- This screen will be displayed if Client Groups are configured in the CommCell Console. For more information, see Client Computer Groups.



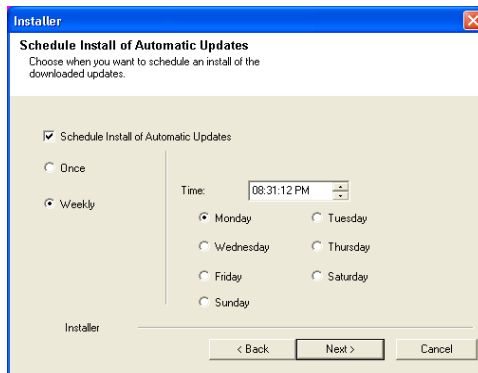
SCHEDULE AUTOMATIC UPDATE

- If necessary, select this option to schedule an automatic installation of software updates.

NOTES

- Schedule Install of Automatic Updates allows automatic installation of the necessary software updates on the computer on a single or weekly basis. If you do not select this option, you can schedule these updates later from the CommCell Console.
- To avoid conflict, do not schedule the automatic installation of software updates to occur at the same time as the automatic FTP downloading of software updates.
- If a component has already been installed, this screen will not be displayed; instead, the installer will use the same option as previously specified.

Click **Next** to continue.



VERIFY SUMMARY OF INSTALL OPTIONS

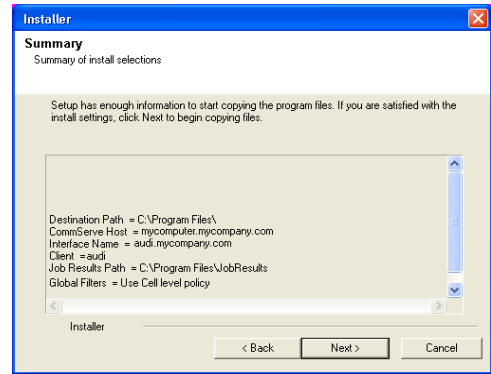
14. Verify the summary of selected options.

NOTES

- The **Summary** on your screen should reflect the components you selected for install, and may look different from the example shown.

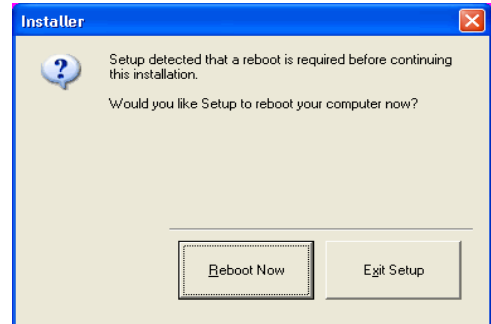
Click **Next** to continue or **Back** to change any of the options.

The install program now starts copying the software to the computer. This step may take several minutes to complete.



15. The System Reboot message may be displayed. If so, select one of the following:

- **Reboot Now**
If this option is displayed without the **Skip Reboot** option, the install program has found files required by the software that are in use and need to be replaced. If **Reboot Now** is displayed without the **Skip Reboot** option, reboot the computer at this point. The install program will automatically continue after the reboot.
- **Exit Setup**
If you want to exit the install program, click **Exit Setup**.

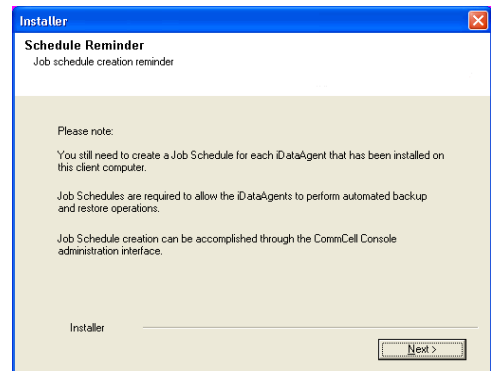


SETUP COMPLETE

16. Click **Next** to continue.

NOTES

- Schedules help ensure that the data protection operations for the Agent are automatically performed on a regular basis without user intervention. For more information, see Scheduling.



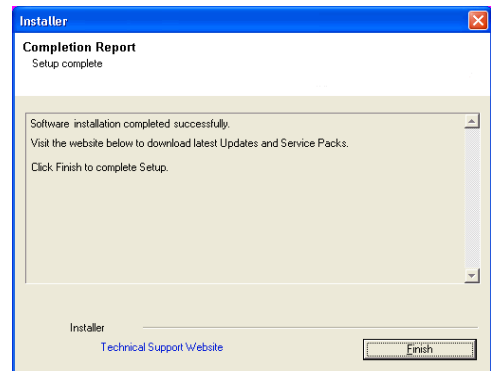
17. Setup displays the successfully installed components.

NOTES

- The **Setup Complete** message displayed on your screen will reflect the components you installed, and may look different from the example shown.
- If you install an Agent with the CommCell Console open, you need to refresh the CommCell Console (F5) to see the new Agents.
- If **Reboot Now** button is displayed make sure to reboot the computer before performing any other operations from the computer.

Click **Finish** to close the install program.

The installation is now complete.



POST-INSTALL CONSIDERATIONS

GENERAL

- Review Install Considerations after installing the software.
- Install post-release updates or Service Packs that may have been released after the release of the software. When you are installing a Service Pack,

ensure that it is the same version as the one installed in the CommServe Server. Alternatively, you can enable Automatic Updates for quick and easy installation of updates in the CommCell component.

SRM Data Collection

[Topics](#) | [How To](#) | [Troubleshoot](#) | [Related Topics](#)

Overview

Scheduling Data Collection jobs

Considerations

Best Practices

- Solaris
 - NAS
 - Enabling Reverse Lookup
 - SharePoint
 - Oracle
-

OVERVIEW

After installing the SRM Server, the SRM Agent software must be installed on your selected client computers before you can collect data from them. When data collection is performed, this information populates the SQL database on the SRM Server's repository with current statistics, for the purpose of generating summaries and reports.

When you configure data collection for a client, from the SRM node you have the options of choosing which Agent(s) to use (if more than one is available on the client), the type of data collection to be performed (determined by selecting either an Analysis or Discovery Job Type), a Schedule Policy, and a start date. You can exclude volumes and directories from the data collection process for Subclients filters. You can also balance the collection load across different subclients, each with a different schedule policy.

Data collection jobs run automatically according to the parameters you have selected, and will appear in the Job Controller as a scheduled job. The system can also be configured to generate advisories, a brief text message describing an actual or potential problem and the suggested corrective action.

Reports and SRM Summaries viewed through the console are generated from the data collected and stored on the SRM Server. Schedule your first reports to run after your first data collection jobs have completed. Note that data collection and Report Generation jobs are scheduled independently, at different times and intervals. Thus, you can, for example, collect data nightly, hourly, or on-demand, but generate reports only once per week if desired.

SCHEDULING DATA COLLECTION JOBS

Data Collection jobs can be scheduled to regularly collect data at specified intervals. Data Collection jobs can be scheduled from the SRM agent level in the CommCell Browser. In addition, Analysis Data Collection jobs can be scheduled for the individual subclients at the subclient level. When the Data Collection job is scheduled the job will be displayed in the Job Controller. After the successful completion of the Data Collection job, the client information is gathered at the SRM Server and the job status is shown as completed in the Job Controller. For more information on scheduling, see Scheduling. For step-by-step instructions on scheduling a Data Collection job see Run/Schedule Data Collection.

CONSIDERATIONS

- Data Collection is not performed for mounted network drives, volumes, or directories. If you want to collect data for network file systems, install the appropriate SRM Agent on the local computer for those file systems.
- SRM Exchange Agent based Analysis Data Collection job will report storage groups only if the storage groups are mounted.
- For NAS Data Collection, all CIFS and NFS content will be included as content in the default subclient, unless some or all of it is specifically listed as content in a user-defined subclient.
- For NAS Data Collection, if subclient SubB is child of subclient SubA meaning that SubB's paths are contained in paths of SubA, then when collecting SubA none of the contained paths of SubB will be collected. Instead they will be collected by Data Collection of SubB.
- For NAS, data collection jobs are not supported for vfilers. If you enable data collection on a vfiler, then the data is not collected.
- For UNIX file systems, all mount points (comprised of a logical volume or partition) will be included as content in the default subclient, unless they are specifically listed as content in a user-defined subclient.
Consider this example:
 - You have created a subclient named `sub1`.
 - You have defined a directory named `/mount_points` as contents for `sub1`.
 - Within `/mount_points` there are three mount points, `mnt1`, `mnt2`, and `mnt3`.

- Data will not be collected on those three mount points as part of `sub1`; instead, they are part of the content of the default subclient.
- To collect data on those mount points as part of `sub1`, you must specify each mount point, `/mount_points/mnt1`, `/mount_points/mnt2`, and `/mount_points/mnt3`, as content for `sub1`.
- If you would like to configure the SRM Exchange Agent for cross-domain mailbox access for data collection purposes, this can be accomplished by creating the `AdServerList` key in the registry.
- After adding, editing or removing a subclient, you must run an Analysis data collection job on all subclients associated with an agent for reports to reflect the changes.
- For the SRM Agent for SharePoint only - ensure that all necessary SharePoint services are running and that the configuration and content databases are online; otherwise, installation may appear successful, but a subsequent Data Collection will fail.
- For SRM Windows File System Agent, Summary pages may show different file count than the actual count as the Agent will skip junction points.
- Using the integrated File System Agent, if DDR or Snap Protect is selected as the backup method, SRM Data Collection will be skipped.
- For SRM Exchange Agents running with Exchange 2010, public folder object data is not collected when a Discovery and Analysis type data collection job is run.

BEST PRACTICES

SOLARIS

Ensure that the NFS client specifies the soft option when mounting NFS shares, or else data collection for NFS data will hang whenever the NFS server is down or not accessible. Also, increase the value for the `retrans` and `timeo` options; this will compensate for the soft option limiting the number of retries that the client can attempt to access the NFS server.

NAS

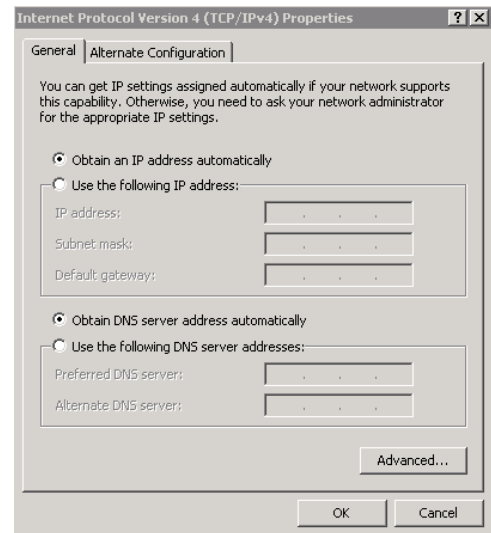
Configure NAS filer (including NetApp vFiler, EMC Celerra CIFS Servers and Data Movers) with DNS server in a way that reverse DNS lookup (from NAS filer to SRM NAS proxy) is resolved. If that is not the case then CIFS connection or NFS mount from SRM NAS proxy to NAS filer will fail.

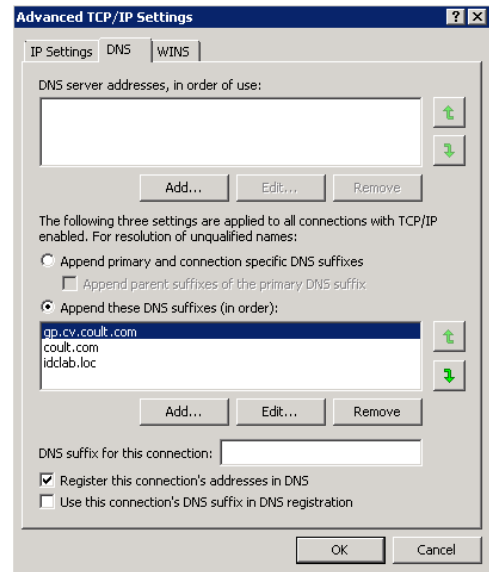
ENABLING REVERSE LOOKUP

Use the following steps to enable Reverse DNS lookup on a client computer:

1.
 - Logon to the computer as an Administrator.
 - Click **Start**, click **Control Panel** and then select **Network and Internet**.
 - Click **Network and Sharing Center**.
 - Under **Tasks**, Select **Manage network connections**.
 - Right-click the **Local Area Connection** icon, and then click **Properties**.
 - On the **Local Area Connection Properties** dialog box, select **Internet Protocol Version 4 (TCP/IPv4)**, and then click **Properties**.
 - If you have a DHCP Server in your network environment, then select **Obtain DNS server address automatically**. Else, select **Use the following DNS server addresses** and follow the below steps:
 - In the **Preferred DNS server** box, type the IP Address of the DNS server.
 - In the **Alternate DNS server** box, type the IP Address of the alternate DNS server.

2.
 - Click **Advanced**.
 - On the **Advanced TCP/IP Settings** dialog box, click the **DNS** tab.
 - Click **Append these DNS suffixes (in order)**.
 - Click **Add**, in the **Domain suffix** box, type the Domain suffix, and then click **Add**. Repeat this step to add all the DNS suffixes in order.
 - Click **OK**, and then click **OK**.
 - Click **OK**.





In case the DNS is not configured or not supported, then the client computer will not be able to perform IP/Name resolution and will not be able to communicate with the remote computers by using the host names. You can overcome this temporarily by adding the IP addresses and the fully qualified domain names in the host file of the client computer. It is not recommended to add Hosts file entries as these create communications control points that may impact other server operations and are difficult to maintain and manage. These should be used only as temporary solutions until the larger network or DNS issues can be resolved. You can use the following steps to add entries to the host file of the client computer with Windows operating system:

1. Logon to the computer as an Administrator.
2. Click **Start**, and then click **Run**.
3. In the **Open** box, type **drivers**, and then click **OK**.
4. Double-click **etc** folder, open **hosts** file with Notepad, and then type the IP address, the fully qualified domain name and the host name of the remote computer. You can add additional entries on separate lines. Save the `hosts` file after adding the entries.

Example:

```
172.32.xxx.xxx dbwin1.idclab.loc dbwin1
172.14.xxx.xxx dbwin2.idclab.loc dbwin2
```

Similarly, to enable reverse lookup on a remote computer, repeat step 1 through step 3 for adding IP address of the client computer in the `hosts` file of the remote computer.

For more information, see: [http://technet.microsoft.com/en-us/library/cc780585\(WS.10\).aspx](http://technet.microsoft.com/en-us/library/cc780585(WS.10).aspx)

For a Unix computer, the entries should be added in the `host` file located under `etc` folder.

SHAREPOINT

"Usage Analysis" must be enabled in SharePoint for SRM to collect data about hits, for those reports that include this information. Refer to Microsoft SharePoint documentation for information about enabling "Usage Analysis".

ORACLE

Consider the following configuration items before running data collection from the Oracle Agent:

- Verify that Oracle databases are in OPEN status before running a data collection job.
- Verify that the Oracle databases are running properly, and that there are no database-related memory issues.
- Verify that the `shared_pool_size` parameter in the `init<SID>.ora` file is set to the maximum valid value so that SQL queries can run successfully for data collection.
- Data collection by the appropriate file system SRM Agent must be scheduled to occur *before* data collection by the SRM Oracle Agent.

[Back to Top](#)

SRM Data Collection - How To

[Topics](#) | [How To](#) | [Troubleshoot](#) | [Related Topics](#)

Run/Schedule a Data Collection Job for an SRM Instance, Agent or Subclient

Schedule Agentless SRM policies

RUN/SCHEDULE A DATA COLLECTION JOB FOR AN SRM INSTANCE, AGENT OR SUBCLIENT

Required Capability: See Capabilities and Permitted Actions

▶ To run/schedule a Data Collection job for an SRM instance, agent or subclient:

1. From the CommCell Browser, right-click the SRM instance, agent or subclient, and then click **Data Collection** from the short-cut menu.
2. From the Schedule Data Collection Job dialog box, select the agent for which you want to run the Data Collection job from the **Agent** list. (This option is not applicable at the SRM agent and subclient levels.)
3. Choose the **Job Type**. (This option is not applicable at the SRM subclient level.)
 - If you select **Discovery**, basic information on file system assets is collected and minimal processing on the server is required.
 - If you select **Discovery and Analysis**, detailed statistics is collected and these jobs require more processing throughput on the server.
 - If you select **Discovery and Analysis**, and if the agent has more than one subclient, click the name of the subclient you want from the **Subclient** list. (This option is not applicable at the SRM subclient level.)
4. Choose **Schedule** or **Immediate** from the **Job Initiation** area.
5. Configure any other options as appropriate.
6. Click **OK**.

If you have selected the **Immediate** option, you can track the progress of the job from the **Job Controller** window.

For more information on Scheduling, see Scheduling.

SCHEDULE AGENTLESS SRM POLICIES

Required Capability: See Capabilities and Permitted Actions

▶ To schedule an exiting SRM Agentless Policy:

1. From the CommCell Browser, expand **Policies** and select **Agentless SRM Policies**.
2. In the main window right-click the Policy that needs to be scheduled and click **Create Schedule**.
3. In the Job Initiation dialog box, choose **Immediate** or **Schedule**.



If you have selected the **Run Immediately** option, you can track the progress of the job from the **Job Controller** window.

4. Click **Configure** and select the required scheduling options.
5. Click **OK**.

For more information on Scheduling, see Scheduling.

SRM NAS Agent Summaries

Overview

Client Summaries

Agent Summaries

Subclient Summaries

Network Shares Summaries

Data Movers Summaries

File Systems Summaries

Storage Pools Summaries

Storage Systems Summaries

Meta Volumes Summaries

Enterprise Viewer

OVERVIEW

SRM NAS Agent Summaries provide a concise view of the status of SRM NAS entities in the CommCell Console. The status information includes the resource, memory, and CPU usage, as well as other resource-related information. Summary information is provided as images in the form of bar graphs and pie charts to provide a succinct snapshot of the statistical information. While viewing summary, data rows in tables can be sorted by any one of the columns listed in that summary.

When you select a SRM NAS entity from the CommCell Console, its summary information appears in the main window. Each section can be expanded or collapsed as desired.

The following section describes the available summary types of SRM NAS Agent at different levels in the CommCell Console:

CLIENT SUMMARIES

Summary information at the client level shows statistical data for the following:

- **Software Instances**

The summary information for software instances displays details like Package, version and vendor name of all instances of the installed software.

- **Process Information**

The summary information for processes displays details like Image Name, PID, Session ID, CPU Time, CPU Usage, Memory Usage, User Name, etc for each process that runs on the client.

- **Services**

The summary information for services displays details like Name, State, Startup Type, and Log on information for each service that exists on the client.

AGENT SUMMARIES

The SRM NAS Agent displays charts for **NAS Filer Usage History**, **File Distribution by Size**, **File Distribution by Access Time**, **File Distribution by Modification Time** at the agent level.

Summary information includes Advisories and Properties at the agent level. Advisory information includes severity level, the time stamp, and a brief description. Properties at the Agent level include physical information like, Type, Model, Firmware Revision, OS Version, Uptime, etc.

SUBCLIENT SUMMARIES

Summary at the subclient level include charts for **File System Usage by Subclient**. This chart displays details like Name, Average Tree Depth, Maximum Tree Depth, File Count, Directory Count, Average File Size, etc for the selected subclient.

However at the user defined or default Subclient level **Properties** showing physical information including name, state (enabled or disabled) last modification time and last analysis times, etc. are displayed along with Charts. The SRM NAS Agent at this level displays charts for **File Distribution by Size**, **File Distribution by Access Time** and **File Distribution by Modification Time**.

1. From the CommCell Console, select the Client Computer with SRM NAS Agent for

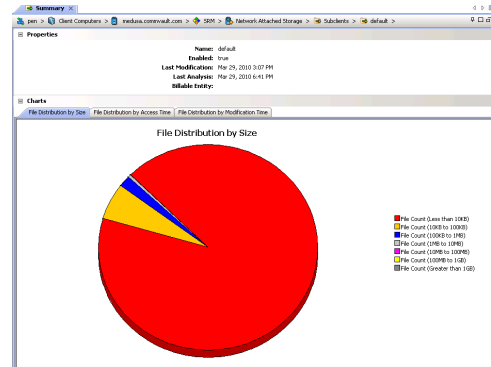
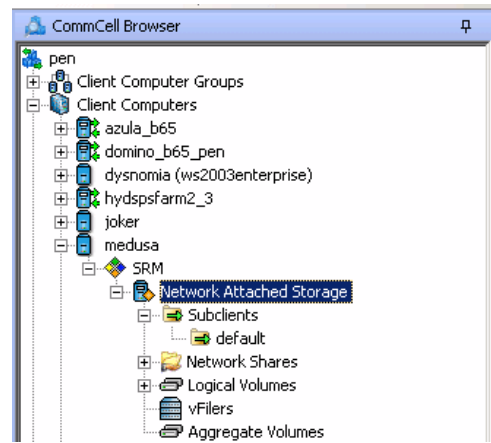
which you want to view summaries.

- Expand **SRM** and select **Network Attached Storage**, then select **Subclients**.



You may also expand subclients node and alternatively select default or user defined subclient to view its summary.

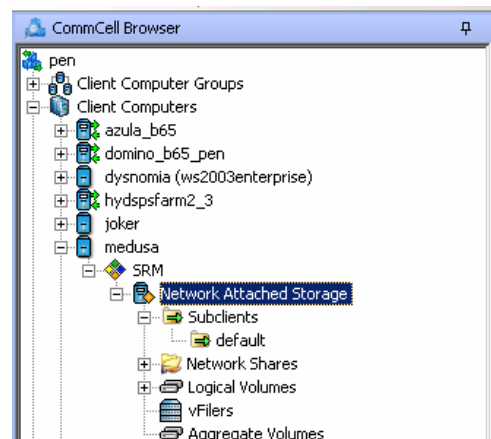
- The associated **Subclient Summary** will appear in the main window.



NETWORK SHARES SUMMARIES

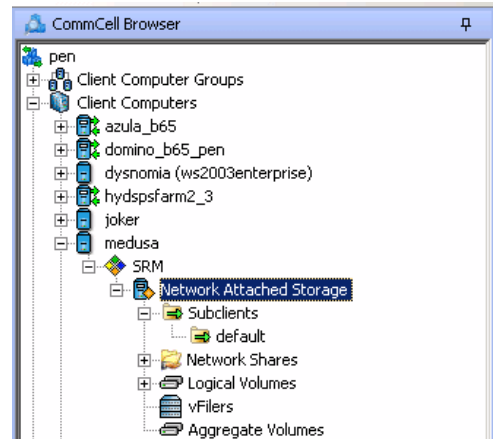
The SRM NAS Agent displays charts for **NAS Usage Statistics**. Each Share also displays Properties including physical information like Path, Protocol, Free Space on Volume, etc. apart from Advisories including severity level, the time stamp, and a brief description.

- From the CommCell Console, select the Client Computer with SRM NAS Agent for which you want to view summaries.
- Expand **SRM** and select **Network Attached Storage**, then select **Network Shares**.



- The associated **Network Shares Summary** will appear in the main window.

1. From the CommCell Console, select the Client Computer with SRM NAS Agent for which you want to view summaries.
2. Expand **Agent** and select **Network Attached Storage**, then select **File Systems**.



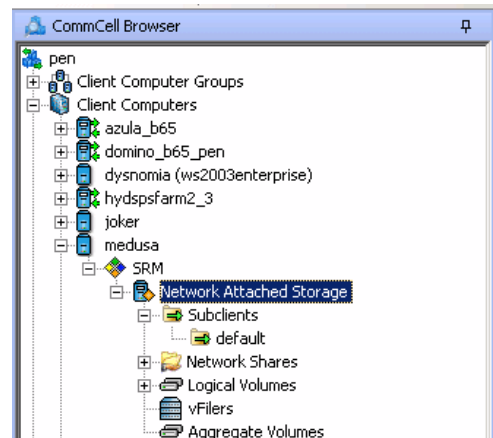
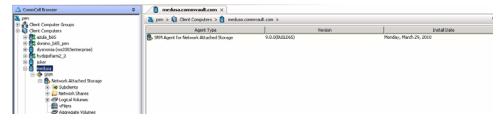
3. The associated **File Systems Summary** will appear in the main window.

STORAGE POOLS SUMMARIES

Summary information at the Storage Pools level include charts for **Storage Pool Capacity**. Summary also includes Advisories with severity level, the time stamp, and a brief description.

Each pool displays Properties including physical information like Name, EMC ID, Type, Description, etc. Volumes, File Systems and SnapSure SavVol depending on the availability.

1. From the CommCell Console, select the Client Computer with SRM NAS Agent for which you want to view summaries.
2. Expand **Agent** and select **Network Attached Storage**, then select **Storage Pools**.



3. The associated **Storage Pools Summary** will appear in the main window.

STORAGE SYSTEMS SUMMARIES

Summary information is displayed in tabular format and includes Name, EMC ID, Status, Type, Model, Serial Number, Disk Count for the storage system.

META VOLUMES SUMMARIES

Summary information includes Advisories with severity level, the time stamp, and a brief description.

ENTERPRISE VIEWER

The **Enterprise Viewer** displays the physical assets of NAS File Server Clients in a single location. Summaries can be viewed by expanding the nodes and

clicking the assets displayed in the **Enterprise Viewer**.

- Larger enterprises with many NAS File Servers will find it convenient that the **Enterprise Viewer** displays all NAS assets in one place.
-

[Back to Top](#)

SRM NAS Reports

Topics | How To | Related Topics

SRM reports provide a sleek, versatile, and easy-to-use reporting framework that enables you to easily and effectively choose, view, and analyze vital data. Customized reporting is available through the selection of filter criteria (e.g., individual columns, specific clients, specific client computer groups, etc.) and filters as described in SRM Reports.

From the CommCell Console, the SRM Report Manager provides these types of reports:

- Computer Inventory
- Cost Analysis
- Applications

Initial templates are provided for each type (e.g., Cost History by Application, Capacity by File System, etc.) where columns have been preselected. The only requirement before generating and displaying the report is to specify one or more client computers. For most reports, a data collection job must also have been run prior to generating the report.

Reports can be customized by adding or removing columns in the initial templates or specifying additional Filter Criteria.

This following table lists:

- The category/columns that can be selected.
- A description of the category.
- For each type of data collection job, if data is collected for the column, it is marked with a ✓. Running an Analysis Job may be required to produce complete and accurate data. An Analysis Job also includes the data collected by a Discovery Job.

For step-by-step instructions on generating reports, see Display, Run, or Schedule a Report Manager Report for step-by-step instructions.

CATEGORY/COLUMN	DESCRIPTION	SRM NAS AGENT	
		DISCOVERY JOB	DISCOVERY AND ANALYSIS JOB
CIFS Shares	Displays statistics of the Common Internet File System (CIFS) protocol per each share.		
Billable Entity			✓
Free Space			✓
Share Name		✓	
Share Path		✓	
Total Space		✓	
Used Space			✓
CIFS Statistics	Displays various CIFS request types that have been processed since the last time CIFS services were restarted on the NAS file server.		
Data Mover		✓	
Direct		✓	
Get Attribute		✓	
Lock		✓	
Open Close		✓	
Other		✓	
Read		✓	
Write		✓	
Client	Displays aspects of each client and their respective subclients on which the SRM NAS Agent is installed.		
Client Computer Group		✓	
Collection Status		✓	
Collection Time		✓	

Computer		✓	
Subclient		✓	
Client Properties	Displays aspects of the client computer on which the SRM NAS Agent is installed.		
Hostname		✓	
Memory		✓	
Operating System		✓	
OS Vendor		✓	
OS Version		✓	
Processors		✓	
Service Pack		✓	
SP Version		✓	
Time Zone		✓	
Data Mover	Displays the physical data movers that are present on the filer. Displays information such as, type of data mover (NAS, Standby, RDF), and role (primary or standby).		
Data Mover		✓	
Data Mover Status		✓	
EMC ID		✓	
Free Space			✓
Role		✓	
Type		✓	
Uptime		✓	
Used Space		✓	
Data Mover Capacity History	Displays historical view of data movers. Use to predict future use patterns for capacity planning.		
As Of		✓	
Data Mover		✓	
Percent Free		✓	
Percent Used		✓	
Space Free		✓	
Total Capacity		✓	
Used Space		✓	
Data Mover CIFS Servers	Displays the physical data movers that are using the Common Internet File System (CIFS) protocol.		
CIFS Server		✓	
Default		✓	
Domain		✓	
NetBIOS Name		✓	
Data Mover Host Names	Displays the host name and IP address that is associated with the data mover.		
Host Name		✓	
IP Address		✓	
Data Mover Mount Points	Displays the mount points of the data movers.		
File System ID		✓	
File System Name		✓	
Mount Path		✓	

Read Only		✓	
Data Mover NFS Shares	Displays the physical data movers that are using the Network File System (NFS) protocol.		
Share Path		✓	
Share Status		✓	
EMC Checkpoints	Displays the File System checkpoints that are present on an EMC, such as the checkpoint name, name of SnapSure SavVol, and when checkpoint was created.		
Checkpoint		✓	
Date		✓	
Full Mark		✓	
Snapsure SavVol		✓	
Status		✓	
Used Percent		✓	
EMC Data Mover File Distribution By Access Time	Displays file statistics of EMC data movers and average size of files, total file size, and type by access time.		
Average File Size			✓
Files			✓
Group			✓
Total File Size			✓
Type			✓
EMC Quota Trees	Displays the Quota Trees that are present on an EMC, such as the control station name, name of file system, and quota tree path.		
Quota Tree Path		✓	
EMC Storage Pools	Displays a list of system-defined storage pools of an EMC. Use it to report on current capacity of a storage pool, predict future use patterns for capacity planning, and to identify the storage pools with virtual capacity that exceeds physical capacity.		
Automatic Extension		✓	
File System Total Capacity		✓	
File System Used Space		✓	
File System Virtual Capacity		✓	
Free Space		✓	
Name		✓	
Obtain Unused Disk Volumes		✓	
Percent Committed		✓	
Remaining Potential Capacity		✓	
Total Capacity		✓	
Type		✓	
Used Space		✓	
Virtual Capacity		✓	
EMC VDM Capacity History	Displays the capacity of all file systems mounted on VDMs of an EMC, and tracks changes in free and used space over time. Useful for trending purposes.		
As Of		✓	
Name		✓	
Percent Free		✓	

Percent Used		✓	
Space Free		✓	
Total Capacity		✓	
Used Space		✓	
Exchange PST Files	Displays aspects of PST (personal storage) files created by Microsoft Outlook.		
Accessed			✓
Created			✓
Group			✓
Modified			✓
Name			✓
Owner			✓
Size			✓
File by Extensions	Displays aspects of each file per extension that is used and the number of files that include each file extension.		
Average File Size			✓
Extension			✓
Files			✓
Maximum File Size			✓
Total File Size			✓
File System Details	Displays file system statistics such as space capacity, snapshot space usage, and file inodes that store information on files (e.g., user and group ownership, access mode, and type of file).		
%Free		✓	
%Used		✓	
Data Used Space		✓	
Free Space		✓	
Snapshots Used Space		✓	
Total Snapshots		✓	
Total Space		✓	
File System Usage by Subclient	Displays the used space in the file system for each subclient.		
Used Space			✓
File System Usage by User	Displays file statistics for each user and how the files are stored and organized in the file system.		
Average File Size			✓
Files			✓
Maximum File Size			✓
Name			✓
Total File Size			✓
File System Usage by User Group	Displays file statistics by user groups and how the files are stored and organized in the file system.		
Average File Size			✓
Files			✓
Maximum File Size			✓
Name			✓
Total File Size			✓

File System Usage History	Displays overall file system statistics. Useful for trending purposes.		
%Free		✓	
%Used		✓	
As Of		✓	
Free Space		✓	
Total Space		✓	
Used Space		✓	
Filer Details	Displays NAS filers statistics, such as NAS file servers' operating system, firmware version, model number, and type.		
%Free		✓	
%Used		✓	
Firmware Version		✓	
Free Space		✓	
Last Reboot		✓	
Model		✓	
Software Version		✓	
Spare Capacity		✓	
Total Capacity		✓	
Used Space		✓	
Used Space Rank		✓	
Filer Usage History	Displays overall NAS filers statistics. Useful for trending purposes.		
%Free		✓	
%Used		✓	
As Of		✓	
Free Space		✓	
Grouping Set		✓	
Spare Capacity		✓	
Total Capacity		✓	
Used Space		✓	
Junk Files	Displays files in each file system that contain "junk" (e.g., core files, HTML files, swap files). Useful for investigation and/or removal.		
Accessed			✓
Created			✓
Group			✓
Modified			✓
Name			✓
Owner			✓
Size			✓
NAS Common Entities	Displays overall aspects per each computer selected (e.g., file system, shared storage network (filer), etc.).		
File System		✓	
Filer		✓	
Type		✓	
NetApp Aggregate Usage History	Provides a historical view of capacity of all		

	aggregates, and tracks changes in free and used space over time. Useful for trending purposes.		
As Of		✓	
Free Space		✓	
Name		✓	
Percent Used		✓	
Total Capacity		✓	
Used Space		✓	
NetApp Aggregate Volume	Displays statistics of aggregate volumes on NAS filers, such as used space, and total, virtual, and remaining capacity for each aggregate.		
Aggregate		✓	
Flexible Volume		✓	
Free Space		✓	
Space Guarantee		✓	
Total Capacity		✓	
Type		✓	
Used Space		✓	
Virtual Capacity		✓	
Volume Used Space		✓	
NetApp QTrees	Displays properties of Qtrees on NetApp filers.		
Oplocks Enabled		✓	
QTree		✓	
QTree Volume		✓	
Style		✓	
NetApp Snapshots	Displays statistics of the volume snapshots present on NetApp filers.		
Creation		✓	
Snapshot		✓	
Status		✓	
Total Cumulative %		✓	
Total Incremental %		✓	
Used Cumulative %		✓	
Used Incremental %		✓	
Used Space		✓	
Volume		✓	
NetApp Vfiler	Displays aspects of vFilers of NetApp filers with MultiStore license.		
As Of		✓	
Default		✓	
Grouping Set		✓	
IP Space		✓	
Name		✓	
Status		✓	
Used Space		✓	
NFS Share Interfaces			
Interface		✓	

NFS Shares	Displays aspects and of NFS Shares.		
Free Space		✓	
Name		✓	
Path		✓	
Total Space		✓	
Used Space		✓	
NFS V2 Statistics	Displays statistics of the various NFS v2 request types that have been processed since the last time NFS services were restarted on the NAS filer or Data Mover.		
Create		✓	
Data Mover		✓	
File System Stat		✓	
Get Attribute		✓	
Link		✓	
Lookup		✓	
Make Directory		✓	
Null		✓	
Read		✓	
Read 16B to 32767B		✓	
Read 1KB to 2047B		✓	
Read 2KB to 4095B		✓	
Read 32KB to 65535B		✓	
Read 4KB to 8191B		✓	
Read 512B to 1023B		✓	
Read 64KB to 131071B		✓	
Read 8KB to 16383B		✓	
Read Directory		✓	
Read Link		✓	
Read Under 512		✓	
Rename		✓	
Root		✓	
Set Attribute		✓	
Symlink		✓	
Write		✓	
Write 16B to 32767B		✓	
Write 1KB to 2047B		✓	
Write 2KB to 4095B		✓	
Write 32KB to 65535B		✓	
Write 4KB to 8191B		✓	
Write 512B to 1023B		✓	
Write 64KB to 131071B		✓	
Write 8KB to 16383B		✓	
Write Cache		✓	
Write Under 512		✓	
NFS V3 Statistics	Displays statistics of the various NFS v3 request types that have been processed since the last time NFS services were restarted on the NAS filer or		

	Data Mover.		
Access		✓	
Commit		✓	
Create		✓	
Data Mover		✓	
File System Info		✓	
File System Stat		✓	
Get Attribute		✓	
Link		✓	
Lookup		✓	
Make Directory		✓	
Make Node		✓	
Null		✓	
Path Configured		✓	
Read		✓	
Read 16B to 32767B		✓	
Read 1KB to 2047B		✓	
Read 2KB to 4095B		✓	
Read 32KB to 65535B		✓	
Read 4KB to 8191B		✓	
Read 512B to 1023B		✓	
Read 64KB to 131071B		✓	
Read 8KB to 16383B		✓	
Read Directory		✓	
Read Directory Plus		✓	
Read Link		✓	
Read Under 512		✓	
Rename		✓	
Set Attribute		✓	
Symlink		✓	
Write		✓	
Write 16B to 32767B		✓	
Write 1KB to 2047B		✓	
Write 2KB to 4095B		✓	
Write 32KB to 65535B		✓	
Write 4KB to 8191B		✓	
Write 512B to 1023B		✓	
Write 8KB to 16383B		✓	
Write Under 512		✓	
Prohibited Files	Displays aspects of files that are not allowed (or forbidden) in NAS.		
Accessed			✓
Created			✓
Group			✓
Modified			✓
Name			✓

Owner			✓
Size			✓
Quotas	Displays a list of quotas configured on NAS filers. Quotas are defined per logical volume or qtrees, or per file system or quota tree.		
Default		✓	
Disk Space Hard Limit		✓	
Disk Space Soft Limit		✓	
Disk Space Threshold		✓	
File Count Hard Limit		✓	
File Count Soft Limit		✓	
Files Used		✓	
Percent Used		✓	
Scope		✓	
Space Remaining		✓	
Tree		✓	
Type		✓	
Used Space		✓	

[Back to Top](#)

SRM NAS Reports - How To

[Topics](#) | [How To](#) | [Related Topics](#)

Display, Run, or Schedule a Report Manager Report

File Categories for Reports

Time Categories for Reports

Top 'N' Category Counts for Reports

Configure IIS for Windows Server 2008

Save a Report Template

RUN, SCHEDULE, OR SAVE A SRM REPORT MANAGER REPORT

Before You Begin

Required Capability: Capabilities and Permitted Actions

▶ To generate, save, or schedule an SRM Report Manager Report:

1. In the **CommCell Browser**, expand **Reports** and then **SRM Report Manager**, click a report type.
2. Select one or more **Client Computers** or **Client Computer Groups** from the **Client Selection** tab. This is a required step.
3. Click the **Column Selection** tab, select a **Category** and then one or more **Available** category/columns and click on **Add**.

To remove a previously selected category, click on the selected filter from **Selected** column and click **Remove**.

Remove All will remove all previously selected categories for the reports.

4. Click the **Report Options** tab and configure these settings in the report:
 - o From the **General** tab set **Select Time Range** and **Include Trending options**.

These two options apply to history charts.

For all reports, the **Maximum number of Bar Points Per Chart** may be increased or decreased from the default value of 10 and **Draw All Bar**

Points or Lines option may be selected. The default of 100 rows to output may be increased or decreased by specifying a number in **Limit number of rows to output**. The default of 5000 rows per page may be increased or decreased by specifying the desired number in **Limit number of rows per page**.

- Click the **Advanced Options** tab and set the **Data Size Unit** for the Table and/or Chart (GB, MB, etc.). Also, the **Output Locale** may be changed from the default that is English. The ordering of the report may be changed by moving columns in **Set Sorting Order of Rows to Return**.
5. Optionally, click the **Get SQL Query** tab to generate the query for the filter criteria specified. This will display the SQL query that will be used to get the data and generate the report. The query that is displayed is Read-only and can be used in a third-party SQL application, such as SQL Server Management Studio.
 6. Choose one of these options to generate the report:
 - Click **Run** to generate the report immediately and view the results in the CommCell Console.
 - Click **Schedule** to generate and schedule the report on a daily, weekly, monthly, yearly, or even one time basis. Specify the report language (see Languages - Support for the list of languages supported in Reports), format (HTML, EXCEL, PDF), and location. Optionally, notifications can be configured so the report can be emailed, sent to an SNMP trap, or RSS feed.

When scheduling, patterns can also be applied to the report so it runs on a specific time, repeated every so many days, or run for a particular number of times. Some reports allow enabling Forecasting by specifying default trending interval and number of data points on which the trending interval is based. For more information on trending, see Forecasting.

 - Click **Save As...** to save the report filter criteria, schedule information, notifications to a template so it can be used to generate a report at a later date. All report templates are saved under **My Reports**.

FILE TYPE CATEGORIES FOR REPORTS

Required Capability: Capabilities and Permitted Actions

▶ To configure file type categories for reports:

1. In the **CommCell Browser** expand **Reports** and right-click **SRM Report Manager** and select **File Type Categories**.
2. In the Configure File Categories dialog box:
 - Select the agent for which you want to configure File Categories.
 - Select a **File Category** to add, delete, or edit associated extensions.
 - To add an extension, type the new extension, and click **Add** to save it.
 - To delete an extension, select it from the list, and click **Delete**.
 - To edit an extension, select it from the list, make the changes, then click **Edit** to save your changes.
 - Optionally, click **Reset** to return all categories to their default configuration (see Default File Categories).
3. Click **OK** to save your changes and close the Configure File Categories dialog box. You can also click **Apply** to save any changes to the current Agent configuration, and then repeat this procedure from step 2 to configure File Categories for other agents.

TIME CATEGORIES FOR REPORTS

Required Capability: Capabilities and Permitted Actions

▶ To configure Time Categories for reports:

1. In the **CommCell Browser** expand **Reports** and right-click **SRM Report Manager** and select **Time Categories**.
2. In the Configure Time Categories dialog box, select an Agent for which you want to modify Time Categories.
3. For each Interval:
 - Specify a Name for each custom Time Category.
 - Select the minimum number of days in the time range, or select **None**.
 - Select the maximum number of days in the time range, or select **Unlimited**.
4. Click **OK** to save your changes and close the Configure Time Categories dialog box, or click **Apply** to save your changes for the currently selected Agent, and repeat this procedure from Step 2 to configure Time Categories for other Agents.

TOP 'N' CATEGORY COUNTS FOR REPORTS

Required Capability: Capabilities and Permitted Actions

▶ To configure category counts for Top 'N' reports:

1. In the **CommCell Browser** expand **Reports** and right-click **SRM Report Manager** and select **Top 'N' Categories**.
 2. In the Configure Top 'N' Category Counts dialog box, change the count for each Agent for which you want to modify the Category Count in reports.
 3. Click **OK** to save your changes and close the Configure Top 'N' Category Counts dialog box.
-

CONFIGURE IIS FOR WINDOWS SERVER 2008

Required Capability: Capabilities and Permitted Actions

▶ To configure IIS and enable appropriate roles for Windows Server 2008:

1. Click **Start**, and then click **Server Manager**.
2. In **Server Manager**, right click **Roles**, and then click **Add roles**. The **Add Roles Wizard** window is displayed.
3. In the **Add Roles Wizard**, click **Server Roles**.
4. Select the **Web Server (IIS)** check box from Server Roles, and click **Next** to continue.

When the **Web Server (IIS)** check box is selected, the **File Server** check box is automatically selected due to role dependency.

5. On the **Role Services** page, expand **Common HTTP Features**, and select the following check boxes:
 - Static Content
 - Default Document
 - Directory Browsing
 - HTTP Errors
 - HTTP Redirection
6. Expand **Application Development**, and select the **ASP.NET**, **ASP**, and **CGI** check boxes.

If you are prompted to add required role services, click **OK**.

7. Expand **Security**, and select the **Basic Authentication** and **Windows Authentication** check boxes.
 8. Expand **Management Tools**, expand **IIS 6 Management Capability**, and select the following check boxes:
 - IIS Metabase Compatibility
 - IIS 6 WMI Compatibility
 - IIS 6 Scripting Tools
 - IIS 6 Management Console
 9. Click **Next**, and then click **Install**.
-

SAVE A REPORT TEMPLATE

Required Capability: Capabilities and Permitted Actions

▶ To save a report template:

1. In the **CommCell Browser**, expand **Reports** and then select **SRM Report Manager** and select a report type.
The specified Report Window will appear.
 2. At the top of the window, click **Save As...**
 3. In the Save Template dialog box, enter the name of the report and click **OK** to exit the screen.
The report template name displays in the **My Reports** node of the CommCell Browser.
-

Admin Job History

[Topics](#) | [How To](#) | [Related Topics](#)

The **Admin Job History Filter** dialog box allows you to view detailed, historical information about the following administration job types:

- All
- Data Aging
- Export Media
- Auxiliary Copy
- Inventory
- Disaster Recovery Backup
- Data Verification
- Offline Content Indexing
- Erase Media
- Erase Backup/Archived Data
- Drive Validation
- Drive Cleaning
- Stamp Media
- Install Updates
- Download Updates
- Disk Library Maintenance
- SRM Reports
- Information Management

Once chosen, your filter options are then displayed in the Admin Job History window. From this window you can view more detailed information such as the:

- Details of the administration job.
- Events of the administration job.
- Log files of the administration job.

For information on Job Details displayed in the Job History, see [Viewing Job Information](#).

[Back to Top](#)

Admin Job History - How To

[Topics](#) | [How To](#) | [Related Topics](#)

[View Admin Job History](#)

[View Job History Details](#)

[View the Events of a Job History](#)

[Viewing the Log Files of a Job History](#)

[Resubmit an Admin Job](#)

VIEW ADMIN JOB HISTORY

Required Capability: See [Capabilities and Permitted Actions](#)

▶ To view admin job history:

1. From the CommCell Browser, right-click the CommServe, click **View**, and then click **Admin Job History**.
2. From the Admin Job History Filter dialog box, select the filter options that you want to apply and click **OK**.
3. The Admin Job History dialog box displays with the specified filter options.
4. Click **Close**.

VIEW JOB HISTORY DETAILS

Required Capability: See Capabilities and Permitted Actions

▶ To view the details of a job history:

1. From the CommCell Browser, right-click the entity (e.g., subclient, client computer, etc.) whose job history you want to view, click **View**, and then click job history.
2. From the Job History Filter dialog box, select the filter options that you want to apply and click **OK**.
3. From the Data Management Job History window, right-click the job whose job details you want to view, and then click **View Job Details**.
4. The Job Details dialog box appears, displaying detailed job history in General, Details, Phase Details and Attempts tabs for the selected job.
5. Click **OK**.



If viewing the details of a job with a pending or failed status, the **Reason for Job Delay** field will contain an Error Code, which, if clicked, will launch the customer support website displaying troubleshooting article(s) related to the specific issue.

VIEW THE EVENTS OF A JOB HISTORY

Required Capability: See Capabilities and Permitted Actions

▶ To view the events associated with a job:

1. From the CommCell Browser, right-click the entity (e.g., subclient, client computer, etc.) whose job history you want to view, click **View**, and then click **Job History**.
2. From the Job History Filter dialog box, select the filter options that you want to apply and click **OK**.
3. From the Data Management Job History window, right-click the job whose job details you want to view, and then click **View Events**.
4. The All Found Events window gets displayed. If no events were found for the back up, a message is displayed to that effect.
5. Click **Close**.

VIEW THE LOG FILES OF A JOB HISTORY

Required Capability: See Capabilities and Permitted Actions

▶ To view the log files of a Job History:

1. From the CommCell Browser, right-click the entity whose job history you want to view, and then click to view a job history.
2. From the job history filter window select the filter options, if any, that you want to apply, and then click **OK**.
3. From the job history window, right-click the job whose log files you want to view, and then click **View Logs**.
4. The contents of the log file related to the selected job history are displayed in the **Log File for Job n** window.

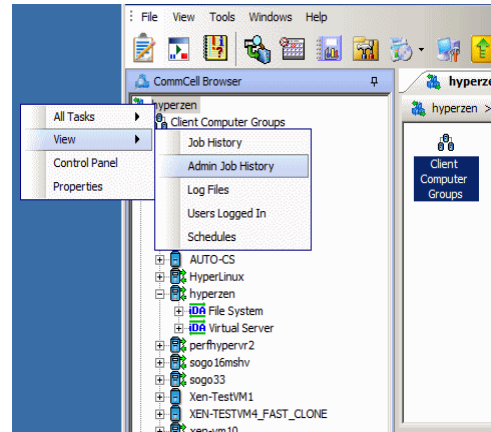
RESUBMIT AN ADMIN JOB

Required Capability: See Capabilities and Permitted Actions

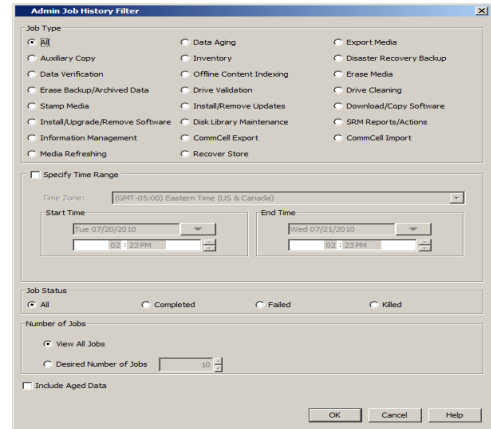
▶ To resubmit an admin job:

1. From the CommCell Browser, right-click the CommServe, click **View**, and then click **Admin Job History**.

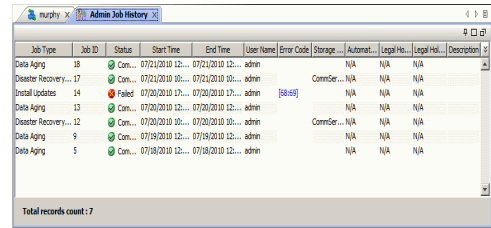
- From the Admin Job History Filter dialog box, select the filter options that you want to apply and click **OK**.



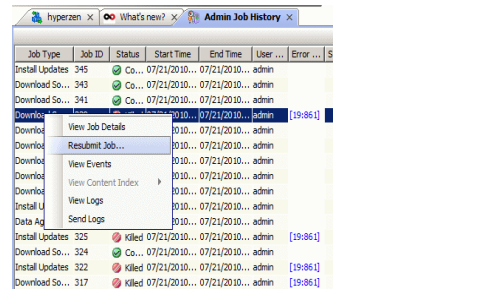
- The Admin Job History window displays with the specified filter options.



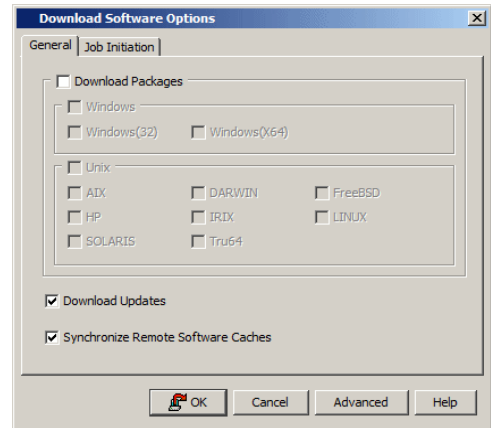
- Right-click on any job (e.g., Download Software), and select **Resubmit**.



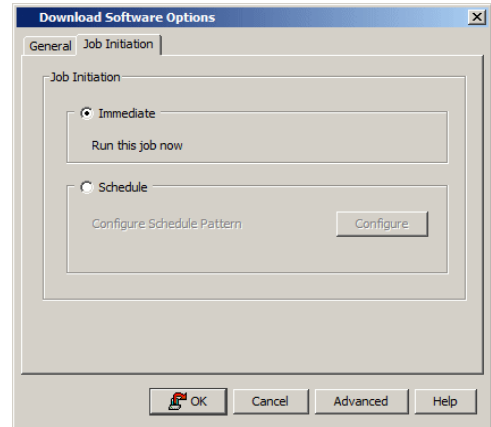
- Select the job options appropriate for the job you want to restart.



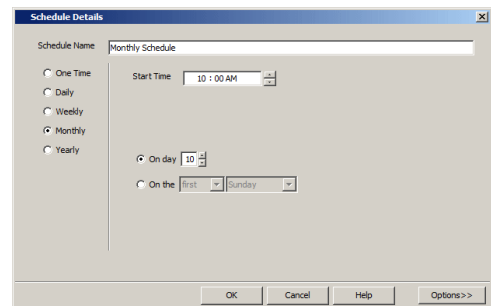
- If you need to run the backup operation immediately, select **Immediate** from the **Job Initiation** tab. Go to step 11.



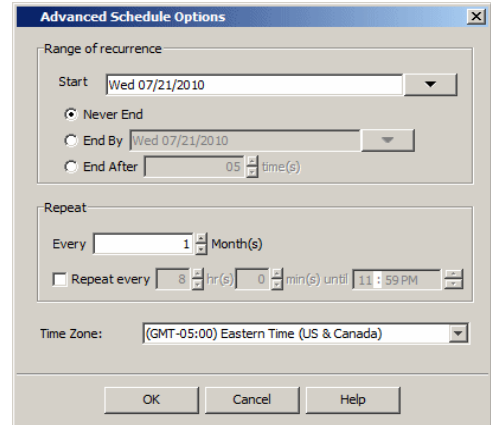
- If you need to schedule the restore operation, select **Schedule** from the Job Initiation tab and click **Configure**.
- From the **Schedule Details** dialog box that appears, select the appropriate scheduling options.
Click **Options** to view the Advanced Schedule Options dialog box.



- From the **Advanced Schedule Options** dialog box:
 - Range of recurrence:** Specify the date on which you want this schedule to take effect.
 - Repeat:** Select the value for which you want to run the job repeatedly on the day in which the job is scheduled to run.
 - Time Zone:** Select a specific time zone from which the job schedule time will be based.



Click **OK** to close the **Advanced Schedule Options** dialog box.



- Click **OK** to close the **Schedule Details** window.
- Click **OK** to close the job restart window.

[Back to Top](#)

SRM Data Collection Job History

Topics | How To | Related Topics

The **Data Collection History Filter** dialog box allows you view detailed, historical information about data collection jobs for the selected SRM entity. Data collection jobs run automatically according to the parameters you have selected, and appear in the Job Controller as a scheduled job. After the successful completion of the Data Collection job, the client information is gathered at the SRM Server and the job status is shown as completed in the Job Controller.

For information on Job Details displayed in the Job History, see Viewing Job Information.

Once chosen, your filter options are then displayed in the Data Collection Job History Window of the SRM entity. From this window you can view more detailed information such as:

- Viewing the Events of a Job History
 - Viewing the Log Files of a Job History
-

SRM Data Collection Job History - How To

Topics | How To | Related Topics

View Job History Details

View the Events of a Job History

View the Log Files of a Job History

VIEW JOB HISTORY DETAILS

Required Capability: See Capabilities and Permitted Actions

▶ To view the details of a job history:

1. From the CommCell Browser, right-click the entity (e.g., subclient, client computer, etc.) whose job history you want to view, click **View**, and then click job history.
2. From the Job History Filter dialog box, select the filter options that you want to apply and click **OK**.
3. From the Data Management Job History window, right-click the job whose job details you want to view, and then click **View Job Details**.
4. The Job Details dialog box appears, displaying detailed job history in General, Details, Phase Details and Attempts tabs for the selected job.
5. Click **OK**.



If viewing the details of a job with a pending or failed status, the **Reason for Job Delay** field will contain an Error Code, which, if clicked, will launch the customer support website displaying troubleshooting article(s) related to the specific issue.

VIEW THE EVENTS OF A JOB HISTORY

Required Capability: See Capabilities and Permitted Actions

▶ To view the events associated with a job:

1. From the CommCell Browser, right-click the entity (e.g., subclient, client computer, etc.) whose job history you want to view, click **View**, and then click **Job History**.
 2. From the Job History Filter dialog box, select the filter options that you want to apply and click **OK**.
 3. From the Data Management Job History window, right-click the job whose job details you want to view, and then click **View Events**.
 4. The All Found Events window gets displayed. If no events were found for the back up, a message is displayed to that effect.
 5. Click **Close**.
-

VIEW THE LOG FILES OF A JOB HISTORY

Required Capability: See Capabilities and Permitted Actions

▶ To view the log files of a Job History:

1. From the CommCell Browser, right-click the entity whose job history you want to view, and then click to view a job history.
 2. From the job history filter window select the filter options, if any, that you want to apply, and then click **OK**.
 3. From the job history window, right-click the job whose log files you want to view, and then click **View Logs**.
 4. The contents of the log file related to the selected job history are displayed in the **Log File for Job *n*** window.
-

[Back to Top](#)

