

EVIDEN

BullSequana EX

TS 034.02 Release Note

The following copyright notice protects this book under Copyright laws which prohibit such actions as, but not limited to, copying, distributing, modifying, and making derivative works.

Copyright ©Bull SAS 2024, part of Eviden group. Eviden is a registered trademark of Eviden SAS. This document, or any part of it, may not be reproduced, copied, circulated and/or distributed nor quoted without prior written approval from Bull SAS.

Trademarks and Acknowledgements

We acknowledge the right of proprietors of trademarks mentioned in this manual.

All brand names and software and hardware product names are subject to trademark and/or patent protection.

Quoting of brand and product names is for information purposes only and does not represent trademark and/or patent misuse.

Hardware

July 2024

**Eviden
30 bis rue du Nid de Pie
49000 Angers
FRANCE**

The information in this document is subject to change without notice. Eviden will not be liable for errors contained herein, or for incidental or consequential damages in connection with the use of this material.

Table of Contents

Table of Contents	i
Preface	p-1
Chapter 1. Overview	1-1
1.1. Operating Systems (OS) versions	1-1
1.1.1. Red Hat Enterprise Linux	1-1
1.1.2. Microsoft Windows	1-1
1.2. New features and changes	1-1
1.2.1. BIOS_SAR160	1-1
1.2.2. OMF_ORMB	1-1
1.3. Resolved issues	1-1
Chapter 2. Known issues and restrictions	2-1
2.1. Modifying network settings	2-1
2.2. Collecting logs	2-1
Chapter 3. Recommendations	3-1
3.1. Technical State (TS) numbering	3-1
3.2. Date and time setting	3-1
3.3. Firmware recovery	3-1
Chapter 4. Information	4-1
4.1. Boot option after a BIOS firmware update	4-1
4.2. SHCuser access restrictions	4-1
4.3. Installing Windows Server 2022	4-2
Chapter 5. Delivery content	5-1
5.1. Delivered items	5-1
5.2. Documentation	5-1
5.3. Platform firmware	5-1
5.4. Administration tools	5-2
Chapter 6. History of previous versions	6-1

Preface

This document gives information about all changes from the previous version.

It also gives information about restrictions, known problems and the associated workarounds.

Finally it lists the objects delivered in the Technical State and the features of the resources provided on the Resource and Documentation ISO file.

See The Bull support web site for the most up to date product information, documentation, firmware updates, software fixes and service offers:
<https://support.bull.com>

Chapter 1. Overview

1.1. Operating Systems (OS) versions

1.1.1. Red Hat Enterprise Linux

- RHEL 8.6
- RHEL 9.2

1.1.2. Microsoft Windows

Windows Server 2022

1.2. New features and changes

1.2.1. BIOS_SAR160

Fixed boot order:

1. PXE
2. USB
3. SSD

1.2.2. OMF_ORMB

- Added PCIe devices and SATA disks in the Server Hardware Console (SHC)
- Improved the algorithm managing the fans: the fans remain off when the server is in standby power mode.

1.3. Resolved issues

- The management of the KVM window has been improved.
- The event log list has been improved.
- The Help button in the SHC now works correctly.
- The admin user is now safeguarded.

Chapter 2. Known issues and restrictions

2.1. Modifying network settings

Issue

After modifying settings in the **Network settings** page of the Server Hardware Console (SHC) and clicking the **Save settings** button, a error message pops up: **Error saving network settings.**

Workaround

The pop-up message is incorrect: wait for about 40 seconds for the modified settings to be displayed.

2.2. Collecting logs

Issue / Restriction

From time to time, collecting a log fails because the log storage limit has been reached.

Workaround

Delete older logs to free storage space.

Chapter 3. Recommendations

3.1. Technical State (TS) numbering

The numbering of Technical States, TS xy.zz, changes as follows:

- An increase in x indicates that this TS provides new features. It is strongly recommended to install it in order to benefit from these features. It may also include fixes.
- An increase in y indicates a maintenance TS. It provides a set of fixes and it is recommended to install it. If a problem is reported on a previous TS, it is requested to move to the last such TS first before issuing a ticket.
- An increase in the minor number zz indicates a patched TS that fixes a specific issue. Installing it is not mandatory unless you may encounter this issue or it is declared as a hot fix that may affect most clients.

3.2. Date and time setting

It is recommended to use an NTP server to set the time and date. If the time and date are set manually, they will be reset to their default values after a BMC reboot.

See SHC Reference Guide for more information

3.3. Firmware recovery

It is strongly recommended to power off the system before initiating the BMC firmware recovery.

Chapter 4. Information

4.1. Boot option after a BIOS firmware update

After any BIOS firmware update, the boot option is reset to PXE. It is therefore necessary to change the boot option after the BIOS firmware update if PXE is not desired boot option.

4.2. SHCuser access restrictions

Operator users do not have access to the following pages in SHC:

- Reset to default
- Manage power usage
- Reboot BMC
- Date and time settings
- Rsyslog
- KVM settings
- Global settings

ReadUser users do not have access to the following pages in the SHC:

- KVM
- SOL console
- Reset to default
- Manage power usage
- Reboot BMC
- Date and time settings
- Rsyslog
- KVM settings
- Global settings

4.3. Installing Windows Server 2022

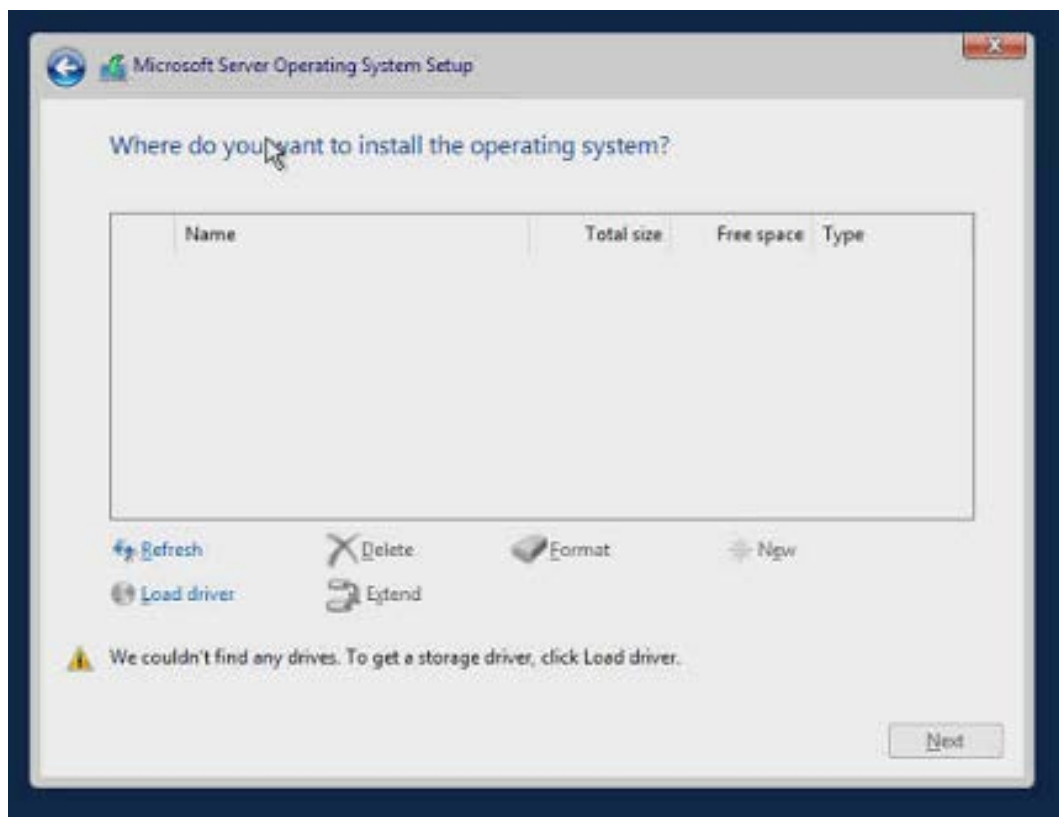
The Windows Server 2022 operating system (OS) can be installed on different storage configurations using the installation ISO image.

In some cases, it is necessary to load a driver to be able to access the storage devices.

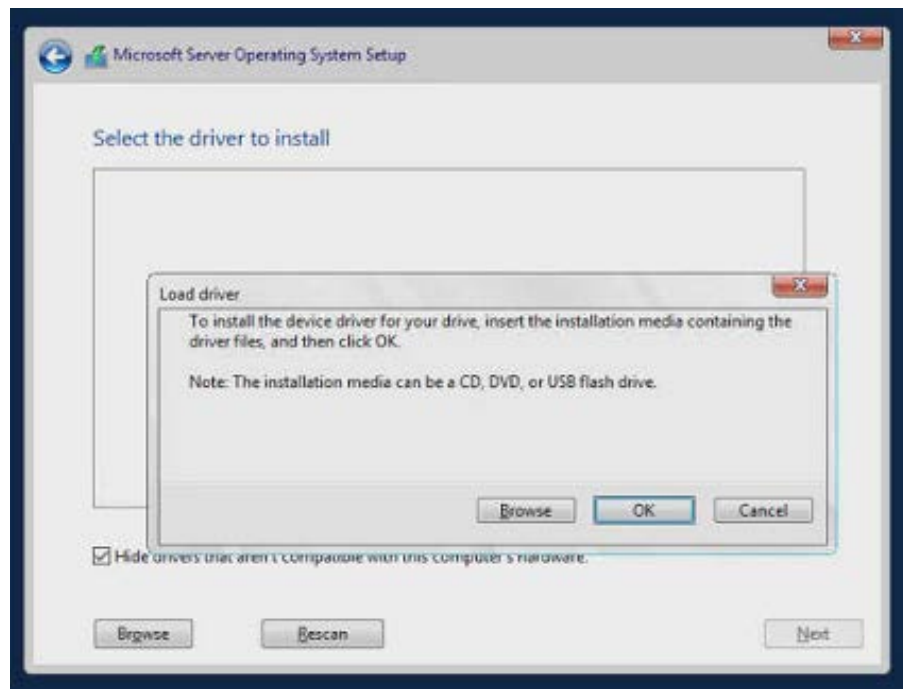
See The Bull support web site for the necessary drivers:
<https://support.bull.com>

Procedure

1. Click Load Driver on the following screen



2. Browse the location of the driver

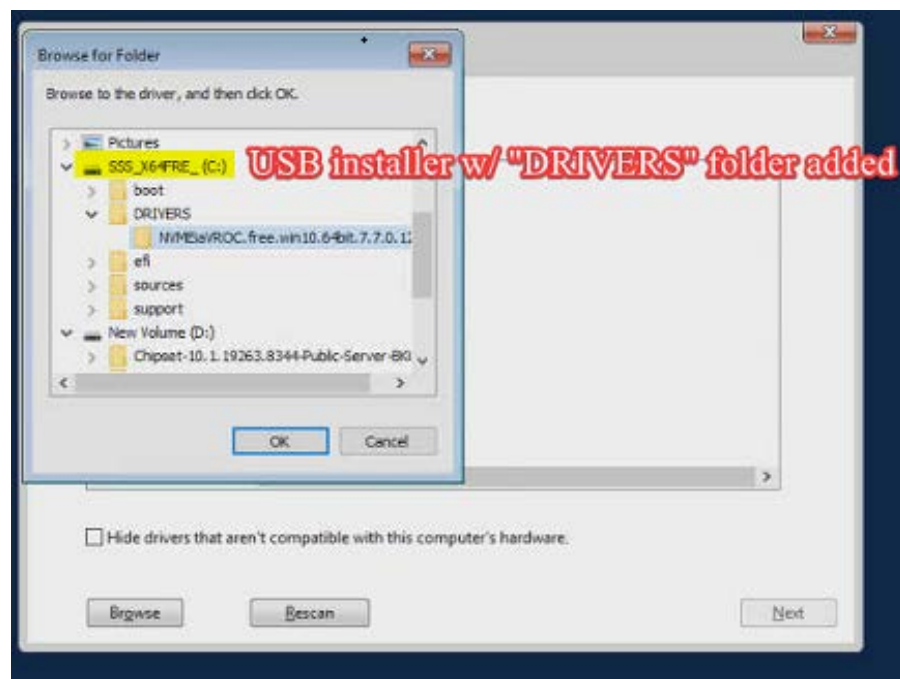


3. Select the driver

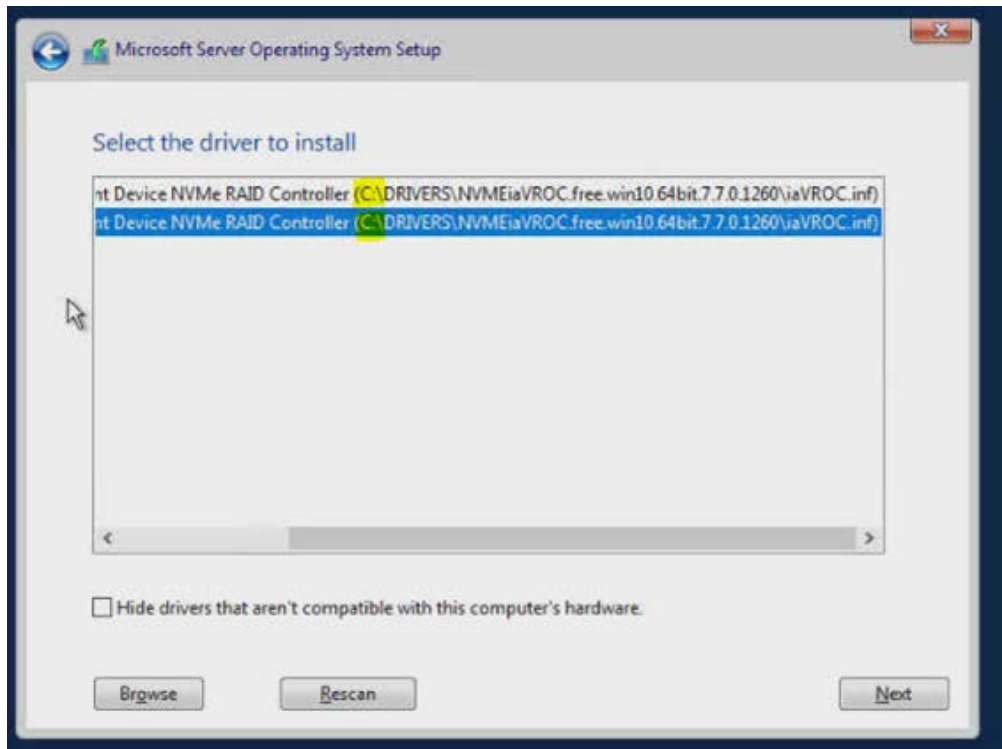
The driver can be copied to the installation media before starting, or to another USB drive.

Driver added to the installation media

1. Select the driver folder that is present on the Windows Installation USB drive.

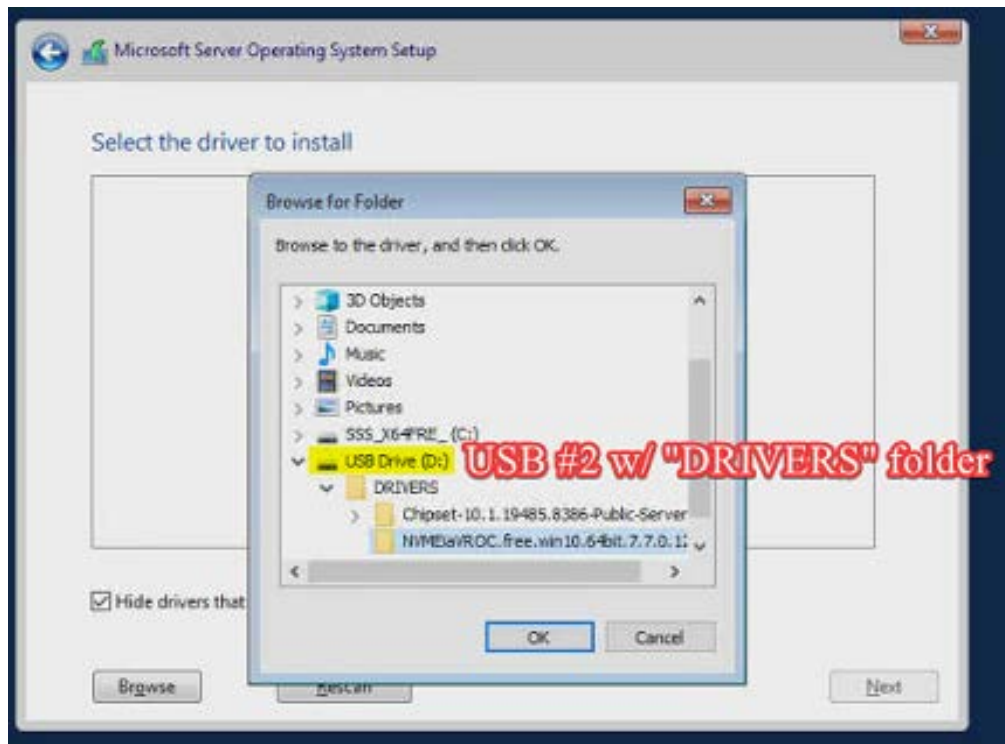


2. Select the driver to install.

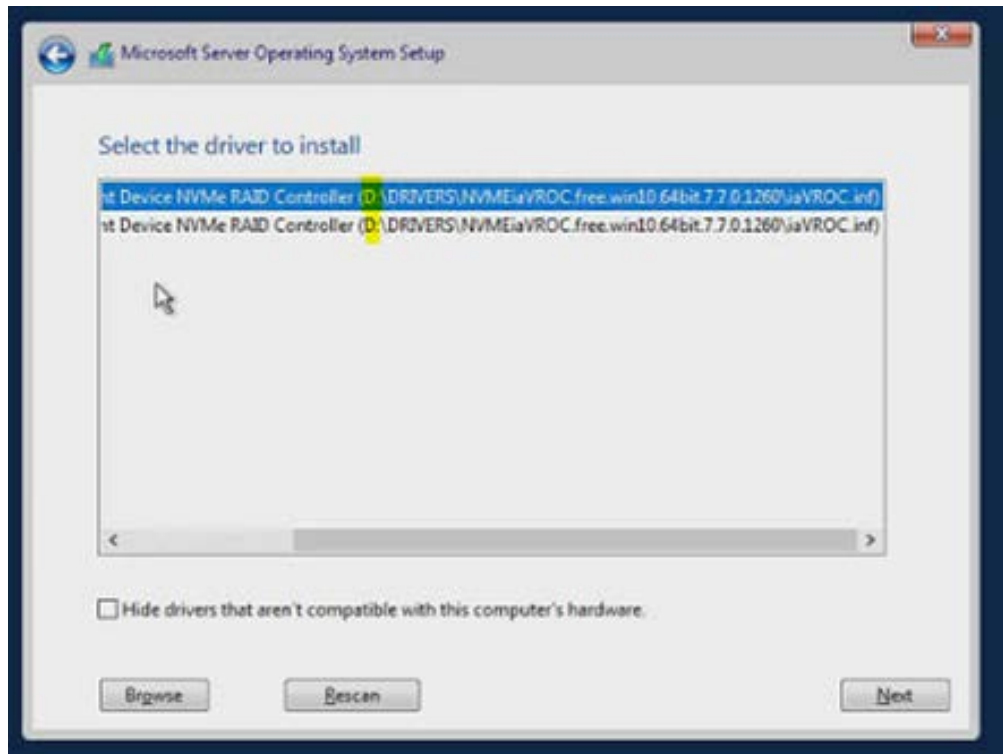


Driver on another USB drive

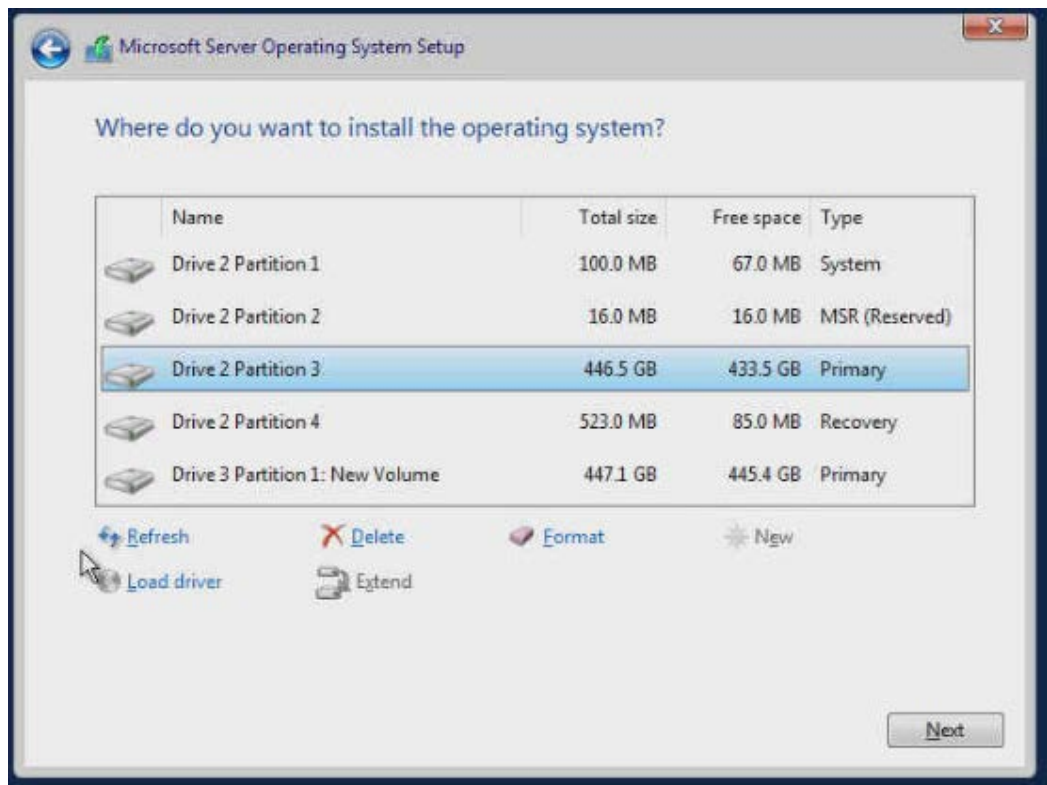
1. select the driver folder that is present on a separate drive.



2. Select the driver to install.



4. Select one of the NVMe drives present to continue installation



Chapter 5. Delivery content

Notes

- A new product row is highlighted in gray
 - A new version is highlighted in gray
-

5.1. Delivered items

Documentation, firmware and customer tools are delivered on the Resource and Documentation ISO file

5.2. Documentation

Name	Description	Version
BullSequana EX Customer Documentation Set	Complete documentation dedicated to the customer	02
BullSequana EX Field Documentation Set	Complete documentation dedicated to the field	02

5.3. Platform firmware

Name	Description	Version
BIOS_SAR160	BIOS firmware for fourth generation Intel® Xeon® Scalable processors	160.78.04 build 012
FPGA_ORMB	SPI slave interface with BMC for register access CPU Power Sequencing	1.E.0.0
I225_ETH_CONTROLLER_ORMB	PROG for I225 for ORMB host Ethernet Port	1.0
OMF_ORMB	BMC Firmware for BullSequana EX platform	159.00 build 1433
VR_PVCCD_HV_CPU_ORMB	PROG for PVCCD HV CPU VR	1.0
VR_PVCCIN_and_PVCCFA_EHV_FIVRA_CPU_ORMB	PROG for PVCCIN & PVCCFA EHV FIVRA CPU VR	1.0
VR_PVC8INFAON_and_PVCCFA_EHV_CPU_ORMB	PROG for PVCCINFAON & PVCCFA EHV CPU VR	1.0
X710_10G_ETH_CONTROLLER_ORMZET	PROG for X710 for ORMZET Ethernet Port	1.0

5.4. Administration tools

Name	Decription	Version
Edge_MONGUI	Edge_MONGUI Zabbix templates and scripts allow administrators to monitor multiple servers.	1.0.0

Chapter 6. History of previous versions

TS 024.01 (December 2023)

First release

