

EVIDEN

BullSequana EX & AI

TS 044.03 Release Note

The following copyright notice protects this book under Copyright laws which prohibit such actions as, but not limited to, copying, distributing, modifying, and making derivative works.

Copyright ©Bull SAS 2025, part of Eviden group. Eviden is a registered trademark of Eviden SAS. This document, or any part of it, may not be reproduced, copied, circulated and/or distributed nor quoted without prior written approval from Bull SAS.

Trademarks and Acknowledgements

We acknowledge the right of proprietors of trademarks mentioned in this manual.

All brand names and software and hardware product names are subject to trademark and/or patent protection.

Quoting of brand and product names is for information purposes only and does not represent trademark and/or patent misuse.

Hardware

March 2025

**Eviden
30 bis rue du Nid de Pie
49000 Angers
FRANCE**

The information in this document is subject to change without notice. Eviden will not be liable for errors contained herein, or for incidental or consequential damages in connection with the use of this material.

Table of contents

Preface	p-1
Chapter 1. Overview	1-1
1.1. Operating Systems (OS) versions	1-1
1.1.1. Red Hat Enterprise Linux	1-1
1.1.2. Microsoft Windows	1-1
1.2. New features and changes	1-2
1.2.1. OneBSM	1-2
1.2.2. Documentation	1-2
1.2.3. BIOS_ESR160	1-2
1.3. Resolved issues	1-3
Chapter 2. Known issues and restrictions	2-1
2.1. Collecting logs	2-1
2.2. BIOS settings	2-1
2.3. Network settings	2-1
2.4. BIOS password	2-1
2.5. Image mounted on virtual media	2-2
2.6. VMD parameters in the log collection	2-3
Chapter 3. Recommendations	3-1
3.1. Technical State (TS) numbering	3-1
Chapter 4. Information	4-1
4.1. Location of the Microsoft Windows COA label, if ordered	4-1
4.2. USB boot activation	4-2
4.3. PXE boot activation	4-4
Chapter 5. Delivery content	5-1
5.1. Delivered items	5-1
5.2. Documentation	5-1
5.3. Platform firmware	5-1
5.4. Administration tools	5-2
Chapter 6. History of previous versions	6-1
6.1. TS 044.01 (September 2024)	6-1
6.2. TS 034.02 (July 2024)	6-1

6.3. TS 024.01 (December 2023)6-2

Preface

This document gives information about all changes from the previous version.

It also gives information about restrictions, known problems and the associated workarounds.

Finally it lists the objects delivered in the Technical State and the features of the resources provided on the Resource and Documentation ISO file.

See The Bull support web site for the most up-to-date product information, documentation, firmware updates, software fixes and service offers:
<https://support.bull.com>

Chapter 1. Overview

1.1. Operating Systems (OS) versions

1.1.1. Red Hat Enterprise Linux

- RHEL 8.6
- RHEL 9.2

1.1.2. Microsoft Windows

Windows Server 2022

1.2. New features and changes

This Technical State (TS) 044.03 is a patched one compared to TS 044.01. It provides new releases of the BIOS and BMC firmware.

1.2.1. OneBSM

OneBSM console is a graphical management and monitoring system for the following servers:

- BullSequana EXR & AI100R, BullSequana EXD & AI100D

And also:

- BullSequana SH
- BullSequana SA

OneBSM will manage and monitor all the mentionned BullSequana servers detected on the local network. BullSequana servers can be viewed within OneBSM individually or grouped together according to server type. The interface is dynamic according to server type.

1.2.2. Documentation

Server names have been changed in the documentation in this way:

- BullSequana EXD & AI100D
- BullSequana EXR & AI100R

1.2.3. BIOS_ESR160

- PXE boot is disabled by default
- USB boot is disabled by default

See [Chapter 4. Information](#) for details of how to activate these parameters.

1.3. Resolved issues

▪ Model and part number for M.2 NVMe disk

Model and Part number values for M.2 NVMe disks are not returned by the SHC HW information page, nor by Redfish. The SHC HW information page description is up-to-date in the documentation.

See	SHC Reference Guide
------------	---------------------

▪ BIOS password

Disable BIOS password is now possible with curl command:

```
export bmc=admin:OpenBmc*@xx.xx.xx.xx curl -k -X POST -d '{"PasswordName": "AdminPassword"}'  
https://${bmc}/redfish/v1/Systems/system/Bios/Actions/Bios.DisablePassword/{}'
```

Chapter 2. Known issues and restrictions

2.1. Collecting logs

Issue

From time to time, collecting a log fails because the log storage limit has been reached.

Workaround

Delete older logs to free storage space.

2.2. BIOS settings

Issue

When modifying BIOS settings via BIOS interface, rebooting and then updating the BIOS firmware, the modified BIOS settings are no longer set.

Workaround

After updating the BIOS firmware, restart the server (full boot). Then restart again and check the BIOS settings: the modified values are set correctly.

2.3. Network settings

Enabling/Disabling of the parameters Use domain name, Use DNS servers, Use NTP servers does not work correctly. An error pop-up appears and after refreshing the page, the parameter value has not been modified.

2.4. BIOS password

Issue

After the BIOS firmware update, the BIOS password is no longer set.

Workaround

Set the BIOS password again.

2.5. Image mounted on virtual media

Issue

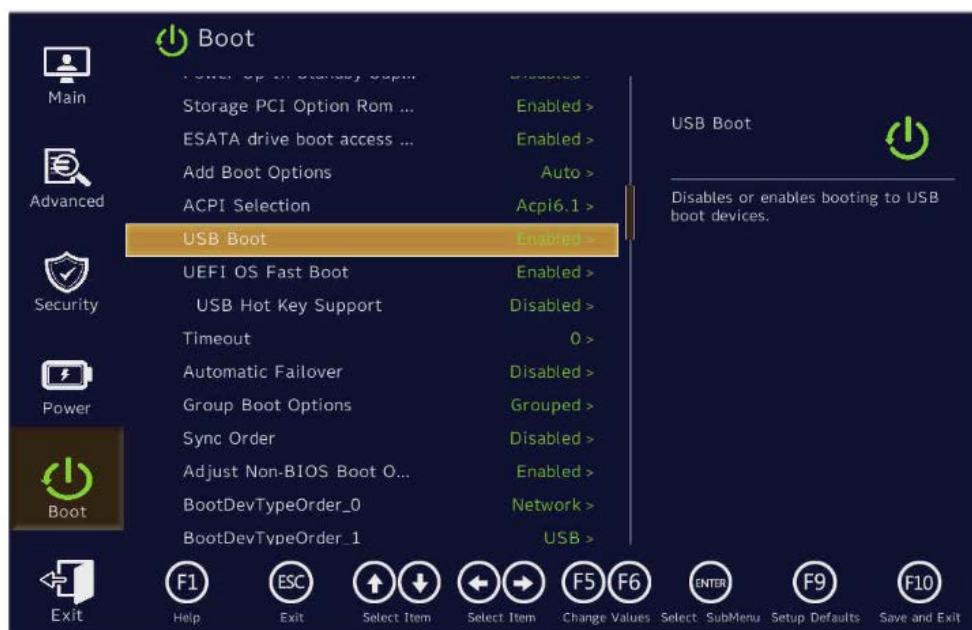
An image mounted on virtual media is not always detected in the boot manager menu.

Workaround

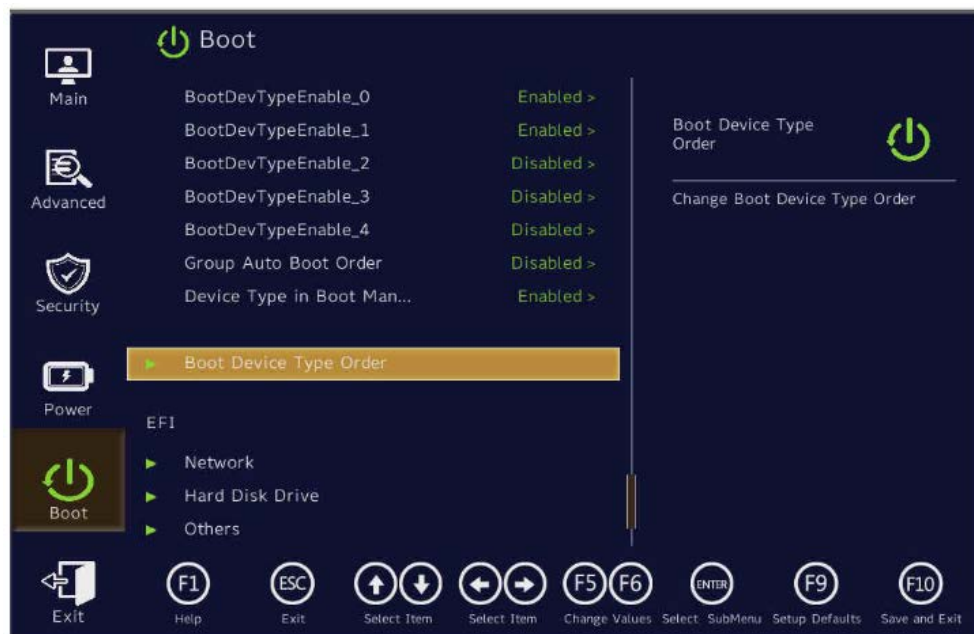
Enable USB boot in the BIOS menu to obtain the installed image with virtual media in the boot manager.

Perform the following operations before accessing the boot manager menu:

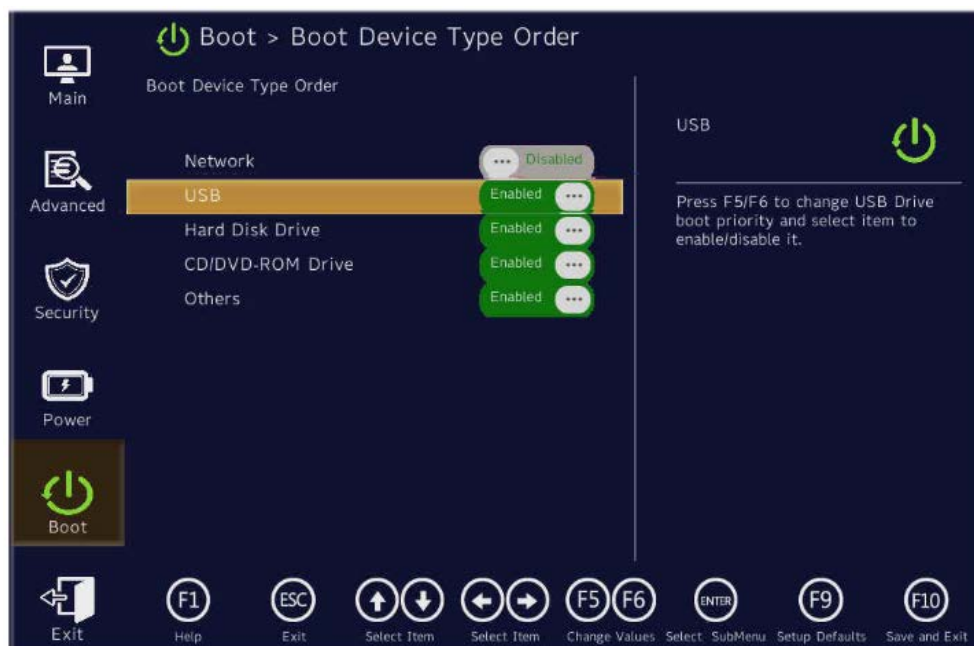
1. Access the BIOS interface.
2. Launch the Setup Utility.
3. Select Boot.
4. Enable USB boot.



5. Select Boot Device Type Order.



6. Enable USB.



7. Press F10.

2.6. VMD parameters in the log collection

After modifying the Bios Settings, the modified VMD parameters are not displayed with the correct values in the ModifiedAttributes.json file, but with the default values.

Chapter 3. Recommendations

3.1. Technical State (TS) numbering

The numbering of Technical States, TS xy.zz, changes as follows:

- An increase in x indicates that this TS provides new features. It is strongly recommended to install it in order to benefit from these features. It may also include fixes.
- An increase in y indicates a maintenance TS. It provides a set of fixes and it is recommended to install it. If a problem is reported on a previous TS, it is requested to move to the last such TS first before issuing a ticket.
- An increase in the minor number zz indicates a patched TS that fixes a specific issue. Installing it is not mandatory unless you may encounter this issue or it is declared as a hot fix that may affect most clients.

Chapter 4. Information

4.1. Location of the Microsoft Windows COA label, if ordered

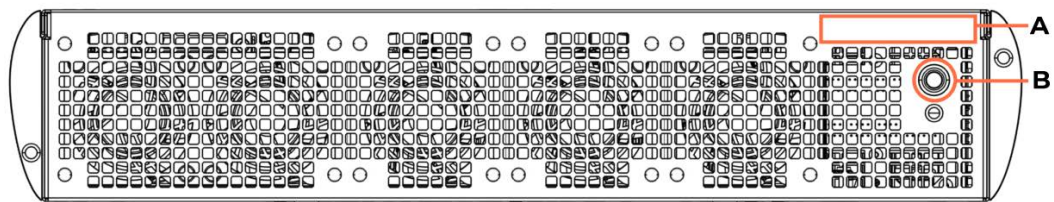
The Microsoft Windows COA label contains the Product Key of the Windows Server license and proof of purchase of the Windows 10 license.

BullSequana EXD & AI100D

The Microsoft Windows COA label is located on the front of the server (A), above the power button (B).



Front view



BullSequana EXR & AI100R

The Microsoft Windows COA label is located under the server, near the identification label.

4.2. USB boot activation

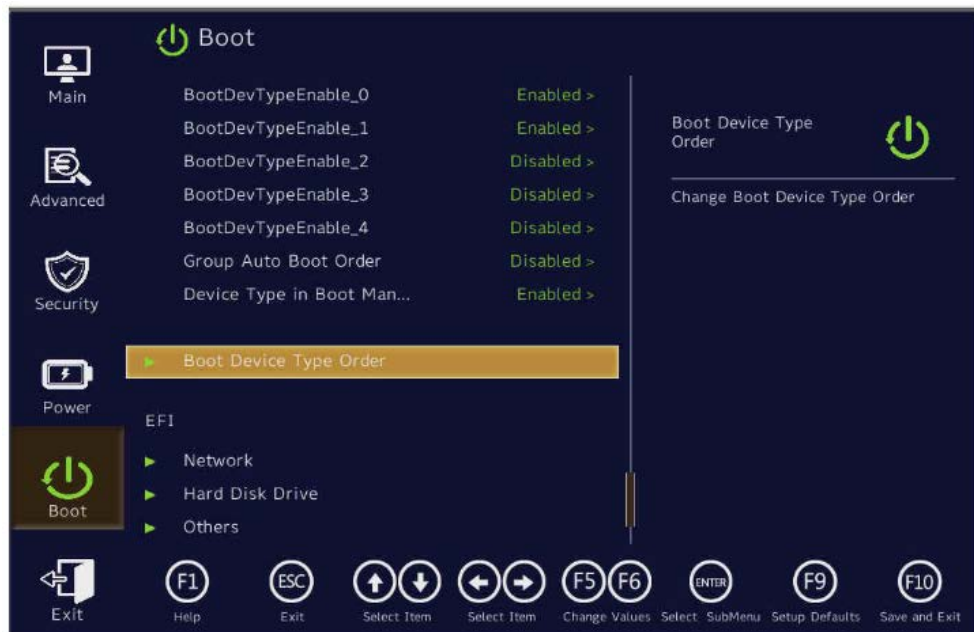
After BIOS firmware update, USB boot option is disabled by default.

To activate it, perform the following operations.

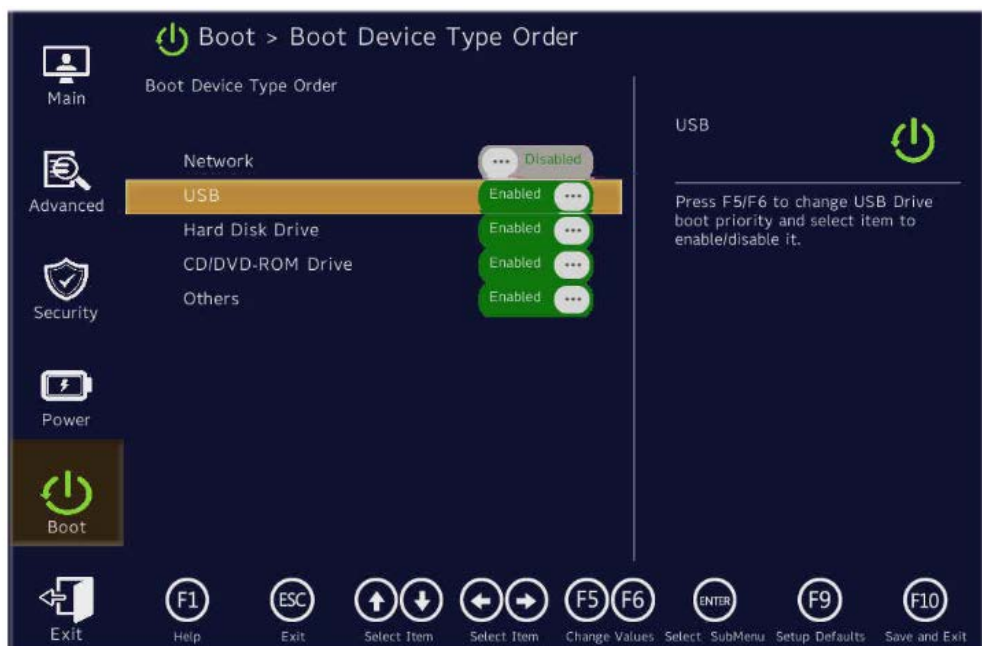
1. Access the BIOS interface.
2. Launch the Setup Utility.
3. Select Boot.
4. Enable USB boot.



5. Select Boot Device Type Order.



6. Enable USB.



7. Press F10.

4.3. PXE boot activation

After BIOS firmware update, PXE boot option is disabled by default.

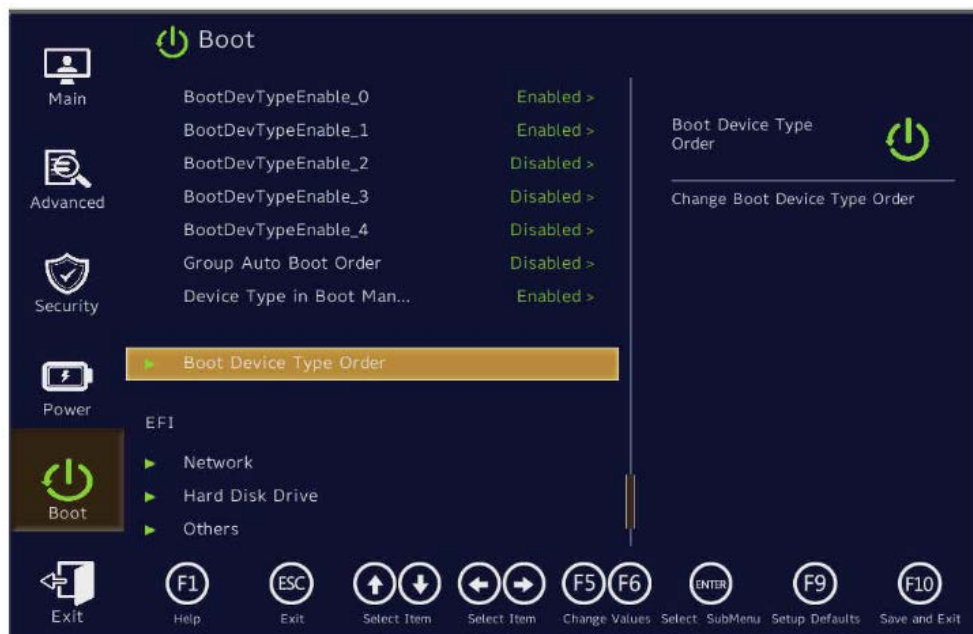
To activate it, perform the following operations.

1. Access the BIOS interface.
2. Launch the Setup Utility.
3. Select Boot.
4. Enable Network Stack

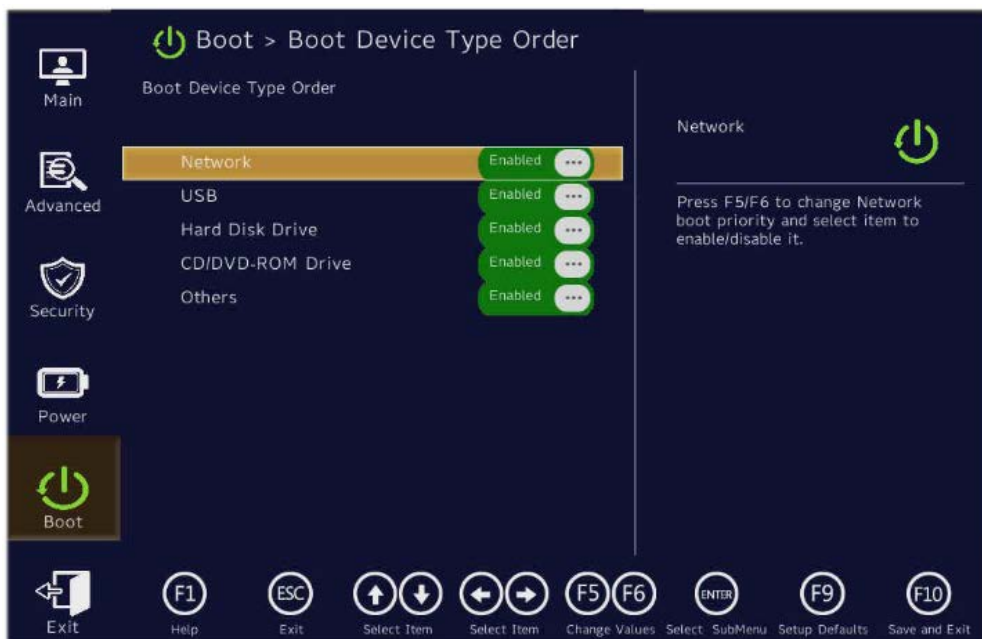


5. Set PXE Boot Capability to UEFI IPv4 or UEFI IPv6 according to the network configuration.

6. Select Boot Device Type Order.



7. Enable Network



8. Press F10.

Chapter 5. Delivery content

Notes

- A new product row is highlighted in gray
 - A new version is highlighted in gray
-

5.1. Delivered items

Documentation, firmware and customer tools are delivered on the Resource and Documentation ISO file.

OneBSM console firmware is available on the Bull support website:

<https://support.bull.com>

5.2. Documentation

Name	Description	Version
BullSequana EX & AI Customer Documentation Set	Complete documentation dedicated to the customer	05
BullSequana EX & AI Field Documentation Set	Complete documentation dedicated to the field	05

5.3. Platform firmware

Name	Description	Version
BIOS_ESR160	BIOS firmware for fourth and fifth generation Intel® Xeon® Scalable processors	160.40.04 build 010
FPGA_ORMB	SPI slave interface with BMC for register access CPU Power Sequencing	1.E.0.0
I225_ETH_CONTROLLER_ORMB	PROG for I225 for ORMB host Ethernet Port	1.0
OMF_ORMB	BMC Firmware for BullSequana EX & AI platform	174.02 build 0006
VR_PVCCD_HV_CPU_ORMB	PROG for PVCCD HV CPU VR	1.0

Name	Description	Version
VR_PVCCIN_and_PVCCFA_EHV_FIVRA_CPU__ORMB	PROG for PVCCIN & PVCCFA EHV FIVRA CPU VR	1.0
VR_PVC8INFAON_and_PVCCFA_EHV_CPU__ORMB	PROG for PVCCINFAON & PVCCFA EHV CPU VR	1.0
X710_10G_ETH_CONTROLLER_ORMZET	PROG for X710 for ORMZET Ethernet Port	1.0

5.4. Administration tools

Name	Description	Version
OneBSM	OneBSM manages and monitors all the BullSequana servers (BullSequana EX & AI; BullSequana SA; BullSequana SH) detected on the local network.	1.0.0

Chapter 6. History of previous versions

6.1. TS 044.01 (September 2024)

New features and changes

BIOS_ESR160

- Added support for Emerald Rapids CPUs
- Siemens specific LAN naming interface

Resolved issues

- Modifying settings in the **Network settings** page of the Server Hardware Console (SHC) works correctly.

6.2. TS 034.02 (July 2024)

New features and changes

BIOS_SAR160

Fixed boot order:

1. PXE
2. USB
3. SSD

OMF_ORMB

- Added PCIe devices and SATA disks in the Server Hardware Console (SHC)
- Improved the algorithm managing the fans: the fans remain off when the server is in standby power mode.

Resolved issues

- The management of the KVM window has been improved.
- The event log list has been improved.
- The Help button in the SHC now works correctly.
- The admin user is now safeguarded.

6.3. TS 024.01 (December 2023)

First release

