

Release Note TS 024.02

The following copyright notice protects this book under Copyright laws which prohibit such actions as, but not limited to, copying, distributing, modifying, and making derivative works.

Copyright ©Bull SAS 2020

Printed in France

Trademarks and Acknowledgements

We acknowledge the right of proprietors of trademarks mentioned in this manual.

All brand names and software and hardware product names are subject to trademark and/or patent protection.

Quoting of brand and product names is for information purposes only and does not represent trademark and/or patent misuse.

Hardware

August 2020

**Bull Cedoc
357 avenue Patton
BP 20845
49008 Angers Cedex 01
FRANCE**

The information in this document is subject to change without notice. Bull will not be liable for errors contained herein, or for incidental or consequential damages in connection with the use of this material.

Table of Contents

Preface	p-1
Chapter 1. Overview	1-1
1.1. Operating Systems Versions	1-1
1.1.1. VMware ESXi	1-1
1.1.2. Linux	1-1
1.1.3. Windows	1-2
1.2. New Features and Changes	1-3
1.3. Resolved Issues	1-4
1.3.1. All models	1-4
1.3.2. BullSequana S1600 Server	1-4
Chapter 2. Known Restrictions and Issues	2-1
2.1. Platform Restrictions and Issues	2-1
2.1.1. Server Hardware Console (SHC) Restrictions	2-1
2.1.2. Global Firmware Update	2-1
2.1.3. Global Firmware Upgrade Ineffective on UBox Firmware	2-1
2.1.4. Updating the Baseboard Management Controller (BMC) firmware	2-3
2.1.5. Updating the BIOS Firmware	2-3
2.1.6. UBox FPGA Update	2-3
2.1.7. LMB Firmware Recovery	2-4
2.1.8. Serial On LAN (SOL) Activation	2-4
2.1.9. LDAP Authentication	2-4
2.1.10. Mounting Virtual Media Files from the Remote Console	2-4
2.1.11. Locating an FDB Disk	2-4
2.1.12. Memory module exclusion	2-5
2.1.13. LMB Sensors	2-5
2.1.14. BMC Reboot Loop after Shutdown	2-5
2.1.15. Shutdown Command Ineffective	2-5
2.1.16. PCIe Hot-plug	2-6
2.1.17. Hot Plug of the Broadcom P210tp PCI card	2-6
2.1.18. Module Power Supply Unit (PSU) Redundancy in 100-140V AC Range	2-6
2.2. Redfish Restrictions and Issues	2-7
2.2.1. Restrictions	2-7
2.2.2. Issues	2-7
2.3. Software Restrictions and Issues	2-8
2.3.1. DCPMM Memory modules	2-8
2.3.2. Installing and Booting from DCPMM Memory Modules	2-8
2.3.3. Incorrect Allocation of DCPMM Name Spaces to numa Node	2-8
2.3.4. Using SR-IOV	2-8
2.3.5. Powering Off from the Server Hardware Console (SHC)	2-8

Chapter 3. Delivery Content	3-1
3.1. Delivered items	3-1
3.2. Documentation	3-1
3.3. Platform Firmware	3-1
3.4. Adapter Firmware	3-4
3.5. Customer Tools	3-5
3.6. Management Information Base (MIB)	3-5
3.7. Bull Admin Tools	3-6
Chapter 4. Recommendations	4-1
4.1. Updating to Technical State 24.02	4-1
4.2. Updating to Technical State 24.01	4-1
4.3. Downgrading from Technical State 24.01	4-1
4.4. Downgrading from Technical State 22.02	4-1
4.5. Updating to Technical State 21.02 or 21.03	4-2
4.6. Downgrading from Technical State 21.02 or 21.03	4-2
4.7. Updating from older Technical States	4-2
4.8. Updating Firmware Using iCare	4-3
4.9. Baseboard Management Controller (BMC) Firmware Update	4-3
4.10. FPGA_CPB Update	4-3
4.11. Broadcom LSI 94XX board firmware	4-3
4.12. CVE-2013-4786 IPMI v2.0 vulnerability	4-3
4.13. Copying the default BIOS settings file	4-3
4.14. Linux Kernel Boot Parameters	4-4
4.15. Ensuring Efficient Firmware Handling of Memory Failures	4-4
4.16. Changing BIOS Settings	4-5
4.17. Performance Parameters	4-6
4.17.1. BullSequana S200 to S800 Glueless Servers	4-6
4.17.2. BullSequana S1600 servers	4-6
4.18. Network Adapters and Switches Firmware	4-7
4.19. Mixed Memory Configurations for SAP HANA	4-7
4.19.1. BullSequana S200 to S800 Glueless Servers	4-7
4.19.2. BullSequana S1600 servers	4-8
4.20. Intel® Optane™ DCPMM for SAP HANA	4-8
4.21. Servicing Memory modules	4-9
4.22. Downgrading the DCPMM memory module firmware	4-9
4.23. Non Maskable Interrupt	4-9
4.24. MicroSD cards in Internal Dual RAID board (URS)	4-9

Chapter 5. Information	5-1
5.1. Enabling Trusted Platform Module (TPM)	5-1
5.2. Displaying Firmware Versions	5-2
5.3. PEB/PEBS Ethernet Firmware	5-2
5.4. Redfish Managers URI Resources	5-3
5.5. Displaying the Boot Options with Redfish	5-3
5.6. PCIe Blade Population Rules	5-4
5.7. Disabling Ethernet Ports	5-6
5.8. GPUs with VMware	5-6
Chapter 6. History of Previous Versions	6-1
6.1. AI models	6-1
6.1.1. TS 024.01 (June 2020)	6-1
6.1.2. TS 022.04 (August 2020)	6-5
6.1.3. TS 022.03 (January 2020)	6-6
6.1.4. TS 022.02 (November 2019)	6-7
6.2. BullSequana S200 to S800 Glueless Servers	6-10
6.2.1. TS 021.03 (September 2019)	6-10
6.2.2. TS 021.02 (July 2019)	6-11
6.2.3. TS 020.03 (May 2019)	6-14
6.2.4. TS 020.02 (March 2019)	6-15
6.2.5. TS 007.02 (November 2018)	6-17
6.2.6. TS 006.02 (August 2018)	6-20
6.2.7. TS 005.04 (June 2018)	6-22
6.2.8. TS 005.03 (May 2018)	6-23
6.2.9. TS 005.02 (March 2018)	6-24
6.2.10. TS 004.02 (January 2018)	6-26
6.2.11. TS 004.01 (December 2017)	6-27
6.3. BullSequana S1600 servers	6-28
6.3.1. TS 016.02 (September 2019)	6-28
6.3.2. TS 016.01 (August 2019)	6-29
6.3.3. TS 015.01 (June 2019)	6-31
6.3.4. TS 014.01 (April 2019)	6-33

Preface

This document gives information about all changes from the previous version.

It also gives information about restrictions, known problems and the associated workarounds.

Finally it lists the objects delivered in the Technical State and the features of the resources provided on the Resource and Documentation DVD.

Chapter 1. Overview

Important To fully address the Intel Meltdown/Spectre security alert, it is mandatory to update the Operating System.

1.1. Operating Systems Versions

1.1.1. VMware ESXi

Note Available on the Bull Support Website: <https://support.bull.com>

BullSequana S200 to S800 glueless servers

- ESXi 6.5u3 build 14990892 or higher
- ESXi 6.7u3 build 15018017 or higher

For certification details check:

- Intel® Xeon® 1st generation processors

<https://www.vmware.com/resources/compatibility/search.php?deviceCategory=server&details=1&keyword=sequana&cpuSeries=122>

- Intel® Xeon® 2nd generation processors

<https://www.vmware.com/resources/compatibility/search.php?deviceCategory=server&details=1&keyword=sequana&cpuSeries=129>

BullSequana S1600 servers

VMware ESXi is not supported on BullSequana S1600 servers yet.

1.1.2. Linux

1.1.2.1. Red Hat

BullSequana S200 to S800 glueless servers

Intel® Xeon® 1 st generation processors	Intel® Xeon® 2 nd generation processors	Intel® Xeon® 2 nd generation processors & Intel® DCPMM
<ul style="list-style-type: none">• RHEL 8.1: All models• RHEL 7.7: All models• RHEL 7.6: All models• RHEL 7.5: All models• RHEL 7.4: All models• RHEL 7.3: All models	<ul style="list-style-type: none">• RHEL 8.1: All models• RHEL 7.7: All models• RHEL 7.6: All models• RHEL 7.5: All models	<ul style="list-style-type: none">• RHEL 7.7: All models• RHEL 7.6: All models• RHEL 7.5: All models

BullSequana S1600 servers

- RHEL 7.7
- RHEL 7.6

1.1.2.2. Suse

BullSequana S200 to S800 glueless servers

Intel® Xeon® 1st generation processors	Intel® Xeon® 2nd generation processors	Intel® Xeon® 2nd generation processors & Intel® DCPMM
• SLES 12 SP3	• SLES 15 SP1	• SLES 15 SP1

BullSequana S1600 servers

- SLES 12 SP4

1.1.3. Windows

BullSequana S200 to S800 glueless servers

Windows Server 2019

Windows Server 2016 (with iaStorA.free.win8.64bit.4.3.0.1198 driver)

BullSequana S1600 servers

VMware ESXi is not supported on BullSequana S1600 servers yet.

1.2. New Features and Changes

This Technical State 24.02 is a patched one compared to the Technical State 24.01. It contains new releases of the following firmware.

CPLD_P_CPB

Adds issue fixes

EMM33_BMC

Fixes SHC security vulnerabilities

EMM34_LMC

Adds issue fixes

FPGA_CPB

Adds issue fixes

1.3. Resolved Issues

This release fixes the following issues.

1.3.1. All models

- **System shutdown with CATERR error**

In rare cases, the system shuts down and a CATERR error is signaled.

- **PCI boards link down**

In rare cases, the link of all the PCI boards goes down at the same time and the drivers of the PCI boards are unable to re-establish it.

- **Undetected PCI boards**

In rare cases, at power on, some PCI boards are not started up and therefore not detected by the system.

1.3.2. BullSequana S1600 Server

- **UNC shutdown**

In rare cases, the fan management algorithm reports an incorrect UNC temperature value (over 4000°C) and shuts down the UNC.

Chapter 2. Known Restrictions and Issues

2.1. Platform Restrictions and Issues

2.1.1. Server Hardware Console (SHC) Restrictions

All models

Microsoft Internet Explorer 11 is no longer supported. Use Mozilla Firefox or Google Chrome.

BullSequana S1600 servers

The following features are not yet available:

- Updating a module firmware from the SHC of a slave module
Use the Hardware Management CLIs to update the firmware.
- Updating Local Management Board (LMB) firmware (Clock, FPGA, LMC)
Use the Hardware Management CLIs to update the firmware.
- Collecting logs of LMC information
Use the Hardware Management CLIs to collect logs.
- Reset of the LMC
If a reset is necessary, use the Hardware Management CLIs:

```
bsmreset.sh -l level -m lanplus -H <IP> -u <user> -p <pwd> -a BMCreset -M 16
```

- Management of the LMB and UNB module identification LED

2.1.2. Global Firmware Update

Issue

During the global firmware update using iCare or the Hardware Management CLIs, the update of the FPGA_CPB firmware (MAIN_FPGA) may appear as failed.

Workaround

Check the firmware version and if it is incorrect, update the firmware individually.

2.1.3. Global Firmware Upgrade Ineffective on UBox Firmware

This section applies to BullSequana S1600 servers only.

Issue

The `bsmFwGlobalUpg` command has not effect on UBox firmware.

Workaround

Update the system using one of the following methods:

- Update firmware globally using iCare.

See [iCare Console Reference Guide](#) for more information

- Update firmware using the Hardware Management CLIs.

Note The following procedure explains how to update firmware to TS 24.01 versions. However, it may be adapted for TS 22 firmware versions.

1. Update the firmware of the modules globally using the `bsmFwGlobalUpg` command.

See Upgrade Guide for more information

2. Update each UBox firmware individually using the `bsmFWupg` command:

- a. LMC firmware:

```
bsmFWupg.sh -a upg -H <IP address> -u <user> -p <pwd> -E MC -d /tmp/TS24 -F  
EMM34_LMC_341500_0570.bin -M 16
```

- b. MAIN_FPGA1 firmware

```
bsmFWupg.sh -a upg -H <IP address> -u <user> -p <pwd> -E MAIN_FPGA1 -d /tmp/TS24 -F  
FPGA_LMB_Multi_Image_wub_0_9_1_0.emm -M 16
```

- c. MAIN_FPGA2 firmware

```
bsmFWupg.sh -a upg -H <IP address> -u <user> -p <pwd> -E MAIN_FPGA2 -d /tmp/TS24 -F  
FPGA_LMB_Mngt_Image_wub_0_3_2_0.emm -M 16
```

- d. CPLD firmware

```
bsmFWupg.sh -a upg -H <IP address> -u <user> -p <pwd> -E CPLD -d /tmp/TS24 -F  
CPLD_LMB_Image_wub_0_5_0_0 -M 16
```

- e. UNB0_FPGA firmware

```
bsmFWupg.sh -a upg -H <IP address> -u <user> -p <pwd> -E UNB0_FPGA -d /tmp/TS24 -F  
FPGA_UNB_Image_wub_0_8_0_0.emm -M 16
```

- f. UNB1_FPGA firmware

```
bsmFWupg.sh -a upg -H <IP address> -u <user> -p <pwd> -E UNB1_FPGA -d /tmp/TS24 -F  
FPGA_UNB_Image_wub_0_8_0_0.emm -M 16
```

- g. UNB2_FPGA firmware

```
bsmFWupg.sh -a upg -H <IP address> -u <user> -p <pwd> -E UNB2_FPGA -d /tmp/TS24 -F  
FPGA_UNB_Image_wub_0_8_0_0.emm -M 16
```

- h. UNB3_FPGA firmware

```
bsmFWupg.sh -a upg -H <IP address> -u <user> -p <pwd> -E UNB3_FPGA -d /tmp/TS24 -F  
FPGA_UNB_Image_wub_0_8_0_0.emm -M 16
```

- i. BCM1_UPG firmware

```
bsmFWupg.sh -a upg -H <IP address> -u <user> -p <pwd> -E BCM1_UPG -d /tmp/TS24 -F  
ETH_SWITCH_LMB_Image_001.bin BCM1_UPG -M 16
```

- j. BCM2_UPG firmware

```
bsmFWupg.sh -a upg -H <IP address> -u <user> -p <pwd> -E BCM2_UPG -d /tmp/TS24 -F  
ETH_SWITCH_LMB_Image_001.bin BCM2_UPG -M 16
```

k. UNB0_CLK firmware

```
bsmFWupg.sh -a upg -H <IP address> -u <user> -p <pwd> -E UNB0_CLK -d /tmp/TS24 -F  
CLK_UNB_Image_003.bin -M 16
```

l. UNB1_CLK firmware

```
bsmFWupg.sh -a upg -H <IP address> -u <user> -p <pwd> -E UNB0_1LK -d /tmp/TS24 -F  
CLK_UNB_Image_003.bin -M 16
```

m. UNB2_CLK firmware

```
bsmFWupg.sh -a upg -H <IP address> -u <user> -p <pwd> -E UNB2_CLK -d /tmp/TS24 -F  
CLK_UNB_Image_003.bin -M 16
```

n. UNB3_CLK firmware

```
bsmFWupg.sh -a upg -H <IP address> -u <user> -p <pwd> -E UNB3_CLK -d /tmp/TS24 -F  
CLK_UNB_Image_003.bin -M 16
```

2.1.4. Updating the Baseboard Management Controller (BMC) firmware

Issue

Updating the BMC firmware results in the SHC Alert Setting Policies page being cleared.

Workaround

If you have modified the Alert Policies default settings, collect settings before the BMC update and restore them afterward.

2.1.5. Updating the BIOS Firmware

Issue

In some cases, at the end of the update of the BIOS firmware through the SHC, one of the following messages may be displayed:

- Please wait for the connection to be established.
- Get Updated Firmware Version Failed

Workaround

The update process has actually been successful and this message can be ignored. Refresh the page to come back to normal behavior.

2.1.6. UBox FPGA Update

This section applies to BullSequana S1600 servers only.

Issue

After the update of the UBox FPGA firmware, resetting the LMC is necessary.

Workaround

Reset the LMC by running the following command:

```
bsmreset.sh -l level -m lanplus -H <IP> -u <user> -p <pwd> -a BMCreset -M 16
```

2.1.7. LMB Firmware Recovery

This section applies to BullSequana S1600 servers only.

Restriction

LMB firmware recovery is not yet supported. If a recovery is needed, contact the support team.

2.1.8. Serial On LAN (SOL) Activation

Issue

When using the ipmi command "SOL activate" for Serial On LAN, there are issues with the keyboard.

Workaround

Open a ssh session on the SHC and use the terminal command.

2.1.9. LDAP Authentication

Issue

When the DNS server configured from the Network Settings page of the SHC belongs to the Active Directory domain, the LDAP authentication of the embedded controller fails without any error notification.

Workaround

Do not configure the DNS server before performing the LDAP authentication.

2.1.10. Mounting Virtual Media Files from the Remote Console

Issue

Installing software from a very large file via the Remote Console may fail with several medium errors reported.

Workaround

Use smaller files.

2.1.11. Locating an FDB Disk

Issue

The command designed to locate a failed FDB disk fails to switch on the disk's LED, making it impossible to locate it.

Workaround

See [Description Guide to locate FDB disks.](#)

2.1.12. Memory module exclusion

This section applies to BullSequana S1600 servers only.

Issue

After having excluded memory modules from a slave module, booting is not possible anymore.

Workaround

When excluding memory modules is necessary, memory exclusion must be symmetrical between both memory controllers (iMC) of the processor (CPU). Otherwise booting will not be possible.

For example, if the memory modules in the L0 and L1 slots of CPU 1 need to be excluded, the memory modules in the H0 and H1 slots of CPU 1 must also be excluded.

See Description Guide for more information on memory module slots

2.1.13. LMB Sensors

This section applies to BullSequana S1600 servers only.

Issue

PSx Pin and Pout sensor threshold values are incorrect: Pin values are lower than Pout values.

Workaround

LMB sensor threshold values are not fully implemented yet and can be ignores.

2.1.14. BMC Reboot Loop after Shutdown

This section applies to BullSequana S1600 servers only.

Issue

In rare cases, after having shut the system down using the `shutdown -h now` command, powering the system back on may be impossible as the BMC keeps on rebooting.

Workaround

Perform an AC cycle to end the BMC reboot loop.

2.1.15. Shutdown Command Ineffective

This section applies to BullSequana S1600 servers only.

Issue

In rare case, the system may stay ON after running the `shutdown -h now` command.

Workaround

Perform a Force Power Off to power off the system.

2.1.16. PCIe Hot-plug

This section applies to BullSequana S1600 servers only.

Restriction

Hot-plugging PCIe blades is not fully supported on all Operating Systems (OS).

2.1.17. Hot Plug of the Broadcom P210tp PCI card

Restriction

Hot-plugging the Broadcom PCI card BCM 957416A4160C is not possible. Insert or remove the card only when the operating system is stopped.

2.1.18. Module Power Supply Unit (PSU) Redundancy in 100-140V AC Range

Restriction

When the PSU of the modules are plugged to mains with voltage between 100 and 140V, redundancy is only ensured for modules consuming less than 1000W.

2.2. Redfish Restrictions and Issues

2.2.1. Restrictions

LDAP authentication is only supported with Active Directory.

2.2.2. Issues

- **Disappearing properties in Accounts**

Account properties name and description take a string as value. Currently, strings with spaces are not correctly managed.

It is therefore recommended to only use strings without spaces.

- **Firmware update**

In some cases, the BIOS or FPGA_CPB firmware update is indicated as successful by redfish/UpdateService or/Task/1 but it has actually failed. This can be confirmed by checking the firmware version in the SHC.

2.3. Software Restrictions and Issues

2.3.1. DCPMM Memory modules

Restriction

- DCPMM memory modules are not supported on BullSequana S1600 servers yet.
- DCPMM Mixed Mode is supported only on BullSequana S200 to S800 glueless servers running RHEL 7.6 or higher.

2.3.2. Installing and Booting from DCPMM Memory Modules

Restriction

Installing and booting from DCPMM memory modules is only supported from RHEL 7.6 onwards.

2.3.3. Incorrect Allocation of DCPMM Name Spaces to numa Node

Issue

On a server running a RedHat prior to 7.6 with DCPMM memory modules configured in Application Direct mode, the `numactl` command returns an incorrect answer.

Workaround

Update to RHEL 7.6.

2.3.4. Using SR-IOV

Issue

On a BullSequana S400 or S800 server, attempting to assign the SR-IOV passthrough to a virtual machine fails, resulting in the following error message: *unsupported configuration: host does not support passthrough of host PCI devices*

Restriction

SR-IOV is not supported on Virtual Machines running SLES 12 SP2.

SR-IOV is not supported on BullSequana S1600 servers.

2.3.5. Powering Off from the Server Hardware Console (SHC)

Issue

On servers running RHEL, clicking the Power Off button available in the Power Management page of the SHC does not result in the complete shutdown of the system.

Workaround

To get a complete shutdown, use one of the following methods:

- From the SHC:
 - o. Perform a BMC reset. This makes the SHC Force Power Off available again.
 - p. Perform a Force Power Off.
- Perform a Force Power Off using the bsmppower CLI commands

For the system to successfully shutdown when using the SHC Power button Off, the Remote Console (RC) must be running and the Operating System (OS) must be configured to accept the power off request.

- With RHEL 7.3 and 7.5:
 - q. In the RHEL Graphical User Interface, go to Applications > Utilities > Tweak Tool > Power > Power button action.
 - r. Choose the Shutdown option.
- With RHEL 7.4:
 - a. Install the acpid package.
 - b. Replace `/etc/acpi/actions/power.sh` content with the following content:


```
#!/bin/sh
PATH=/usr/sbin:/usr/bin
shutdown -h now
```
- With RHEL 7.6, 7.7
 - a. In the RHEL Graphical User Interface, go to Applications > System tools > Settings > Power > Suspend & Power Button > When the Power Button is pressed.
 - b. Choose the Power Off option.

Chapter 3. Delivery Content

3.1. Delivered items

- Documentation, firmware and customer tools are delivered on the Resource and Documentation DVD
- BSMHW_NG and iCare are delivered on the Bull Administration Tools DVD
- VMware ESXi Installer is delivered, if ordered, on a bootable USB key
- The Atos High-end Plug-in for vSphere web client and the Microsoft SCOM Management Pack are available on the Bull support website:
<http://support.bull.com>

3.2. Documentation

Note (*) indicates a new version, (**) indicates a new item.

Name	Description	Version
BullSequana S Customer Documentation Portfolio	Complete documentation dedicated to the customer	13
BullSequana S Field Documentation Portfolio	Complete documentation dedicated to the field	12

3.3. Platform Firmware

Notes • (*) indicates a new version, (**) indicates a new item

- Intel® Xeon® 1st and 2nd generation processors now share the same BIOS firmware.
- There are two different images of the BIOS firmware: one compatible with the PEB board and the other with the PEBS board. Their versions are numbered as follows:
 - x=0 for PEBS
 - x=1 for PEB

The managing tools are configured to automatically select the adequate BIOS image.

- The FLASH_M3WEO firmware version always reads as (0.0.0) even if the firmware has been successfully updated to a more advanced version.
-

Name	Description	Version
Apache Pass	Firmware for Intel® Optane™ DC Persistent Memory (DCPMM)	01.2.0 build 5417
BIOS_PUR043	BIOS firmware for both first and second generation Intel® Xeon® Scalable processors	43.37.14 build x21

Name	Description	Version
CLK_UNB	Firmware image for the clock generator circuit on UNB boards	0.0.3
CPLD_IO_CPB	Flash image for the IO CPLD component on the CPB board	2.7.0.0
CPLD_LMB	Firmware image for the CPLD on the LMB board	0.5.0.0
CPLD_NBB	Flash image for the CPLD component on the NBB board	3.2.0
CPLD_P_CPB	Flash image for the CPLD component on the CPB board	2.5.0.1 (*)
EMM33_BMC	Baseboard Management Controller (BMC) firmware	33.51.01 build 0002 (*)
EMM34_LMC	Local Management Controller (LMC) firmware	34.16.01 build 0001 (*)
EMM_DEFAULT_BIOS_SETTINGS	Default BIOS settings file	1.12
ETH_SWITCH_LMB	Firmware image for the Ethernet switches on the LMB board	0.0.1
ESXi_6.5_BullSequana_S	VMware supervisor	6.5u3 build 14990892
ESXi_6.7_BullSequana_S	VMware supervisor	6.7u3 build 15018017
FPGA_CPB	FPGA firmware for the CPB board	3.1.4.0 (*)
FPGA_FLASH_M3WEO	Flash image for the embedded firmware of the sWitch Ethernet One Gigabit (WEO).	1.0.0
FPGA_LMB_Mngt	Management FPGA firmware for the LMB board	0.3.2.0
FPGA_LMB_Multi	Multimode FPGA for LMB board	0.9.1.0
FPGA_UNB	FPGA firmware for UNB boards	0.8.0.0
FLASH_M3WEO	FPGA image for the sWitch Ethernet One Gigabit (WEO)	2.0.0 (appears as 0.0.0)
FW_PEB	Flash image for the SPI 4Mbit 85MHz 8SOIC 256Byte per page	2.B.9
FW_PHY_PEBS	Flash image for the EEPROM 256KBIT 400KHZ 8SOIC	1.0.0
FW_URS	Flash for the SPI 4Mbit 75MHz 8SO	0.0.3

Name	Description	Version
UNC_PE	Processing engine microcode for UNC	1 build 20180808
UNC_PHY	PHY firmware for UNC	1 build 20180808
UNC_SBUS	SBUS firmware for UNC	0001 build 0x101A
UNC_SERDES	SERDES firmware for UNC	0041 build 0x105C
VR_AVDD_UNC0_UNB	Configuration file for memory voltage regulator on UNB boards	0.0.4
VR_AVDD_UNC1_UNB	Configuration file for memory voltage regulator on UNB boards	0.0.4
VR_AVDD_UNC2_UNB	Configuration file for memory voltage regulator on UNB boards	0.0.4
VR_AVDD_UNC3_UNB	Configuration file for memory voltage regulator on UNB boards	0.0.4
VR_DDR_UNC0_UNB	Configuration file for memory voltage regulator on UNB boards	0.0.3
VR_DDR_UNC1_UNB	Configuration file for memory voltage regulator on UNB boards	0.0.3
VR_DDR_UNC2_UNB	Configuration file for memory voltage regulator on UNB boards	0.0.3
VR_DDR_UNC3_UNB	Configuration file for memory voltage regulator on UNB boards	0.0.3
VR_VDD_UNC0_UNB	Configuration file for memory voltage regulator on UNB boards	0.0.4
VR_VDD_UNC1_UNB	Configuration file for memory voltage regulator on UNB boards	0.0.4
VR_VDD_UNC2_UNB	Configuration file for memory voltage regulator on UNB boards	0.0.4
VR_VDD_UNC3_UNB	Configuration file for memory voltage regulator on UNB boards	0.0.4

3.4. Adapter Firmware

Note (*) indicates a new version, (**) indicates a new item.

Name	Version
Broadcom_PCIe_BCM957416A4160C	214.0.253.1
Emulex_PCIe_LPe12002-M8	fw202a4 - UniversalBootCode1220a3 OneCommandManagerCLI 12.2.299.20
Emulex_PCIe_LPe31002-M6	12.2.299.14 OneCommandManagerCLI 12.2.299.20
Ethernet_Intel_I350-X520	23.5.2
INTEL_PCIe_OPA_HFI	10.4.2.0.7-110
LSI_MegaRaid_SAS_9361-16i	Package: 24.22.0-0045 Firmware: 4.740.00-8433
LSI_MegaRaid_SAS_9361-8i	Package: 24.21.0-0091 Firmware: 4.680.01-8446
LSI_MegaRAID_SAS_9460-16i	Package: 51.12.0-3027 (MR 7.12) Firmware: 5.120.00-2904
LSI_SAS_9300_8e	P16
LSI_SAS_9300-8i	16.00.01.00
LSI_SAS_9305-16i	15.00.00/8.35.00
Mellanox_ConnectX-4	12.24.1000
Mellanox_ConnectX-4Lx	14.25.1020
Mellanox_ConnectX-5	16.23.1020
QLogic_QL41112HLRJ	Package: 8.42.10.0-1 Firmware: 2.10.82
Qlogic_QL41262_HLCU_25Gb/s	8.40.30.0
SolarFlare_SFN8522	SF-103848 FW 4.15.5.1007-1 SF-107601 FW 8.0.3.1001-1

Note The firmware used for the Emulex_PCIe_LPe31002-M6 adapter is also used for the following adapters:

- Emulex_PCIe_Lpe16002-M6
- Emulex_PCIe_LPe31004-M6
- Emulex_PCIe_LPe32002-M6
- Emulex_PCIe_LPe32004-M6

3.5. Customer Tools

Note (*) indicates a new version, (**) indicates a new item.

Name	Description	Version
Plug_in_For_SCOM	A set of tools to allow monitoring of BullSequana S Series servers by Microsoft System Center Operations Manager (SCOM)	1.0.1 build 161
plug_in_for_vSphere_Web_Client	Atos High-end Server Plug-in for vSphere Web Client	3.0
EMM_REGS_DUMP	This set of files gives the list of registers to dump in CPU and FPGA devices in case of CATERR detection or of IPMI dump command.	1.1
EMM33_BMC_Bckp	The backup image of the Baseboard Management Controller (BMC) firmware.	33.14.00 build 2
mc-setup	A Linux Utility used to discover the embedded management board's MAC address and to change the embedded management board's IP address.	1.2.1 build 2
MceLog	A Linux tool dedicated to collect MCE logs on servers. This version is updated to fully support errors reported by the Intel® Xeon® Scalable processors.	158 build 50
psetup	A Windows Utility used to discover the embedded management board's MAC address and to change the embedded management board's IP-address.	1.2.4

3.6. Management Information Base (MIB)

Note (*) indicates a new version, (**) indicates a new item.

Name	Description	Version
MIB_bull_PlatformManagement	Defines Platform Management SNMP interfaces of Bull servers.	201807171200Z
MIB_PlatformEventTraps	The Platform Event Trap definition file. This MIB (Management Information Base) file is used by SNMP (Simple Network Management Protocol) managers to receive server hardware events.	2.3.8

3.7. Bull Admin Tools

Note (*) indicates a new version, (**) indicates a new item.

Name	Description	Version
BSMHW_NG	A set of prompt commands, based on free IPMI open source commands, used to manage server or device hardware. These commands can be used to return information and status and/ or to remotely control and configure server hardware.	1.5.15
Bull_Admin_Tools_VM_Appliance	An appliance that delivers Bull Administration tools on CentOS system.	4.0.0
iCare	A WEB application used for hardware unit maintenance. Both Linux and Windows versions are provided.	2.7.4

Chapter 4. Recommendations

4.1. Updating to Technical State 24.02

It is mandatory to update the system to TS 24.01, following the procedure described below, before updating to TS 24.02.

4.2. Updating to Technical State 24.01

Important Due to the introduction of signed firmware, it is mandatory to perform the operations described below in order to correctly update to TS 24.01.

Before updating the server firmware to TS 24.01, it is mandatory to:

1. Update to TS 22.02, 22.03 or 22.04
2. Update the EMM33_BMC_Bckp firmware

For each module, run the following command:

```
ipmi-oem -h <IP> -u <super> -p <pwd> Bull upgrade /tmp/TS24/EMM33_BMC_335100_0592.sign  
MC_RESTORE 0
```

In addition to updating the server firmware to TS 24.01, it is mandatory to update the EMM_REG_DUMP firmware:

1. Unzip the `EMM_REGS_DUMP_1.1.zip` file.
2. For each module, run the following commands:

```
bsmRegDump.sh -H <IP> -a config -f /tmp/TS24/EMM_REGS_DUMP_1.1/EMM_REGS_CPU_SKL_CSR  
bsmRegDump.sh -H <IP> -a config -f /tmp/TS24/EMM_REGS_DUMP_1.1/EMM_REGS_CPU_SKL_MSR  
bsmRegDump.sh -H <IP> -a config -f /tmp/TS24/EMM_REGS_DUMP_1.1/EMM_REGS_FPGA
```

4.3. Downgrading from Technical State 24.01

If downgrading from TS 24.01 is necessary, contact the support team.

4.4. Downgrading from Technical State 22.02

BullSequana S200 to S800 glueless servers

Downgrade all the firmware to their previous version using Firmware Global Upgrade.

```
bsmFwGlobalUpd.sh -H <IP> -u <user> -p <pwd> -a upg -D <customer_dvd_mount_point> -b
```

BullSequana S1600 servers

If downgrading from TS 22.02 is necessary, contact the support team.

4.5. Updating to Technical State 21.02 or 21.03

This section applies to BullSequana S200 to S800 glueless servers only.

Important TS 21.02 introduces a shared BIOS for Intel® Xeon® 1st and 2nd generation processors.

Firmware Global Upgrade is unaffected. Proceed as usual to update the server to TS 21.02.

4.6. Downgrading from Technical State 21.02 or 21.03

This section applies to BullSequana S200 to S800 glueless servers only.

Important TS 21.02 introduces a shared BIOS for Intel® Xeon® 1st and 2nd generation processors.

If downgrading to the previous TS is necessary, perform the following operations:

1. Individually downgrade the BIOS_PUR043 firmware to the BIOS_SKL040 or BIOS_CCL041 firmware according to the processor generation.
2. Downgrade all the other firmware to their previous version using Firmware Global Upgrade.

4.7. Updating from older Technical States

This section applies to BullSequana S200 to S800 glueless servers only.

Important Due to a change in the EMM33_BMC firmware's size between TS 05.04 and TS 06.02, its mandatory to update to TS 06.02 before updating to any later TS.

If the server is running a TS preceding 06.02, perform the following steps:

1. Update FULLY to TS 06.02.
2. Perform an AC cycle on ALL modules. For each module, perform the following steps:
 - a. Power off the module.
 - b. Unplug the power cords.
 - c. Wait until the power LEDs are off.
 - d. Plug in the power cords.
 - e. Power on the module.
3. Clear the Internet browser's cache before using the Server Hardware Console (SHC) for the first time.
4. Update to any later TS.

4.8. Updating Firmware Using iCare

When updating firmware through iCare, it is mandatory to use iCare 2.6.0 or later versions.

4.9. Baseboard Management Controller (BMC) Firmware Update

- It is strongly recommended to power off the system before updating the BMC firmware. Otherwise, some slave modules may be lost.
- If the PCIe slot 0 is not visible after updating the BMC firmware, do an AC/Off - AC/On to see the slot.

Note To avoid any issues with firmware update, it is strongly recommended to use the global firmware update feature available through iCare or the BSM CLI commands.

4.10. FPGA_CPB Update

It is mandatory to update the BMC firmware before updating the FPGA_CPB firmware.

Note To avoid any issues with firmware update, it is strongly recommended to use the global firmware update feature available through iCare or the BSM CLI commands.

4.11. Broadcom LSI 94XX board firmware

The firmware of these boards must be updated as follows:

Original firmware version	Update to version
14.00.00.00	14.00.02.00
13.00.00.00	13.01.00.00

4.12. CVE-2013-4786 IPMI v2.0 vulnerability

To address this vulnerability, it is strongly recommended to change the super default account username.

4.13. Copying the default BIOS settings file

The EMM_DEFAULT_BIOS_SETTINGS must be present on the server.

See Remote Hardware Management CLI Reference Guide for more information on how to copy the default BIOS settings file

4.14. Linux Kernel Boot Parameters

This section applies to BullSequana S1600 servers only.

To allow server boot, it is necessary to add or modify the following parameters to the `/etc/default/grub` file:

- `nmi_watchdog=0`
- `disable_mtrr_trim`
- `tsc=reliable`
- `DefaultTimeoutStartSec=900s`
- `DefaultTimeoutStopSec=900s`
- `intel_idle.max_cstate=1`
- `processor.max_cstate=1`
- `intel_pstate=disable`

4.15. Ensuring Efficient Firmware Handling of Memory Failures

BullSequana S servers have memory monitoring features built into their design (based on Intel® Predictive Failure Analysis), which are fully independent from operating system-based tools for collecting and reporting correctable and uncorrectable memory errors.

When running Linux, it is therefore recommended to disable the following features to avoid interference with error reporting tracked by the system's management:

- Error Detection And Correction (EDAC)
- the correctable error detection functionality of the kernel's Machine Check Event (MCE) handling

To disable EDAC, search and blacklist the EDAC modules.

To disable the MCE handling, set the boot parameter `mce=ignore_ce`. This boot parameter also disables logging of such events via `mcelog`.

4.16. Changing BIOS Settings

W083  **WARNING**

W083:

Do not change BIOS setup settings unless directed to do so by the support team.

W082  **WARNING**

W082:

These procedures are for advanced users only. Risk of system damage.

- To configure volMemMode to AUTO, use the following command:

```
bsmBiosSettings.sh -H <IP address> -u <user> -p <pwd> -a set -n 'MEM.volMemMode 2'
```

- To enable packet poisoning by default, use the following command:

```
bsmBiosSettings.sh -H <IP address> -u <user> -p <pwd> -a set -n 'SETUP.PoisonEn 1'
```

- To restore MEM.oppReadInWmm to AUTO, use the following command:

```
bsmBiosSettings.sh -H <IP address> -u <user> -p <pwd> -a set -n 'MEM.oppReadInWMM 2'
```

- To improve resilience against memory error, it is strongly recommended to enable Adaptive Double Device Data Correction (ADDDC). Use the following command:

```
bsmBiosSettings.sh -H <IP address> -u <user> -p <pwd> -a set -n 'MEM.ADDDCEn 1'
```

- To avoid the issue of insufficient throttling for memory modules due to MRC calculation on systems equipped with M386AAG40MMB-CVF - 128GB Samsung - 2933 Mhz memory modules, use the following command:

```
bsmBiosSettings.sh -H <IP address> -u <user> -p <pwd> -a set -n 'MEM.refreshMode 0'
```

Do not apply this setting if the system is not equipped with this particular model of memory module.

4.17. Performance Parameters

4.17.1. BullSequana S200 to S800 Glueless Servers

1. It is recommended to update the defaultbiossetup file to its latest version and to manually set the StaleAtoSEn value at least once:
 - a. Check the StaleAtoSEn value.

```
BsmBiosSettings.sh -H <IP> -u <user> -p <pwd> -a get -n 'UPI.StaleAtoSOptEn'
```

- b. Set the StaleAtoSEn value.

```
BsmBiosSettings.sh -H <IP> -u <user> -p <pwd> -a set -n 'UPI.StaleAtoSOptEn 1'
```

2. For systems that are running SAP Hana/SAP BW, except BullSequana S200 servers, some BIOS settings may be tuned to improve performance with Intel® Xeon® Scalable processors by disabling HW prefetchers and adjusting IRQ/RRQ threshold.

```
bsmBiosSettings.sh -H <IP> -u <user> -p <pwd> -a set -n 'CPU.DCStreamerPrefetcherEnable 0'  
bsmBiosSettings.sh -H <IP> -u <user> -p <pwd> -a set -n 'CPU.DCUIPPrefetcherEnable 0'  
bsmBiosSettings.sh -H <IP> -u <user> -p <pwd> -a set -n 'CPU.MlcSpatialPrefetcherEnable 0'  
bsmBiosSettings.sh -H <IP> -u <user> -p <pwd> -a set -n 'CPU.MlcStreamerPrefetcherEnable 0'  
bsmBiosSettings.sh -H <IP> -u <user> -p <pwd> -a set -n 'UPI.IrqThreshold 3'
```

4.17.2. BullSequana S1600 servers

1. It is recommended to update the defaultbiossetup file to its latest version and to manually set the StaleAtoSEn value at least once:
 - a. Check the StaleAtoSEn value.

```
BsmBiosSettings.sh -H <IP> -u <user> -p <pwd> -a get -n 'UPI.StaleAtoSOptEn'
```

- b. Set the StaleAtoSEn value.

```
BsmBiosSettings.sh -H <IP> -u <user> -p <pwd> -a set -n 'UPI.StaleAtoSOptEn 0'
```

2. For systems that are running SAP Hana/SAP BW, some BIOS settings may be tuned to improve performance by disabling HW prefetchers and adjusting IRQ/RRQ threshold.

```
./bsmBiosSettings.sh -H <IP> -u <user> -p <pwd> -a set -n 'CPU.DCStreamerPrefetcherEnable 0'  
./bsmBiosSettings.sh -H <IP> -u <user> -p <pwd> -a set -n 'CPU.DCUIPPrefetcherEnable 0'  
./bsmBiosSettings.sh -H <IP> -u <user> -p <pwd> -a set -n 'CPU.MlcSpatialPrefetcherEnable 0'  
./bsmBiosSettings.sh -H <IP> -u <user> -p <pwd> -a set -n 'CPU.MlcStreamerPrefetcherEnable 0'  
./bsmBiosSettings.sh -H <IP> -u <user> -p <pwd> -a set -n 'PM.WorkLdConfig 0'  
./bsmBiosSettings.sh -H <IP> -u <user> -p <pwd> -a set -n 'UPI.IrqThreshold 2'  
./bsmBiosSettings.sh -H <IP> -u <user> -p <pwd> -a set -n 'CPU.L2RfoPrefetchDisable 1'
```

4.18. Network Adapters and Switches Firmware

When selecting firmware and device driver update, be sure to select the one that is appropriate for your operating system and in line with the specifications of the external network infrastructure.

4.19. Mixed Memory Configurations for SAP HANA

4.19.1. BullSequana S200 to S800 Glueless Servers

Two specific configurations mixing memory modules are allowed under the following conditions:

- For SAP HANA only
- Using only authorized parts:

For first generation Intel® Xeon® Scalable processors	For second generation Intel® Xeon® Scalable processors
<ul style="list-style-type: none">• RDIMM 3DS 128 GB (Samsung M393AAK40B42-CWD) with RDIMM 3DS 64 GB (Samsung M393A8K40B22-CWD)• LRDIMM 64 GB (Samsung M386A8K40BM2-CTD) with LRDIMM 32 GB (Samsung M386A4K40BB0-CRC)	<ul style="list-style-type: none">• LRDIMM 128 GB (Samsung M386AAG40MMB-CVF) with LRDIMM 64GB (Samsung M386A8K40CM2-CVF)• RDIMM 64 GB (Samsung M393A8G40MB2-CVF) with RDIMM 32GB (Samsung M393A4K40CB2-CVF)

Note With a mix of 64 GB and 32 GB memory modules, the speed is 2 400 instead of 2 666.

- Following populations rules:
 - In the configuration recommended: the larger size memory module in slot 0 and the smaller size one in slot 1
 - All memory modules in slot 0 are the same and all memory modules in slot 1 are the same

4.19.2. BullSequana S1600 servers

Configurations mixing memory modules are allowed under the following conditions:

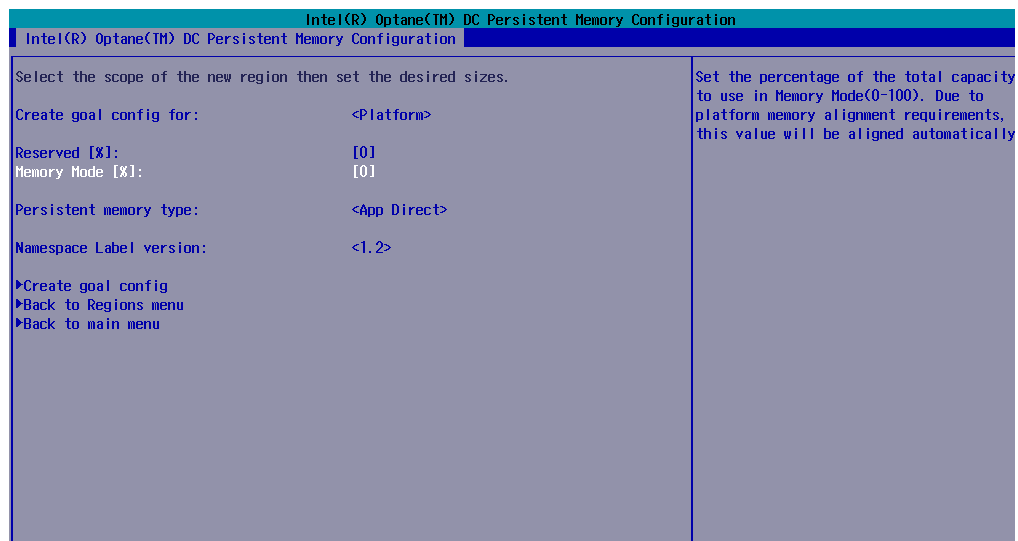
- For SAP HANA only
- Using only authorized parts:
 - LRDIMM 128 GB (Samsung M386AAG40MMB-CVF) with LRDIMM 64GB (Samsung M386A8K40CM2-CVF)
 - RDIMM 64 GB (Samsung M393A8G40MB2-CVF) with RDIMM 32GB (Samsung M393A4K40CB2-CVF)

Note With a mix of 64 GB and 32 GB memory modules, the speed is 2 400 instead of 2 666.

- Following populations rules:
 - All the memory module slots of all the modules are populated
 - Half of the memory module slots are populated with one type of memory module and the other half with the other type.
 - In the configuration recommended: the larger size memory module in slot 0 and the smaller size one in slot 1
 - All memory modules in slot 0 are the same and all memory modules in slot 1 are the same

4.20. Intel® Optane™ DCPMM for SAP HANA

Check that Intel® Optane™ DC Persistent Memory (DCPMM) configuration is as follows:



Reserved [%]:	[0]
Memory Mode [%]:	[0]
Persistent memory type:	<App Direct>

If that is not the case, modify the configuration.

See Configuration Guide for more information on how to configure DCPMM memory modules

4.21. Servicing Memory modules

Before removing a memory module, go to the SHC Hardware Exclusion page and check that the memory module is not excluded.

If the memory module is excluded, cancel the exclusion from the SHC Hardware Exclusion page.

See The SHC Reference Guide for more information on Hardware Exclusion.

```
./bsmBiosSettings.sh -H <IP> -u <user> -p <pwd> -a set -n 'PCI.PciePortDisable_47 0'
```

```
./bsmBiosSettings.sh -H <IP> -u <user> -p <pwd> -a set -n 'PCI.PciePortDisable_89 0'
```

```
./bsmBiosSettings.sh -H <IP> -u <user> -p <pwd> -a set -n 'PCI.PciePortDisable_131 0'
```

4.22. Downgrading the DCPMM memory module firmware

ApachePass firmware versions older than 1.2.0.5355 are no longer supported.

4.23. Non Maskable Interrupt

On specific configurations with servers running Linux, it is not always possible to get a dump when using NMI.

BullSequana S200 to S800 glueless servers

Set the Linux boot `crashkernel` parameter value to 2 KB.

BullSequana S1600 servers

Set the Linux boot `crashkernel` parameter value to 768 MB.

4.24. MicroSD cards in Internal Dual RAID board (URS)

In order to work properly in the Internal Dual RAID board, the microSDs must be formatted correctly. Please use only those provided by Atos representatives.

Chapter 5. Information

5.1. Enabling Trusted Platform Module (TPM)

Important Before enabling the TPM feature, it is mandatory to verify that its usage complies with local laws, regulations and policies and get approvals or licenses where applicable. Bull SAS will not be responsible for any related liabilities to any compliance issues arising from your usage of TPM violating the above mentioned requirements.

5.2. Displaying Firmware Versions

When displaying the firmware versions in the Server Hardware Console (SHC), the version of the BIOS_BKUP firmware displayed is not the same as the version of the BIOS.

The BIOS_BKUP firmware does not depend on the CPU type. It is only used to reset the PEB/PEBS Ethernet connection. It does not allow to boot.

5.3. PEB/PEBS Ethernet Firmware

The following table gives the versions of the PEB and PEBS Ethernet firmware. Both firmware are embedded in the BIOS firmware.

Name	Description	Version
FW_X722/X557_Intel	Embedded Ethernet chip for PEB	8000222E
FW_88E1512_Intel	Embedded Ethernet chip for PEBS	8000222C

5.4. Redfish Managers URI Resources

Some resource URIs given in section 4.3. Managers of the BullSequana S Redfish Reference Guide, 86 A1 76FR 03 are no longer up-to-date. The up-to-date information is given below.

Resource	Resource URI
BMC collection	/redfish/v1/Managers
BMC	/redfish/v1/Managers/{BMCInstance}
	/redfish/v1/Managers/{BMCInstance}/LogServices
SEL log collection	/redfish/v1/Managers/{BMCInstance}/LogServices/SEL/Entries
Message log collection	/redfish/v1/Managers/{BMCInstance}/LogServices/Message/Entries
Clear SEL log	/redfish/v1/Managers/{BMCInstance}/LogServices/SEL/Actions/LogService.Clearlog
Clear Messages log	/redfish/v1/Managers/{BMCInstance}/LogServices/Message/Actions/LogService.Clearlog
Reset the BMC	/redfish/v1/Managers/{BMCInstance}/Actions/Manager.Reset

5.5. Displaying the Boot Options with Redfish

Some information is missing from section 4.4.7.2 Displaying the Boot Options of the BullSequana S Redfish Reference Guide, 86 A1 76FR 03. The exhaustive section is given below.

Use a web browser to display the Boot options.

URI

/redfish/v1/Systems/Server/

HTTP method

GET

Output example

```

▼ Boot:
  BootSourceOverrideEnabled: "Once"
  BootSourceOverrideTarget: "Disk"
  ▼ BootSourceOverrideTarget@Redfish.AllowableValues:
    0: "None"
    1: "Pxe"
    2: "Disk"
    3: "None"

```

Note The boot options are displayed with GET /redfish/v1/Systems/Server/ only after the boot options have been modified with the action /redfish/v1/Systems/Server/Actions/Oem/ComputerSystem.SetBootOption

5.6. PCIe Blade Population Rules

The PCIe blade population rules given in the BullSequana S Upgrade Guide, 86 A1 56FR 05 are not up-to-date. The updated rules are listed below.

PCIe blade board types for BullSequana S200, S400 and S800 servers

- Network boards:
 - 50Gb/s
 - 40Gb/s
 - 25Gb/s
 - 10Gb/s
 - 1Gb/s
- Storage boards:
 - Fiber 32Gb/s
 - Fiber 16Gb/s
 - Fiber 8Gb/s
 - SAS Dual Channel
 - HH-HL NVMe 1.6TB
 - HH-HL NVMe 3.2TB
 - HH-HL NVMe 6.4TB
- RAID and SAS boards associated with FDBs to build RAID configuration or SAS configurations

PCIe blade board types for BullSequana S1600 server

- Network boards:
 - 50Gb/s
 - 40Gb/s
 - 25Gb/s
 - 10Gb/s
 - 1Gb/s
- Storage boards:
 - Fiber 32Gb/s
 - Fiber 16Gb/s
 - SAS Dual Channel
- RAID and SAS boards associated with FDBs to build RAID configuration or SAS configurations

RAID and SAS configuration rules

- RAID and SAS boards are used as internal front disk
- RAID and SAS boards are installed from master to slave modules, in the modules equipped with the FDBs
- RAID boards for the OS boot can only be allocated in master PCIe slots
- RAID or SAS boards for storage can be allocated to both master and slave PCIe slots

Population rules

- Network boards must be added to master and slave modules, starting from the master module (0) and then the slave modules (1, 2, 3, 4, 5, 6, 7)
- Storage boards must be added to slave and master modules, starting from the slave module (7, 6, 5, 4, 3, 2, 1) and then the master (0)
- RAID and SAS boards must be added to slot 4 in the master (0) and slave (1, 2, 3, 4, 5, 6, 7) modules, starting from the master module and to the slave modules
- Each module supports up to four legacy Ethernet ports included in the PEB or PEBS component (the component is the same for all the server modules):
 - Phy Ethernet Board (PEB) with 4 x 10Gb/s ports
 - Phy Ethernet Board SFP+ (PEBS) with 2 x 1Gb/s + 2 x 10Gb/s SR ports
 - Phy Ethernet Board SFP+ (PEBS) with 2 x 1Gb/s + 2 x 10Gb/s DAC ports
- Network boards of the same type and speed must be used for the slots dedicated to network within the server
- Network boards must be added in the following order: 10Gb/s then 1Gb/s or 25Gb/s then 1Gb/s or 40Gb/s then 1Gb/s or 50Gb/s then 1Gb/s (a mix of 10, 25, 40 and 50Gb/s boards cannot be used)

VMware configuration limitation

There is a number of configuration rules to follow when using VMware:

<https://configmax.vmware.com/home>

VMware 6.5 limitations

The number of supported Ethernet ports is limited:

- Combination of 1Gb/s and 10Gb/s ports: four 1Gb/s ports and sixteen 10Gb/s ports
- i40en 10Gb/s (Intel) ports: eight ports

VMware 6.7 limitations

The boards listed below cannot exceed eight ports:

- 10Gb/s DP Eth Adapter - CTX4 - SR Blade
- 10Gb/s DP Eth Adapter - CTX4 - TwinAx Blade
- 25Gb/s Dual Eth Adapter-CTX4-SR Blade
- 25Gb/s Dual Eth Adapter-CTX4-DAC Copper Blade

Note The legacy Ethernet ports may have to be inhibited on site at configuration time if the maximum number of ports exceed the VMware 6.7 configuration and hardware limits.

5.7. Disabling Ethernet Ports

1. Set up the server in Single Point of Management network configuration.

See Getting Started Guide for more information.

2. Disable Ethernet ports using BSM CLI commands.

Module 1

```
bsmBiosSettings.sh -H <IP> -u <user> -p <pwd> -a set -n 'PCI.PciePortDisable_47 0'
```

Module 2

```
bsmBiosSettings.sh -H <IP> -u <user> -p <pwd> -a set -n 'PCI.PciePortDisable_89 0'
```

Module 3

```
bsmBiosSettings.sh -H <IP> -u <user> -p <pwd> -a set -n 'PCI.PciePortDisable_131 0'
```

See Remote Hardware Management CLI Reference Guide for more information.

5.8. GPUs with VMware

It is mandatory to set the MMIOH BIOS parameter to 4 using the following command:

```
bsmBiosSettings.sh -H <IP> -u <user> -p <pwd> -a set -n 'RC.MmiohBase 4'
```

Note With Nvidia Tesla boards and if global memory size is bigger than 4 TB, set the parameter to 6.

Chapter 6. History of Previous Versions

6.1. AI models

6.1.1. TS 024.01 (June 2020)

New Features and Changes

BIOS_PUR043 Firmware

- Update GbE Binary for PEB and PEBS
These binaries contain the fixes for Port 0 drop after Force Power Off and the Port 0 "down" in the OS after re-enabling port 0.
- Add new setup option SETUP.BiosSetupVersion. This read-only setting cannot be modified in the BIOS setup utility.
- BIOS now sends warning message to BMC when UPI link failed to initialize in full width because it will cause significant performance reduction if one or more UPI link work in half width.
- Fix vulnerability: this new BIOS forbids access to SPI flash descriptor from CPU so malicious software can't corrupt SPI flash.
- Add new setup option PCH.DisableShutdownCycle. If set to 1, this option disables PCH response to shutdown message sent from CPU to PCH on catastrophic CPU error. PCH responds to this message by triggering warm reset to avoid potential data corruption caused by CPU unpredictable behavior after catastrophic error. However, this warm reset might also prevent BMC from reading CPU error registers, making it more difficult to find out the root cause of the catastrophic error. So, it is recommended to disable PCH response to shutdown cycle on machines where we want to investigate crashes.
- In BIOS 43.37.08.x14 it was required to launch Device Manager to make boot option for iSCSI device appear in boot list. This BIOS fixes this issue: if an Ethernet card configured as iSCSI is present you no longer have to enter Device Manager to boot from a network drive connected to this card.
- Fix password check on OS boot: in previous BIOS 43.37.08.x14 there was a problem when supervisor password was enabled in BIOS setup. BIOS would check password on entry into setup utility (which was normal and expected) but also on on OS boot (which was unexpected). This BIOS fixes this issue: when supervisor password is enabled in BIOS setup there is no password check on OS boot, only on entry into setup utility
- In previous BIOS 43.37.08.x14 it was not possible to use IPMI boot device command to boot VMware from USB stick. This BIOS fixes this issue.
- BIOS now stops after SCI link init timeout because it is considered a fatal error (BMC firmware will be notified and shut down the machine).
- Report CPU-to-UNC UPI link init failure to BMC. BIOS stops after link init timeout because it is a fatal error. BMC will shut down the machine.
- Report slave module data transfer failure to BMC. BIOS stops after data transfer timeout because it is a fatal error. BMC will shut down the machine.
- Clean up UPI link retries in MC banks on BullSequana S1600 servers. Linux will no longer report machine checks in MC banks 5/12 in Linux boot log
- Fix LAN drop problem in Force Power Off

CPLD_P_CPB

Added support for URS to interface BMC and Cyprus chip

EMM_DEFAULT_BIOS_SETTINGS

- Add new setup option SETUP.BiosSetupVersion. The setup version is in an integer format (no dot). For this release, it is 112. The setup version can be viewed using the following command:

```
bsmBiosSettings.sh -H <IP> -u <user> -p <pwd> -a get -n 'SETUP.BiosSetupVersion'
```

Note The setup version should not be modified. It is intended to be read-only.

- Change MEM.allowCorrectableError from 1 (Enable) to 2 (AUTO), where AUTO now means DISABLE. The result of this change is to disable the channel if there are FPT errors during memory training.
- Add new setup option PCH.DisableShutdownCycle. The default is 0 (Disable). If set to 1, this option disables PCH response to shutdownmessage sent from CPU to PCH on catastrophic CPU error. PCH responds to this message by triggering warm reset to avoid potential data corruption caused by CPU unpredictable behavior after catastrophic error. However, this warm reset might also prevent BMC from reading CPU error registers, making it more difficult to find out the root cause of the catastrophic error. So, it is recommended to disable PCH response to shutdown cycle on machines when investigating crashes:

```
bsmBiosSettings.sh -H <IP> -u <user> -p <pwd> -a set -n 'PCH.DisableShutdownCycle 1'
```

- Add new setup option MEM.Type16Windows. The default is 0 (Disable). It is recommended to set it to 1 (Enable) on Windows systems to report the maximum memory capacity in the Type 16 SMBIOS structure in the format expected by Windows:

```
bsmBiosSettings.sh -H <IP> -u <user> -p <pwd> -a set -n 'MEM.Type16Windows 1'
```

EMM33_BMC

- BullSequana S1600: Hardware reset button in SHC is greyed
- BIOS trace is enabled by default
- New version of openssl 1.0.2u
- UPI lane reduction detected and logged into BMC message log
- New config key to force HiTDP config
- Internet Explorer 11 is no longer supported, use Google Chrome or Mozilla Firefox
- URS support: RAID configuration status and SD Card 0 and 1 status are monitored and displayed in the sensor page of the SHC
- A timeout error event for UPI link initialization has been added. In some rare cases BIOS can hang indefinitely while waiting for the UPI links to the UNCs to become ready. This event is decoded by the BMC.

- Redfish:
 - Now enabled by default
 - Improved response time
 - Support of SEL Clear log action added
 - Active Directory configuration can now be displayed
 - Added PEBS to software inventory
 - Disallow ReadOnly accounts from using Patch in Bios Settings
- Signed firmware update support: this firmware version implements the control of firmware signature during the update process. Only signed firmware can be updated from this version. Update of non signed firmware will be refused.

EMM34_LMC

- UNB Fan Control algorithm
- Signed firmware update support: this firmware version implements the control of firmware signature during the update process. Only signed firmware can be updated from this version. Update of non signed firmware will be refused.

FPGA_CPB

- Changes to Turn ON ID LED when reset button pressed is implemented
- Error dump feature during abrupt shutdown due to EPO, CATERROR and THERMTRIP implemented

Resolved Issues

All Models

- **Faulty memory module information missing from the SHC**
When a DCU error (Poison error) is detected, the faulty memory module is now identified in the Server Hardware Console (SHC).
- **Memory module exclusion**
Excluding a memory module using the Hardware Management CLIs is now possible.
- **Slave modules unavailable**
Having unavailable slave modules after booting no longer happens.
- **Redfish: DCPMM memory modules**
The MemoryDeviceType is now correctly set to IntelOptane for DCPMM memory modules.
- **Redfish: PEBS firmware**
For systems equipped with PEBS modules, the PEBS firmware are now listed in the redfish/v1/UpdateService/SoftwareInventory.

BullSequana S1600 servers

- **iCare: Incorrect event owner in the System Even Log viewer**

There are no longer any discrepancies in the event owners.

- **iCare: Failed update of FPGA_LMB_Mngt during global firmware update**

The FPGA_LMB_Mngt_Image firmware (LMB MAIN_FPGA2) is now correctly updated during firmware global update.

6.1.2. TS 022.04 (August 2020)

New Features and Changes

This Technical State 22.04 is a patched one compared to the Technical State 22.03. It contains new releases of the following firmware.

BIOS_PUR043

- Fixes SHC security vulnerabilities
- Adds new setting PCH.DisableShutdownCycle

This setting can be used to prevent the reset of the system in order to investigate a crash and collect exhaustive dumps.

It is set to 0 by default, meaning the reset of the system will happen.

If it is set to 1, the reset will be prevented. It is recommended to set the setting to 1 only when investigating a problem.

CPLD_P_CPB

Adds issue fixes

EMM33_BMC

Fixes SHC security vulnerabilities

FPGA_CPB

Adds issue fixes

Resolved Issues

This release fixes the following issues.

- **System shutdown with CATERR error**
In rare cases, the system shuts down and a CATERR error is signaled.
- **PCI boards link down**
In rare cases, the link of all the PCI boards goes down at the same time and the drivers of the PCI boards are unable to re-establish it.
- **Undetected PCI boards**
In rare cases, at power on, some PCI boards are not started up and therefore not detected by the system.

6.1.3. TS 022.03 (January 2020)

New Features and Changes

This Technical State 22.03 is a patched one compared to the Technical State 22.02. It contains new releases of the following firmware:

- BIOS_PUR043
- EMM33_BMC

Resolved Issues

All Models

- **Connection to the BMC lost**

On a multi-module compute box, if the Hide Management Port option is selected in the SHC of each module, a Force Power Off results in the loss of the connection to the BMC.

BullSequana S1600 servers

- **Reboot under OS impossible**

Restarting the system under OS is not possible: the booting sequence gets stuck and the system cannot be powered off.

6.1.4. TS 022.02 (November 2019)

New Features and Changes

ApachePass firmware

New wipeout script "startup.nsh rev 1.1": allows to clear the content of DCPMM memory modules in Application Direct mode.

BIOS_PUR043 firmware

- Support BullSequana S1600 servers
- Update Gbe X722 Uefi driver from 2.0.36 to 3.8.07 to fix unhealthy Gbe driver in device manager
- Report correctly uncorrectable fatal error generated by Data Cache Unit (DCU) Machine Check Bank 1 in BMC as Fatal error instead of no-Fatal error
- Updated to Intel PurleyRefresh reference code BKC19ww26 (New ApachePass firmware image required version (5395))
- Update PCH ME Firmware to latest version SPS_E5_04.01.04.323.0
- Update first generation Intel® Xeon® Scalable processor H0 microcode to version mb750654_02000064
- Update second generation Intel® Xeon® Scalable processor B0 microcode to version mbf50656_0400002b
- Update second generation Intel® Xeon® Scalable processor B1 microcode to version mbf50657_0500002b
- Update second generation Intel® Xeon® Scalable processor A0 microcode to version mb750655_03000012
- Fix "IPMI Watchdog timer expired" event logged in BMC messages after 20 min when booting FrontPage or Setup
- Update PEB and PEBS 10GbE firmware to 4.10 version from Lewisburg Enabling Kit "2019_WW23_LBG_B2_LEK_PKG"
- Fast boot is disabled by default. To enable it, use the following command:

```
bsmSetConfParam.sh -H BMC_IP -u super -p pass -k 'bmc.bios.enable_traces' -x yes
```

- New default setup settings file v1.9.

EMM33_BMC firmware

- Redfish:
 - assetTag field management
 - Support of SSL certificate for https access through redfish
 - it is possible to update some firmware through redfish interface
 - it is possible to get or set any BIOS setting
 - Active Directory user's group support
 - support of Managers/{BMC_Instance}/LogServices schema
 - support Managers/{BMC_Instance}/EthernetInterface schema
 - support Managers/{BMC_Instance}/NetworkProtocol schema
 - adding LDAP enable attribute for authentication through LDAP or not. It is persistent (ie over a BMC reset)
 - monitoring of redfish services for automatic restart if a service stop
 - adding two OEM attributes 'data1' and 'data2' in chassis schema. The usage is customer dependent. They are persistent (ie over a BMC reset)
 - add slave support for log-service messages

EMM34_LMC firmware

- Logging of UNC Error Dump Registers post CATERR event assertion

EMM_DEFAULT_BIOS_SETTINGS file

The defaultbiossetup file has been updated to include all BIOS settings contained in BIOS_PU043.36. This includes the settings to disable PCIe ports on module 4 and above:

- PCI.PciePortDisableMx_y (where x = module# and y = port #)
- default = 2 (AUTO)

FPGA_LMB_Mngt firmware

- Error dump feature implemented

FPGA_LMB_Multi firmware

Clock measurement improvements for 100MHz

FPGA_UNB firmware

- Clock measurement improvements for 100MHz

Resolved Issues

Redfish

- https connection is now supported
- The Count attribute for ProcessorSummary is now correctly implemented

All models

- **FPGA Update**

The update of the FPGA_CPB firmware, using the CLI commands or the Server Hardware Console (SHC), is now completed normally.

BullSequana S1600 servers

- **System Hard Reset or Reboot**

Performing a system hard reset or reboot from the Operating System (OS) is now possible.

- **Incomplete FRU Information**

The FRU information of the UBox components, displayed in the SHC FRU Information page, is now complete.

- **Incorrect Total Memory Size**

The Memory Size value displayed in the SHC Power Management is now correct: the value displayed is the memory size of the partition.

- **IPMI Out-Of-Band Deactivation**

The deactivation of IPMI OOB from the slave module is now propagated to the slave modules.

6.2. BullSequana S200 to S800 Glueless Servers

6.2.1. TS 021.03 (September 2019)

New Features and Changes

This Technical State 21.03 is a patched one compared to the Technical State 21.02. It contains new releases of the following firmware:

- EMM33_BMC
- FPGA_CPB

Resolved Issues

This release fixes the following issues.

- **Motherboard (CPB) failure**

there are some very rare corner cases where transition from very low current to very high current in the Voltage Regulator (VR) of the CPU may damage this VR and so causes a mother board failure

- **Server Hardware Console (SHC) with /var full**

On BullSequana S200 servers, the SHC version 33.38.00 may hang due to the /var file system being full.

6.2.2. TS 021.02 (July 2019)

New Features and Changes

BIOS_PUR043

- Integrate Insyde code drop 34 aligned with PurleyRefresh BKC19ww16 (Intel® DCPMM firmware image required revision (5375))
- Update PCH ME Firmware to latest version SPS_E5_04.01.04.296.0
- Support second generation Intel® Xeon® Scalable processor stepping A0, B1, H0
- Update first generation Intel® Xeon® Scalable processor H0 microcode to version mb750654_0200005e
- Update second generation Intel® Xeon® Scalable processor microcodes
 - B0 to version mbf50656_04000024
 - B1 to version mbf50657_05000024
 - A0Intel® Optane™ DC Persistent Memory (DCPMM) to version mb750655_03000010
- Added "Fast Boot" option, that help to reduce BIOS traces and therefore boot time. Can be activated with a BMC key:
 - bsmSetConfParam.sh -H BMC_IP -u super -p pass -k 'bmc.bios.enable_traces' -x yes|no
 - pmsmMC.py config -n bmc-node -s bmc.bios.enable_traces=yes|no
- Make BIOS boot automatically the next Bootable Device without displaying Popup Fail
- Log Intel® DCPMM runtime health status changes and uncorrectable (poison) memory errors to the BMC. To enable this logging, either:
 - Apply the default settings from the defaultbiossetup.1.8 file:

```
bsmBiosSettings.sh -H ip -u user -p password -a reset
```

- Enter the following commands:

```
bsmBiosSettings.sh -H ip -u user -p password -a set -n 'SETUP.FnvErrorEn 1'
```

```
bsmBiosSettings.sh -H ip -u user -p password -a set -n 'SETUP.FnvErrorLowPrioritySignal 1'
```

```
bsmBiosSettings.sh -H ip -u user -p password -a set -n 'SETUP.FnvErrorHighPrioritySignal 1'
```

- Dump Model Id and Stepping of each processor in multimodule system
- Fix unexpected VMware crash when the Page Retirement feature is activated

EMM_DEFAULT_BIOS_SETTINGS

Note The defaultbiossetup file is common to first and second generation Intel® Xeon® Scalable processors.

- Disable MEM.setSecureEraseAllDIMMs setting changed from 1 (Enable) to 0 (Disable). Default setting in defaultbiossetup file was incorrect. This setting, when enabled, causes persistent Intel® DCPMM to be erased during the boot when security on the memory module is enabled and locked.
- Enable Intel® DCPMM RAS support by enabling the following settings:
 - SETUP.FnvErrorEn changed from 0 (DISABLE) to 1 (ENABLE)
 - SETUP.FnvErrorHighPrioritySignal changed from 0 (DISABLE) to 1 (SMI_SIGNAL)
 - SETUP.FnvErrorLowPrioritySignal changed from 0 (DISABLE) to 1 (SMI_SIGNAL)
- Enable XptPrefetchEn for second generation Intel® Xeon® Scalable processors

EMM33_BMC

- The udpsrv/tftp server in the BMC does NOT do a DNS lookup for name resolution anymore. This prevents having time-out during the tftp transfers when the DNS is not accessible.
- In Configuration -> BMC Settings -> Messages web page of the SHC, when enabling Syslog forwarding feature, the System Event Log events are now sent to the remote syslog in addition to the messages logs
- In Configuration -> BMC Settings->Network web page of the SHC, it is now possible to disable IPMI OOB access
- In Configuration -> BMC Settings->Network web page of the SHC, it is now possible to hide eth0 port to the operating system
- Display firmware version of Intel® DCPMM in web interface
- Sensor list and values have been added in the log collect function of the SHC
- A progression bar has been added in the power management web page when powering on or off the server
- The green power LED is now used to indicate boot sequence
- This release is the first release that brings the support of Redfish. Please refer to the Redfish documentation to have detailed on which features are supported.

Resolved Issues

Getting FRU Information on Mellanox ConnectX-4 Adapters

There are no more discrepancies between the adapter FRU information displayed by the Server Hardware Console (SHC) and the results of the `lspciconf_m3.pl` script.

SHC Messages Page Unreachable

Using the `~` character in a user message no longer renders the Messages page unreachable.

PEBS SFP Fault Messages

The out of place message is no longer displayed when no cables are plugged into to the PEBS.

WEO Fault Signal

A WEO fault signal message is no longer issued.

System crash when the Page Retirement feature is activated

There are no longer system crash after several correctable memory errors when the Page Retirement feature is activated.

The SDDC+1 and Page Retirement features may have been disabled as part of the temporary workaround. After the installation of the TS 21.02, enable them with the following CLI commands:

```
$ bsmBiosSettings.sh -H X.X.X.X -u super -p <password> -a set -n 'MEM.SddcPlusOneEn 1'
```

```
$ bsmBiosSettings.sh -H X.X.X.X -u super -p <password> -a set -n 'MEM.PageRetireEn 1'
```

6.2.3. TS 020.03 (May 2019)

New Features and Changes

This Technical State 20.03 is a patched one compared to the Technical State 20.03. It contains new releases of the following firmware:

- BIOS_CCL041
- BIOS_SKL040
- EMM33_BMC

Resolved Issues

Unexpected Server Hardware Console (SHC) Reboot

The SHC does not reboot unexpectedly anymore.

Incorrect USB Ports found by Microsoft WS2019 Cert test

The test now finds the correct type and number of USB ports.

6.2.4. TS 020.02 (March 2019)

New features and changes

General

This version supports the following main new features:

- Second generation Intel® Xeon® Scalable processors
- Intel® DCPMM memory modules

BIOS_SKL040

- Supports display of ATOS logo on the BIOS access screen.
- Add 2 corrections for BIOS settings that could return to default values and cause loss of customer settings:
 - Preventing reset BIOS settings to default in case of CMOS issue (battery or checksum).
 - Avoid copying defaultbiossetup file to current biossetup file (then resetting configuration) prior to the transfer of the current BIOS settings back to EMM, at the end of BIOS phase.
- RAS: supports Partial Memory Mirroring, adapt the event sent to BMC in consequence.
- Enable data poisoning but let Viral disabled, used for error containment.
- Update Intel® Server Platform Services manageability engine firmware version to SPS_E5_04.00.04.393.0.
- First generation Intel® Xeon® Scalable processor microcode has evolved to MB750654_02000050 in Intel's Reference Code

CPLD_P_CP

- PEB Phy reset and SPI Mux selection logic changed to take care of corner cases of PEB flash corruption during AC Power ON/OFF operation.

EMM_DEFAULT_BIOS_SETTINGS

- Configure volMemMode to AUTO instead of 1LM to natively support MemoryMode (2LM) required by DCPMM memory modules.
- Enable packet poisoning by default to allow a better errors containment.

EMM33_BMC

- Support of DCPMM memory modules
- New Atos branding support
- An informative message is added in the message log during boot if the memory size is different from the one stored during previous boot
- An informative message is added in the message log during boot if the number of CPUs is different from the one stored during previous boot
- User can add free text in BMC message log through web interface: Maintenance > Maintenance Operations > Add User Message
- New RAS event: Partial Memory Mirroring activated

- A new option is available to User in Maintenance > Remote Console Setting > User Specific > "Launch Remote Console in Java WEB Start" to enable/disable the use of Java Web Start to launch the Remote Console.
- Improvement in security, some deprecated ciphers have been disabled:
 - SEED-SHA, RC4-SHA, RC4-MD5, DES-CBC3-SHA, DES-CBC-SHA, EXP-DES-CBC-SHA, EXP-RC2-CBC-MD5, EXP-RC4-MD5
 - No possibility of enabling enable-weak-ssl-ciphers - support have been removed in openssl
 - SSL v3 is disabled

FPGA_CPB

- Implemented BMC watchdog time out reset counter.
- Support to reset PCH and PEB PHY using ASRAM register.

Resolved issues

Note The four first issues listed below are actually resolved by the TS 07.02 but were missing from its release note.

PEB Ethernet Activity LEDs

PEB Ethernet LEDs behave now correctly.

See Description Guide for more information on LED behavior

Fan Messages at Power On

No more inconsistent fan status messages are issued at Power On.

Power Supply Unit (PSU) Redundancy Sensor

The Power Redundancy sensor is now reliable to check power supply.

Dismounting and Mounting Back a Module from a Partition

Partitioning from the SHC after having dismantled and mounted back a module from a partition on a multi-module with a partition made of two modules is now possible.

Memory Module exclusion

Excluding a memory module from the SHC is now possible.

BIOS Update

Using the Preserve NVRAM option when updating the BIOS firmware does not lead to PEB/PEBS issues anymore.

Note To avoid any issues with firmware update, it is strongly recommended to use the global firmware update feature available through iCare or the BSM CLI commands.

6.2.5. TS 007.02 (November 2018)

New features and changes

BIOS_SKL040

- Add new entry "12TB" for MMIOH_Base setting in BIOS setup to solve a failure with VMware ESXi and Tesla GPU cards
- Update first generation Intel® Xeon® Scalable processor microcode for security issues Spectre_NG and L1TF (SA-00115 and SA-00161) to version MB750654_0200004D
- Fix the ACPI SLIT table when SNC is enabled, now the table is getting the correct distances
- Implement Page Retire mechanism for VMware (remove memory pages when too much corrected errors occur) by using CMCI interface. This mechanism is controlled with 3 new settings and enabled by default:
 - MEM.PageRetireEn: Activate or not the Page Retire (0=Disable/1=Enable)
 - MEM.PageRetireErrThreshold: Num of errors in a timeframe (default:10)
 - MEM.PageRetireThresholdWindow: Timeframe in hours (default:24)
- Remove "Lacking IO resources" warning because it is only useful in Legacy mode not UEFI mode.
- Workaround for UPI Topology issue, rerun several times the process instead of aborting immediately (max 4 times).
- Send additional information to EMM when error with DIMMs to know if memory is excluded or not.
- Use BIOS Code drop 59

CPLD_IO_CPB

- Filter removed from BMC hang status signal to decrease action delay during the BMC hang event Filter added for BMC hang status signal

EMM33_BMC

- New version of OpenSSL 1.0.2k, to increase the security level (support of TLS 1.2)
- New version of OpenLDAP 2.4.46

EMM_DEFAULT_BIOS_SETTINGS

- Revert UPI.StaleAtoSOptEn to 1, mistakenly switched to 0
- Add a revision number to the defaultbiossetup file, name will now have the following naming : "defaultbiossetup.X.Y"
 - X= Major revision (example: adding or removing settings)
 - Y= Minor revision (example: changing settings values)

Important The revision number must be removed from the name before the file is uploaded to BMC.

- To avoid any compatibility issues with USB devices, all the USB ports located at the front of the server are configured as USB2 ports. Default value are switched to 0 instead of 1.
 - PCH.PchUsbSsPort_3 : control topmost connector
 - PCH.PchUsbSsPort_4 : control bottommost
 - PCH.PchUsbSsPort_5 : control middle
- Add 3 new BIOS settings for VMware Page Retirement
 - MEM.PageRetireEn : Activate or not the Page Retire (0=Disable/1=Enable)
 - MEM.PageRetireErrThreshold : Num of errors in a Timeframe (default:20)
 - MEM.PageRetireThresholdWindow : Timeframe value (default:24 hours)

To modify the settings, use the following command:

```
./bsmBiosSettings.sh -H <IP address> -u <user> -p <pwd> -a set -n '<parameter> <value>'
```

FPGA_CPB

- ASRAM operating frequency changed to 100Mhz from 200Mhz
- PEB buffer was in Flip Flops. To do timing closure, this is changed to RAM
- FPGA_CS_N signal is double synced before using in the counter
- Latches were there in CAT Error and CPU F/U/C Error Timers and this are removed
- Clock enable signals were used as clocks in few places so these are changed too
- The 6.25MHz clock to shifty bus logic were output of counter earlier. Now this clock is generated from PLL itself
- Some dangling logics are removed
- Clock and other timing constraints were updated to make sure there are no internal timing issue
- Latches were there in Sync block and these are removed now

FPGA_M3WEO

- Fixed major revision ID
- The following registers were wrongly mapped for module 1 and module 2:
 - SPI1_register_addr_B16
 - o_SPI1_register_addr_B17
 - o_SPI2_register_addr_B16
 - o_SPI2_register_addr_B17.

This been corrected: the following operations will now function correctly:

- FRU Read/Write
- BCM register Read/Write
- BCM Flash Read/Write
- M3WEO register access for module 1 and module 2

Resolved issues

FAN Regulation Messages

Fan speed is now suitably regulated: there are no longer multiple alarming fan speed sensor statuses or messages in the System Event Log (SEL).

Mounting Drives as Virtual Media

Virtual Media now works correctly with two drives.

Be aware that clicking on Connect or Disconnect in the Virtual Media dialog box causes the existing virtual media to be disconnected and a new USB device to be connected with the updated virtual media configuration.

Also, clicking on Virtual Media Connect or Disconnect buttons while an installation is running from virtual media is likely to interrupt the installation.

PXE Boot with a Mellanox_ConnectX-4Lx Adapter

With the adapter firmware provided with this TS, the UEFI firmware is now installed by default. Consequently, booting with PXE is no longer an issue.

If this adapter is part of the server, be sure to update its firmware to the latest version.

IO Port Resource Message

The irrelevant *Lacking IO port resource* message no longer appears when booting.

6.2.6. TS 006.02 (August 2018)

New Features and Changes

BIOS_SKL040

- Enable StaleAtoSEn BIOS setting by default to improve performance

See Chapter 4. Recommendations for more information on performance improvement

- Fix S800 USB booting timeout for VMware
- UPI warning message sent to BMC only when failure in fast mode
- Suppress UPI warning for non-existing UPI link
- Avoid errors on Intel® Xeon® Scalable processors with only two UPI links
- Fix in DMAR table avoiding error messages with RHEL
- Fix Bootdev issues with bootable USB or VMware
- Provide relevant memory module location information in case of memory failure or warning (module/socket/iMC/channel/dim/rank)
- Fix SRAT APIC and X2APIC affinity structures

EMM33_BMC

- In Messages log, BIOS messages are not displayed as BMC messages anymore
- Support of OEM model 38 in SNMP traps

FPGA_CPB

- Logic used to run RPL_FAN at full speed changed
- ID LED turning ON or OFF logic moved to IOCPLD

Resolved Issues

CPU Power Consumption Sensors

The CPU power consumption sensors now reports correct values.

WEO fault Message

A WEO fault message is no longer issued when the WEO sensor has no reading.

Boot Manager Entries

When there are more than 15 entries in the boot manager, each entry is now assigned a unique EFI network number.

Memory Module Messages during BIOS Initialization

Inconsistent warning messages about the memory modules are no longer issued during BIOS initialization.

Updating Firmware from the Server Hardware Console (SHC)

When a firmware update is successful, the following message is no longer displayed:

Please wait for the connection to be established.

Missing Processors When Booting the server

There no longer processors missing from the configuration with the following message in the SEL:

```
2018-05-14 18:14:01 BMC Message BIOS Init Warning Message on Module: 0 DIMM:  
([Major-code:58h; Minor-code:02h])
```

6.2.7. TS 005.04 (June 2018)

New features and changes

EMM33_BMC

New release fixing the following issues:

- Incorrect system name displayed by the NFC tag
- DFM LEDs turning on red randomly

FPGA_CPB

New release fixing the following issue:
DFM fans always running at full speed

Resolved Issues

Incorrect system name displayed by the NFC tag

There are no longer errors in the system name displayed by the NFC tag.

DFM LEDs turning on red randomly

The DFM LEDs do not become red randomly anymore.

DFM fans always running at full speed

The DFM fans are now running at suitable speed.

6.2.8. TS 005.03 (May 2018)

New features and changes

EMM33_BMC

- New release fixing the following issue:
DFM fans randomly unavailable with TS 05.02.

Resolved Issues

DFM fans randomly unavailable with TS 05.02

With the present release of the EMM33_BMC firmware, the fans are running normally, without random faults.

6.2.9. TS 005.02 (March 2018)

New features and changes

BIOS_SKL040

- Intel fix for Spectre and Meltdown issues
- Memory SddcPlusOne RAS feature enabled by default.
- Fixed excluded dimm display in setup memory topology.
- Improved PatrolScrubbing logging messages on error.
- The integrated Gbe controller is now reported to the Server Hardware Console (SHC).
- Improved dmidecode type9 display for PCIe slots information.
- The Press Esc line is now displayed at 60% of window height for small screens.
- Added Rank Sparing RAS feature (1 or 2 spare ranks).
- Improved RAS messages sent to SHC for SDDC, ADDDC, RankSparing, Leaky Bucket RAS features.

EMM33_BMC

- Changed display of identification LED for better understanding of actions.
- SEL events can be displayed in multiple or single web pages.
- Added the SEL binary file to Collect Log files.
- Partitioning is now available from the SHC, including from a slave console.
- Boot device and instance can be selected from the SHC. This is used to set parameters that direct the system boot to a particular option after a system power up or reset. This feature is the same as the IPMI boot device option.
- PCIe hot plug is available under Red Hat and Suse only.
- On the Power Management web page, Force Power Off, Force Power Cycle, Hard Reset and Diagnostic Dump commands need to be confirmed.
- The "super" user name can be modified from the SHC.
- Implemented reset to default function.

FPGA_CPB

- Fans run at FULL SPEED when the SHC hangs in power on state.

Resolved Issues

Simultaneous power on of different partitions

Powering on two modules of different partitions simultaneously is now possible.

FPGA Update on a BullSequana S800 Server

Inconsistent messages are no longer issued at power on after updating the FPGA on a BullSequana S800 server.

BullSequana S200 Server BIOS Update with Error in SEL

Inconsistent messages are no longer issued when the BIOS update is successful.

Unable to Update Bios with the Preserved Nvram Option

Updating the BIOS firmware from the SHC with the preserved Nvram option is now possible. On a multi-module server, every module is updated successfully.

ESXi 6.5 Installation Failure on USB Raid SD Card (URS)

Installing ESXi 6.5 on a USB Raid SD Card (URS) with Virtual Media is now possible without failure.

Updating the SHC firmware on a multi-module server

The SHC will not show the firmware update as completed if it is not completed on all modules.

6.2.10. TS 004.02 (January 2018)

This Technical State 04.02 is a patched one compared to the Technical State 04.01. It addresses the Intel Meltdown/Spectre patch.

See The Technical Support Bulletin 400-18-02 for more details, available on the Bull Support Website: <https://support.bull.com>

6.2.11. TS 004.01 (December 2017)

First delivery

6.3. BullSequana S1600 servers

6.3.1. TS 016.02 (September 2019)

New Features and Changes

This Technical State 16.02 is a patched one compared to the Technical State 16.01. It contains new release of the EMM33_BMC firmware.

This release supports iCare 2.7.0 with restrictions.

-
- See**
- Section 2.1.2. Global Firmware Update for more information on iCare restrictions
 - Bull Support website <https://support.bull.com> to download iCare 2.7.0.
-

6.3.2. TS 016.01 (August 2019)

New features and changes

BIOS_CCL042

- OSB (opportunistic snoop broadcast) is disabled if UNC is present
- New reference code 584.D01 (BKC 19ww16)
- New microcode mbf50657_05000024 for second generation Intel® Xeon® Scalable processor stepping B1
- BIOS setup settings are no longer hard-coded. They can be changed via BSM CLI
- New setup settings 'PCIEPortDisableMx' allow disabling PCIE root ports in modules 4 to 15 (in previous BIOS version you could disable PCIE root ports in modules 0 to 3 only)

CPLD_LMB

- CPLD IPMI Upgrade Bug fix. The xcf file of CPLD is updated with operation field XFLASH Erase, Program, Verify
- BMC push button reset press status logging and clear option implemented

EMM_DEFAULT_BIOS_SETTINGS

- This file must be uploaded to the BMC SD card with BSM CLI command without any revision number extension:

```
$ bsmBiosSettings.sh -H [IP] -a copy -f [path_to]/defaultbiossetup
```

- This file is used in 2 cases:
 - when the current bios setting file is missing on SD card, it is created based on defaultbiossetup
 - When we run a BSM CLI command "reset", current bios setting file is replaced by defaultbiossetup (user settings are lost):

```
$ bsmBiosSettings.sh -H ip -u super -p pass -a reset
```

- Disable MEM.setSecureEraseAllDIMMs setting changed from 1 (Enable) to 0 (Disable). Default setting in defaultbiossetup file was incorrect. This setting, when enabled, causes persistent DCPMM memory to be erased during the boot when security on the DIMM is enabled and locked
- Enable XptPrefetchEn for second generation Intel® Xeon® Scalable processors

EMM33_BMC

- Collect log show SEL, sensors and messages for LMBs
- The udpsrv/tftp server in the BMC doesn't do any more a DNS lookup for name resolution. This prevent from having time-out during the tftp transfers when the DNS is not accessible.

EMM34_LMC

- Platform Event traps emitted by LMC firmware contain LMB board serial number and board ident information
- The udpsrv/tftp server in the BMC doesn't do any more a DNS lookup for name resolution. This prevent from having time-out during the tftp transfers when the DNS is not accessible

FPGA_CPB

- CPU0,CPU1 PROCHOT signals are now being driven from FPGA to CPU based on the CPU0 and CPU1 VRHOT signals which causes CPUs to throttle.
- MEMHOT signals also being driven from FPGA based on the memory VRHOT signals.

Resolved issues

Unresponsive Module 0 CPU Purley Board (CPB)

After an AC OFF/ON of the system, the CPB board of the module 0 now responds to ping requests.

Accessing Slave Modules System Event LOG (SEL)

On a server partitioned in two four-module partitions, the SEL of the slave modules is now displayed in the SHC web interface of the master module.

BIOS Firmware Update

The update of the BIOS firmware now succeeds without occasional errors.

CPLD_LMB Firmware Update

The update of the CPLD_LMB firmware with the BSMCLI command now succeeds.

6.3.3. TS 015.01 (June 2019)

New features and changes

CPLD_NBB

- Enclosure management disk locate feature included
- NVMe disk power sequence state machine changed to handle 3.3V AUX fault under standby

EMM33_BMC

- In Configuration -> BMC Settings -> Messages web page of the SHC, when enabling Syslog forwarding feature, the System Event Log events are now sent to the remote syslog in addition to the messages logs.
- In Configuration -> BMC Settings->Network web page of the SHC, it is now possible to disable IPMI OOB access.
- In Configuration -> BMC Settings->Network web page of the SHC, it is now possible to hide eth0 port to the operating system.
- In Maintenance -> Maintenance Operations -> Add Users Message web page of the SHC, it is now possible to add a free text message in the message log.
- Sensors list and values have been added in the log collect function of the SHC.
- A progression bar has been added in the power management Web page when powering on or off the server.
- The green power LED is now used to indicate system state flow.
- The display of the SEL events for the LMC in WEB monitoring interface is available.
- Clock loss monitoring is available.
- UNC Error pins monitoring (U,F) available

EMM34_LMC

- Added SMC feature for Board ID /Revision ID
- Web changes for displaying LMB's SEL tab in master Web page
- UNC error monitoring support added
- Enabling lmb/unb 100Mhz clock measurement

EMM_DEFAULT_BIOS_SETTINGS

- Enable XptPrefetchEn
 - UPI.XptPrefetchEn changed from 0 (DISABLE) to 2 (AUTO) – AUTO results in ENABLE.

Resolved issues

CPU Purley Board (CPB) Firmware Update

It is now possible to update the firmware of the CPB board using the BSM CLI commands.

Repartitioning a two four-module partitioned system

It is now possible to repartition a four-module partition that is powered off without having to power off the other four-module partition.

6.3.4. TS 014.01 (April 2019)

First delivery

Bull Cedoc
357 avenue Patton
BP 20845
49008 Angers Cedex 01
FRANCE