

EVIDEN

# Quick Start Guide

The following copyright notice protects this book under Copyright laws which prohibit such actions as, but not limited to, copying, distributing, modifying, and making derivative works.

Copyright ©Eviden SAS

2024 Printed in France

### Trademarks and Acknowledgements

We acknowledge the rights of the proprietors of the trademarks mentioned in this manual.

All brand names and software and hardware product names are subject to trademark and/or patent protection.

Quoting of brand and product names is for information purposes only and does not represent trademark and/or patent misuse.

Hardware

October 2024

Eviden  
30 bis rue du Nid de Pie  
49000 Angers  
FRANCE

*The information in this document is subject to change without notice. Eviden will not be liable for errors contained herein, or for incidental or consequential damages in connection with the use of this material.*

---

# Table of Contents

Preface	iii
Intended Readers.....	iii
Chapter 1.	Discovering the server..... 5
1.1.1	USB key (part of the delivery)..... 5
1.1.2	Support Online (SOL) resources for BullSequana SA (Eviden support website) ..... 5
1.2	Server identification..... 7
1.2.1	MAC addresses collection..... 7
1.2.2	XAN serial number ..... 8
1.2.3	Motherboard Serial Number ..... 8
Chapter 2.	Starting the server..... 9
2.1	Server BMC setup ..... 9
2.1.1	BIOS Access – Static IP configuration ..... 9
2.1.2	Powering the system..... 10
2.2	Connect and setup the BMC ..... 11
2.2.1	How to access BIOS menu from the BMC..... 12
2.3	Check HW inventory and components status..... 13
2.3.1	Hardware Inventory from the BMC GUI..... 13
2.3.2	Hardware Inventory from BIOS menu..... 13
Chapter 3.	Deploying the system ..... 16
3.1	Preparing OS deployment ..... 16
3.1.1	Server Power on..... 16
3.1.2	Operating System installation options ..... 16
Chapter 4.	Platform management tools..... 19



---

## Preface

---

In this guide you will find the first steps to perform before you can use your new BullSequana SA server.

See The Bull support web site for the most up-to-date product information, documentation, , firmware updates, software fixes and service offers:  
[BullSequana SA servers — Bull On-line Support Portal](#)

---

---

## Intended Readers

This guide is intended for customer technical expert or EVIDEN Maintenance team.



---

## Chapter 1. Discovering the server

Your system has been factory-built and tested arriving with a BIOS and firmware ready to go.

### 1.1.1 USB key (part of the delivery)

A USB key is delivered with documentation, firmware and BIOS version.

### 1.1.2 Support Online (SOL) resources for BullSequana SA (Eviden support website)

Product documentation and downloads are available from Eviden website:

<https://support.bull.com/ols/product/platforms/bullion/bullsequana-sa-servers/>

More contents are available to the customer with support contract (login access is requested on this webserver).

If you don't have an account, you can sign up at :

[https://support.bull.com/ols/join\\_form](https://support.bull.com/ols/join_form)





---

## 1.2 Server identification

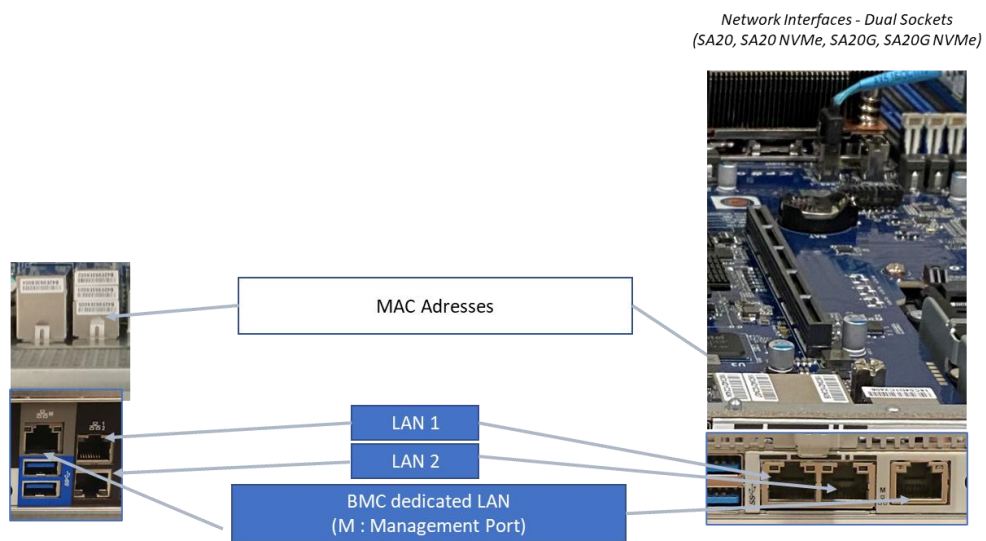
After unpacking your server and before racking it, save the following information:

- MAC Addresses
- XAN serial number
- Motherboard Serial number

The following chapters explain how to find and how to use them.

### 1.2.1 MAC addresses collection

Located on network adapters labels.



LAN1 : MAC

LAN2 : MAC LAN1+1

BMC via dedicated interface (M): MAC LAN1+2

BMC via shared interface (LAN1): MAC LAN1 +3

## 1.2.2 XAN serial number

The XAN is a unique number that identifies your server at Eviden, located on top of the server chassis. or on the front label drawer.

XAN serial number - front drawer



Dual Sockets

XAN serial number - front drawer



Single Socket

Label on chassis



You will be asked for this number each time you query support Eviden.

## 1.2.3 Motherboard Serial Number

This number is used as the default password to log in to the BMC.

It can be found on the right side of the chassis.



---

## Chapter 2. Starting the server

---

### 2.1 Server BMC setup

By default, network is configured in DHCP mode.

Two cases for IP configurations:

- your network is providing DHCP service: contact your network administrator.
- you are using a static IP configuration in this case; you have to configure this IP address in the BIOS as specified in the following section.

Two cases to define ports used:

- BMC via dedicated interface (M)
- BMC via shared interface (LAN1)

#### 2.1.1 BIOS Access – Static IP configuration

If you use DHCP go to [2.1.1.2 Start the server](#).

##### 2.1.1.1 Connect monitor & keyboard.

Before starting the server, you need to connect a VGA display and a keyboard.

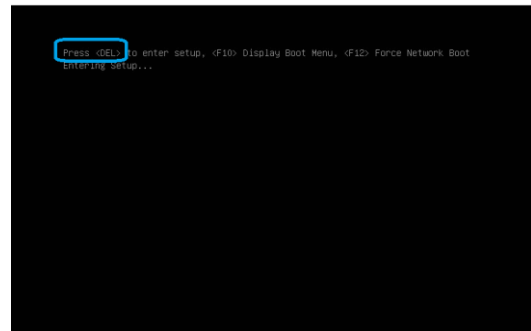
The connectors are located on the back of the server."



## 2.1.1.2

Start the server.

The server when you see the screen press the <DEL> key to enter BIOS.



In the BIOS menu select:

Server Mgmt

BMC network configuration

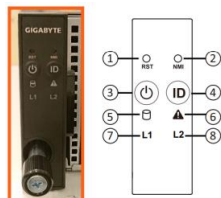
Then enter Your IP address, Subnet, Router,... then select Save & Exit

## 2.1.2

Powering the system

The server is started by pressing power button  on the front panel.

Front Panel



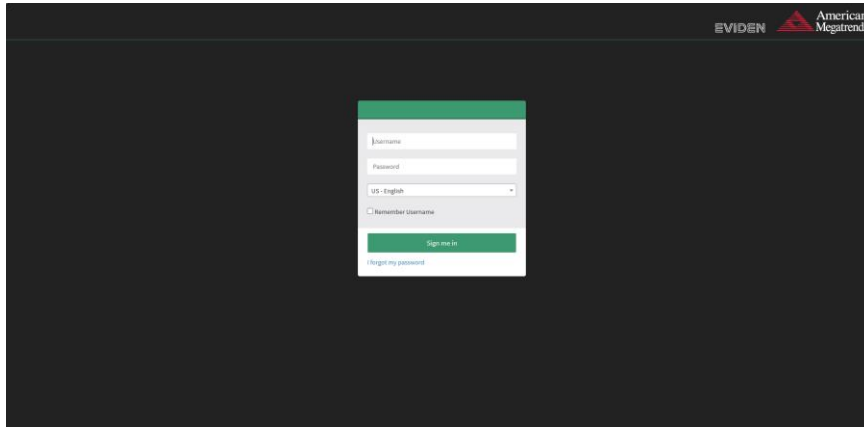
In the User Guide located on the USB stick ("documentation" directory), you will find in the section "Front Panel LEDs and Button" the meaning of the different LEDs.

## 2.2 Connect and setup the BMC

For the first BMC login, open a browser and go to: [https://IP\\_Address\\_of\\_the\\_server](https://IP_Address_of_the_server) then open a session using default user “admin”

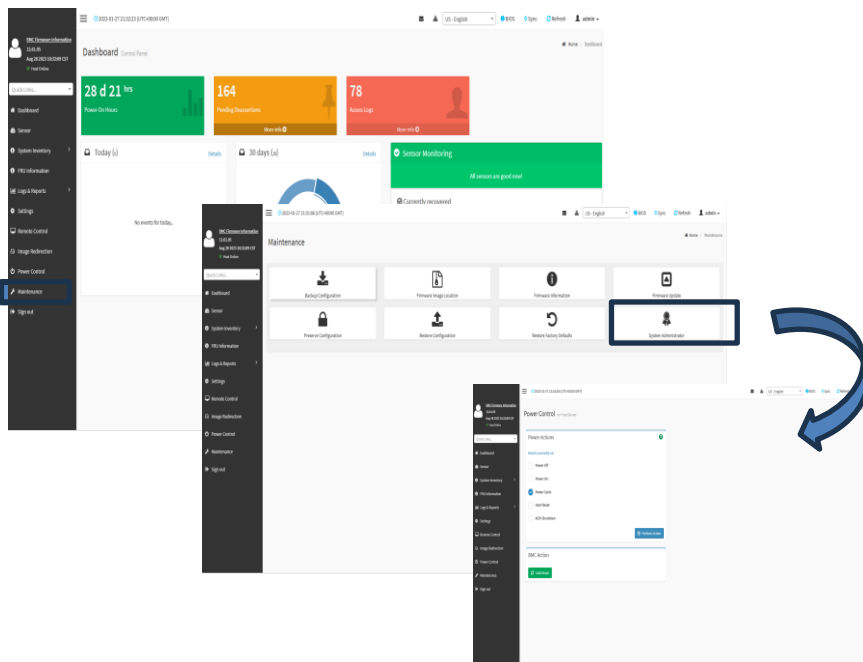
The password is located on the right chassis side (cf [Motherboard Serial Number](#))

For example



Then change the default password,

Go to menu “Settings”, “User Management”, select “admin” account, change, and save the new “admin” user password.



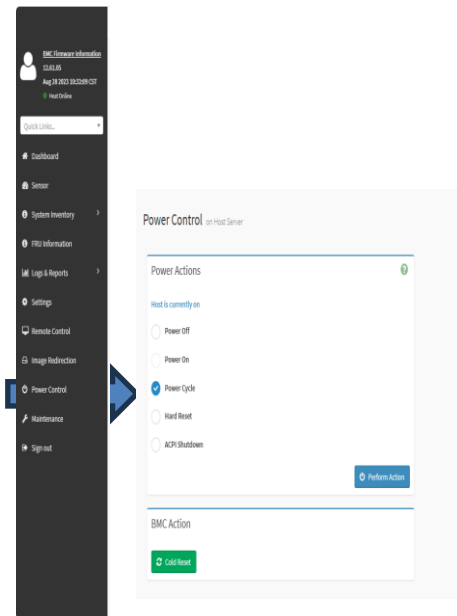
## 2.2.1

## How to access BIOS menu from the BMC

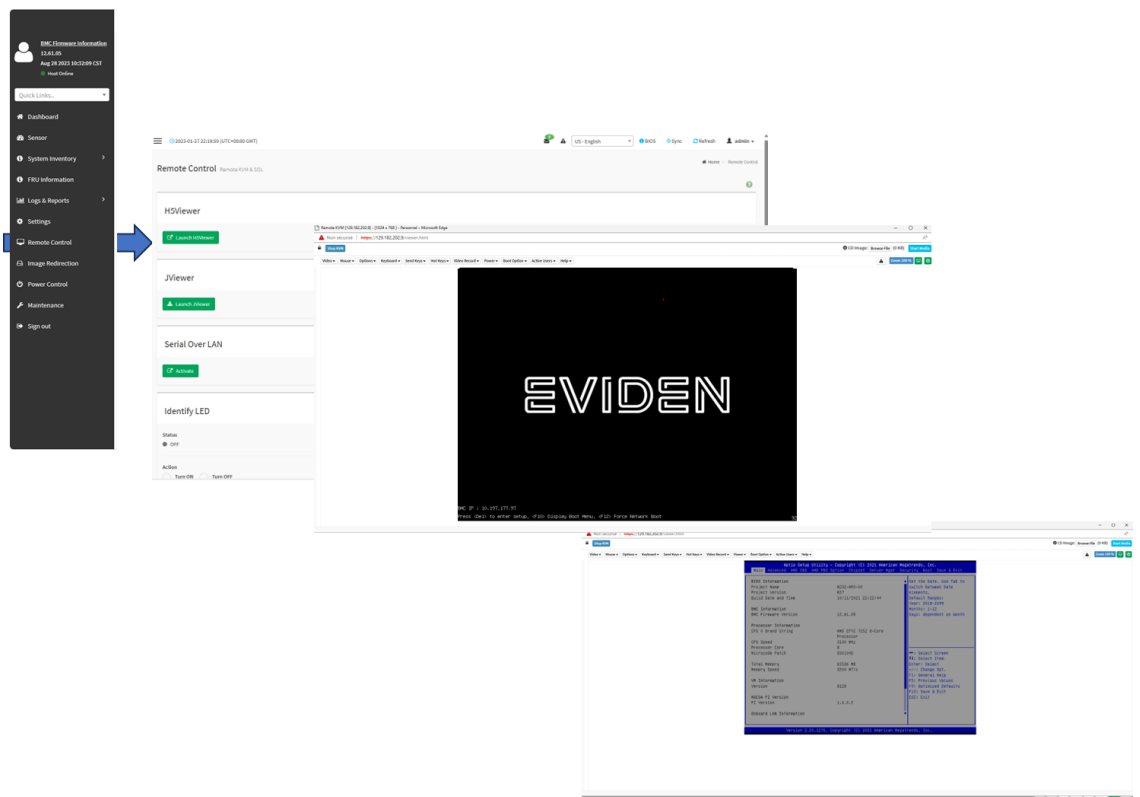
To access the BIOS, you must restart your server. Follow these steps:

1. Navigate to the BMC dashboard.
2. Select the "Power Control" menu.
3. In the subsequent screen, choose "Power Cycle."
4. Click on "Perform Action."

This will restart your server.



While the server is rebooting, navigate to the BMC dashboard and select the "Power Control" menu. Then, launch the "H5Viewer" to open a remote window on your server. When you see the screen, press the <DEL> key to enter the BIOS



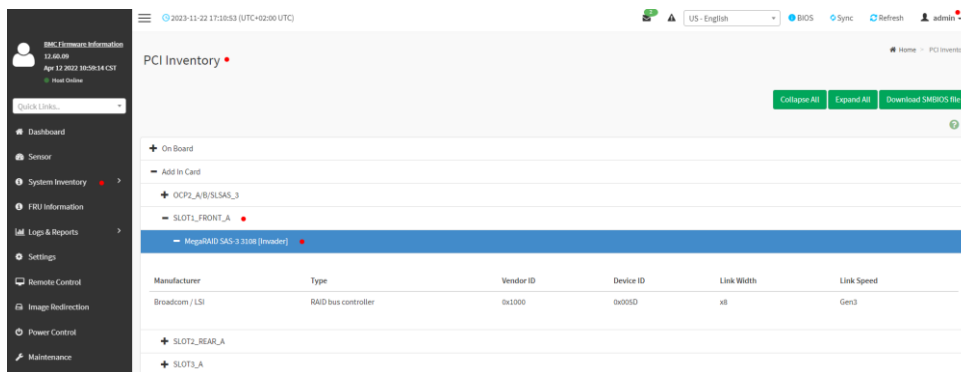
## 2.3 Check HW inventory and components status

In most cases, servers are configured with boot drives in RAID1, although this may vary depending on your order specifications.

Other drives connected to the MegaRAID adapter are configured in JBOD (Just a Bunch Of Disks) mode. Administrator shall finalize MegaRAID configuration on-site.

### 2.3.1 Hardware Inventory from the BMC GUI.

Connect to the BMC using the username "admin" and verify the presence of the PCI RAID card by following these steps: System Inventory => PCI Inventory = Add In Card

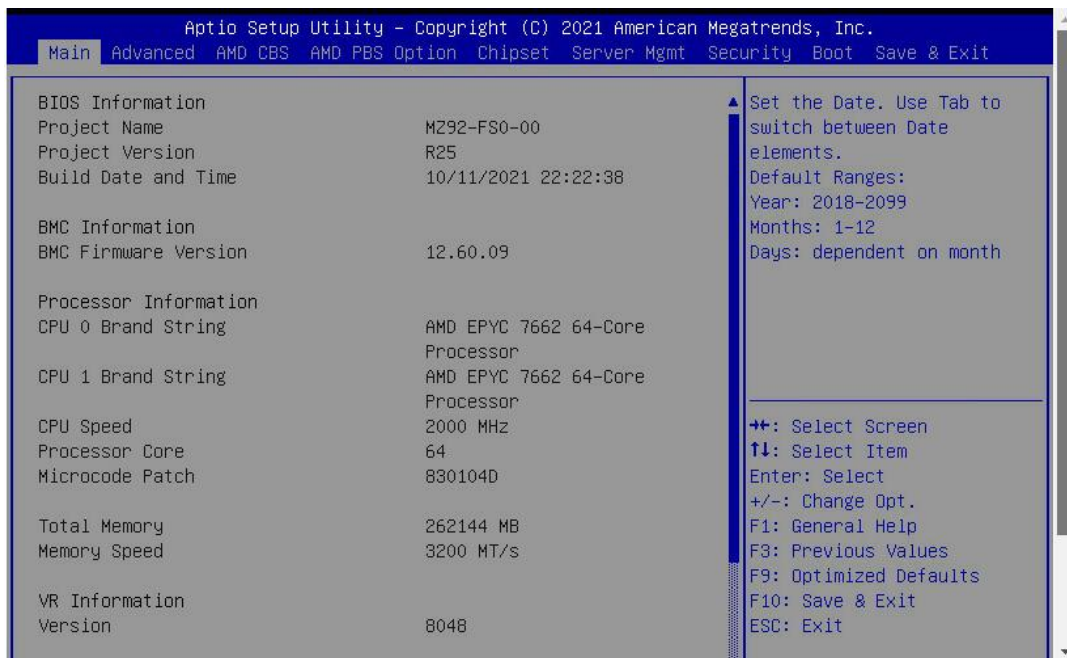


Drives behind the MegaRaid PCI card are not directly visible here. Use the BIOS Setup (see next section).

### 2.3.2 Hardware Inventory from BIOS menu.

During the server Power On, select <DEL> to enter in the BIOS menu [see how to access BIOS menu from the BMC](#).

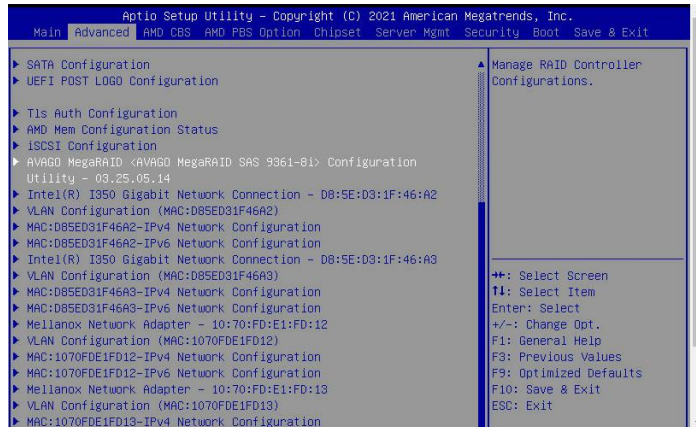
At the home page you have main information on your server



2.3.2.1

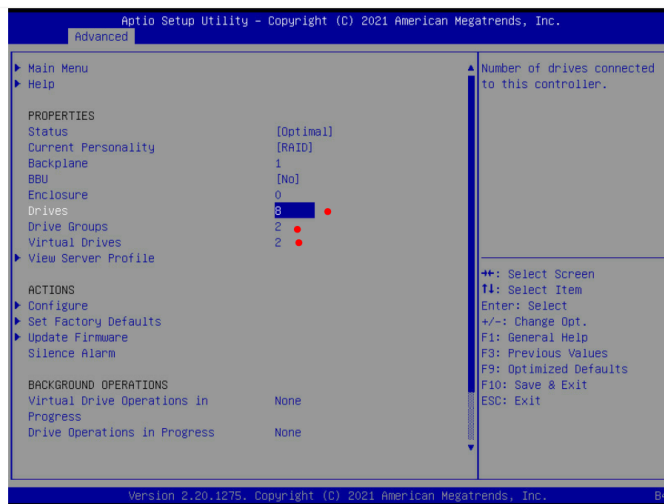
RAID components

Navigate to Advanced => AVAGO MegaRAID model > Configuration Utility

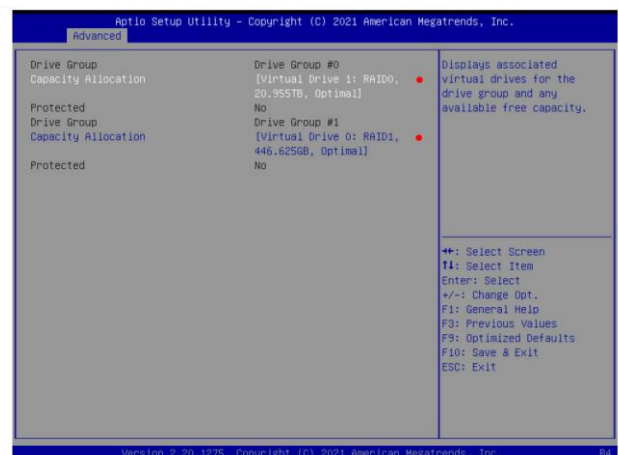
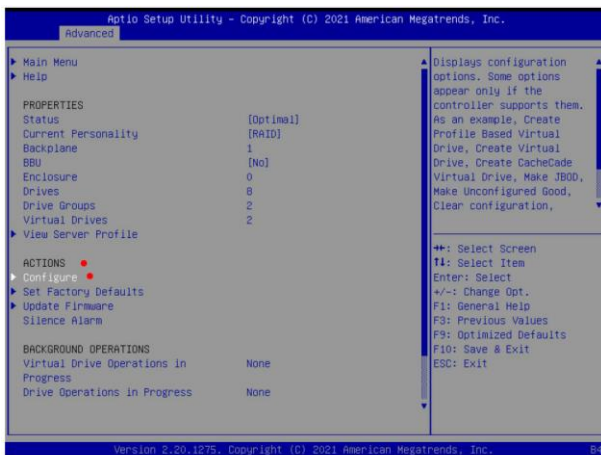


Look in PROPERTIES and verify that:

- Drives to see the available disks behind the PCI card
- Drive Groups to see the number of configured Raid Group
- Virtual Drives to see the number of volumes configured and available.



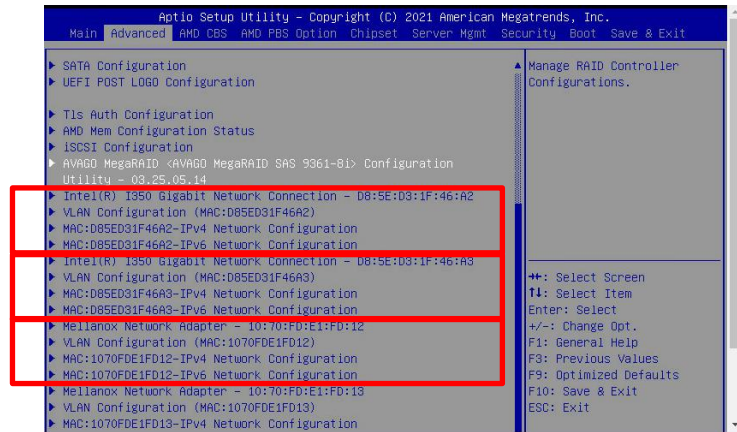
In ACTIONS, you're able to verify the RAID types, Status and capacity:





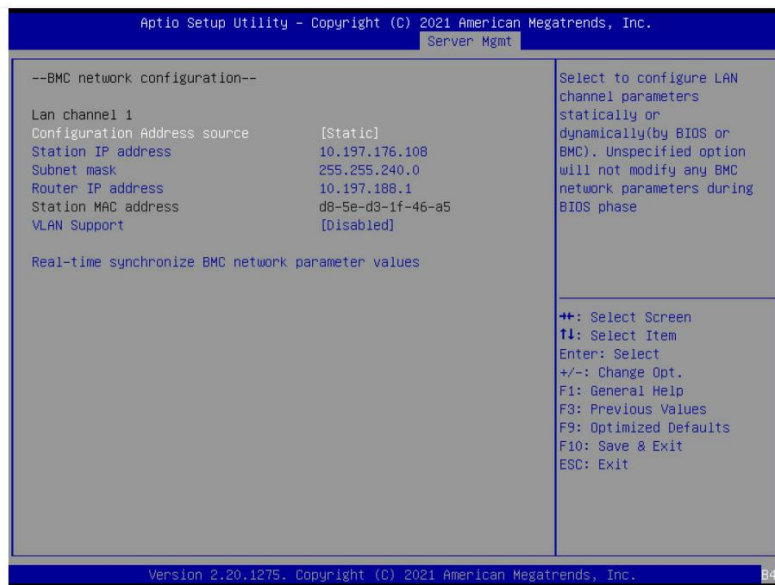
### 2.3.2.2 Network

From the "Advanced" menu, you can find 4 dedicated submenus for each Network adapter:



### 2.3.2.3 BMC network

Navigate to Server Mgmt => BMC network configuration. This interface can be used to specify static IP configuration.



---

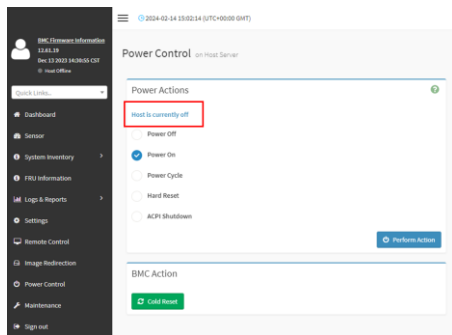
# Chapter 3. Deploying the system

---

## 3.1 Preparing OS deployment

### 3.1.1 Server Power on

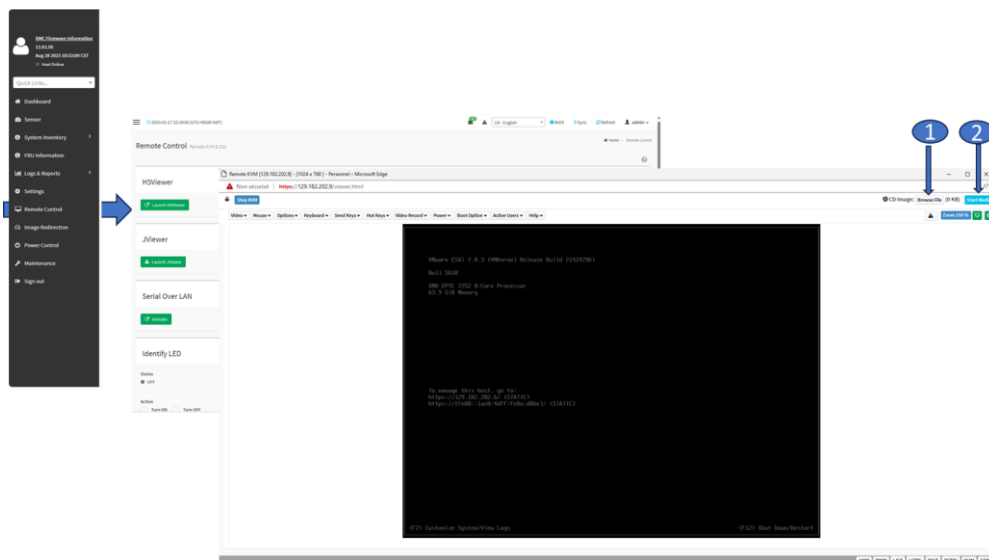
Check the status of your host, if off please Power On



### 3.1.2 Operating System installation options

#### 3.1.2.1 By using a Virtual Media

From the remote windows select an image to load then click start to install your operating system

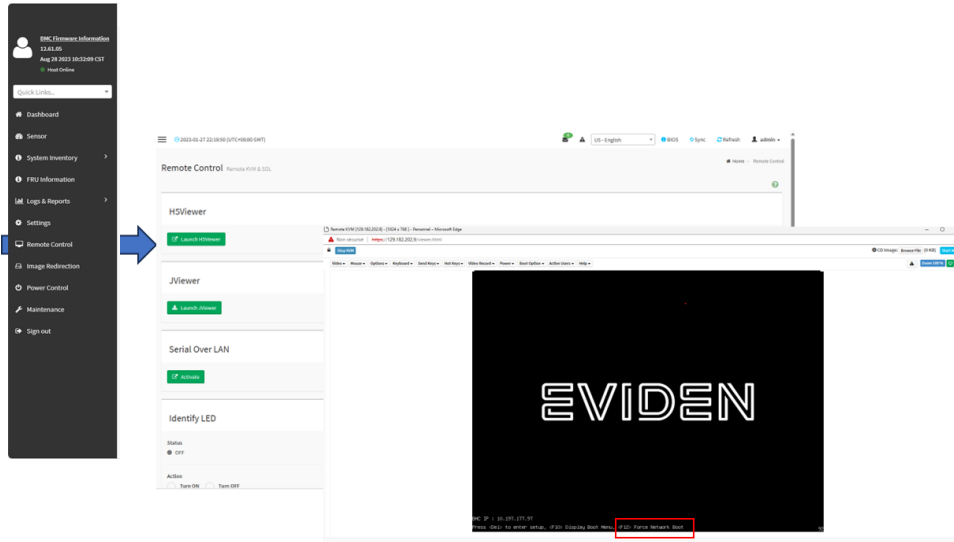


### 3.1.2.2

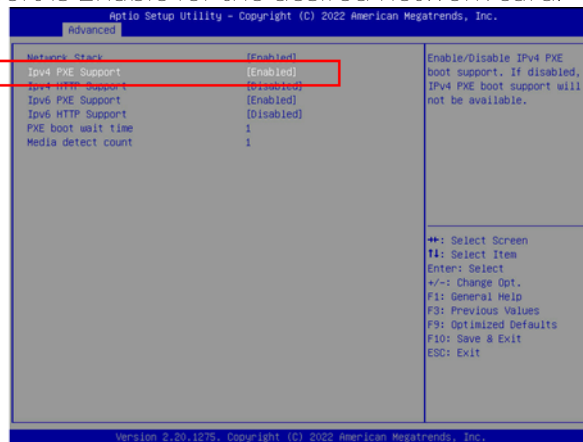
By using a Pre-boot eXecution Environment (PXE)

Change the BIOS boot list to enable PXE booting. Then, restart the server and connect to the BMC using the admin account. Navigate to the "Remote Control" submenu and open a remote window.

You can also restart the server and during the boot session press the < F12 > key to force Network boot.



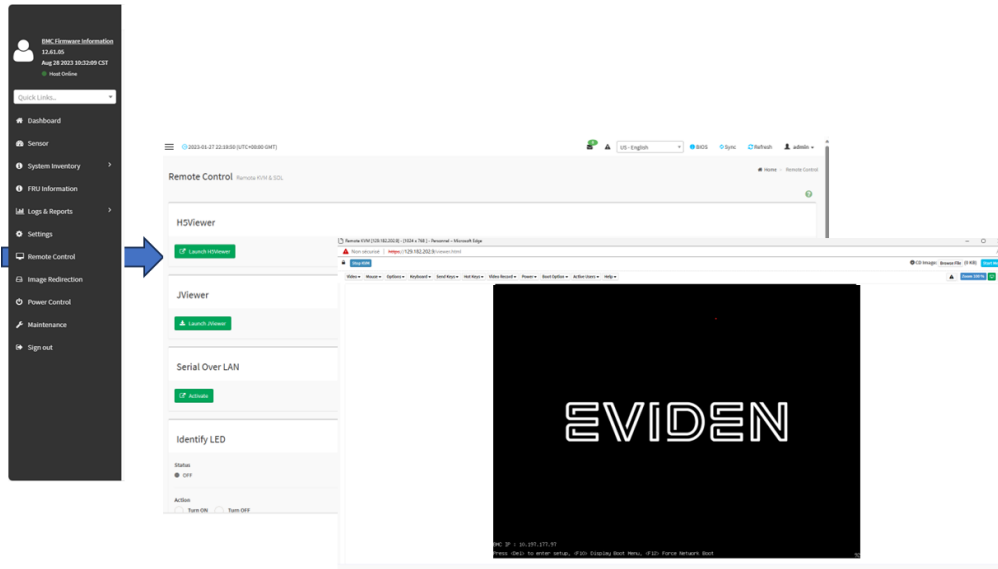
Verify that PXE support is Enable for the desired network card:



### 3.1.2.3

#### By using a bootable USB drive

Plug a bootable USB flash drive into any of the USB ports of the server. You may need to adjust the BIOS boot list to enable booting from the USB drive. Afterward, restart the server and connect to the BMC using the admin account. Then, navigate to the "Remote Control" submenu and open a remote window.



---

## Chapter 4. Platform management tools

With OneBSM, servers can be viewed individually or grouped by server type, and the interface adapts dynamically based on the type of server being monitored.

The Dashboard provides a comprehensive overview of all connected servers, displaying key information such as:

- Health status
  - Alert logs
  - Power consumption distribution
  - Total power consumption history
  - A list of scheduled tasks along with their completion
- OneBSM console is a graphical management and monitoring system for all BullSequana SA server models detected on the local network.

OneBSM can be download on SOL:

(<https://support.bull.com/ols/product/platforms/bullion/onebsm-1/onebsm>)

We recommend downloading from the Broadcom website the web-based application LSI Storage Authority (LSA) that enables you to monitor, maintain, troubleshoot, and configure the Broadcom MegaRAID card.