


Doc. Reference : CL-LS-CL-01-EN	NovaScale F3 Series How To	
Product :	NovaScale F3 Series	Issued : Sept. 22, 2012
Subject :	iDRAC7 License Backup Procedure.	
Abstract :	This note explains all the steps to done an iDRAC7 license backup.	



Architect of an Open World™

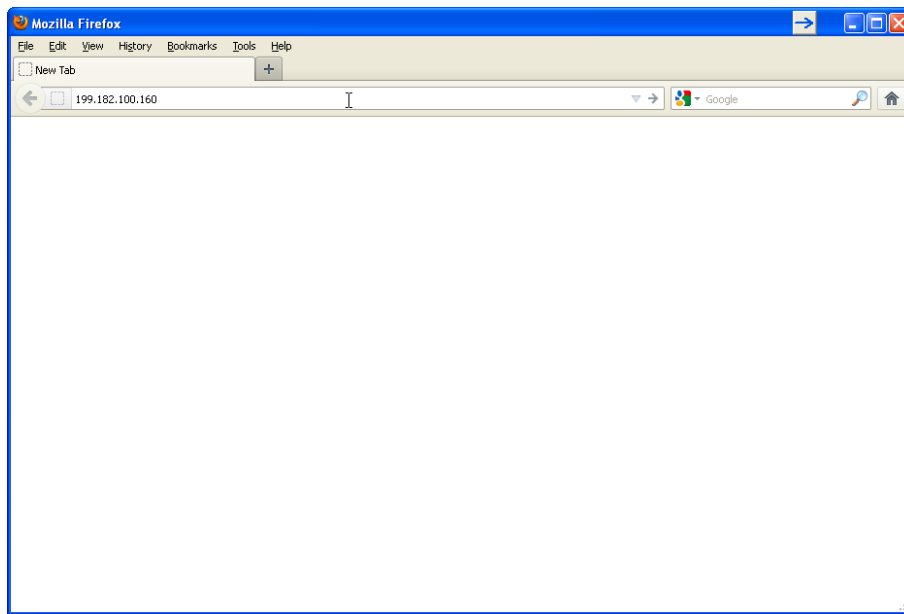
Contents

1) *iDRAC7 license backup* _____ **3**
2) *iDRAC7 license import* _____ **6**

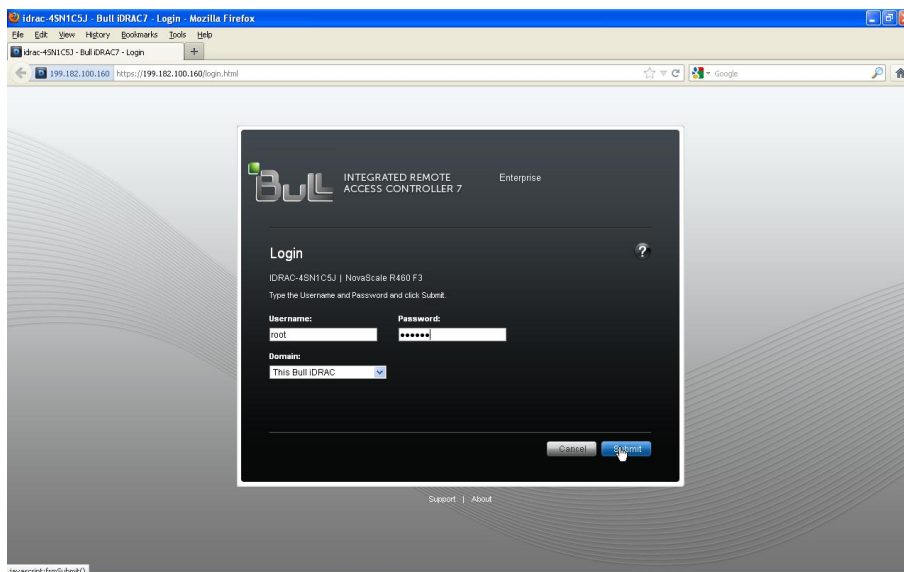
1) iDRAC7 license backup

iDRAC7's are now provided with a software license, this one is unique, Bull recommends to his customers to make a backup of this license and to keep it in a secured place. Hereafter the procedure to do it.

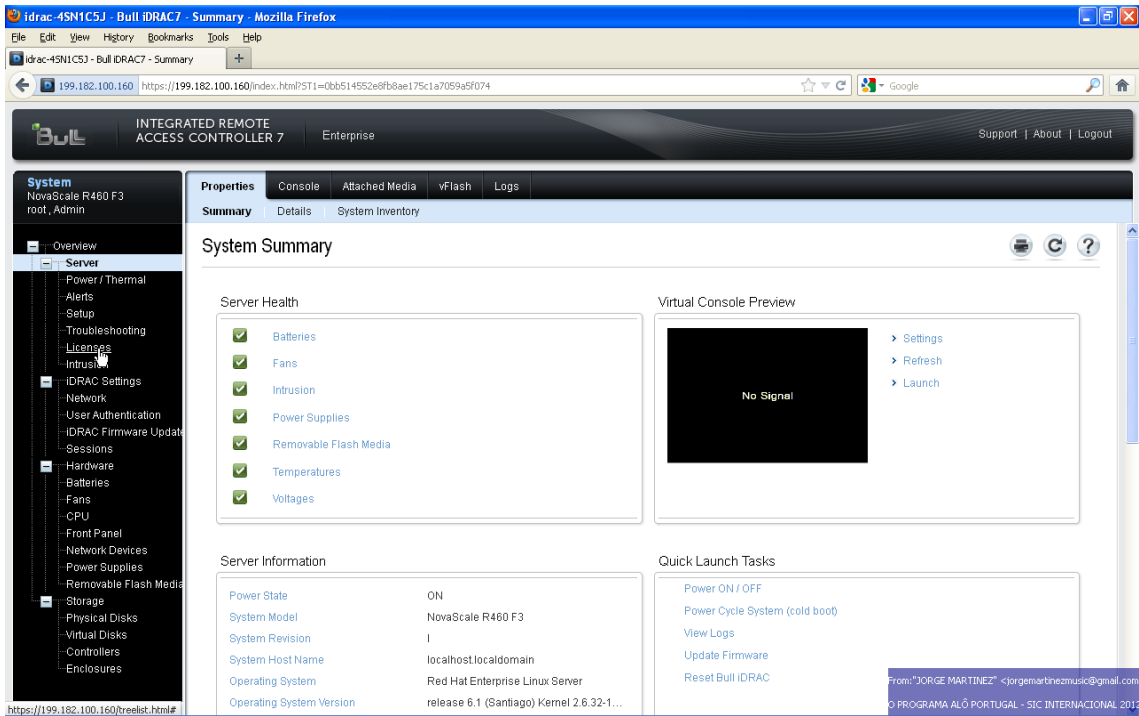
- a. Connect to the iDRAC7 through an internet browser as shown below (default iDRAC7 IP address: 192.168.0.120).



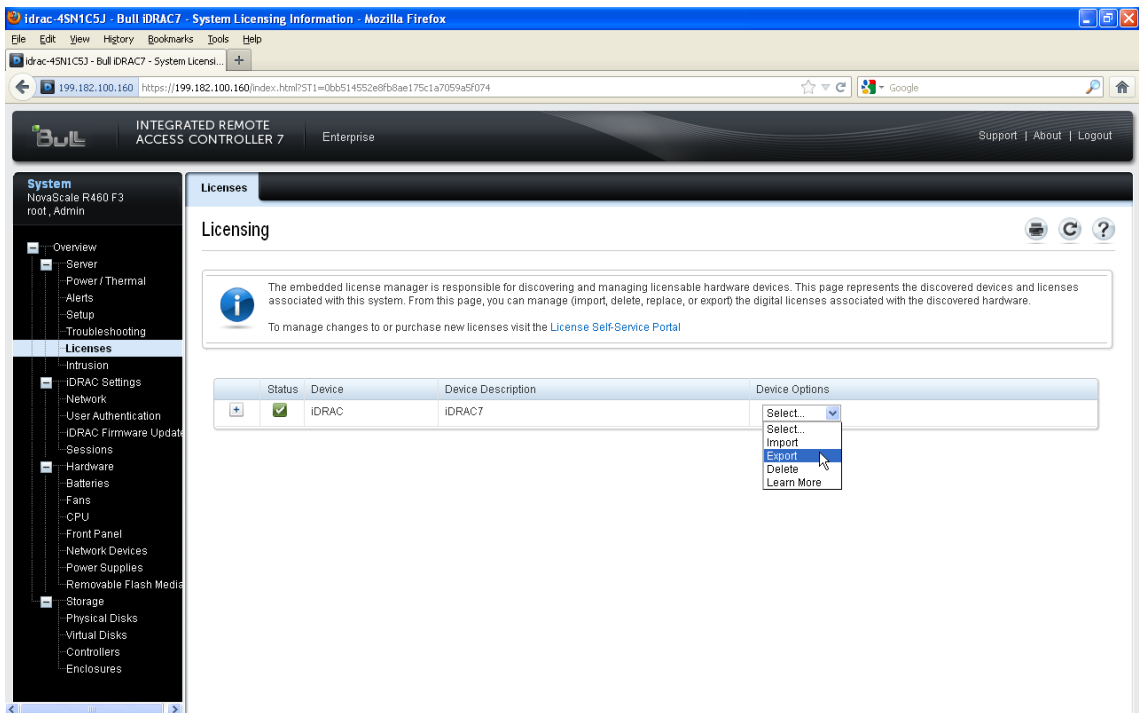
- b. Enter the “Username” and “password”, then click on “Submit” (defaults: root – calvin).



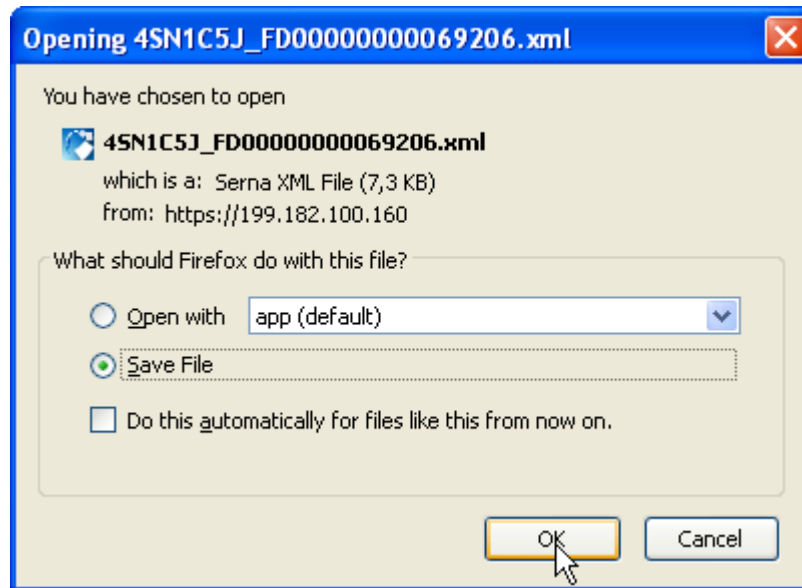
c. Then in the left menu, click on “Licenses”.



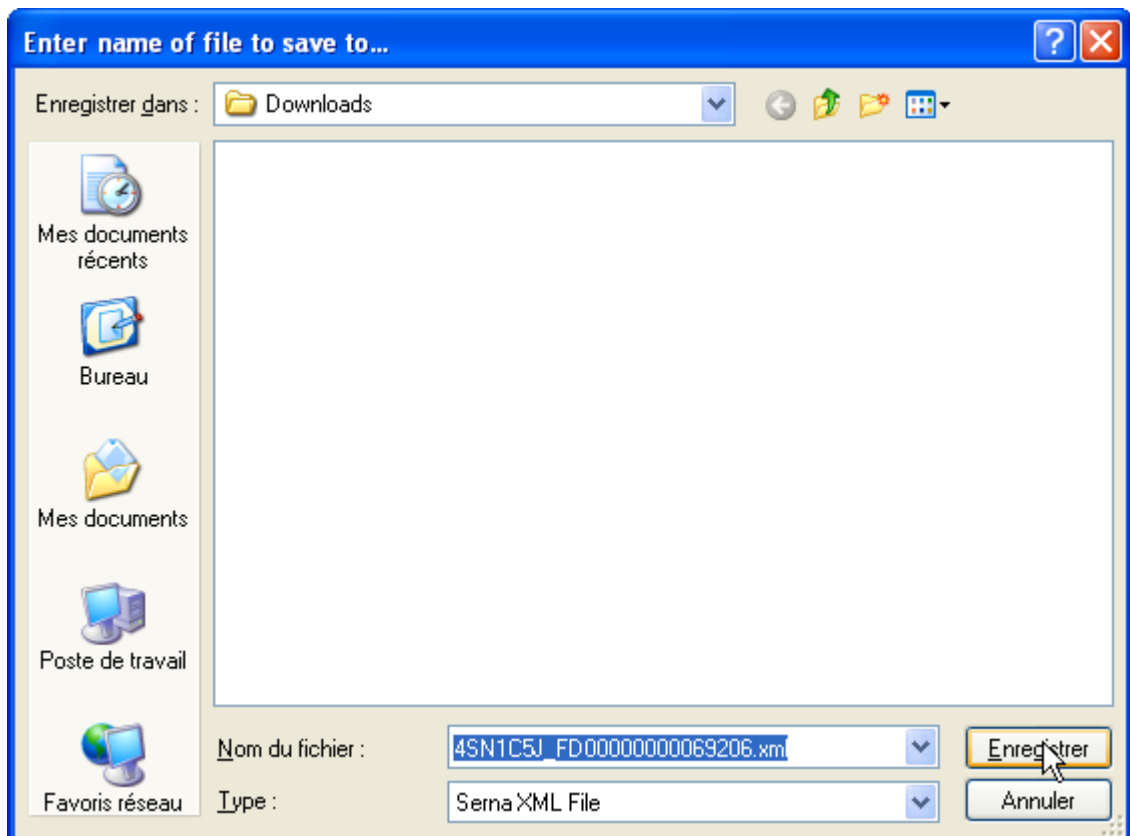
d. Then, in the “Device Options” combobox select the “Export” option as shown below.



- e. Save the [xml](#) file somewhere and conserve it for all the server life cycle.



- f. Then, click on save button (don't modify the name of the file).



- g. Verify that the xml file is correctly written.

2) iDRAC7 license import

Navigate to the Licenses tab (as described previously), and then select “[Import](#)” in the drop-down under “[Device Options](#)”.



Browse to the license file, and then click “[Apply](#)”.

You can locate the license file on the local file system of your management station, or on a share that is accessible.

End Procedure.