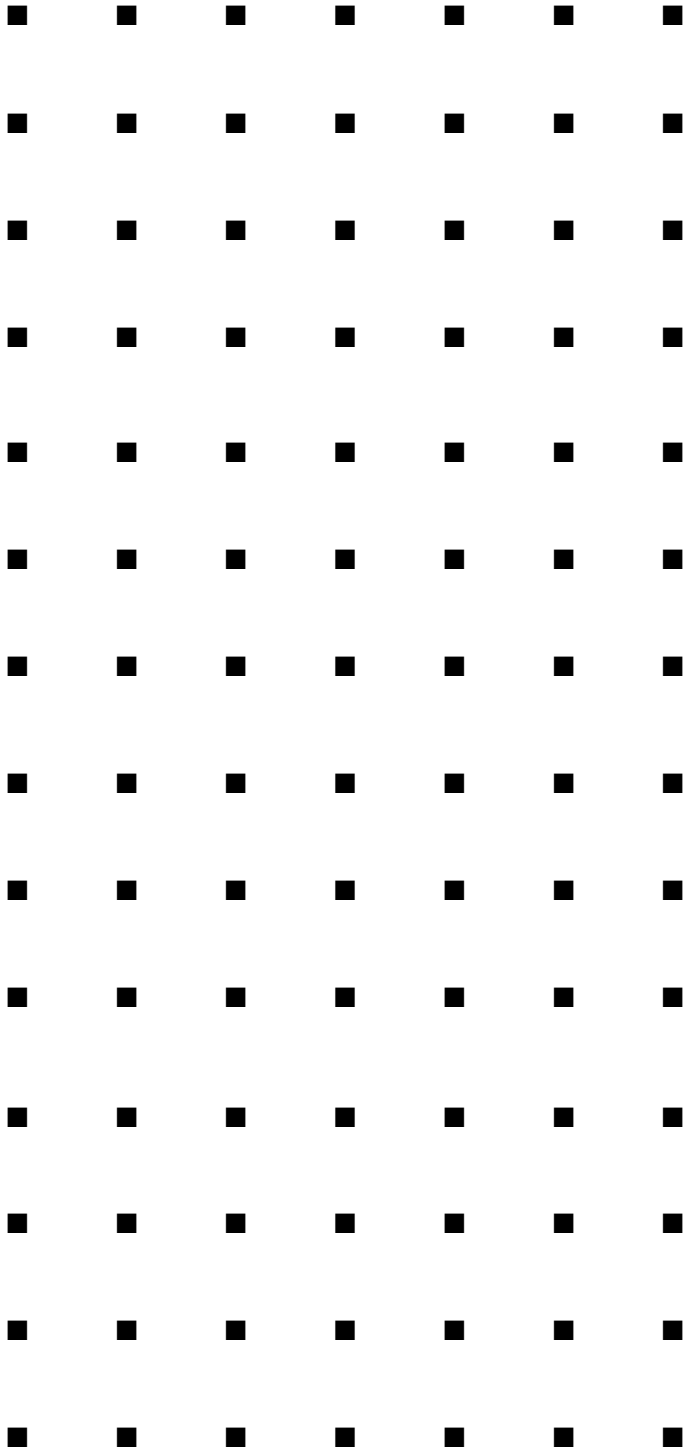


**Windows® Server 2003 R2 (Service Pack 2)**



**Installation Manual**

**NovaScale and Express5800 Series**

**Microsoft® Windows Server™ 2003 R2/  
Microsoft® Windows® Server 2003**

**RUR2 (Service Pack 2)  
Installation Manual**

Note: Microsoft and Windows are trademarks of Microsoft Corporation USA registered in the U.S.A and other countries.

## Preface

This manual describes the procedure to follow to correctly apply the Windows Server 2003 R2-compliant (Service Pack 2) Difference Module (RUR W2K3-002b-A).

**Tips** If you are using Windows Server 2003 R2 x64 Editions or Windows Server 2003 x64 Editions, refer to “Windows Server 2003 R2 x64 Editions/ Windows Server 2003 x64 Editions R2 (Service Pack2) Installation Guide”.

**Read this manual carefully** and follow these procedures after installing Windows Server 2003 R2 or Windows Server 2003 (hereinafter called “Windows Server 2003”) and performing a “System Update”.

To install Windows Server 2003 and the “System Update”, refer to the User’s Guide attached to each unit.

**Tips** The “User’s Guide” may be included in the “EXPRESSBUILDER” CD-ROM. Refer to “Online Document” from the master control menu in the “EXPRESSBUILDER” CD-ROM.

### •Items required for the installation

Before installing Windows Server 2003 R2 (Service Pack 2), check that you have the following media and manual handy.

- **Microsoft® Windows Server™ 2003 Service Pack 2**  
(hereinafter called “Windows Server 2003 Service Pack 2”)

For Windows Server 2003 Service Pack 2, prepare either of the following.

- **Download Windows Server 2003 Service Pack 2 from website**  
(hereinafter called “Downloaded version Service Pack 2”)
- **Prepare Windows Server 2003 Service Pack 2 CD-ROM**  
(hereinafter called “CD-ROM version Service Pack 2”)

**Windows Server 2003 R2-compliant (Service Pack 2) Difference Module (RUR W2K3-002b-A)**

(hereinafter called “Windows Server 2003 R2”)

- **Microsoft® Windows Server™ 2003 R2 / Microsoft® Windows® Server 2003 R2 (Service Pack 2) Installation Manual (this manual)**

## Notes

This section describes the notes you should take before starting to install Windows Server 2003 RUR2.

Be sure to read the notes before starting installation.

### ● Software products

Proper operation is not guaranteed for all software products on the Windows Server 2003 Service Pack 2 environment.

Before applying the Windows Server 2003 Service Pack 2, be sure to confirm with the providers of third-party products that they are supported.

Refer to the service pack-related pages of the manufacturer web site.

For the detailed and latest information, and information on the other products, contact the manufacturer or the dealer from which you purchased the unit.

### ● Applying Windows Server 2003 Service Pack 2

- When applying Windows Server 2003 Service Pack 2, be sure to use and apply **Windows Server 2003 RUR2** according to the instructions given in this manual.  
When applying Windows Server 2003 RUR2, be sure to **terminate the applications**.

#### Check

When you try to apply **Windows Server 2003 RUR2** to an unsupported unit, the update fails and the following message is displayed.



- If the Windows Server 2003 Service Pack 2 has been applied, apply only **Windows Server 2003 RUR2**. Refer to <Applying only Windows Server 2003 RUR2> in “1. Applying Windows Server 2003 RUR2”.
- Windows Server 2003 RUR2 **cannot be uninstalled**.
- We recommend **backing up the system information** before applying **Windows Server 2003 RUR2**.

#### Procedure for backing up system information

##### When the “off-line maintenance utility” is supported

We recommend you back up the system information using the off-line maintenance utility on completion of the system setup.

Without this backup, the information and settings specific to your unit cannot be restored after repair. Back up the system information according to the following procedure:

1. Prepare one 3.5-inch floppy disk.
2. Insert the “EXPRESSBUILDER” CD-ROM into the optical disc drive of the main unit and reboot the unit.  
The EXPRESSBUILDER starts and the “EXPRESSBUILDER Top Menu” appears.
3. Select [Tools] - [Off-line Maintenance Utility].
4. From the [System information Viewer], choose [Save System Information].

Follow the on-screen instructions.

### **When the “off-line maintenance utility” is not supported**

We recommend backing up the system information using EXPRESSBUILDER on completion of the system setup.

Without this backup, the information and settings specific to your unit cannot be restored after repair. Back up the system information according to the following procedure:

1. Prepare one 3.5-inch floppy disk.
2. Insert the “EXPRESSBUILDER” CD-ROM into the optical disc drive of the main unit and reboot the unit.  
The EXPRESSBUILDER starts and the “EXPRESSBUILDER Top Menu” appears.
3. Choose [Tools] - [System information Viewer].
4. From the [System information Viewer], choose [Save System Information].

Follow the on-screen instructions.

### ● **Driver Signing**

When applying **Windows Server 2003 RUR 2**, be sure to check first the status of Driver Signing Options according to the following procedure. (When performing the check, log in with a user having administrator authority (administrator etc.).)

1. Select [Start] - [Control Panel].
2. Select [System] from [Control Panel], and click the [Hardware] tab.
3. Click the [Driver Signing] button on the [Driver] field.

Confirm that the Driver Signing Options is set to either of the following.

**“Ignore –Install the software anyway and don’t ask for my approval (I)”**  
**“Warn – Prompt me each time to choose an action(W)”**

If the driver signing is set to “Block-Never install unsigned driver software (B)”, modify it to one of the above options, and then apply **Windows Server 2003 RUR2**.

(It is not necessary to reboot the system once the settings have been changed.)

If you need to change this setting, reset it to the original setting once Windows Server 2003 RUR2 is successfully applied.

### ● **Applying Windows Server® 2003 RUR2 (ServicePack2) to the system using Intel® LAN driver**

When applying the Windows Server 2003 RUR2 to the system using the Intel® LAN adapter, it may be necessary to update the driver depending on LAN driver version. Confirm the version according to “1. Confirm driver version”. **If it corresponds, please update the LAN driver before applying Service Pack 2.**

## 1. Confirm driver version

- a) Open the [Local Area Connection] property dialog.

Click [Control Panel] from the [Start] menu. The [Control Panel] is displayed.  
Click [Network Connections] - [Local Area Connection].

**Note** When using classic menu  
Select [Setting] → [Network Connections] from Start menu. Right click the [Local Area Connection] icon on the [Network Connections] window, select [Properties].

- b) Open the network adapter properties, confirm the driver version.

Click [Configure], and open the network adapter properties.  
Click the [Driver File Details] on the [Driver] tab, and confirm the version information.  
(Confirm the files with a “sys” extension name.)

If you're using any of the following driver versions, it is necessary to update the LAN driver. Please download the update module from the URL mentioned in “2. Download LAN driver” and apply it

(Table 1)

| Category                          | OS/Driver file name                 | Driver version             |
|-----------------------------------|-------------------------------------|----------------------------|
| 100 BASE driver                   | WindowsServer@2003/<br>e100b325.sys | <b>8.0.19.0 - 8.0.21.0</b> |
| 1000 BASE driver<br>(PCI)         | WindowsServer@2003/<br>e1000325.sys | <b>8.5.14.0 - 8.6.11.0</b> |
| 1000 BASE driver<br>(PCI-Express) | WindowsServer@2003/<br>e1e5132.sys  | <b>9.0.15.0 - 9.2.24.0</b> |

## 2. Update the LAN driver

- (a) Insert the Windows Server 2003 RUR2 CD-ROM. The autorun starts.  
(b) Click on Software Library, and click on the LAN drivers link. Follow the on-screen instructions to update the driver.

### ● About Express Setup

Applying Windows Server 2003 RUR2 using Express Setup **is not supported**. When applying **Windows Server 2003 RUR2**, first close the Express Setup.

### ● Settings related to the power supply for the application of Windows Server 2003 RUR2

While applying Windows Server 2003 RUR2, if the following settings are enabled, the process may be interrupted or it may not be applied correctly. Disable each setting (uncheck each checkbox) before applying Windows Server 2003 RUR2.

After applying Windows Server 2003 RUR2, reset each setting if needed.

- Setting of power supply (Turn off the monitor or hard disk)
- System hibernates

- 
- **System configuration change**

If you have changed the system configuration (by installing or removing internal options), apply again **Windows Server 2003 RUR2** referring to “**1 Applying Windows Server 2003 RUR2**” (P.8) in this manual. At this time, it is not necessary to apply the service pack again.
- **When using NEC ESM PRO Agent**
  - When this module is applied, the setting values of WDT and Shutdown monitoring are set to the default values for some models. This function is not supported on all models.
  - Before applying this module, check the settings of WDT and Shutdown monitoring. Once it is applied, reset the values if necessary.
  - Starting the following enables you to check and specify the settings of the WDT and Shutdown monitoring.

#### **NEC ESM PRO Agent in the control panel**

- For more information on the above operations and on WDT and Shutdown monitoring, refer to the manuals of NEC ESM PRO Agent.
- **Applying Windows Server 2003 Service Pack 2, Windows Server 2003 RUR2 using DeploymentManager**

Windows Server 2003 RUR2 can be applied using the following product.

DeploymentManager (hereinafter called DPM)

When using DPM, apply **Windows Server 2003 RUR2** according to the procedure mentioned later.

(Refer to “3. Apply Windows Server 2003 Service Pack 2, Windows Server 2003 RUR2 with DPM” ( P.15)

- **Applying Windows Server 2003 RUR2 to the system using SCSI HostRAID/SATA HostRAID/SCSI RAID 2010S (0ch)**

When Windows Server 2003 Service Pack 2 is applied to the system using the SCSI HostRAID/SATA HostRAID/SCSI RAID 2010S (0ch), the services of its management utility, “Adaptec Storage Manager -Browser Edition” (hereinafter abbreviated as ASMBE), may not start. This may happen when using an old version of ASMBE. In such a case, contact the manufacturer or the dealer from which you purchased it.

## ● When using SCSI HostRAID

### <Setting the SCSI HostRAID-bootable array system>

When the SCSI HostRAID is used, set the array that boots the system using the SCSI HostRAID BIOS.

**Important** When this setting is not done, problems, such as the memory dump that cannot be collected will occur.

1. If the following message is displayed when booting or rebooting the system, press the <Ctrl> key and <A> key at the same time.

**Press <CTRL>< A> for SCSISelect (TM) Utility!**

2. On the device menu is displayed, select the channel and press the <Enter> key.

**Tips**

- Be sure to specify the channel to which the array is bound.
- There may be only one channel (depending on the selected model).

3. Choose the “Configure/View HostRAID Settings” menu.

**Tips** If there is no “Configure/View HostRAID Settings” menu on the Options menu, the HostRAID function is not enabled. In this case, you do not need to perform the “setting of the bootable array system”.

4. On the Main menu, select the array and press the <Enter> key. Then, select Bootable.

**Tips** For a main unit without a [Bootable] menu, this setting is not required. Proceed to the next step.

5. Point the cursor to the array that boots the system, select Mark Bootable, and then press the <Enter> key.

**Tips** Pressing the <B> key on the keyboard sets or cancels “Mark Bootable”.

**Important** To boot the system from the bound array, be sure to perform this setting. Choosing Mark Bootable grants the boot priority to the array regardless of the priority of SCSI ID. A “B”, indicating bootable, is displayed beside the drive ID.

## ● When using SATA HostRAID

If Windows Server 2003 R2 is applied to the system using SATA HostRAID, the Found New Hardware Wizard may start.

If the search wizard starts, select “Install the software automatically [Recommended]”, and then click the [Next] button. The driver will be installed automatically.

If any warning message is displayed during the installation, click the “Continue Anyway” button to continue the installation.

Administrator authority is necessary for driver installation. Use a user who has administrator authority (administrator etc.) to perform the installation.



# 1 Applying Windows Server 2003 RUR2

This section describes how to apply **Windows Server 2003 RUR2**.

**Important** Before applying **Windows Server 2003 RUR2**, refer to the "Website of Microsoft Windows Server 2003 Service Pack 2" and check the disk capacity of your system.

(1) Turn on the peripheral units and the server in this order and then start Windows Server 2003.

(2) Prepare **Windows Server 2003 Service Pack2** using either of the following methods.

• **Using a downloaded version of the Service Pack 2**

Copy the downloaded version of the Service Pack2 to an arbitrary directory of your system.

**Important**

- It is not necessary to extract the downloaded file (\*\*.exe).
- Do not specify a directory name including blank characters.

• **Using a CD-ROM version of the Service Pack 2**

Prepare Microsoft's Windows Server 2003 Service Pack 2 CD-ROM.

(3) Prepare **Windows Server 2003 RUR2**.

a) Insert the Windows Server 2003 RUR2 CD-ROM. The autorun starts.

b) Open the Setup menu and click on the option that best suits your configuration.

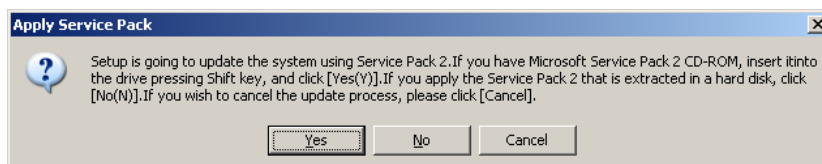
If the autorun does not start, execute **\RUR\update.vbs** from the optical disc drive.

(4) The following message is displayed. Click [OK].  
To interrupt the update, click [Cancel].



**[When Windows Server 2003 Service Pack 2 has been applied]**

The following message is displayed:



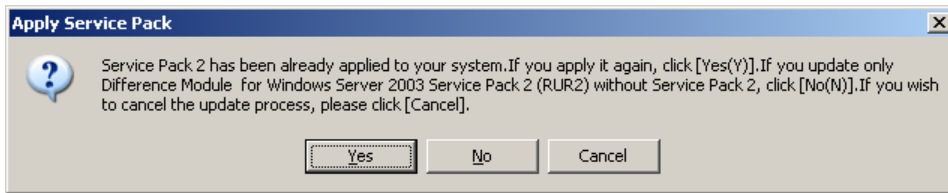
<To reapply Windows Server 2003 Service Pack 2>  
Click [Yes] and proceed to **(6)**.

<To apply only Windows Server 2003 RUR 2>  
Click [No] and proceed to **(10)**.

<To interrupt the processing>

Click [Cancel].

(5) The following message is displayed.



<To use the downloaded Service Pack2 >

Click [No] and proceed to (7).

<To use the Service Pack2 CD-ROM>

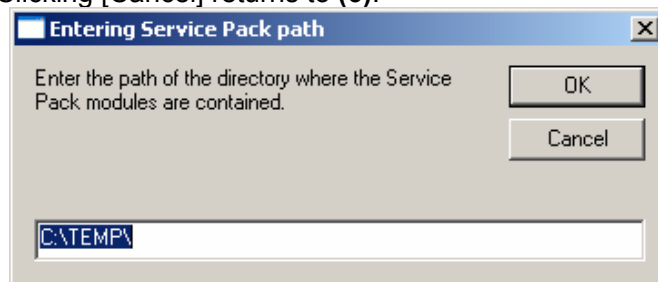
According to the on-screen instructions, while pressing <Shift> key, insert the Server 2003 Service Pack 2 CD-ROM into the optical disc drive. Click [Yes], and proceed to (8).

<To interrupt the processing>

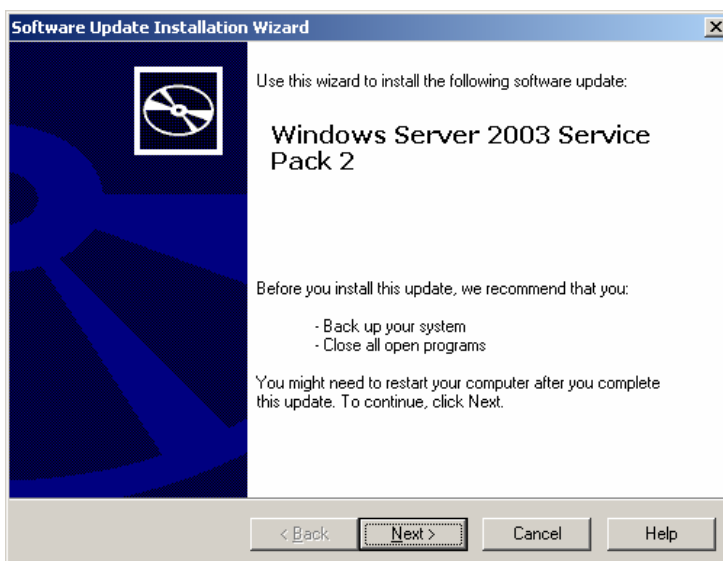
Click [Cancel].

(6) Specify the directory name where Windows Server 2003 Service Pack 2 was copied. Enter the directory path and click [OK].

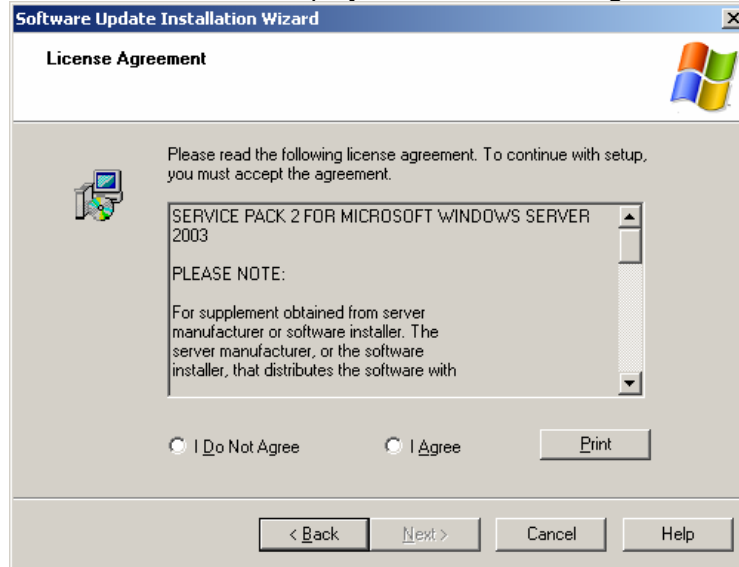
Clicking [Cancel] returns to (6).



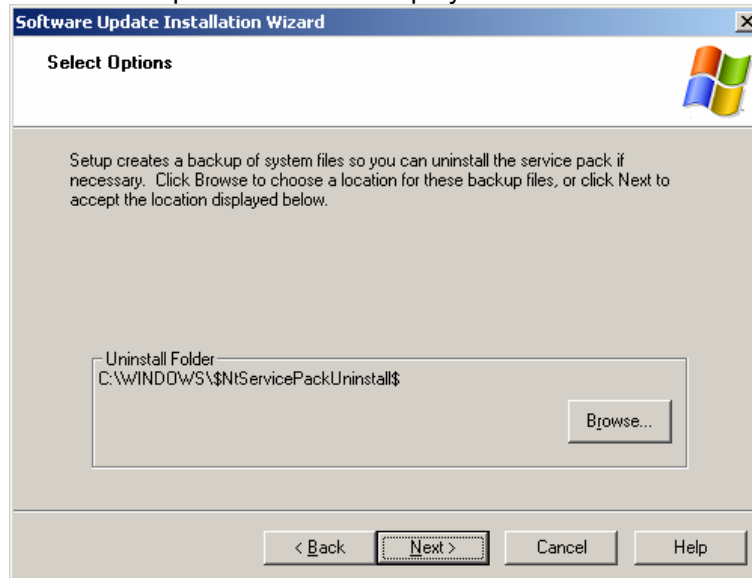
The installation of the Windows Server 2003 Service Pack 2 starts. Follow the on-screen instructions.



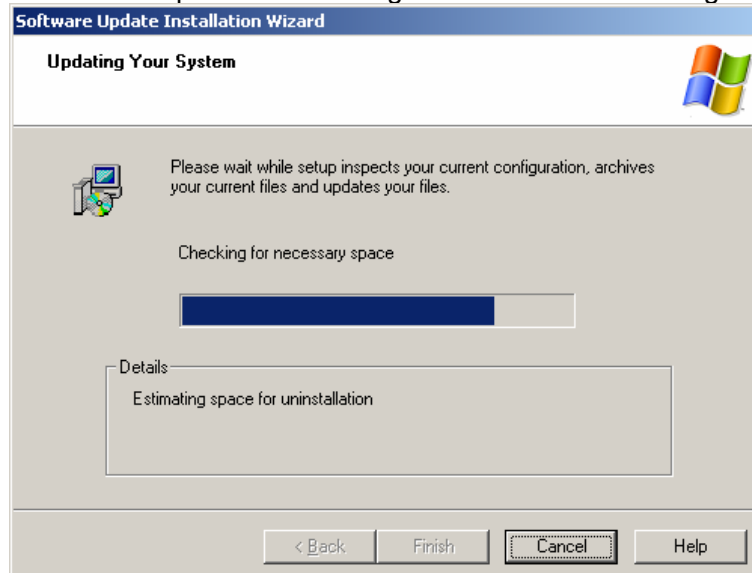
Confirm the contents displayed on the License Agreement screen.



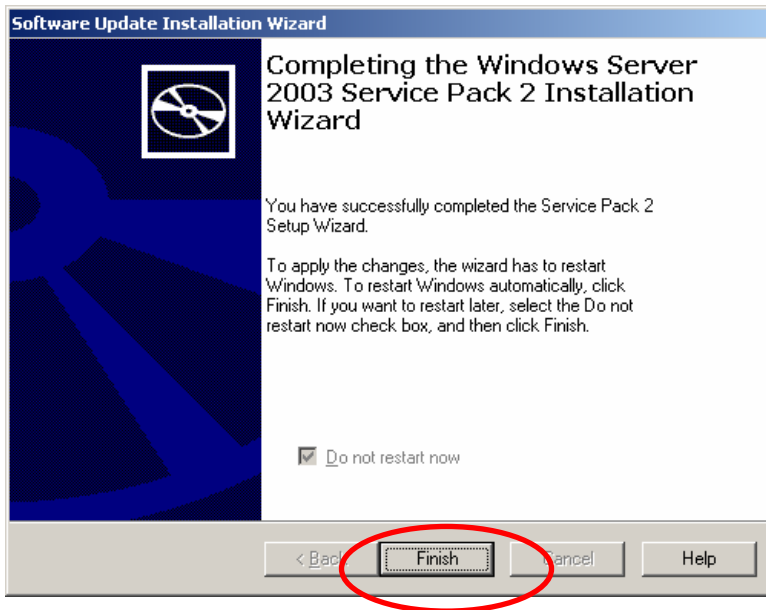
The Select Options screen is displayed.



Continue the process according to the on-screen messages.

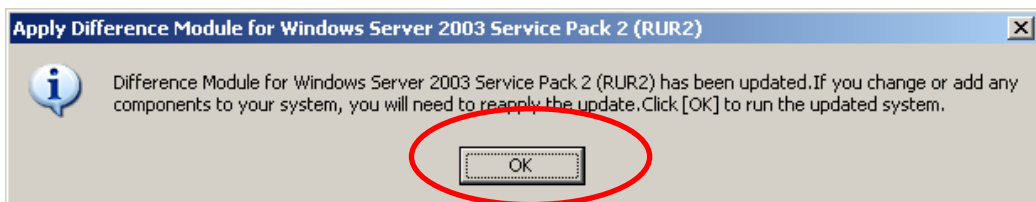


- (7) The following message is displayed. Click [Finish]. Note that clicking [Finish] does not reboot the system.



- (8) The setting of the Difference Module in **Windows Server 2003 RUR2** starts.

- (9) Once the following message is displayed, the Difference Module has been successfully applied. Click [OK] and then reboot system.



**Tips** When using the CD-ROM version Service Pack 2, remove it from CD-ROM drive.

The **Windows Server 2003 RUR2** has been successfully applied.

**Important** • When using the SCSI HostRAID, it is required to set the array that boots the system using the SCSI HostRAID BIOS. After applying Windows Server

2003 R2, refer to "Setting of SCSI HostRAID-bootable array system" and perform the setting. If this setting is not done, problems such as the memory dump that cannot be collected at fault occurrence will occur.

- If Windows Server 2003 R2 is applied to the system using SATA HostRAID, the search wizard may start after reboot. In this case, refer to "When using SATA HostRAID" to install the driver.

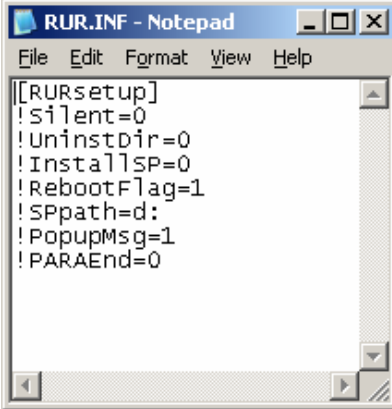
## 2 Applying Windows Server 2003 RUR2 in Silent Mode

This section describes how to apply Windows Server 2003 RUR2 in the silent mode.

- Important**
- Be sure to log into the system and apply Windows Server 2003 RUR2 in the silent mode.  
If the system is not logged in, the process may be interrupted.

- (1) Prepare **Windows Server 2003 RUR2**.  
Extract the module from **Optical Disc drive letter:\RUR** to **E:\RUR2\RUR**
- (2) Open “RUR.INF” in the “**RUR2**” folder with an appropriate text editor such as Notepad.

Example) E:\RUR2\RUR\RUR.INF



```

[[RURsetup]
!silent=0
!UninstDir=0
!InstallSP=0
!RebootFlag=1
!SPpath=d:
!PopupMsg=1
!PARAEnd=0

```

- (3) Edit the “RUR.INF” file and save it.

### Explanation of the parameters

| Name        | Detail  | Operation   | Specification  |
|-------------|---|---|----------------|
| !Silent     | Availability of silent operation  | Enable silent execution.  | 1              |
|             |   | Disable silent execution.   | 0              |
| !UninstDir  | Whether to create uninstall directory of Windows Server 2003 Service Pack 2 | Create.   | 1              |
|             |   | Do not create.  | 0              |
| !InstallSP  | Whether to apply Windows Server 2003 Service Pack 2                         | Apply.  | 1              |
|             |   | Do not apply.   | 0              |
| !RebootFlag | Whether to make a restart on completion of Windows Server 2003 RUR2         | Restart.  | 1              |
|             |   | Do not restart.   | 0              |
| !SPpath     | Storage location of Windows Server 2003 Service Pack 1                      | Apply Windows Server 2003 Service Pack 2 under the specified directory. | Directory name |
| !PopupMsg   | Whether to display message while running in silent mode                     | Display.  | 1              |
|             |   | Do not display.   | 0              |
| !PARAEnd    | Termination of parameters   | Termination of parameters   | Fixed to 0     |

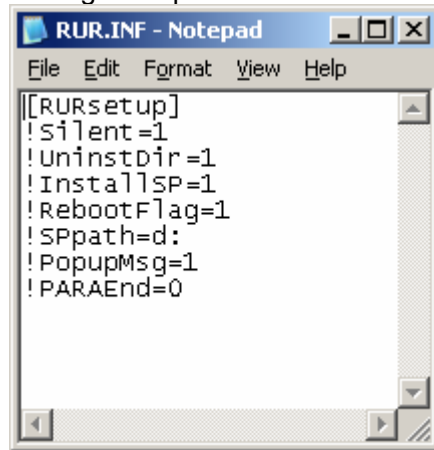
Example:

When applying Windows Server 2003 RUR2 with the settings below, specify as follows.

Setting contents:

- Execute in the silent mode.
- Apply Windows Server 2003 Service Pack 2.
- Create uninstall directory.
- Use Windows Server 2003 Service Pack 2 on the CD-ROM (drive D).
- Restart on completion of **Windows Server 2003 R2R2**.

Setting example:



```
[[RURsetup]
!silent=1
!UninstDir=1
!InstallSP=1
!RebootFlag=1
!SPpath=d:
!PopupMsg=1
!PARAEnd=0
```

- (4) Execute E:\RUR2\RUR\UPDATE.VBS.

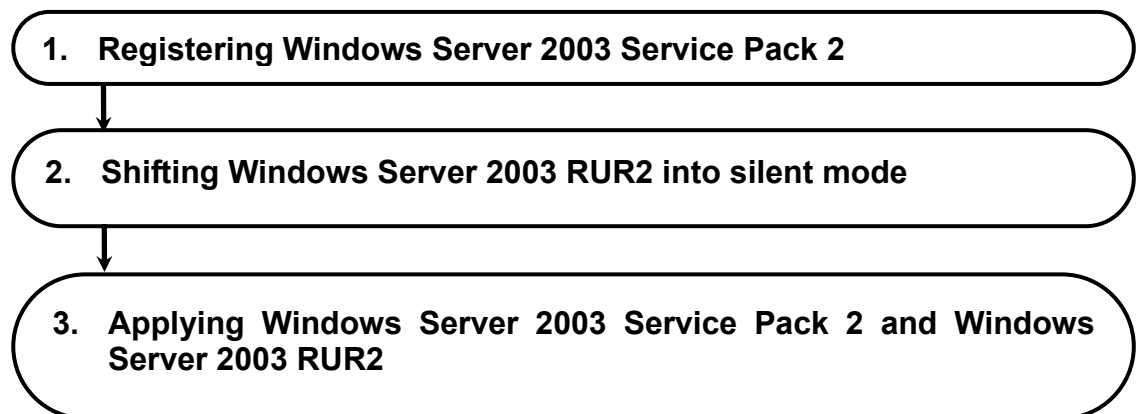
Hereafter, Windows Server 2003 Service Pack 2 and "**Windows Server 2003 R2R2**" are applied automatically. Modify the setting contents as needed.

- Important**
- When using the SCSI HostRAID, it is required to set the array that boots the system using the SCSI HostRAID BIOS. After applying Windows Server 2003 R2R2, refer to "Setting of SCSI HostRAID-bootable array system" and perform the setting. If this setting is not done, problems such as the memory dump that cannot be collected at fault occurrence will occur.
  - If Windows Server 2003 R2R2 is applied to the system using SATA HostRAID, the search wizard may start after reboot. In this case, refer to "When using SATA HostRAID" to install the driver.

### 3 Applying Windows Server 2003 Service Pack 2 and Windows Server 2003 RUR2 using DPM

This section describes how to apply Windows Server 2003 Service Pack 2 and Windows Server 2003 RUR2 using DPM.

- Important**
- You cannot apply both OS clear installation and Windows Server 2003 RUR2 at the same time.
  - To separately apply Windows Server 2003 RUR2 by remote update, use **DPM3.0 or later**.



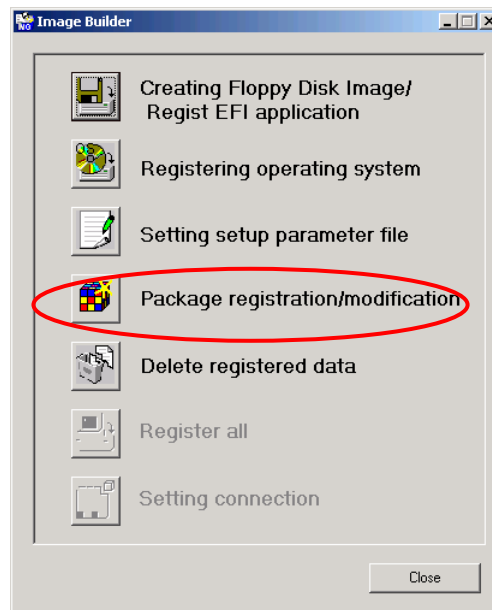


## 1. Registering Windows Server 2003 Service Pack 2

This section describes the procedure for registering Windows Server 2003 Service Pack 2.

**Tips** This section describes the procedure using DPM4.1 as an example. Some screens may be slightly different depending on the version you are using.

- (1) From the "Start" menu, select " All Programs " → "DeploymentManager" → "Image Builder". Click "Package registration/modification" from Image Builder.



- (2) Select "Create Windows package" from the "File" menu in the "Package registration/modification" screen.

- (3) Set each item in the “Basic”, “Execution Settings” and “Applicable OS and language” tab. It is not necessary to set the other items except for the one that follow.

- ”Basic” tab

- Package ID

This is the package ID number. Input alphanumeric character, “-” or “\_” within 63 bytes.  
You must input this field.

- Company name

It is the name of the publisher that issues the package. Input within 127 bytes.

- Release date

Input the release date of the package. Input by the format of AD/Month/Day.

**Tips**

- If the input is an invalid Release date, it will be ignored or corrected automatically.
- Input four digits for the year of the Release date, two digits for the month and day.

- Package summary

Input summary information of the package. Input within 511 bytes.

- Type

Specify “**Service pack**”.

- Urgency

Specify “**Normal**”.

- MS number

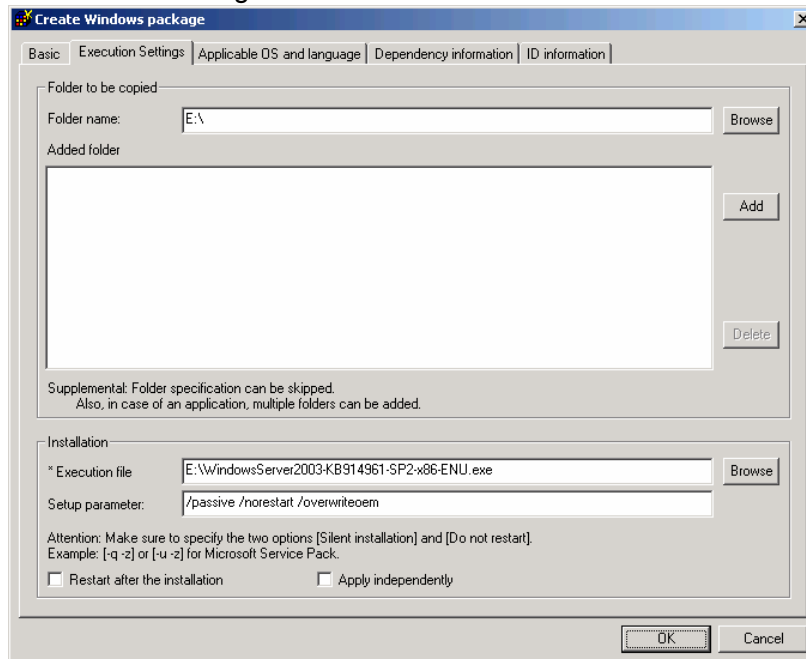
Specify “**KB914961**”.

- Major version

Specify “**2**”. You must input this field.

- Minor version  
Specify “0”. You must input this field.

- ”Execution Settings” tab



- Folder name  
Specify the copied folder.

**Note**

- UNC (Universal Naming Convention) format (\\”machine name” \”share folder” \”sub directory”) is disabled in the “Folder name”. Assign the drive letter using “Assign network drive”.
- The patch is registered at the folder unit. Within one folder, only one batch application can be contained.

- Added folder  
Click the “Add” button, and add the folder specified in the “Folder name”.

- Execution file  
Specify “**copy source folder: \\ WindowsServer2003-KB914961-SP2-X86-ENU.EXE**”.  
You can click the “Browse” button to specify the file.  
You must input this field.

**Important**

Don’t register a file where %xx(xx is hexadecimal number 0 - f) Example:file%9d.exe) is contained to Execution file. If there’s %xx in the package, it can’t be downloaded correctly to the management server.

- Setup parameter  
Specify “**/passive /norestart /overwriteoem**”.

The meaning of each setup parameter is as follows.

**[/passive]:**

Update with nobody. If any error occurred while executing the scenario, the execution will stop at that place. While the OS is being installed, the period until timeout is considered scenario executing on the Web console. While the remote update is being performed, on the Web console, it will always be the status of scenario executing.

**[/norestart]:**

Specify "/norestart" so that it does not restart after execution.

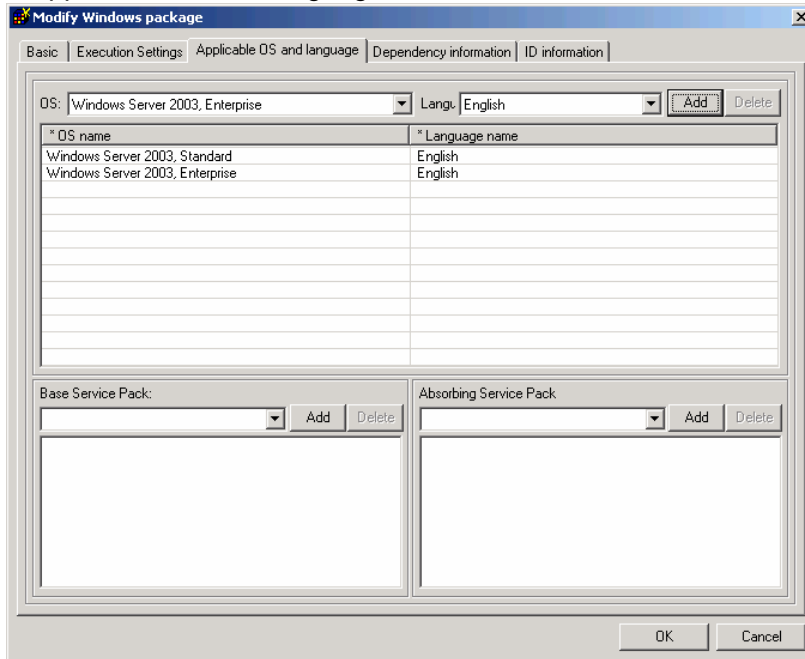
**[/overwriteoem]:**

Specify it when an OEM-specific driver is installed.

The process is executed without displaying the command prompt.

**Tips** You can check these options by executing the Service Pack /HotFix with the "/Help" or "-?" option specified, or by looking up the homepage of distribution source.

- "Applicable OS and language" tab



- "OS" and "Lang"

Select the OS and Language which applies to the package as follow:

| OS                                     | Language       |
|--|----------------|
| <b>Windows Server 2003, Standard</b>   | <b>English</b> |
| <b>Windows Server 2003, Enterprise</b> | <b>English</b> |

- "Add" button of OS and Lang  
Add the selected "OS" and "Lang".

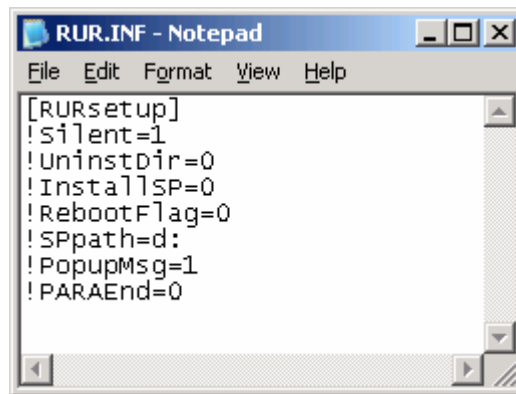
- (4) Click the "OK" button to create the package.  
This operation completes the registering of the Windows Server 2003 Service Pack 2.

## 2. Shifting Windows Server 2003 RUR2 into silent mode

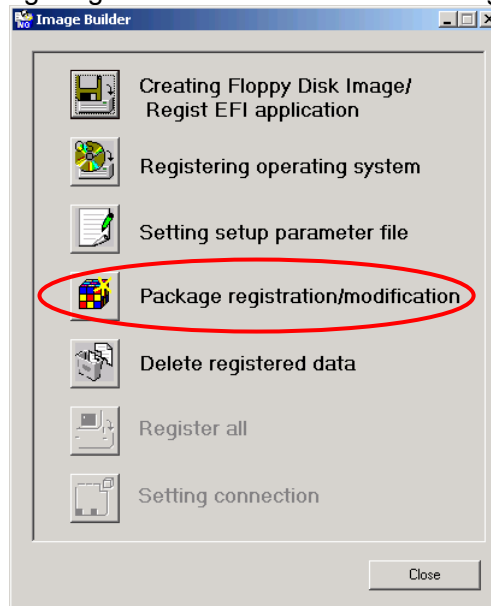
This section describes the procedure for shifting into the silent mode that enables delivery by DPM.

**Tips** This section describes the procedure using DPM4.1 as an example. Some screens may be slightly different depending on the version you are using.

- (1) Copy the files in "**Windows Server 2003 RUR2**" into an arbitrary local folder that you created.  
In this example, copy the files into the "**RUR2**" folder which is directly under the E drive.
- (2) Edit "RUR.INF" in the "RUR2" folder with an appropriate text editor such as Notepad [RUR2] and save it.  
For the detail of each parameter, refer to " Explanation of parameters" in [2. Applying Windows Server 2003 RUR2 in silent mode].



- (3) From the "Start" menu, select " All Programs " → "DeploymentManager" → "Image Builder". Click "Package registration/modification" from Image Builder.



- (4) Select "Create Windows package" from the "File" menu in the "Package registration/modification" screen.

- (5) Set each item in the “Basic”, “Execution Settings” and “Applicable OS and language” tab. It is not necessary to set other items than the ones that follow.

- [Basic] tab

- Package ID

This is the package ID number. Input alphanumeric character, “-” or “\_” within 63 bytes.

You must input this field.

- Company name

It is the name of the publisher that issues the package. Input within 127 bytes.

- Release date

Input the release date of the package. Input by the format of AD/Month/Day.

**Tips**

- If the input is an invalid Release date, it will be ignored or corrected automatically.
- Input four digits for the year of the Release date, two digits for the month and day.

- Package summary

Input summary information of the package. Input within 511 bytes.

- Type

Specify “**Service pack**”.

- Urgency

Specify “**Normal**”.

- MS number

Specify “**KB914961**”.

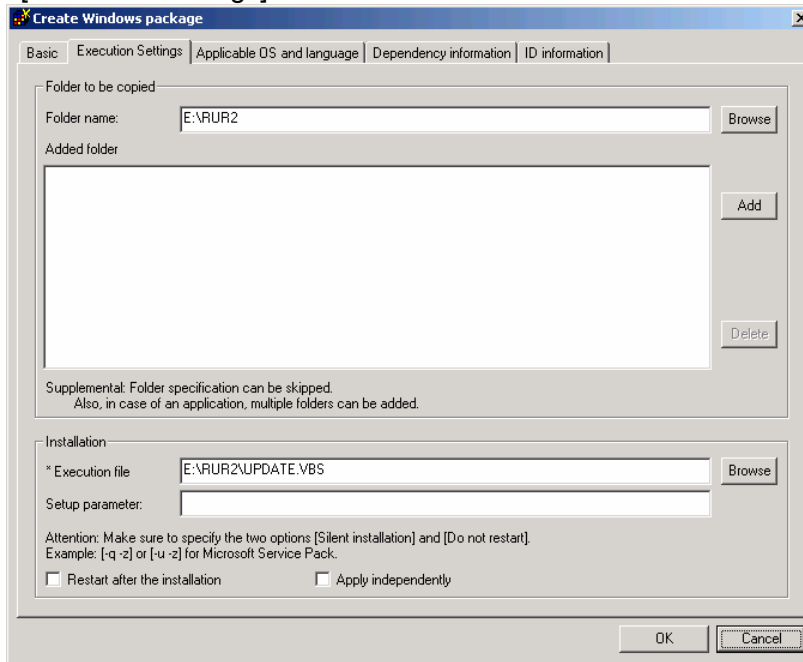
- Major version

Specify “**2**”. You must input this field.

- Minor version

Specify “**0**”. You must input this field.

• [Execution Settings] tab



• Folder name

Specify the copied folder. By clicking “Browse” button, you can specify folder.

**Note**

- UNC(Universal Naming Convention) format(\\“machine name”\“share folder”\“sub directory”)is disabled in the “Folder name”. Assign the drive letter using “Assign network drive”.
- The patch is registered at the folder unit. Within one folder, only one batch application can be contained.

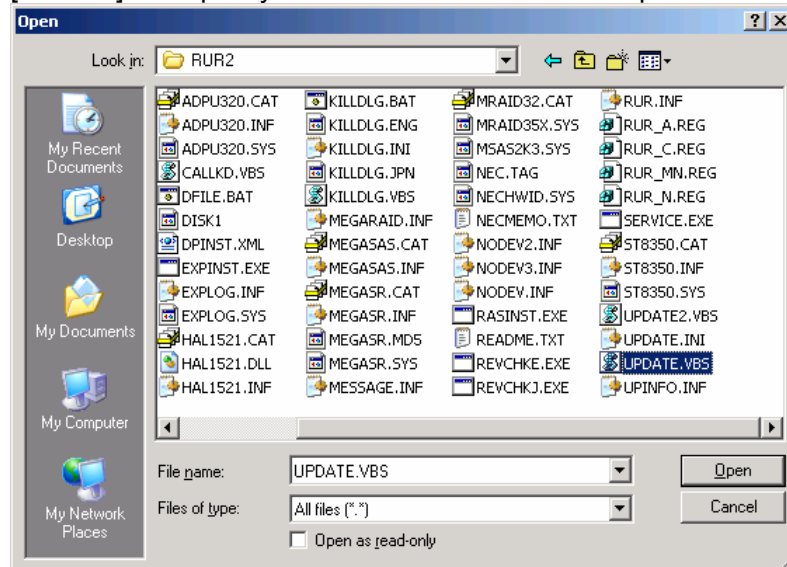
• Added folder

Click the “Add” button to add the folder specified in the “Folder name”.

• Execution file

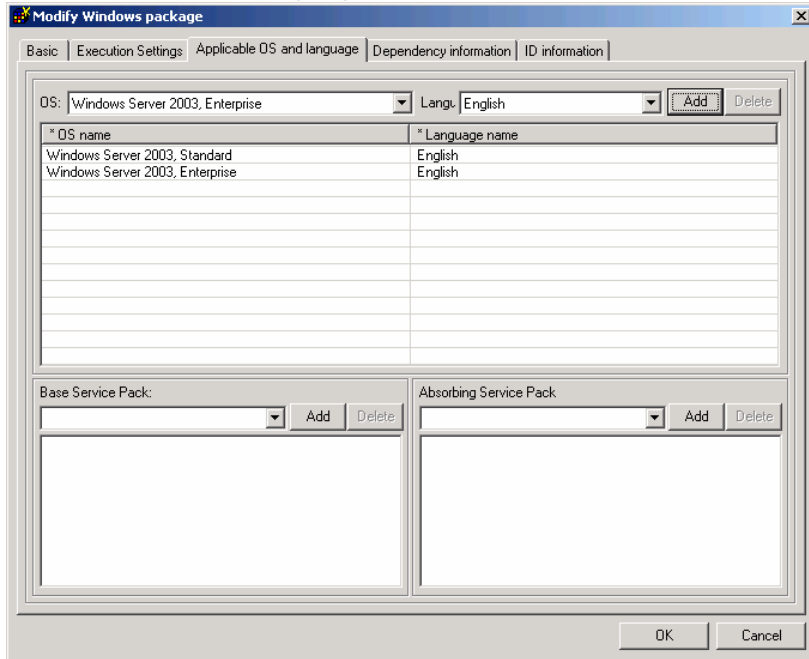
Specify“**E:\RUR2\UPDATE.VBS**”.

When you click the “Browse” button to specify a file, change the [Files of type] to [All Files] and specify “**UPDATE.VBS**”. You must input this field.



**Important** Don't register a file where %xx(xx is hexadecimal number 0 - f) Example:file%9d.exe) is contained to Execution file. If there's %xx in the package, it can't be downloaded correctly to the management server.

- [Applicable OS and language] tab



- "OS" and "Lang"  
Select the OS and Language which applies to the package as follow:


| OS                              | Language |
|---------------------------------|----------|
| Windows Server 2003, Standard   | English  |
| Windows Server 2003, Enterprise | English  |

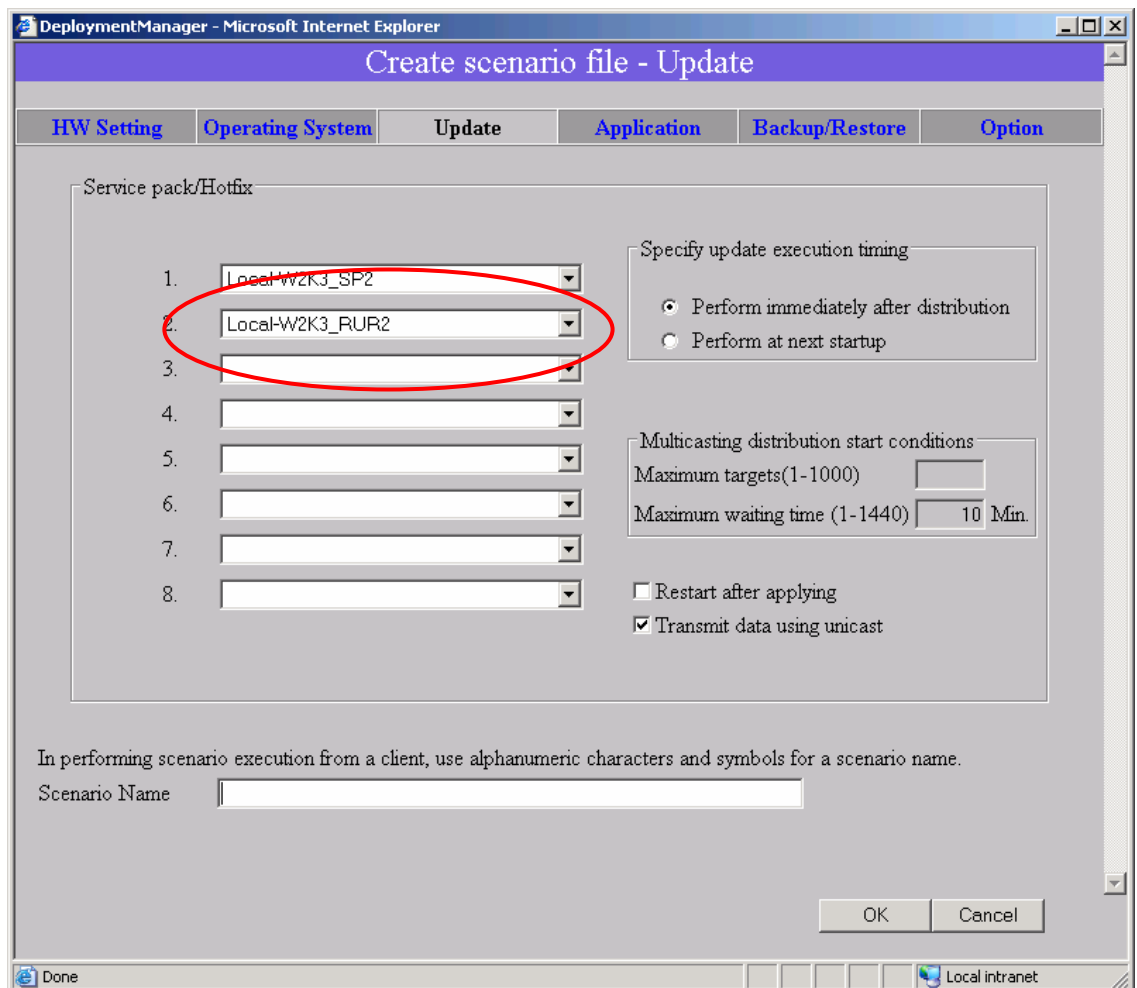
- "Add" button of OS and Lang  
Add the selected "OS" and "Lang".

With this operation, Windows Server 2003 RUR2 has successfully shifted into the silent mode.



### 3. Applying Windows Server 2003 Service Pack 2 and Windows Server 2003 RUR2

- (1) Start DPM.
- (2) On the “Scenario” menu of the Main Window screen, choose “Create Scenario” to display the Scenario File Create screen.  
You can display the same screen by clicking the  icon on the Main Window screen.
- (3) Click the “Update” tab and select Windows Server 2003 Service Pack 2 and Windows Server 2003 RUR2 from the pull down menu to create a scenario.



**Note**

- Create a scenario in which the image files are applied at the same time.
- Specify the files so that the service pack is applied before Windows Server 2003 RUR2 is executed. (Among files 1 to 8, the execution starts from file 1 and goes on.)

**Tips** After rebooting the computer, “Windows Server 2003 Service Pack 2”, and “Windows Server 2003 RUR2” becomes effective. If you want to reboot the computer immediately after the execution of the scenario, check the “Restart after applying” box.

- (4) Assign the scenario created in (3) to the target unit and execute the scenario.

With this operation, Windows Server 2003 Service Pack 2 and Windows Server 2003 RUR2 have been successfully applied.

- Important**
- When using the SCSI HostRAID, it is required to set the array that boots the system using the SCSI HostRAID BIOS. After applying Windows Server 2003 RUR2, refer to "Setting of SCSI HostRAID-bootable array system" and perform the setting. If this setting is not done, problems such as the memory dump that cannot be collected at fault occurrence will occur.
  - If Windows Server 2003 RUR2 is applied to the system using SATA HostRAID, the search wizard may start after reboot. In this case, refer to "When using SATA HostRAID" to install the driver.

## Troubleshooting

When the server does not operate the way it should, check the server according to the following checklist before asking for repair.

If one of the symptoms in the list is detected, follow the subsequent checking and processing. If still it does not operate normally, record the message displayed on the screen and contact the maintenance service office.



Applied Windows Server 2003 Service Pack 2 without applying Windows Server 2003 RUR2.

→ Apply only the Difference Module.

For the detail procedure, refer to “To apply Windows Server 2003 RUR2” in the “1. Applying Windows Server 2003 RUR2” of this manual.



The “Windows Server 2003 Service Pack 2” which is downloaded from the web site is unusable.

→ Does the downloaded file(\*\*.exe) be extracted ?

It is unnecessary to extract the downloaded file(\*\*.exe).  
Use it directly.

## About the applied module with Windows Server 2003 RUR2

The module applied with Windows Server 2003 RUR2 is as follows.

1. Mraid35x.sys (6.32.2.32) : MEGARAID SCSI 320-1/81F,SCSI ROMB Driver  
EXPRESSBUILDER Version4.133x-N previous model  
(Except EXPRESSBUILDER Version4.132x-N)
2. Adu160m.sys (NT51\_6S3 (Internal name:RTC\_u160\_NT51\_6S3 V218A24B13\_RTC05S1)) : ASC-29160/ASC-29160LP,On-Board SCSI(AIC-7899)
3. Adu320.sys (PH3.0S2(Internal name:PH 3.0 MS\_V98S2 V564 bw01)) : ASC-29320ALP,On-Board SCSI
4. Aarich.sys (6.075.1.7dND) :The latest driver which supports SATA  
HostRAID(Olympia)  
Target Model:The following EXPRESSBUILDER target device.  
- EXPRESSBUILDER Version3.111x-N  
- EXPRESSBUILDER Version3.115x-N  
- EXPRESSBUILDER Version3.116x-N
- Aarich.sys (6.075.1.7dD) :The latest driver which supports SATA  
HostRAID(Pelicanhil)  
Target Model:Other models which is not supported by  
Aarich.sys (6.075.1.7dND)
5. St8350.sys (2.9.70.8) :The latest driver which supports N8103-101
6. Msas2k3.sys (1.20.0.32) :The latest driver which supports LSILogic MegaRAID  
SAS 8480E/LSILogic MegaRAID SAS 8408E/MegaRAIDSAS 8300XLP/SASROMB
7. Megasr.sys (4.20.526.2006) :Driver supports SAS SWRAID  
Target Model:EXPRESSBUILDER Version4.146x-N
8. A320raid.sys (1.02.069AB3) : Driver supports SCSI HostRAID

9. explog.sys (Rev 7.0.21.58) : Exceptional Target Model  
100 series  
Express5800/ 110Ej, 120Eg  
NovaScale T820 / R440 / R460 / T860 / T880 / R480
  
10. necras.sys (Ver5.10.8.0) : Target Model  
100 series  
Express5800/ 120Rd-1, 120Rf-2,  
140Hd, 140Rc-4,  
120Mf, 120Lg, 120Rb-1, 120Rd-2
  
11. REVCHK.EXE (Ver 1.08) : Windows Service 2003 RUR2 (Service Pack2)  
All supported target models.

