

Document Title:	How to integrate RAID events into ESMPPro Agent Report Setting on Linux ?
Document ID:	TID0802051439
Creation Date:	5/2/2008
Modified Date:	
Document Revision:	0
Product Class:	Servers
Product and Version:	Bull Servers NovaScale R400 and T800 series

Symptoms / Facts

ESMPPro Agent relies on Linux SYSLOG in order to track RAID events. This SYSLOG monitoring requires ESMPPro Agent settings. This document explain how to implement such settings.

Requirements

- Bull server with NEC ESMPPro Agent already installed and properly set for alert.
- RAID management software already installed (like MSM, WebPAM, ...).
- .TBL and .INF files provided with RAID management software (see source of software)

Solutions / Fixes

All coming instructions have to be applied on server running Linux.
Example below with MegaRAID Storage Manager (MSM)

1. Create two folders

```
[root@Franck /]# mkdir -p /opt/nec/report/inf
[root@Franck /]# mkdir -p /opt/nec/report/table
[root@Franck /]# ls /opt/nec/report/
inf table
[root@Franck /]# _
```

2. Copy the files

```
[root@Franck tmp]# cp msmeng.tbl /opt/nec/report/table
[root@Franck tmp]# cp msmeng.inf /opt/nec/report/inf/
[root@Franck tmp]# ls -R /opt/nec/report/
/opt/nec/report/:
inf table

/opt/nec/report/inf:
msmeng.inf

/opt/nec/report/table:
msmeng.tbl
[root@Franck tmp]# _
```

- Restart ESMPro

```
[root@Franck bin]# cd /opt/nec/esmpro_sa/bin/  
[root@Franck bin]# ./ESMRestart _
```

- Type the following command

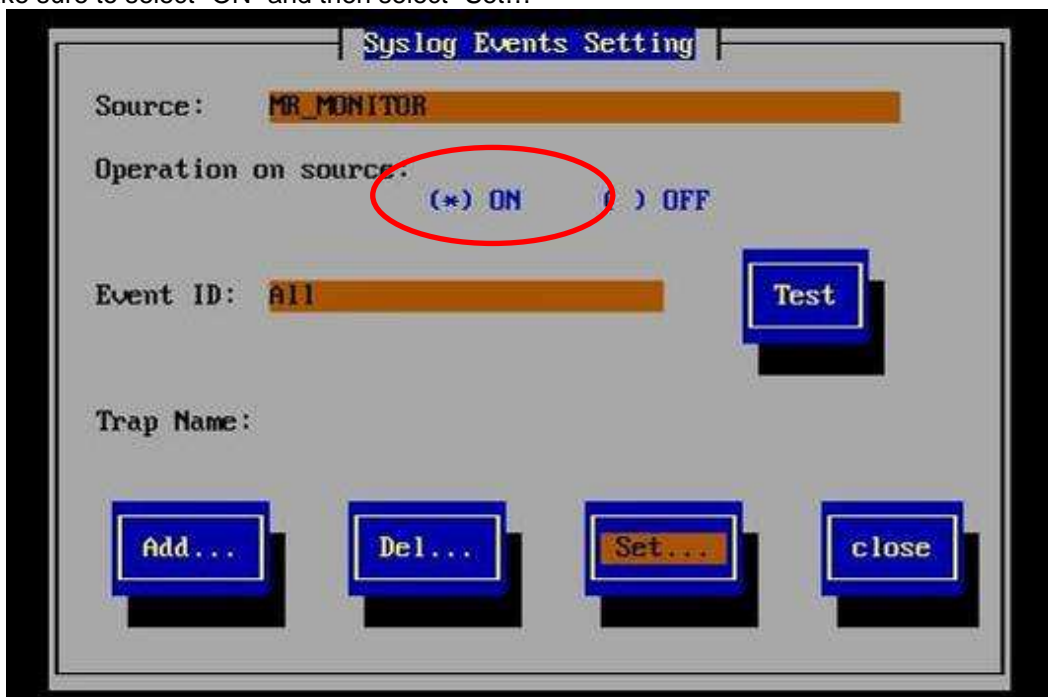
```
export LANG=en_US
```

- Attach this source to the report alert (example here with "SNMP Trap")

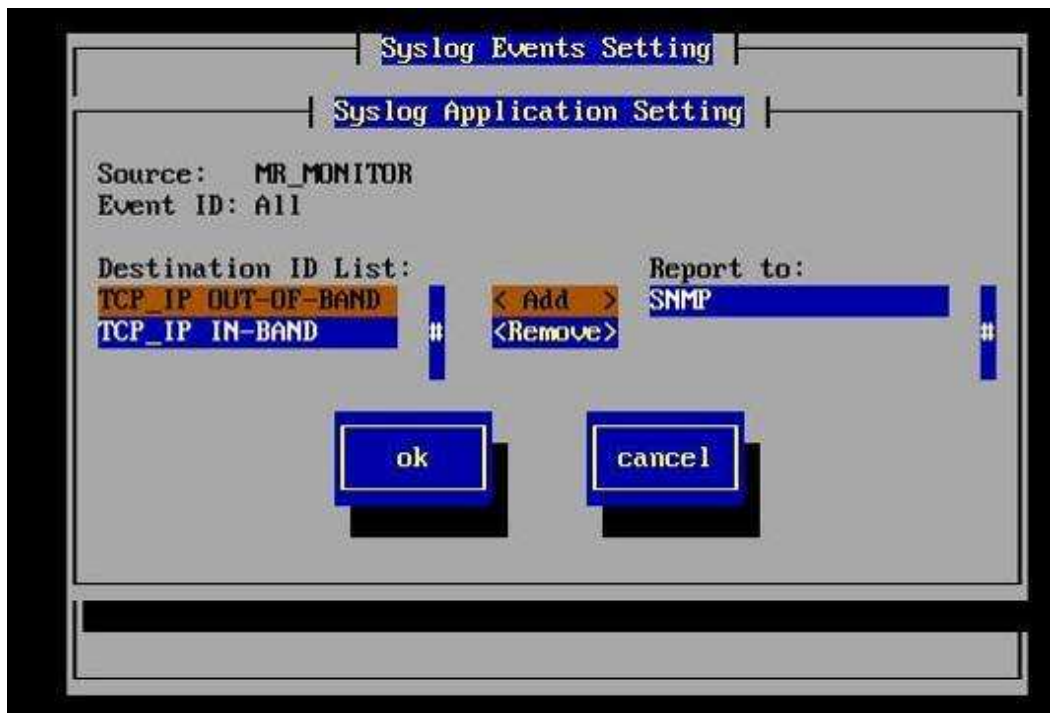
```
[root@Franck bin]# ./ESMamsadm_
```



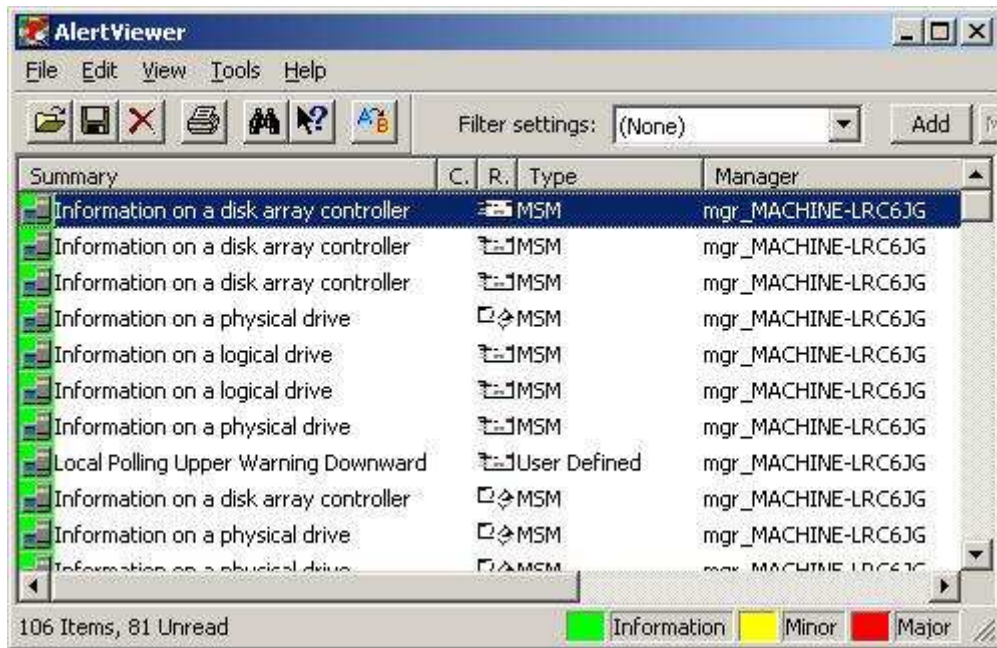
Note: make sure to select "ON" and then select "Set..."



Note: In this example SNMP trap is used, but same settings can be done with TCP-IP.



6. Once, all window are closed, a test can be done to check



Document owner:	COE Servers
Applies to:	Servers